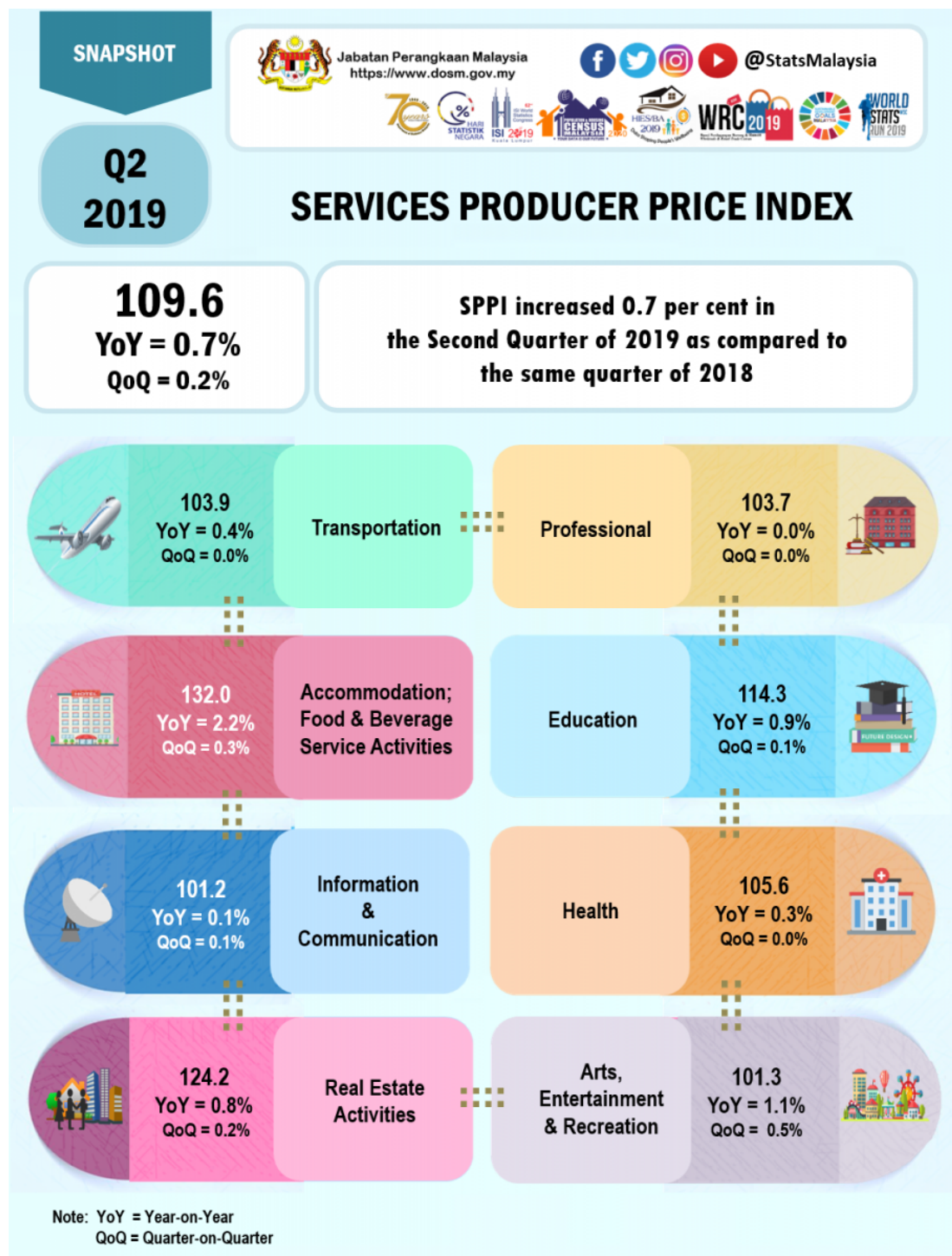




MINISTRY OF ECONOMY
DEPARTMENT OF STATISTICS MALAYSIA

SERVICES PRODUCER PRICE INDEX SECOND QUARTER OF 2019



SERVICES PRODUCER PRICE INDEX (2010=100)

SECOND QUARTER 2019

The Services Producer Price Index (SPPI) for the second quarter of 2019 increased 0.7 per cent as compared to the same quarter of the preceding year. The main sub-sectors that contributed to the increase were Accommodation; Food & Beverage Service Activities (+2.2%), Arts, Entertainment & Recreation (+1.1%), Education (+0.9%), Real Estate Activities (+0.8%), Transportation (+0.4%), Health (+0.3%) and Information & Communication (+0.1%) indices. Meanwhile, the index of Professional sub-sector was unchanged.

For quarterly comparisons, the index for the second quarter 2019 increased 0.2 percent. The increase was contributed by Arts, Entertainment & Recreation (+0.5%), Accommodation; Food & Beverage Service Activities (+0.3%), followed by Real Estate Activities (+0.2%), Education (+0.1%) and Information & Communication (+0.1%) indices. Meanwhile, Transportation, Health and Professional indices was unchanged.

Table 1 : Services Producer Price Index (2010=100) Second Quarter 2019

<i>Sub-sector SPPI (2010=100)</i>	<i>Index</i>			<i>% Change</i>	
	<i>Q2 2018</i>	<i>Q1 2019</i>	<i>Q2 2019</i>	<i>Q2 2019 / Q1 2019</i>	<i>Q2 2019 / Q2 2018</i>
TOTAL	108.8	109.4	109.6	0.2	0.7
<i>Transportation</i>	<i>103.5</i>	<i>103.9</i>	<i>103.9</i>	<i>0.0</i>	<i>0.4</i>
<i>Accommodation; Food & Beverage Service Activities</i>	<i>129.1</i>	<i>131.6</i>	<i>132.0</i>	<i>0.3</i>	<i>2.2</i>
<i>Information & Communication</i>	<i>101.1</i>	<i>101.1</i>	<i>101.2</i>	<i>0.1</i>	<i>0.1</i>
<i>Real Estate Activities</i>	<i>123.2</i>	<i>124.0</i>	<i>124.2</i>	<i>0.2</i>	<i>0.8</i>
<i>Professional</i>	<i>103.7</i>	<i>103.7</i>	<i>103.7</i>	<i>0.0</i>	<i>0.0</i>
<i>Education</i>	<i>113.3</i>	<i>114.2</i>	<i>114.3</i>	<i>0.1</i>	<i>0.9</i>
<i>Health</i>	<i>105.3</i>	<i>105.6</i>	<i>105.6</i>	<i>0.0</i>	<i>0.3</i>
<i>Arts, Entertainment & Recreation</i>	<i>100.2</i>	<i>100.8</i>	<i>101.3</i>	<i>0.5</i>	<i>1.1</i>

TRANSPORTATION

The SPPI for Transportation sub-sector increased 0.4 per cent for the second quarter of 2019 as compared to the same quarter of the previous year. This increase was contributed by Passenger Air Transport (+1.1%), Postal Activities (+1.0%), Courier Activities (+0.2%) & Other Land Transport (+0.2%) indices. Meanwhile, no changes were recorded for Sea & Coastal Water Transport and Freight Air Transport indices.

On a quarterly basis, the index was unchanged for the second quarter of 2019 as compared to the previous quarter. However, the index of Passenger Air Transport increased 0.4 per cent, while Postal Activities (-0.4%) and Sea & Coastal Water Transport (-0.3%) indices decreased. No changes were recorded for Freight Air Transport, Courier Activities and Other Land Transport indices.

ACCOMMODATION; FOOD & BEVERAGE SERVICE ACTIVITIES

In the second quarter of 2019, the SPPI for Accommodation; Food & Beverage Service Activities increased 2.2 per cent year-on-year. The increase was driven by Restaurants & Mobile Food Service Activities (+2.9%), Beverage Serving Activities (+1.0%), Short-term Accommodation Activities (+0.5%) and Event Catering & Other Food Service Activities (+0.2%) indices.

Quarter-to-quarter comparison showed the index increased 0.3 per cent. This increase was contributed by Restaurants & Mobile Food Service Activities (+0.4%), Beverage Serving Activities (+0.3%) and Event Catering & Other Food Service Activities (+0.1%) indices. Meanwhile, the index of Short-term Accommodation Activities was unchanged.

INFORMATION & COMMUNICATION

Annual comparison for the second quarter of 2019 showed the SPPI for Information & Communication sub-sector increased 0.1 per cent. The increase was driven by Computer Programming, Consultancy & Related Activities (+0.1%) and Wireless Telecommunication Activities (+0.1%) indices.

Quarter-to-quarter comparison also recorded an increase of 0.1 per cent and contributed by the index of Wireless Telecommunication Activities (+0.2%).

REAL ESTATE ACTIVITIES

The SPPI for Real Estate Activities sub-sector grew 0.8 per cent in the second quarter of 2019 as compared to the same period of the previous year. Quarter-on-quarter comparison, the SPPI for this sub-sector recorded an increase of 0.2 per cent.

PROFESSIONAL

The SPPI for Professional sub-sector showed no changes as compared to the previous year. However, the index of Accounting, Bookkeeping & Auditing Activities; Tax Consultancy increased 0.1 per cent. The index of Architectural & Engineering Activities; Related Technical Consultancy remained the same. On a quarterly basis, the SPPI for Professional sub-sector also was unchanged.

EDUCATION

The SPPI for Education sub-sector increased 0.9 per cent in the second quarter of 2019 as compared to the same quarter of 2018. The increase was contributed by Pre-Primary & Primary Education (+2.0%), Secondary Education (+1.2%), Other Education (+1.0%) and Higher Education (+0.6%) indices.

Compared to the previous quarter, SPPI for Education sub-sector grew 0.1 per cent, driven by the increase in the index of Higher Education (+0.1%). Meanwhile, Pre-Primary & Primary Education, Secondary Education and Other Education indices did not record any changes.

HEALTH

The SPPI for Health sub-sector recorded 0.3 per cent increase year-on-year. The increase was contributed by Hospital Activities (+0.3%) and Medical & Dental Practice Activities (+0.3%) indices, followed by the index of Other Human Health Activities (+0.1%). As for quarterly comparisons, the SPPI for Health sub-sector was unchanged.

ARTS, ENTERTAINMENT & RECREATION

The SPPI for Arts, Entertainment & Recreation sub-sector registered 1.1 per cent growth for the second quarter of 2019 as compared to the same period last year. The growth was driven by the increases in Gambling & Betting Activities (+1.2%) and Other Amusement & Recreation Activities (+0.1%) indices. However, the index of Sports Activities decreased 0.1 per cent.

On a quarterly basis, the SPPI for Arts, Entertainment & Recreation sub-sector increased 0.5 per cent, led by Gambling & Betting Activities (+0.6%), Other Amusement & Recreation Activities (+0.2%) and Sports Activities (+0.1%) indices.

Released by:

**DATO' SRI DR. MOHD UZIR MAHIDIN
CHIEF STATISTICIAN MALAYSIA
DEPARTMENT OF STATISTICS, MALAYSIA**

 DrUzir_Mahidin   Dr_Uzir

#myHariBulan# #myBulan# #myTahun#

Contact person:

Rohaida binti Mohamad
Public Relation Officer
Strategic Communication and International Division
Department of Statistics, Malaysia

Tel : +603-8885 7942

Fax : +603-8888 9248

Email : rohaida.mohamad[at]dosm.gov.my

Contact person:

Baharudin Mohamad
Public Relation Officer
Strategic Communication and International Division
Department of Statistics Malaysia

Tel : +603-8090 4681

Fax : +603-8888 9248

Email : baharudin[at]dosm.gov.my

Copyright ©2026 Department of Statistics Malaysia Official Portal. All Rights Reserved.