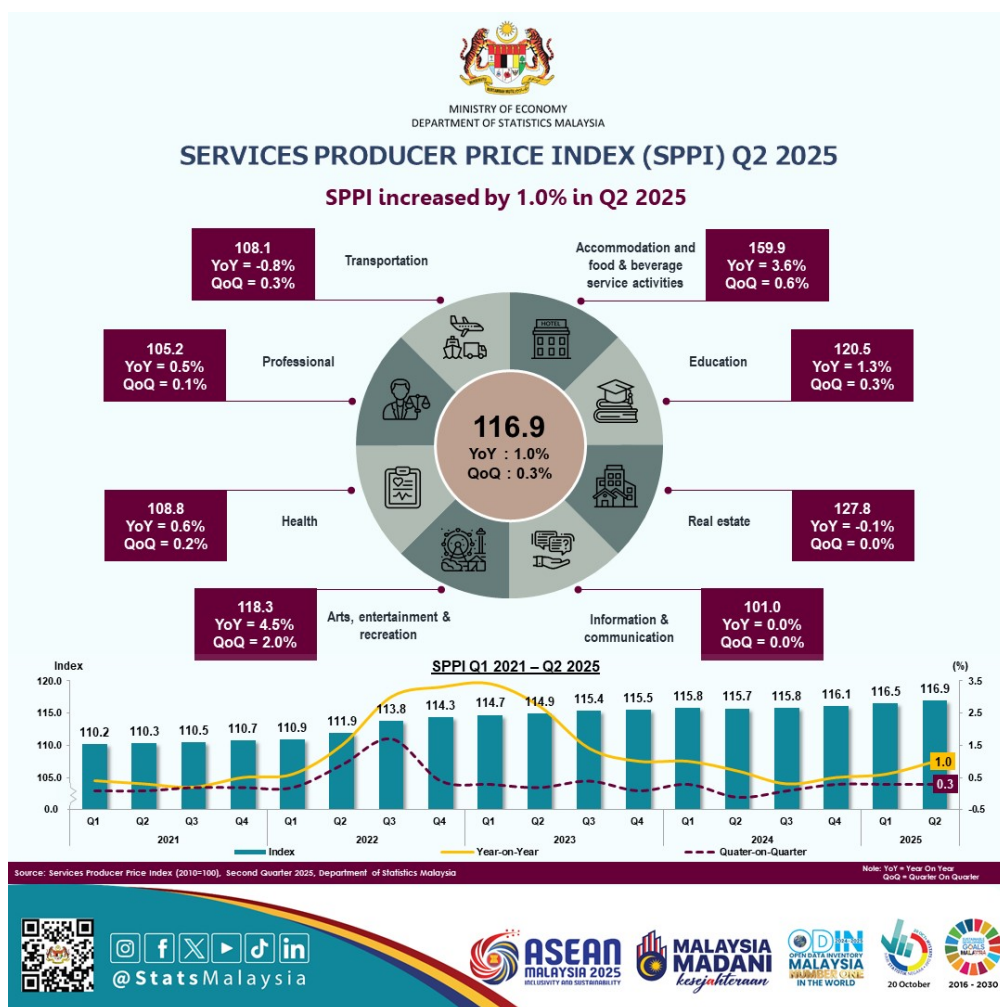




MINISTRY OF ECONOMY  
DEPARTMENT OF STATISTICS MALAYSIA

## SERVICES PRODUCER PRICE INDEX, SECOND QUARTER 2025



## SERVICES PRODUCER PRICE INDEX (2010=100)

### SECOND QUARTER 2025

- The SPPI registered a year-on-year increase of 1.0 per cent in the second quarter of 2025, as compared to a 0.6 per cent rise in the previous quarter.
- The Arts, entertainment & recreation index increased by 4.5 per cent, moderating from a 6.6 per cent increase in the previous quarter. This was primarily driven by the Other amusement and recreation activities index (1.9%). The Accommodation and food & beverage service activities index also continued its upward trend, rising by 3.6 per cent, similar in the first quarter of 2025. This was supported by increases in Restaurants and mobile food service activities index (4.2%) and Beverage service activities index (2.7%). Other indices that recorded increases were Education (1.3%), Health (0.6%) and Professional (0.5%).
- In contrast, the Transportation index declined by 0.8 per cent, albeit a smaller contraction compared to the 3.1 per cent drop in the previous quarter. The decrease was mainly attributed to a decrease in the Passenger air transport index (-4.8%). The Real estate activities index also recorded a marginal decrease of 0.1 per cent, after an increase of 0.1 per cent in the previous month, influenced by Real estate activities on a contract basis index (-0.1%). Meanwhile, the Information & communication index remained unchanged.
- Quarter-on-quarter basis, SPPI increased by 0.3 per cent, maintaining the same rate as in the previous quarter. The increase was primarily attributed to Arts, entertainment & recreation index (2.0%) and Accommodation and food & beverage service activities (0.6%). Meanwhile, both Transportation and Education indices registered an increase of 0.3 per cent, respectively. Other indices that contributed to the modest overall increase were Health (0.2%) and Professional (0.1%). However, Information & communication and Real estate activities indices remained unchanged in this quarter.

**Table 1: Services Producer Price Index, Second Quarter of 2025**

Subsector	Index			Percentage Change (%)	
	Q2 2024	Q1 2025	Q2 2025	Q2 2025/ Q1 2025	Q2 2025/ Q2 2024
<b>TOTAL</b>	<b>115.7</b>	<b>116.5</b>	<b>116.9</b>	<b>0.3</b>	<b>1.0</b>
Transportation	109.0	107.8	108.1	0.3	-0.8
Accommodation and food & beverage service activities	154.3	158.9	159.9	0.6	3.6
Information & communication	101.0	101.0	101.0	0.0	0.0
Real estate activities	127.9	127.8	127.8	0.0	-0.1
Professional	104.7	105.1	105.2	0.1	0.5
Education	119.0	120.1	120.5	0.3	1.3
Health	108.1	108.6	108.8	0.2	0.6
Arts, entertainment & recreation	113.2	116.0	118.3	2.0	4.5

#### Contact person:

Baharudin Mohamad

Public Relation Officer

Strategic Communication and International Division

Department of Statistics Malaysia

Tel : +603-8090 4681

Fax : +603-8888 9248

Email : [baharudin\[at\]dosm.gov.my](mailto:baharudin[at]dosm.gov.my)

**Copyright ©2026 Department of Statistics Malaysia Official Portal. All Rights Reserved.**