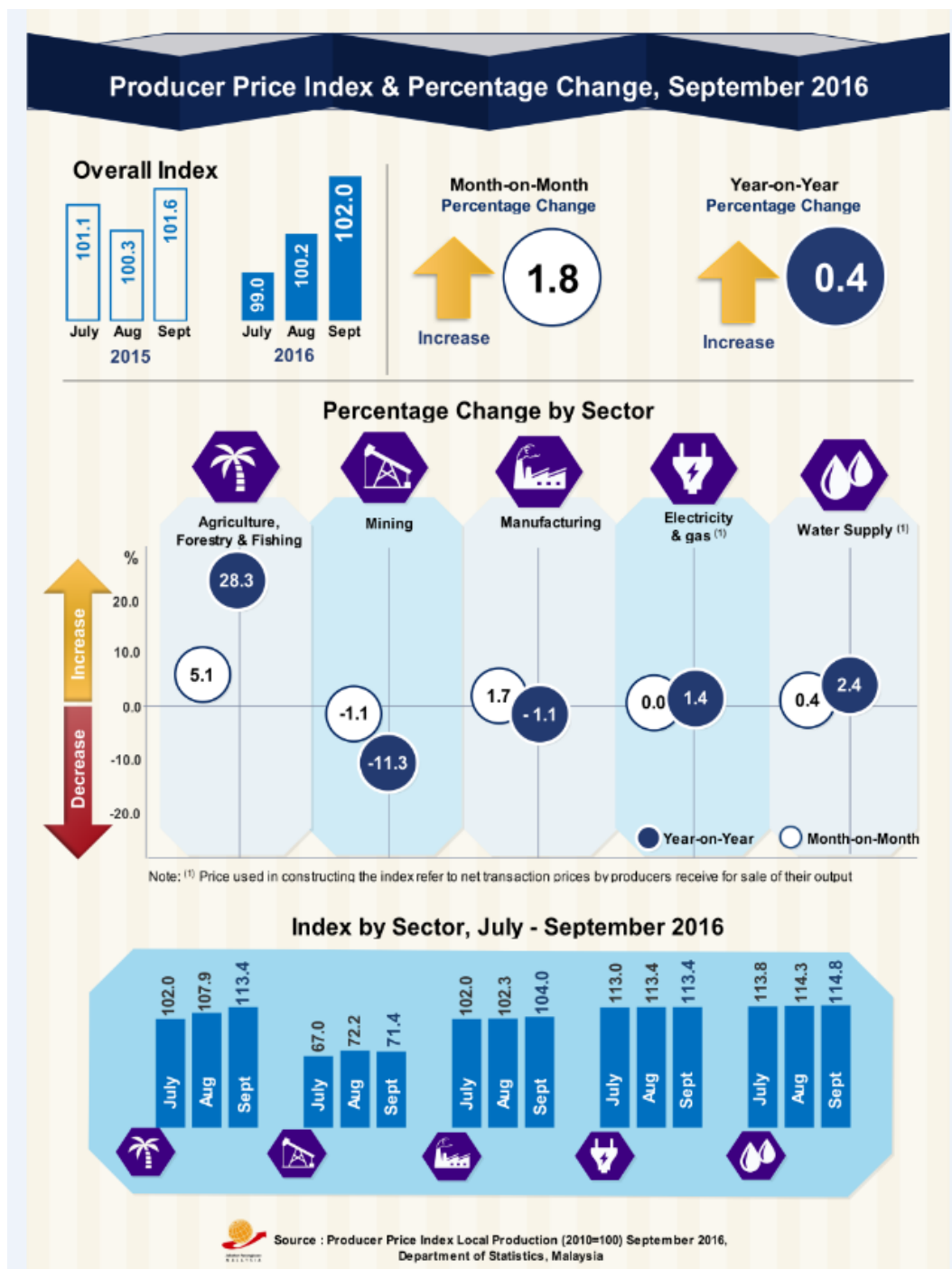




MINISTRY OF ECONOMY  
DEPARTMENT OF STATISTICS MALAYSIA

PRODUCER PRICE INDEX MALAYSIA SEPTEMBER 2016



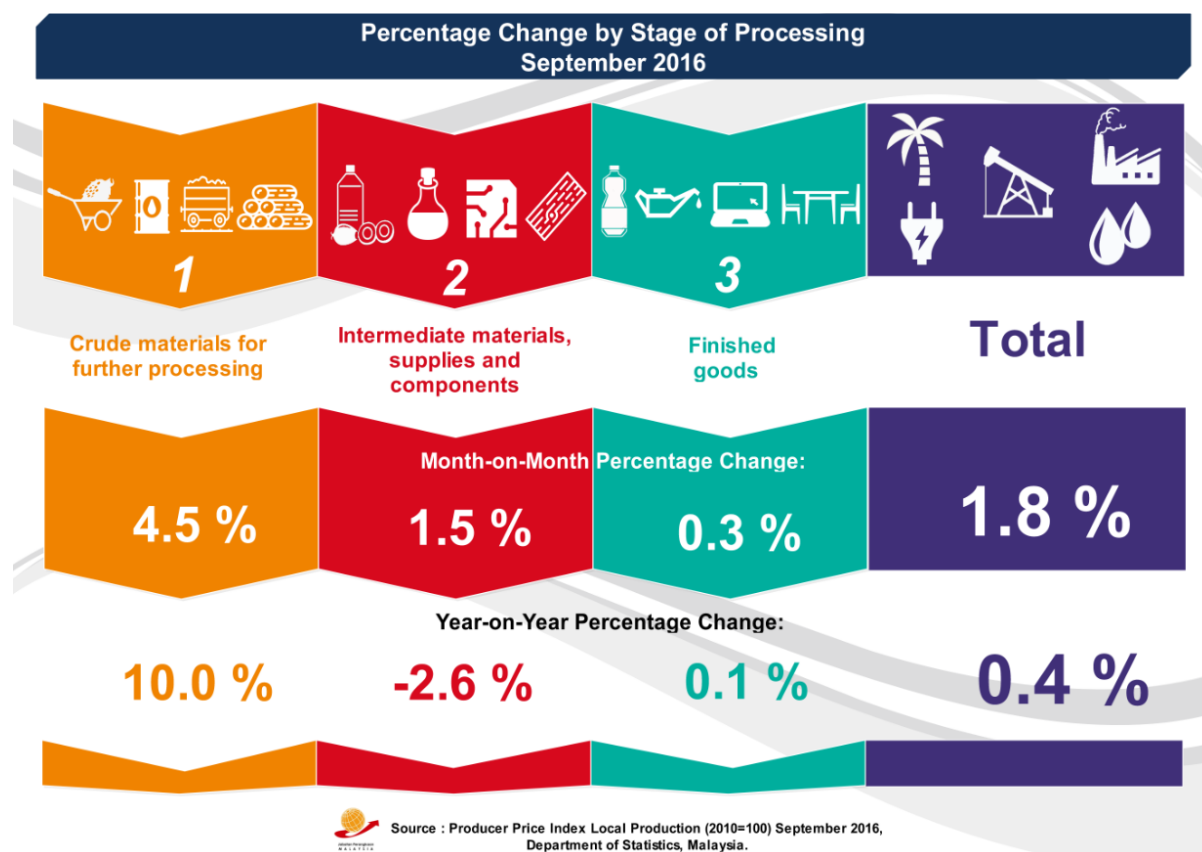
## Producer Price Index (2010=100) By Sector (MSIC 2008)

Year-on-year comparison showed that the PPI for local production went up 0.4 per cent in September 2016, the first positive growth after declining for past 24 months. The highest increase was recorded by Agriculture, forestry & fishing index (+28.3%) followed by Water supply (+2.4%) and Electricity & gas (+1.4%). In contrast, the index for Mining and Manufacturing decreased by 11.3 per cent and 1.1 per cent respectively. [Table I]

The PPI for local production inclined by 1.8 per cent in September 2016 compared to August 2016. This was due to increases in three sectors namely, Agriculture, forestry & fishing (+5.1%), Manufacturing (+1.7%) and Water supply (+0.4%). However, Mining index declined by (-1.1%), while, Electricity & gas index remained unchanged.

**Table I : Producer Price Index (2010=100) Local Production By Sector (MSIC 2008), Malaysia**

Sector	Code	Weight	Index	Percentage Change Month-on-Month			Percentage Change Year-on-Year		
				July 2016/ June 2016	Aug 2016/ July 2016	Sept 2016/ Aug 2016	July 2016/ July 2015	Aug 2016/ Aug 2015	Sept 2016/ Sept 2015
<b>Total</b>		<b>100.0</b>	<b>102.0</b>	<b>-0.9</b>	<b>1.2</b>	<b>1.8</b>	<b>-2.1</b>	<b>-0.1</b>	<b>0.4</b>
<b>Agriculture, Forestry &amp; Fishing</b>	<b>A</b>	<b>8.2</b>	<b>113.4</b>	<b>-2.8</b>	<b>5.8</b>	<b>5.1</b>	<b>10.7</b>	<b>23.3</b>	<b>28.3</b>
<b>Mining</b>	<b>B</b>	<b>9.7</b>	<b>71.4</b>	<b>-8.5</b>	<b>7.8</b>	<b>-1.1</b>	<b>-17.5</b>	<b>-6.7</b>	<b>-11.3</b>
<b>Manufacturing</b>	<b>C</b>	<b>78.8</b>	<b>104.0</b>	<b>-0.1</b>	<b>0.3</b>	<b>1.7</b>	<b>-2.0</b>	<b>-1.6</b>	<b>-1.1</b>
<b>Electricity &amp; gas</b>	<b>D</b>	<b>3.1</b>	<b>113.4</b>	<b>-0.3</b>	<b>0.4</b>	<b>0.0</b>	<b>0.6</b>	<b>1.3</b>	<b>1.4</b>
<b>Water supply</b>	<b>E</b>	<b>0.3</b>	<b>114.8</b>	<b>-1.0</b>	<b>0.4</b>	<b>0.4</b>	<b>2.9</b>	<b>1.9</b>	<b>2.4</b>



The PPI for local production by stage of processing (SOP) inclined by 1.8 per cent in September 2016 compared to the previous month. This inclination was due to an increase in Crude materials for further processing (+4.5%), Intermediate materials, supplies and components (+1.5%) and Finished goods (+0.3%). [Table II]

As compared with the same month a year ago, the PPI for local production by SOP for September 2016 increased by 0.4 per cent. This was due to increases in index for Crude materials for further processing (+10.0%) and Finished goods (+0.1%). However, index for Intermediate materials, supplies and components decreased by 2.6 per cent.

**Table II : Producer Price Index (2010=100), Local Production By Stage of Processing**

Stage of Processing	Code	Weight	Index	Percentage Change Month-on-Month			Percentage Change Year-on-Year		
			Sept 2016	July 2016/ June 2016	Aug 2016/ July 2016	Sept 2016/ Aug 2016	July 2016/ July 2015	Aug 2016/ Aug 2015	Sept 2016/ Sept 2015
<b>Total</b>		<b>100.0</b>	<b>102.0</b>	<b>-0.9</b>	<b>1.2</b>	<b>1.8</b>	<b>-2.1</b>	<b>-0.1</b>	<b>0.4</b>
<b>Crude materials for further processing</b>	<b>1</b>	<b>20.3</b>	<b>97.7</b>	<b>-5.6</b>	<b>3.0</b>	<b>4.5</b>	<b>-2.0</b>	<b>9.7</b>	<b>10.0</b>
<b>Intermediate materials, supplies and components</b>	<b>2</b>	<b>53.6</b>	<b>103.3</b>	<b>0.4</b>	<b>1.3</b>	<b>1.5</b>	<b>-3.4</b>	<b>-3.2</b>	<b>-2.6</b>
<b>Finished goods</b>	<b>3</b>	<b>26.1</b>	<b>102.6</b>	<b>-0.3</b>	<b>0.2</b>	<b>0.3</b>	<b>0.2</b>	<b>0.2</b>	<b>0.1</b>

**Released By:**

**THE OFFICE OF CHIEF STATISTICIAN MALAYSIA**  
**DEPARTMENT OF STATISTICS, MALAYSIA**  
**31 October 2016**

**Contact person:**

Ho Mei Kei  
Public Relation Officer  
Corporate and User Services Division  
Department of Statistics, Malaysia  
Tel : +603-8885 7942  
Fax : +603-8888 9248  
Email : mkho[at]stats.gov.my

**Contact person:**

Baharudin Mohamad  
Public Relation Officer  
Strategic Communication and International Division  
Department of Statistics Malaysia  
Tel : +603-8090 4681  
Fax : +603-8888 9248  
Email : baharudin[at]dosm.gov.my

**Copyright ©2025 Department of Statistics Malaysia Official Portal. All Rights Reserved.**