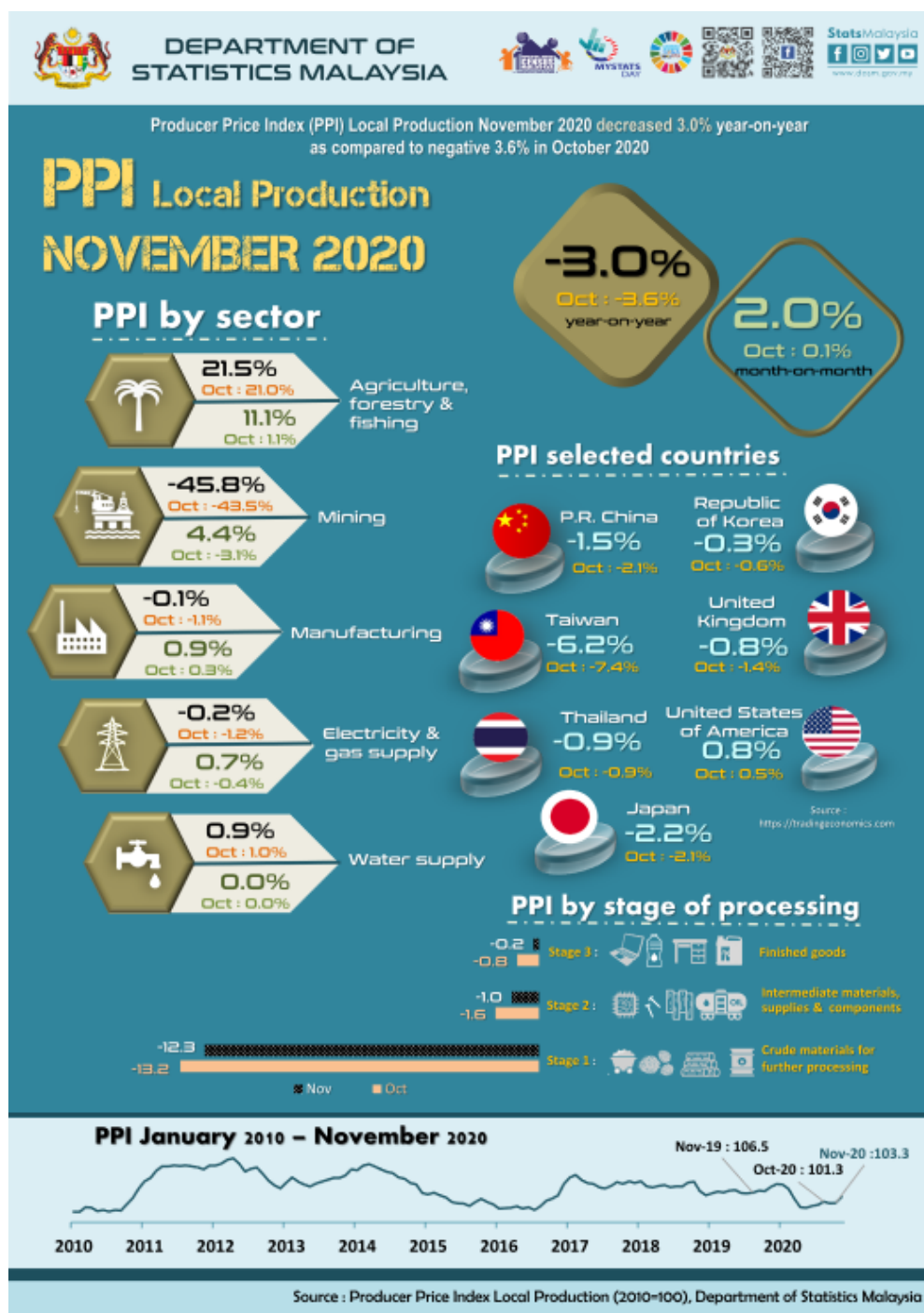




MINISTRY OF ECONOMY  
DEPARTMENT OF STATISTICS MALAYSIA

## PRODUCER PRICE INDEX MALAYSIA NOVEMBER 2020



## PRODUCER PRICE INDEX (2010=100) BY SECTOR (MSIC 2008)

The Producer Price Index (PPI) local production year-on-year improved to negative 3.0 per cent in November 2020 as compared to negative 3.6 per cent recorded in October 2020. The decrease in the overall index was attributed by the decline in Mining (-45.8%), Electricity & gas supply (-0.2%) and Manufacturing (-0.1%). Conversely, the index of Agriculture, forestry & fishing and Water supply rose 21.5 per cent and 0.9 per cent respectively.

On a monthly basis, the PPI local production grew 2.0 per cent in November 2020. Higher prices were reported by four sectors which comprised Agriculture, forestry & fishing (11.1%), Mining (4.4%), Manufacturing (0.9%) and Electricity & gas supply (0.7%). Conversely, the index for Water supply remained unchanged. PPI local production for the period of January to November 2020 decreased 2.7 per cent, equivalent to the changes for the period of January to October 2020.

**Table 1 : Producer Price Index (2010=100) Local Production by Sector (MSIC 2008), Malaysia**

			Index	Percentage Change					
				Year-on-Year			Month-on-Month		
Sector	Code	Weight	Nov 2020	Sept 2020/ Sept 2019	Oct 2020/ Oct 2019	Nov 2020/ Nov 2019	Sept 2020/ Aug 2020	Oct 2020/ Sept 2020	Nov 2020/ Oct 2020
<b>Total</b>		<b>100.000</b>	<b>103.3</b>	<b>-3.9</b>	<b>-3.6</b>	<b>-3.0</b>	<b>-0.5</b>	<b>0.1</b>	<b>2.0</b>
Agriculture, forestry & fishing	A	6.730	127.5	19.3	21.0	21.5	2.5	1.1	11.1
Mining	B	7.927	59.3	-43.2	-43.5	-45.8	-9.1	-3.1	4.4
Manufacturing	C	81.571	105.8	-1.3	-1.1	-0.1	-0.2	0.3	0.9
Electricity & gas supply	D	3.442	116.7	-0.9	-1.2	-0.2	0.1	-0.4	0.7
Water supply	E	0.330	112.7	1.0	1.0	0.9	0.3	0.0	0.0

## PRODUCER PRICE INDEX BY STAGE OF PROCESSING

As compared to the same month a year ago, all stages of processing decreased. Crude materials for further processing slipped by 12.3 per cent followed by Intermediate materials, supplies & components 1.0 per cent and Finished goods 0.2 per cent.

On a monthly basis, Crude materials for further processing edged up by 7.6 per cent in November 2020 as compared to negative 1.7 per cent recorded last month. Similarly, Intermediate materials, supplies & components and Finished goods also showed an increase of 1.0 per cent and 0.4 per cent respectively.

**Table 2 : Producer Price Index (2010=100) Local Production by Stage of Processing**

Stage of Processing	Code	Weight	Index Nov 2020	Percentage Change					
				Year-on-Year			Month-on-Month		
				Sept 2020/ Sept 2019	Oct 2020/ Oct 2019	Nov 2020/ Nov 2019	Sept 2020/ Aug 2020	Oct 2020/ Sept 2020	Nov 2020/ Oct 2020
<b>Total</b>		<b>100.000</b>	<b>103.3</b>	<b>-3.9</b>	<b>-3.6</b>	<b>-3.0</b>	<b>-0.5</b>	<b>0.1</b>	<b>2.0</b>
Crude materials for further processing	1	16.410	97.5	-13.2	-13.2	-12.3	-2.0	-1.7	7.6
Intermediate materials, supplies and components	2	56.119	106.1	-2.0	-1.6	-1.0	0.1	0.8	1.0
Finished goods	3	27.471	101.4	-1.1	-0.8	-0.2	-0.8	0.0	0.4

**Released by:**

**DATO' SRI DR. MOHD UZIR MAHIDIN**  
**CHIEF STATISTICIAN MALAYSIA**  
**DEPARTMENT OF STATISTICS, MALAYSIA**

 DrUzir\_Mahidin   Dr\_Uzir

#myHariBulan# #myBulan# #myTahun#

**Contact person:**

Mohd Yusrizal Ab Razak  
Public Relation Officer  
Strategic Communication and International Division  
Department of Statistics, Malaysia  
Tel : +603-8885 7942  
Fax : +603-8888 9248  
Email : yusrizal.razak[at]dosm.gov.my

**Contact person:**

Baharudin Mohamad  
Public Relation Officer

Strategic Communication and International Division  
Department of Statistics Malaysia  
Tel : +603-8090 4681  
Fax : +603-8888 9248  
Email : baharudin[at]dosm.gov.my

**Copyright ©2025 Department of Statistics Malaysia Official Portal. All Rights Reserved.**