



MINISTRY OF ECONOMY
DEPARTMENT OF STATISTICS MALAYSIA

PRODUCER PRICE INDEX MALAYSIA MAY 2018



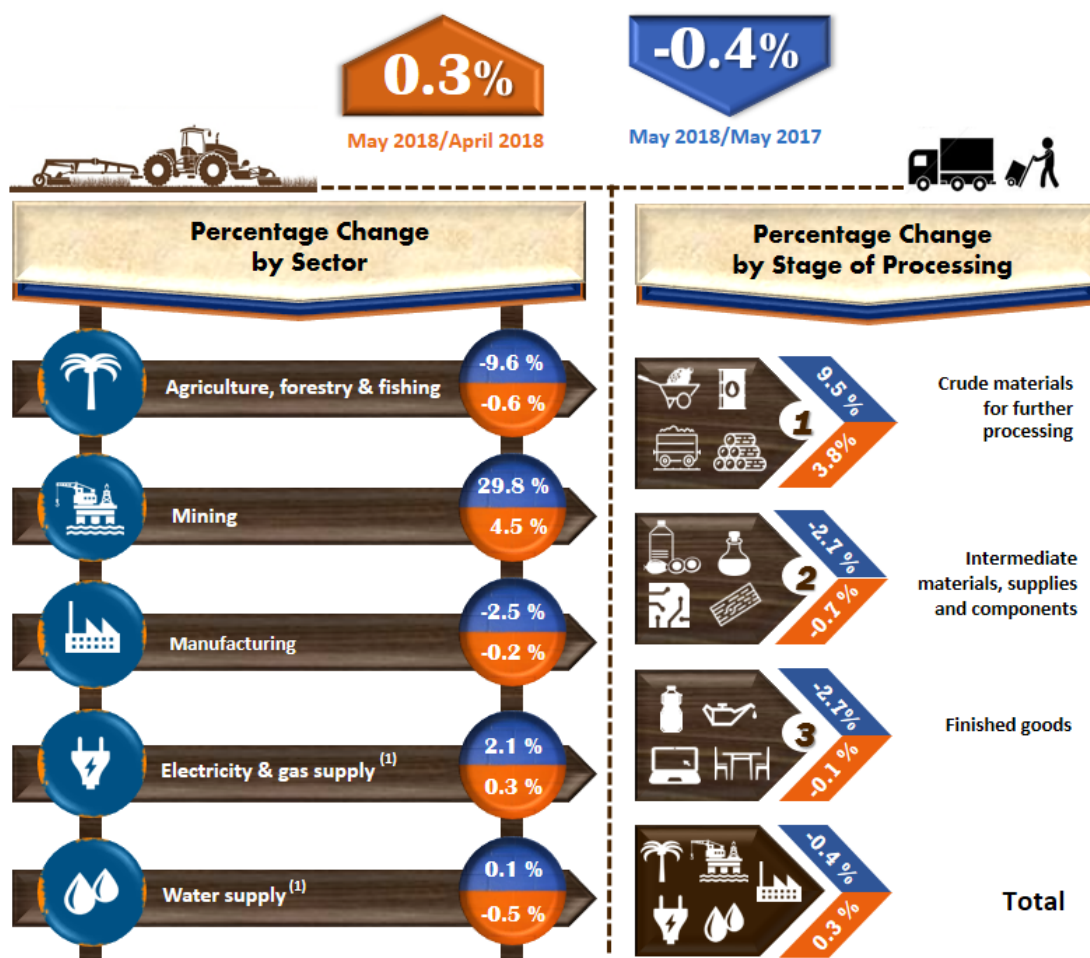
Department of Statistics, Malaysia
<https://www.dosm.gov.my>



@StatsMalaysia

PPI FOR LOCAL PRODUCTION, MAY 2018

PPI for Local Production **decreased 0.4%** in May 2018
compared to May 2017



Note: ⁽¹⁾ The price used in the calculation of the index refers to the net transaction prices for sales of output received by producers

Source: Producer Price Index Local Production (2010=100), May 2018

Producer Price Index (2010=100) by Sector (MSIC 2008)

The Producer Price Index (PPI) for local production decreased 0.4 per cent on a year-on-year basis in May 2018 as compared to a decrease of 0.8 per cent in April 2018. Among the sectors which declined during this period were Agriculture, forestry & fishing (-9.6%) and Manufacturing (-2.5%). Meanwhile, the index that registered increases were Mining (+29.8%), Electricity & gas supply (+2.1%) and Water supply (+0.1%) sectors.

On a monthly basis, PPI for local production rose 0.3 per cent in May 2018. This was due to the increases in Mining (+4.5%) and Electricity & gas supply (+0.3%). Meanwhile, the following indices declined: Agriculture, forestry & fishing (-0.6%); Water supply (-0.5%) and Manufacturing (-0.2%). [Table I]

Table I: Producer Price Index (2010=100) Local Production by Sector (MSIC 2008), Malaysia

Sector	Code	Weights	Index	Percentage Change Month-on-Month			Percentage Change Year-on-Year		
			May 2018	Mar. 2018/ Feb. 2018	Apr. 2018/ Mar. 2018	May 2018/ Apr. 2018	Mar. 2018/ Mar. 2017	Apr. 2018/ Apr. 2017	May 2018/ May 2017
Total		100.000	107.1	▼ -0.4	▲ 0.5	▲ 0.3	▼ -2.2	▼ -0.8	▼ -0.4
Agriculture, forestry & fishing	A	6.730	101.9	▼ -2.9	▼ -1.6	▼ -0.6	▼ -11.0	▼ -6.8	▼ -9.6
Mining	B	7.927	110.5	▼ -0.1	▲ 8.5	▲ 4.5	▲ 5.8	▲ 15.9	▲ 29.8
Manufacturing	C	81.571	106.7	▼ -0.4	▼ -0.2	▼ -0.2	▼ -2.3	▼ -2.0	▼ -2.5
Electricity & gas supply	D	3.442	116.6	▲ 0.8	▼ -0.1	▲ 0.3	▲ 1.3	▲ 1.5	▲ 2.1
Water supply	E	0.330	114.6	▼ -0.2	▲ 1.1	▼ -0.5	▲ 0.1	▲ 1.1	▲ 0.1

PRODUCER PRICE INDEX BY STAGE OF PROCESSING

The PPI for local production by stage of processing (SOP) increased by 0.3 per cent in May 2018. This was due to the positive changes in the index for Crude materials for further processing (+3.8%). However, the index for Intermediate materials, supplies & components slipped 0.7 per cent and Finished goods declined 0.1 per cent.

As compared with the same month a year ago, the PPI for local production by SOP for May 2018 decreased 0.4 per cent. The decline was attributed by Intermediate materials, supplies & components and Finished goods which decreased by 2.7 per cent respectively. Meanwhile, the index for Crude materials for further processing recorded an increase of 9.5 per cent. [Table II]

TABLE II: PRODUCER PRICE INDEX (2010=100), LOCAL PRODUCTION BY STAGE OF PROCESSING

Stage of Processing	Code	Weights	Index	Percentage Change Month-on-Month			Percentage Change Year-on-Year		
			May 2018	Mar. 2018/ Feb. 2018	Apr. 2018/ Mar. 2018	May 2018/ Apr. 2018	Mar. 2018/ Mar. 2017	Apr. 2018/ Apr. 2017	May 2018/ May 2017
Total		100.000	107.1	▼ -0.4	▲ 0.5	▲ 0.3	▼ -2.2	▼ -0.8	▼ -0.4
Crude materials for further processing	1	16.410	114.2	▼ -1.0	▲ 2.5	▲ 3.8	▼ -0.7	▲ 3.7	▲ 9.5
Intermediate materials, supplies and components	2	56.119	107.5	▼ -0.6	▲ 0.2	▼ -0.7	▼ -2.8	▼ -1.6	▼ -2.7
Finished goods	3	27.471	101.0	▲ 0.2	▼ -0.5	▼ -0.1	▼ -2.2	▼ -2.6	▼ -2.7

Released By:

DATO' SRI DR. MOHD UZIR MAHIDIN
CHIEF STATISTICIAN MALAYSIA
DEPARTMENT OF STATISTICS, MALAYSIA

 DrUzir_Mahidin   Dr_Uzir

29 June 2018

Contact person:

Ho Mei Kei
 Public Relation Officer
 Strategic Communication and International Division
 Department of Statistics, Malaysia
 Tel : +603-8885 7942
 Fax : +603-8888 9248
 Email : mkho[at]dosm.gov.my

Contact person:

Baharudin Mohamad
Public Relation Officer
Strategic Communication and International Division
Department of Statistics Malaysia
Tel : +603-8090 4681
Fax : +603-8888 9248
Email : baharudin[at]dosm.gov.my

Copyright ©2025 Department of Statistics Malaysia Official Portal. All Rights Reserved.