



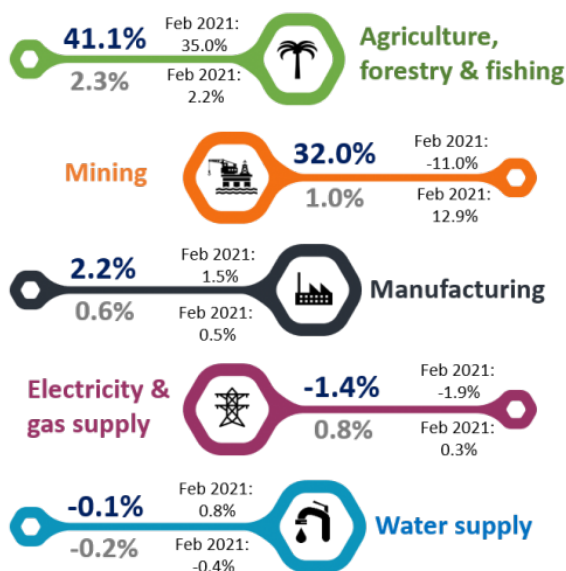
MINISTRY OF ECONOMY  
DEPARTMENT OF STATISTICS MALAYSIA

## PRODUCER PRICE INDEX MALAYSIA MARCH 2021



### PPI Local Production March 2021

#### PPI by sector



#### Producer Price Index (PPI)

Local Production March 2021 **increased 6.7%**  
year-on-year as compared to 2.7% in February 2021

**6.7%**

Feb 2021: 2.7%  
year-on-year

**0.7%**

Feb 2021: 1.5%  
month-on-month

#### PPI selected countries



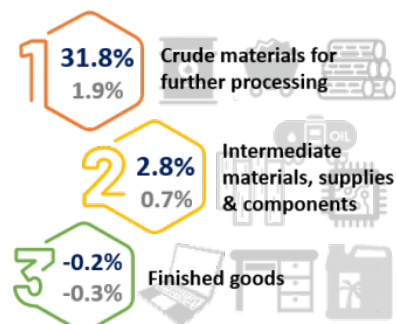
Source : tradingeconomics.com

#### PPI January 2010 – March 2021



Source: Producer Price Index Local Production (2010=100), Department of Statistics Malaysia

#### PPI by stage of processing



## PRODUCER PRICE INDEX (2010=100) BY SECTOR (MSIC 2008)

The Producer Price Index (PPI) local production continued to increase with a growth of 6.7 per cent in March 2021, 4.0 point higher than 2.7 per cent recorded last month. Based on PPI record, this is the highest increase since August 2017. The growth was driven by the increase in the Mining index which rebounded to 32.0 per cent as compared to negative 11.0 per cent in the previous month. The Agriculture, forestry & fishing index marked a new high growth of 41.1 per cent as commodities recorded higher prices this month. Subsequently, Manufacturing index also registered an increase of 2.2 per cent resulted from a higher price of petroleum and agriculture commodities. Meanwhile, Electricity & Gas supply and Water supply indices recorded a decline of 1.4 per cent and 0.1 per cent respectively.

On a monthly basis, the PPI local production recorded an increase of 0.7 per cent in March 2021, down from 1.5 per cent in February 2021. All four indices continued its momentum of growth; Agriculture, forestry & fishing (2.3%), Mining (1.0%), Manufacturing (0.6%) and Electricity & gas supply (0.8%). Meanwhile, the Water supply index fell 0.2 per cent.

**Table 1 : Producer Price Index (2010=100) Local Production by Sector (MSIC 2008), Malaysia**

Sector	Code	Weight	Index	Percentage Change					
				Year-on-Year			Month-on-Month		
			Mar 2021	Jan 2021/ Jan 2020	Feb 2021/ Feb 2020	Mar 2021/ Mar 2020	Jan 2021/ Dec 2020	Feb 2021/ Jan 2021	Mar 2021/ Feb 2021
<b>Total</b>		<b>100.000</b>	<b>109.6</b>	<b>-0.1</b>	<b>2.7</b>	<b>6.7</b>	<b>2.0</b>	<b>1.5</b>	<b>0.7</b>
Agriculture, forestry & fishing	A	6.730	143.1	22.6	35.0	41.1	3.0	2.2	2.3
Mining	B	7.927	85.0	-28.3	-11.0	32.0	11.3	12.9	1.0
Manufacturing	C	81.571	109.2	1.1	1.5	2.2	1.3	0.5	0.6
Electricity & gas supply	D	3.442	116.8	-1.9	-1.9	-1.4	-0.1	0.3	0.8
Water supply	E	0.330	111.7	0.5	0.8	-0.1	-0.2	-0.4	-0.2

## PRODUCER PRICE INDEX FOR FIRST QUARTER 2021

The PPI local production for the first quarter of 2021 rose 3.0 per cent to 108.5 from 105.3 in the same quarter of the previous year. The growth was due to the higher indices of Agriculture, forestry & fishing (32.6%), Manufacturing (1.6%) and Water supply (0.4%). Meanwhile, the Mining and Electricity & gas supply indices both recorded a decline of 7.3 per cent and 1.7 per cent respectively. For quarterly comparison, the PPI local production increased by 5.1 per cent from 2.0 per cent in the fourth quarter of 2020.

**Table 2 : Average Index and Percentage Change of Quarterly PPI Local Production by Sector**

Sector	Weights	Index			% Change	
		Q1 2020	Q4 2020	Q1 2021	Q1 2021/ Q1 2020	Q1 2021/ Q4 2020
<b>Total</b>	<b>100.000</b>	<b>105.3</b>	<b>103.2</b>	<b>108.5</b>	<b>3.0</b>	<b>5.1</b>
Agriculture, forestry & fishing	6.730	105.6	125.1	140.0	32.6	11.9
Mining	7.927	87.7	61.0	81.3	-7.3	33.3
Manufacturing	81.571	106.9	105.8	108.6	1.6	2.6
Electricity & gas supply	3.442	118.1	116.1	116.1	-1.7	0.0
Water supply	0.330	111.5	112.6	112.0	0.4	-0.5

## PRODUCER PRICE INDEX BY STAGE OF PROCESSING

The index of Crude materials for further processing surged to 31.8 per cent from 10.0 per cent in February 2021. The index of Intermediate materials, supplies & components also increased 2.8 per cent. However, the Finished goods recorded a negative 0.2 per cent.

Month on Month, the Crude materials for further processing index increased by 1.9 per cent from 5.4 per cent in the previous month. The Intermediate materials, supplies & components index also recorded an increase of 0.7 per cent (February 2021: 0.9%). However, the index of Finished goods decreased 0.3 per cent.

**Table 3 : Producer Price Index (2010=100) Local Production by Stage of Processing**

			Index						
			Year-on-Year			Percentage Change			
						Month-on-Month			
Stage of Processing	Code	Weight	Mar 2021	Jan 2021/ Jan 2020	Feb 2021/ Feb 2020	Mar 2021/ Mar 2020	Jan 2021/ Dec 2020	Feb 2021/ Jan 2020	Mar 2021/ Feb 2020
<b>Total</b>		<b>100.000</b>	<b>109.6</b>	<b>-0.1</b>	<b>2.7</b>	<b>6.7</b>	<b>2.0</b>	<b>1.5</b>	<b>0.7</b>
Crude materials for further processing	1	16.410	118.1	-3.4	10.0	31.8	6.2	5.4	1.9
Intermediate materials, supplies and components	2	56.119	110.6	1.1	1.5	2.8	1.2	0.9	0.7
Finished goods	3	27.471	101.5	0.1	0.4	-0.2	0.6	-0.1	-0.3

The full publication of the Producer Price Index Malaysia, March 2021 can be downloaded from [eStatistik](#) portal.

Released by:

**DATO' SRI DR. MOHD UZIR MAHIDIN**  
**CHIEF STATISTICIAN MALAYSIA**  
**DEPARTMENT OF STATISTICS, MALAYSIA**

 DrUzir\_Mahidin   Dr\_Uzir

#myHariBulan# #myBulan# #myTahun#

**Contact person:**

Mohd Yusrizal Ab Razak  
Public Relation Officer  
Strategic Communication and International Division  
Department of Statistics, Malaysia  
Tel : +603-8885 7942  
Fax : +603-8888 9248  
E-mail : yusrizal.razak[at]dosm.gov.my

**Contact person:**

Baharudin Mohamad  
Public Relation Officer  
Strategic Communication and International Division  
Department of Statistics Malaysia  
Tel : +603-8090 4681  
Fax : +603-8888 9248  
Email : baharudin[at]dosm.gov.my

**Copyright ©2025 Department of Statistics Malaysia Official Portal. All Rights Reserved.**