



MINISTRY OF ECONOMY  
DEPARTMENT OF STATISTICS MALAYSIA

---

## PRODUCER PRICE INDEX MALAYSIA FEBRUARY 2016

---

### Local Production

The Producer Price Index (PPI) for local production measures the average change in the prices of commodities charged by domestic producers of an industry in a reference month compared with the base year.

### Producer Price Index (2010=100) By Sector (MSIC 2008)

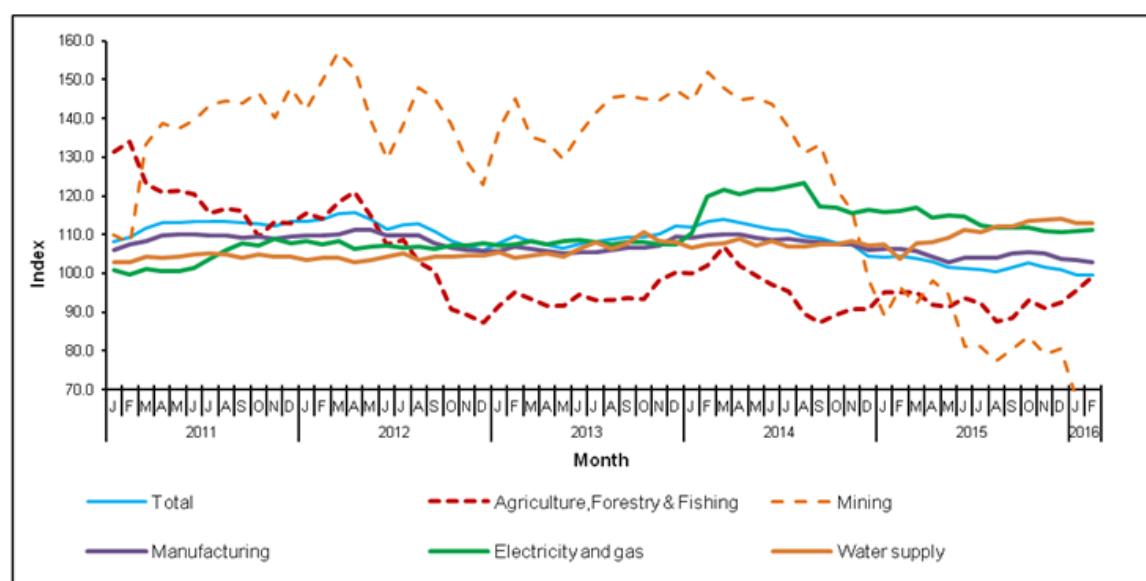
Year-on-year comparison showed that the PPI for local production fell 4.8 per cent in February 2016. The highest drop was recorded by Mining index (-27.8%), followed by Electricity & gas (-4.2%) and Manufacturing (-3.2%). Meanwhile, the index for Water supply and Agriculture, forestry & fishing showed an increase of 8.8 per cent and 4.2 per cent respectively. [Table I].

The PPI for local production inclined by 0.1 per cent in February 2016 as compared to January 2016. This was due to increases in Mining (+4.2%), Agriculture, forestry & fishing (+3.3%) and Electricity & gas (+0.2%). Meanwhile, the index for Manufacturing and Water supply decreased by 0.6 per cent and 0.1 percent respectively.

**Table I : Producer Price Index (2010=100) Local Production By Sector (MSIC 2008), Malaysia**

Sector	Code	Weight	Index	Percentage Change Month on Month			Percentage Change Year on Year		
				Feb. 2016	Dec. 2015 / Nov. 2015	Jan. 2016 / Dec. 2015	Feb. 2016 / Jan. 2016	Dec. 2015/ Dec. 2014	Jan. 2016/ Jan. 2015
<b>Total</b>		100.00	104.6	-0.7	-1.4	0.1	-3.4	-4.4	-4.8
<b>Agriculture, Forestry &amp; Fishing</b>	<b>A</b>	8.15	95.0	1.6	3.6	3.3	1.8	0.6	4.2
<b>Mining</b>	<b>B</b>	9.67	96.5	1.8	-16.9	4.2	-18.4	-24.7	-27.8
<b>Manufacturing</b>	<b>C</b>	78.79	106.2	-1.2	-0.4	-0.6	-2.2	-2.8	-3.2
<b>Electricity &amp; gas</b>	<b>D</b>	3.05	116.1	-0.1	0.2	0.2	-4.9	-4.1	-4.2
<b>Water supply</b>	<b>E</b>	0.34	103.8	0.3	-1.0	-0.1	6.5	5.2	8.8

**Chart I : Producer Price Index (2010=100) Local Production By Sector, 2011-2016**



### Producer Price Index By Stage of Processing

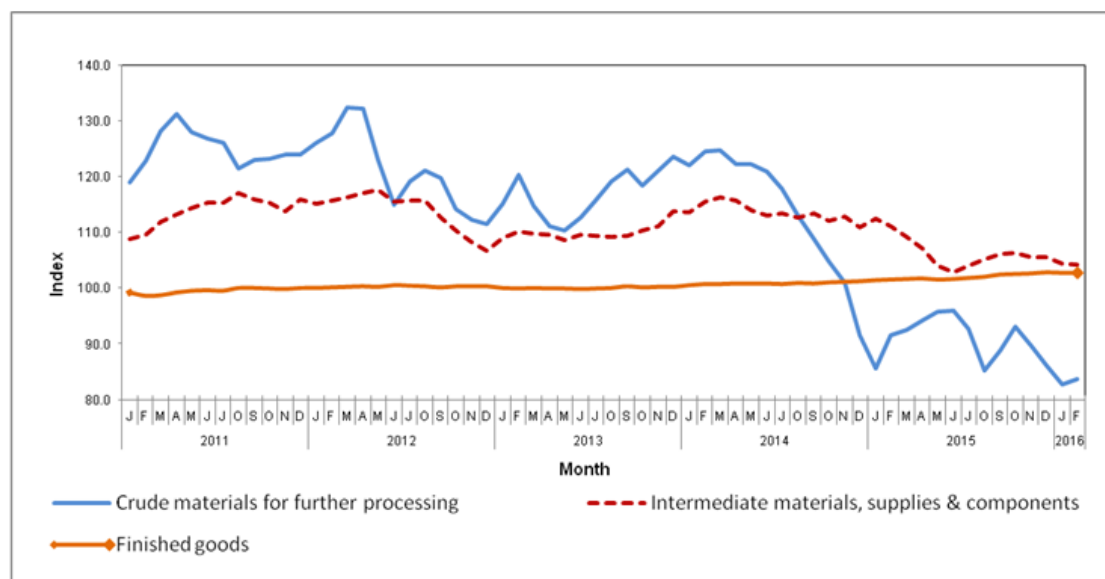
The PPI for local production by stage of processing (SOP) inclined by 0.1 per cent in February 2016 compared to the previous month. This inclination was due to an increase in Crude materials for further processing (+1.1%). However, Intermediate materials, supplies and components declined by 0.2 per cent and Finished goods remained unchanged. [Table II]

As compared with the same month a year ago, the PPI for local production by SOP for February 2016 dropped by 4.8 per cent. This was due to decreases in index for Crude materials for further processing (-8.6%) followed by index for Intermediate materials, supplies and components (-6.3%). However, index for Finished goods increased by 1.2 per cent.

**Table II : Producer Price Index (2010=100), Local Production By Stage of Processing**

Stage Of Processing	Code	Weight	Index	Percentage Change Month on Month			Percentage Change Year on Year		
			Feb. 2016	Dec. 2015 / Nov. 2015	Jan. 2016/ Dec. 2015	Feb. 2016 / Jan. 2016	Dec. 2015/ Dec. 2014	Jan. 2015/ Jan. 2014	Feb. 2016 / Feb. 2015
Total		100.00	104.6	-0.7	-1.4	0.1	-3.4	-4.4	-4.8
Crude materials for further processing	1	20.32	91.5	-4.0	-3.9	1.1	-6.0	-3.3	-8.6
Intermediate materials, supplies and components	2	53.56	111.1	-0.1	-1.1	-0.2	-4.9	-7.2	-6.3
Finished goods	3	26.12	101.6	0.2	-0.1	0.0	1.6	1.3	1.2

**Chart II : Producer Price Index (2010=100), Local Production By Stage of Processing, 2011-2016**



**RELEASED BY:**

**THE OFFICE OF CHIEF STATISTICIAN MALAYSIA  
DEPARTMENT OF STATISTICS MALAYSIA**

**31 MARCH 2016**

Contact person:

Ho Mei Kei  
Public Relation Officer  
Corporate and User Services Division  
Department of Statistics, Malaysia  
Tel : +603-8885 7942  
Fax : +603-8888 9248  
Email : mkho@stats.gov.my

**Contact person:**

Baharudin Mohamad  
Public Relation Officer  
Strategic Communication and International Division  
Department of Statistics Malaysia  
Tel : +603-8090 4681  
Fax : +603-8888 9248  
Email : baharudin[at]dosm.gov.my

**Copyright ©2025 Department of Statistics Malaysia Official Portal. All Rights Reserved.**