



MINISTRY OF ECONOMY
DEPARTMENT OF STATISTICS MALAYSIA

PRODUCER PRICE INDEX MALAYSIA DECEMBER 2017



Department of Statistics, Malaysia
<https://www.dosm.gov.my>

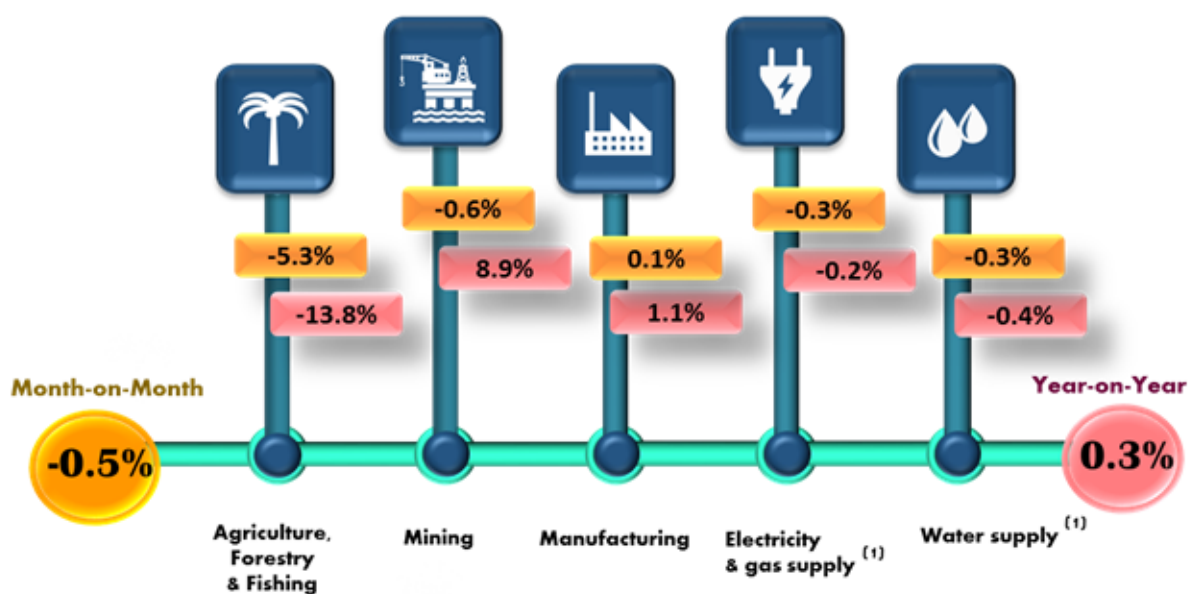


<https://www.facebook.com/StatsMalaysia>
<https://twitter.com/StatsMalaysia>

PPI FOR LOCAL PRODUCTION, DECEMBER 2017

PPI for Local Production **increased 0.3%**
in December 2017 compared to December 2016

Percentage Change By Sector



Note: ⁽¹⁾ The price used in the calculation of the index refers to the net transaction prices for sales of output received by producers

Source: Producer Price Index Local Production (2010=100), December 2017

Producer Price Index (2010=100) by Sector (MSIC 2008)

The Producer Price Index (PPI) for local production rose by 0.3 per cent on a year-on-year basis in December 2017, 4.0 points lower compared to 4.3 per cent in November 2017. Among the sectors which showed increases during this period were Mining (+8.9%), Manufacturing (+1.1%). Meanwhile, the index recorded decreases for sector namely Agriculture, forestry & fishing (-13.8%), Water supply (-0.4%) and Electricity & gas supply (-0.2%).

On a monthly basis, PPI for local production decreased by 0.5 per cent in December 2017. This was due to decreases in four sectors namely Agriculture, forestry & fishing (-5.3%), Mining (-0.6%), Electricity & gas supply and Water supply for both registered a decreased 0.3 per cent. Meanwhile, the index for Manufacturing registered an increase of 0.1 per cent. [Table I].

Table I: Producer Price Index (2010=100) Local Production by Sector (MSIC 2008), Malaysia

Sector	Code	Weights	Index	Percentage Change Month-on-Month			Percentage Change Year-on-Year		
			Dec. 2017	Oct. 2017/ Sept. 2017	Nov. 2017/ Oct. 2017	Dec. 2017/ Nov. 2017	Oct. 2017/ Oct. 2016	Nov. 2017/ Nov. 2016	Dec. 2017/ Dec. 2016
Total		100.0	107.8	▼ -0.6	▲ 0.7	▼ -0.5	▲ 4.7	▲ 4.3	▲ 0.3
Agriculture, Forestry & Fishing	A	8.2	107.2	▼ -1.4	▼ -0.3	▼ -5.3	▲ 4.3	▼ -1.8	▼ -13.8
Mining	B	9.7	97.8	▲ 0.7	▲ 4.6	▼ -0.6	▲ 19.6	▲ 30.7	▲ 8.9
Manufacturing	C	78.8	108.8	▼ -0.6	▲ 0.4	▲ 0.1	▲ 3.6	▲ 2.8	▲ 1.1
Electricity & gas supply	D	3.1	114.5	▼ -0.2	▲ 0.2	▼ -0.3	▲ 0.3	▲ 0.5	▼ -0.2
Water supply	E	0.3	114.1	▲ 0.4	▼ -0.3	▼ -0.3	▼ -0.3	▲ 0.2	▼ -0.4

PPI changes for the period January - December 2017/2016

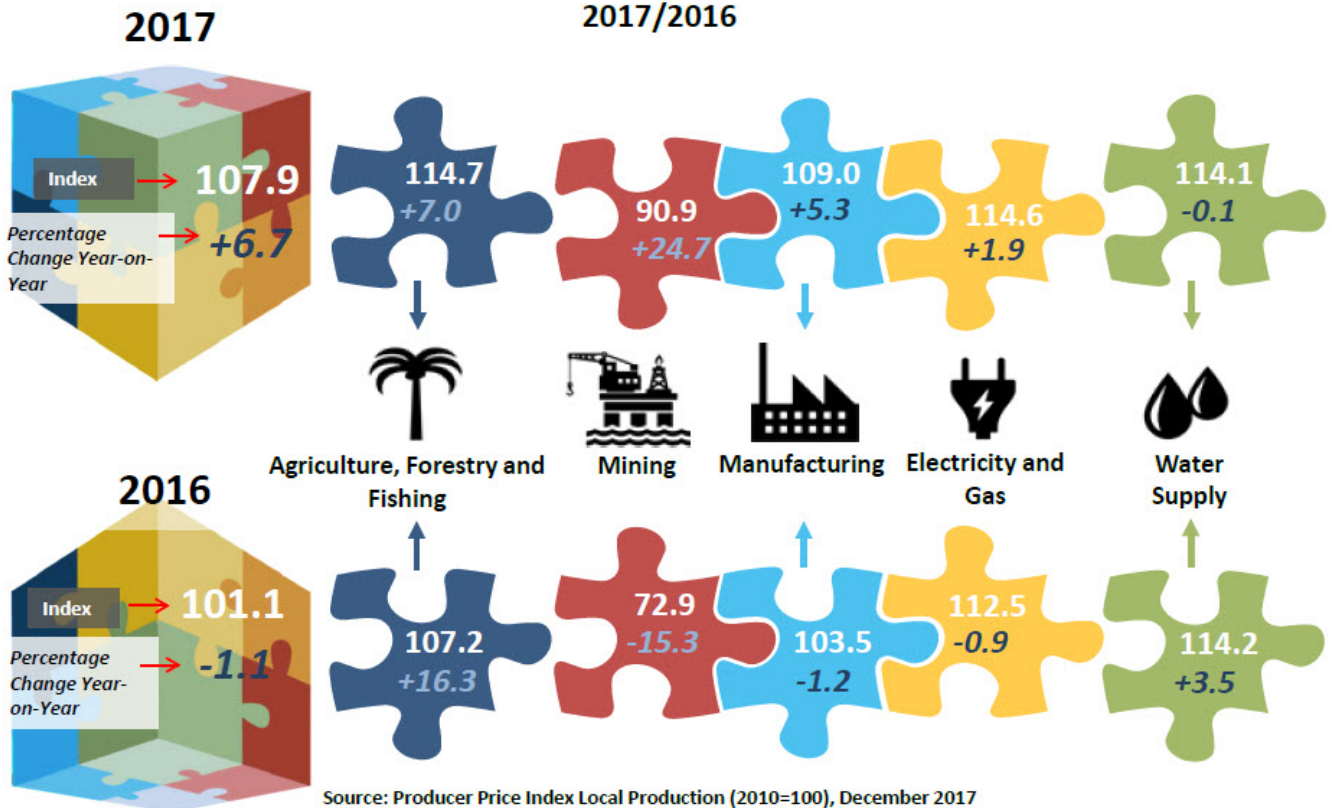


Department of Statistics, Malaysia
<https://www.dosm.gov.my>



<https://www.facebook.com/StatsMalaysia>
<https://twitter.com/StatsMalaysia>

Percentage change of PPI for the period January-December 2017/2016



During January until December 2017, the average PPI for local production increased by 6.7 per cent as compared to the same period in 2016. This was due to the increases in index for four sectors, that is Mining (+24.7%), Agriculture, forestry & fishing (+7.0%), Manufacturing (+5.3%) and Electricity & gas supply (+1.9%). On the other hand, Water supply down 0.1 percent.

Producer Price Index by Stage of Processing

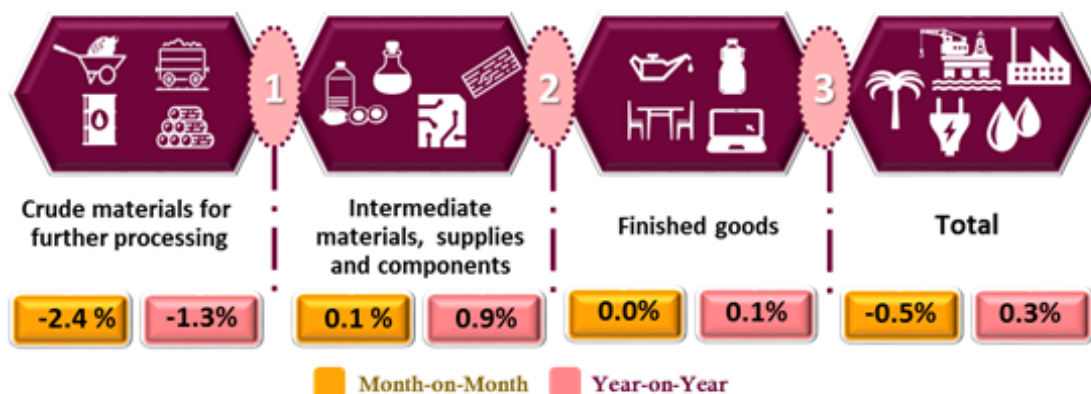


Department of Statistics, Malaysia
<https://www.dosm.gov.my>



<https://www.facebook.com/StatsMalaysia>
<https://twitter.com/StatsMalaysia>

Percentage Change by Stage of Processing, December 2017



Source: Producer Price Index Local Production (2010=100), December 2017

The PPI for local production by stage of processing (SOP) decreased 0.5 per cent in December 2017. This was due to decreases in the indices for Crude materials for further processing (-2.4%) and Finished goods remained unchanged. Meanwhile, Intermediate materials, supplies and components increased by 0.1 per cent.

As compared with the same month a year ago, the PPI for local production by SOP for December 2017 increased 0.3 per cent. The increases were fuelled by the index for Intermediate materials, supplies and components (+0.9%) and Finished goods (+0.1%). However, the index for Crude materials for further processing declined 1.3 percent.

Table II: Producer Price Index (2010=100), Local Production by Stage of Processing

Stage of Processing	Code	Weights	Index	Percentage Change Month-on-Month			Percentage Change Year-on-Year		
			Dec. 2017	Oct. 2017/ Sept. 2017	Nov. 2017/ Oct. 2017	Dec. 2017/ Nov. 2017	Oct. 2017/ Oct. 2016	Nov. 2017/ Nov. 2016	Dec. 2017/ Dec. 2016
Total		100.0	107.8	▼ -0.6	▲ 0.7	▼ -0.5	▲ 4.7	▲ 4.3	▲ 0.3
Crude materials for further processing	1	20.3	110.1	▲ 0.8	▲ 3.2	▼ -2.4	▲ 10.2	▲ 13.6	▼ -1.3
Intermediate materials, supplies and components	2	53.6	109.3	▼ -0.8	◐ 0.0	▲ 0.1	▲ 4.9	▲ 2.8	▲ 0.9
Finished goods	3	26.1	102.9	▼ -0.8	▲ 0.1	◐ 0.0	▲ 0.2	▲ 0.3	▲ 0.1

Released By:

DATO' SRI DR. MOHD UZIR MAHIDIN
CHIEF STATISTICIAN MALAYSIA
DEPARTMENT OF STATISTICS, MALAYSIA

30 January 2018

Contact person:

Ho Mei Kei
Public Relation Officer
Strategic Communication and International Division
Department of Statistics, Malaysia
Tel : +603-8885 7942
Fax : +603-8888 9248
Email : mkho[at]stats.gov.my

Contact person:

Baharudin Mohamad
Public Relation Officer
Strategic Communication and International Division
Department of Statistics Malaysia
Tel : +603-8090 4681
Fax : +603-8888 9248
Email : baharudin[at]dosm.gov.my

Copyright ©2025 Department of Statistics Malaysia Official Portal. All Rights Reserved.