



MINISTRY OF ECONOMY
DEPARTMENT OF STATISTICS MALAYSIA

PRODUCER PRICE INDEX MALAYSIA APRIL 2015

The Producer Price Index (PPI) comprises of indices for local production, imports and domestic economy. The domestic economy price index is a composite index based on the price data derived from the local production and import price indices.

DOMESTIC ECONOMY

Year-on-year comparison showed that the PPI for domestic economy in April 2015 decreased by 5.9 per cent with local production index dropped by 8.8 per cent while the import price index inclined by 0.4 per cent. (Table 1)

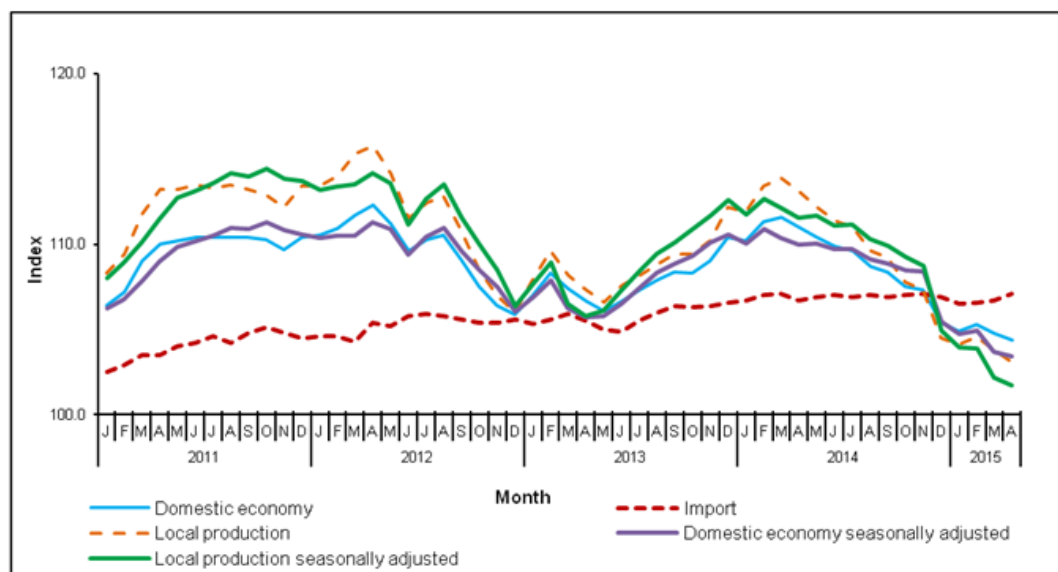
The PPI for domestic economy in April 2015 registered a decrease of 0.4 per cent when compared with the previous month. This was due to the decrease in local production index (-0.7%) while the import price index increased by 0.4 per cent.

In seasonally adjusted terms, the producer price index for domestic economy in April 2015 decreased by 0.3 per cent compared to March 2015.

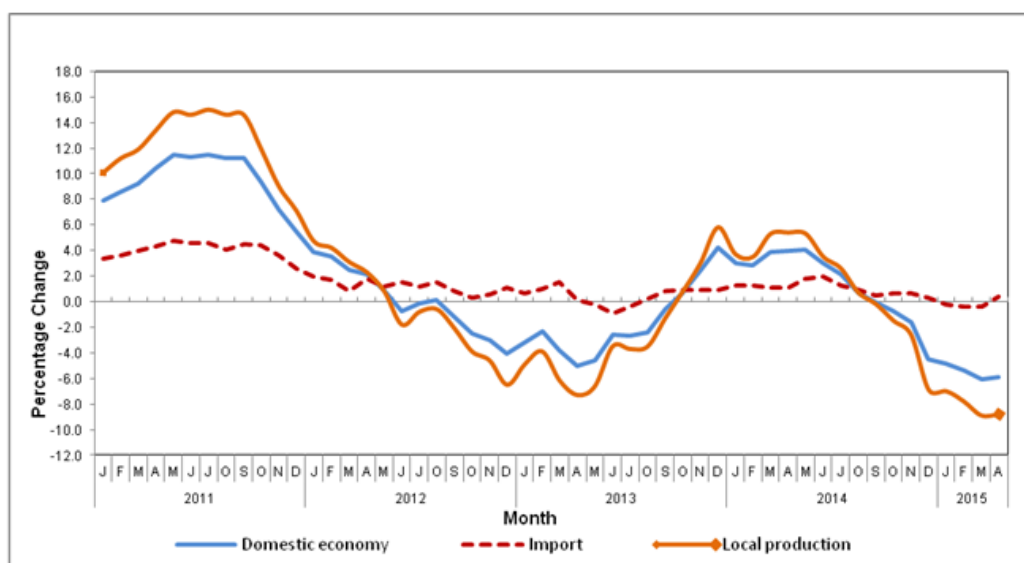
Table 1: Producer Price Index (2010=100), Malaysia

PPI	Index			Percentage change	
	Apr 2014	Mar 2015	Apr 2015	Apr 2015 / Mar 2015	Apr 2015 / Apr 2014
Original Index					
Domestic economy	111.0	104.8	104.4	-0.4	-5.9
- Local production	113.1	103.8	103.1	-0.7	-8.8
- Import	106.7	106.7	107.1	0.4	0.4
Seasonally Adjusted Index					
Domestic economy	110.0	103.7	103.4	-0.3	
- Local production	111.5	102.2	101.7	-0.5	
- Import	106.7	106.7	107.1	0.4	

Graph 1: Producer Price Index (2010=100) – Domestic Economy, Local Production and Imports, 2011-2015



Graph 2: Producer Price Index (2010=100): Domestic Economy, Local Production and Imports, 2011-2015 - Percentage Change (year-on-year)



LOCAL PRODUCTION

Year-on-year comparison revealed that the PPI for local production fell 8.8 per cent in April 2015. The highest drop was recorded by Mining index (-32.2%), followed by Agriculture, forestry & fishing (-9.9%), Manufacturing (-5.2%), Electricity & gas (-5.2%) and Water supply (-0.9%). [Table 2].

The PPI for local production also decreased by 0.7 per cent in April 2015 compared to previous month. This was mainly due to the decreases in Agriculture, forestry & fishing (-3.2%), Electricity & gas (-2.2%) and Manufacturing (-1.2%). However, index for other categories showed increases which constituted of Mining (+6.7%) and Water supply (+0.2%).

PPI for Local Production by Stage of Processing

The PPI for local production by stage of processing (SOP) declined by 0.7 per cent in April 2015 compared to previous month. The decline was due to the decrease in the price of Intermediate materials, supplies and components (-1.9%). However, index for Crude materials for further processing and Finished goods showed increases of 1.9 and 0.1 per cent respectively.

As compared with the same month a year ago, the PPI for local production by SOP for April 2015 dropped by 8.8 per cent. This was due to decreases in Index for Crude materials for further processing (-22.9%), followed by index for Intermediate materials, supplies and components (-7.4%). However, index for Finished goods increased by 0.9 per cent.

Table 2: Producer Price Index (2010=100) - Local Production by category (MSIC 2008) and stage of processing

Category	Code	Weight	Index			Percentage change	
			Apr 2015	Mar 2015	Apr 2015	Apr 2015 / Mar 2015	Apr 2015 / Apr 2014
Total		100.00	113.1	103.8	103.1	-0.7	-8.8
Agriculture, forestry & fishing	A	8.15	102.1	95.0	92.0	-3.2	-9.9
Mining	B	9.67	144.9	92.0	98.2	6.7	-32.2
Manufacturing	C	78.79	110.1	105.7	104.4	-1.2	-5.2
Electricity & gas	D	3.05	120.6	116.9	114.3	-2.2	-5.2
Water supply	E	0.34	109.0	107.8	108.0	0.2	-0.9
PPI by stage of processing		100.00	113.1	103.8	103.1	-0.7	-8.8
Crude materials for further processing	1	20.32	122.1	92.4	94.2	1.9	-22.9
Intermediate materials, supplies and components	2	53.56	115.7	109.2	107.1	-1.9	-7.4
Finished goods	3	26.12	100.9	101.7	101.8	0.1	0.9

IMPORTS

The import price index went up by 0.4 per cent in April 2015 compared to March 2015. The increase in the index was attributed to the higher prices of goods transacted by importers for eight (8) commodity sections as classified under SITC 4+ i.e Miscellaneous transactions and commodities (+1.5%), Chemicals (+0.8%), Machinery and transport equipment (+0.4%), Food (+0.4%), Manufactured goods (+0.2%), Mineral fuels, lubricants etc. (+0.1%), Crude materials, inedible (+0.1%) and Beverages & tobacco (+0.1%). However, decreases were recorded for Animal and vegetable oils and fats (-0.2%) and Miscellaneous manufactured articles (-0.1%). [Table 3]

On a yearly basis, the import price index for April 2015 increased by 0.4 per cent compared to the same month of preceding year. The incline in prices were observed in eight (8) commodity sections which comprises of Miscellaneous transactions and commodities (+4.9%), Machinery and transport equipment (+2.2%), Miscellaneous manufactured articles (+1.2%), Chemicals (+1.0%), Food (+0.8%), Manufactured goods (+0.7%), Crude materials, inedible (+0.6%) and Beverages and tobacco (+0.1%). However, decreases were recorded for Mineral fuels, lubricants etc (-9.7%) and Animal and vegetable oils and fats (-3.7%).

Import Price Index by Stage of Processing

On a monthly basis, the import price index by stage of processing (SOP) for April 2015 increased by 0.4 per cent compared to the previous month. This was due to increases by the index for Intermediate materials

supplies and components (+0.4%), Crude materials for further processing (+0.1%) and Finished goods (+0.1%).

The import price index by SOP for April 2015 inclined by 0.4 per cent compared to April 2014. The increase in the prices was mainly due to the increase in the index for Intermediate materials, supplies and components (+1.4%) and Finished goods (+0.6%). However, indices for Crude materials for further processing decreased by 6.9 per cent.

Table 3: Import price index (2010=100) by commodity section (SITC 4) and stage of processing

Section	Code	Weight	Index			Percentage change	
			Apr 2014	Mar 2015	Apr 2015	Apr 2015 / Mar 2015	Apr 2015 / Apr 2014
Total		100.000	106.7	106.7	107.1	0.4	0.4
Food	0	5.524	115.1	115.5	116.0	0.4	0.8
Beverages and tobacco	1	0.396	102.7	102.7	102.8	0.1	0.1
Crude materials, inedible	2	3.670	100.5	101.0	101.1	0.1	0.6
Mineral fuels, lubricants, etc.	3	10.474	115.6	104.3	104.4	0.1	-9.7
Animal and vegetable oils and fats	4	1.406	102.4	98.8	98.6	-0.2	-3.7
Chemicals	5	8.308	103.7	103.9	104.7	0.8	1.0
Manufactured goods	6	11.455	101.8	102.3	102.5	0.2	0.7
Machinery and transport equipment	7	51.608	106.4	108.3	108.7	0.4	2.2
Miscellaneous manufactured articles	8	5.237	106.1	107.5	107.4	-0.1	1.2
Miscellaneous transactions and commodities	9	1.922	103.4	106.9	108.5	1.5	4.9
<hr/>							
PPI by stage of processing		100.00	106.7	106.7	107.1	0.4	0.4
Crude materials for further processing	1	11.36	108.9	101.3	101.4	0.1	-6.9
Intermediate materials, supplies and components	2	68.16	106.9	108.0	108.4	0.4	1.4
Finished goods	3	20.48	105.2	105.7	105.8	0.1	0.6

Released By:

THE OFFICE OF CHIEF STATISTICIAN MALAYSIA
DEPARTMENT OF STATISTICS, MALAYSIA
 #myHariBulan# #myBulan# #myTahun#

Contact person:
 Norrita binti Amran
 Public Relation Officer
 Corporate and User Services Division
 Department of Statistics, Malaysia
 Tel : +603-8885 7942
 Fax : +603-8888 9248
 Email : norrita.amran@stats.gov.my

Contact person:
 Baharudin Mohamad
 Public Relation Officer
 Strategic Communication and International Division
 Department of Statistics Malaysia
 Tel : +603-8090 4681
 Fax : +603-8888 9248
 Email : baharudin[at]dosm.gov.my

