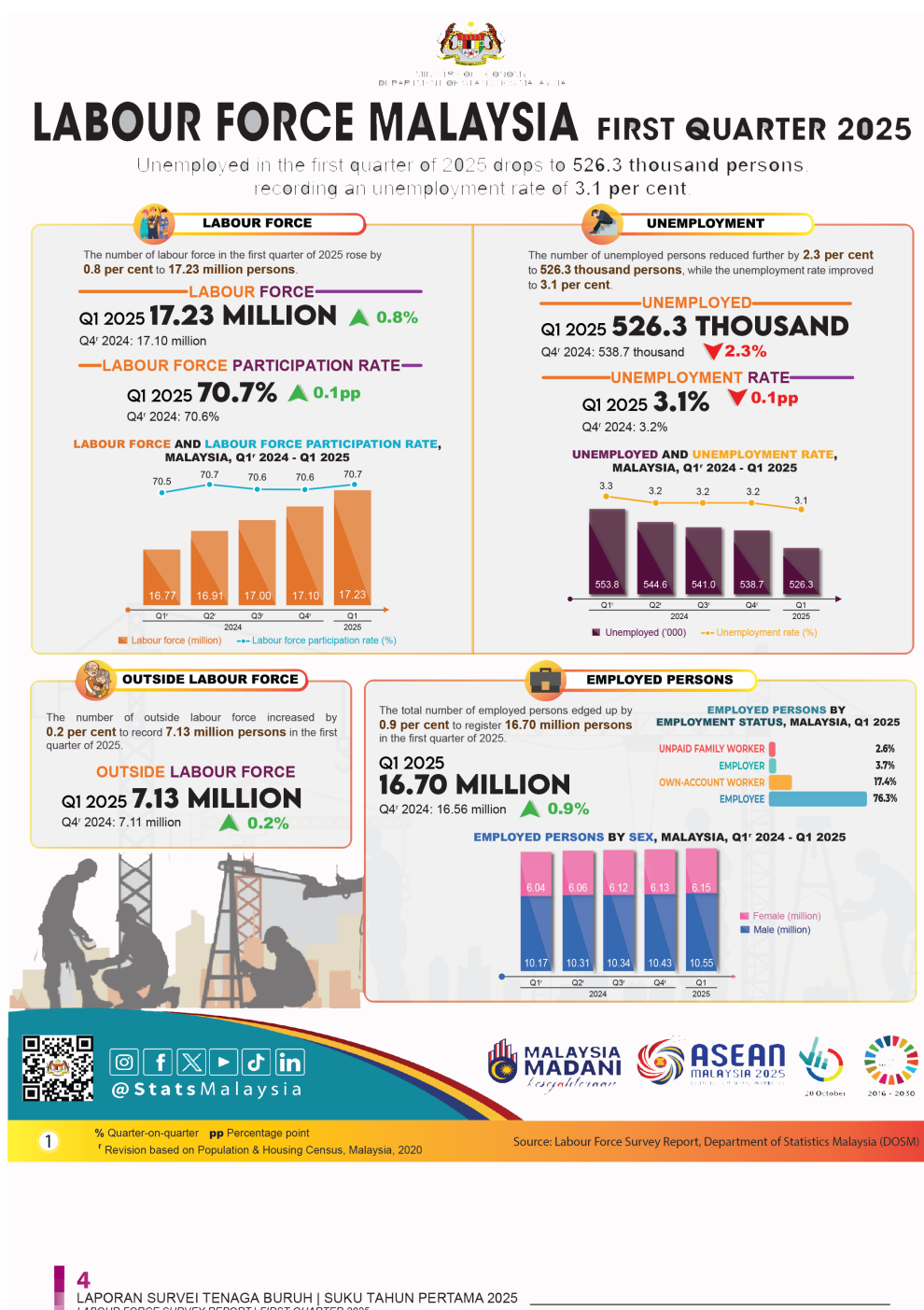




MINISTRY OF ECONOMY
DEPARTMENT OF STATISTICS MALAYSIA

PRINCIPAL STATISTICS OF LABOUR FORCE, MALAYSIA, FIRST QUARTER 2025



- The **labour force** continued to expand in the first quarter of 2025, increased by **0.8 per cent** or **131.4 thousand persons** to register **17.23 million persons** (Q4[r] 2024: 17.10 million persons). A higher **labour force participation rate (LFPR)** was recorded during the quarter at **70.7 per cent**, climbed by **0.1 percentage points** from 70.6 per cent in the preceding quarter.
- The number of **employed persons** posted a quarter-on quarter rose by **0.9 per cent (+143.9 thousand persons)** to **16.70 million persons** in the first quarter of 2025 (Q4[r] 2024: 16.56 million persons). In terms of year-on-year comparison, the number of employed persons experienced growth by **3.0 per cent** or equivalent to **486.2 thousand persons** compared to the first quarter of 2024 (Q1[r] 2024: 16.22 million persons).
- The number of **unemployed persons** continued to drop by **2.3 per cent** or equivalent to a reduction of **12.4 thousand persons** to **526.3 thousand persons** in the first quarter of 2025 (Q4[r] 2024: 538.7 thousand persons). Therefore, the **unemployment rate** during the quarter decline slightly to **3.1 per cent** compared to 3.2 per cent in the previous quarter. Year-on-year comparison showed the unemployment rate also reduced by **0.2 percentage points** corresponding to decline of **27.5 thousand persons** (Q1[r] 2024: 553.8 thousand persons; 3.3%).
- In the first quarter of 2025, the **national labour force participation rate (LFPR)** increased to **70.7 per cent**. Labour participation in the market showed positive performance, with **eight states** recording an increase in LFPR. The highest LFPR was recorded in **Selangor (77.9%)**, followed by **W.P. Putrajaya (77.6%)** and **W.P. Kuala Lumpur (75.4%)**.
- Based on the **unemployment situation by state, ten state** surpassed the **national unemployment rate** at **3.1 per cent**. Furthermore, **twelve states** recorded a decrease in the unemployment rate during the quarter. The lowest unemployment rates were recorded in the states of **W.P. Putrajaya (1.8%)**, **Melaka and Pahang (1.9%)** as well as **Selangor (2.2%)**.

Note: [r] - Revision based on the current population estimates from Population and Housing Census 2020

The full publication of the Labour Force Survey Report, First Quarter 2025 can be downloaded through eStatistic Portal.

Released by:

DEPARTMENT OF STATISTICS MALAYSIA

09 MAY 2025

Contact person:

Baharudin Mohamad

Public Relation Officer

Strategic Communication and International Division

Department of Statistics Malaysia

Tel : +603-8090 4681

Fax : +603-8888 9248

Email : baharudin[at]dosm.gov.my

Copyright ©2026 Department of Statistics Malaysia Official Portal. All Rights Reserved.