



MINISTRY OF ECONOMY  
DEPARTMENT OF STATISTICS MALAYSIA

---

## MONTHLY RUBBER STATISTICS MALAYSIA, SEPTEMBER 2019

---

### **Natural rubber production in September 2019 increased 7.2 per cent**

Malaysia's natural rubber production in September 2019 increased **7.2** per cent as compared to the previous month, from **57,599** tonnes to **61,731** tonnes. For year on year comparison, the production also showed an increase of **28.4** per cent as compared to September 2018.

Exports of Malaysia's natural rubber amounted **48,058** tonnes, decreased by **14.0** per cent against **55,879** tonnes in August 2019. People's Republic of China remains as the main natural rubber export destination with a share of **48.6** per cent from total exports in September 2019 followed by Germany (**9.8%**), Iran (**6.9%**), Finland (**4.6%**) and U.S.A. (**3.5%**).

Stocks of natural rubber was **189,454** tonnes in September 2019 as compared to **182,695** tonnes in August 2019, an increase of **3.7** per cent.

Average price of Latex Concentrate was **438.28** sen per kilogramme in September 2019, decreased by **0.2** per cent. In contrast, the average price of Standard Malaysian Rubber 20 (S.M.R. 20) increased **1.6** per cent to **551.39** sen per kilogramme as compared to August 2019.

Total domestic consumption of natural rubber was **39,264** tonnes, decreased **6.0** per cent against **41,750** tonnes as reported in August 2019. Natural rubber is widely used in the rubber glove industry with **29,459** tonnes or **75.0** per cent of the total domestic consumption.



## MONTHLY RUBBER STATISTICS, SEPTEMBER 2019

### PRODUCTION



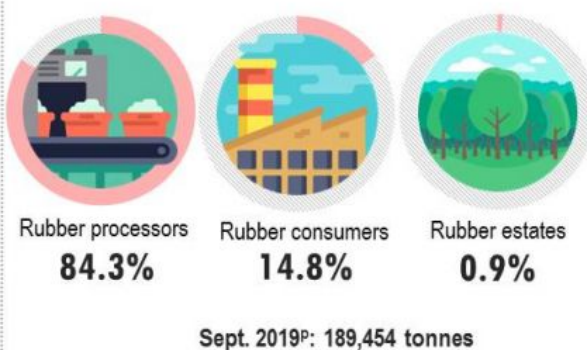
### AVERAGE PRICE



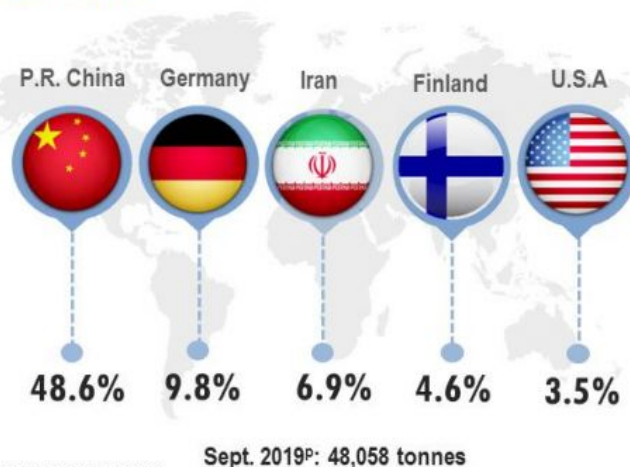
### DOMESTIC CONSUMPTION



### STOCKS



### EXPORTS



p = preliminary

### Production of natural rubber by main producing countries\*, June 2019



Source: Ministry of Primary Industries

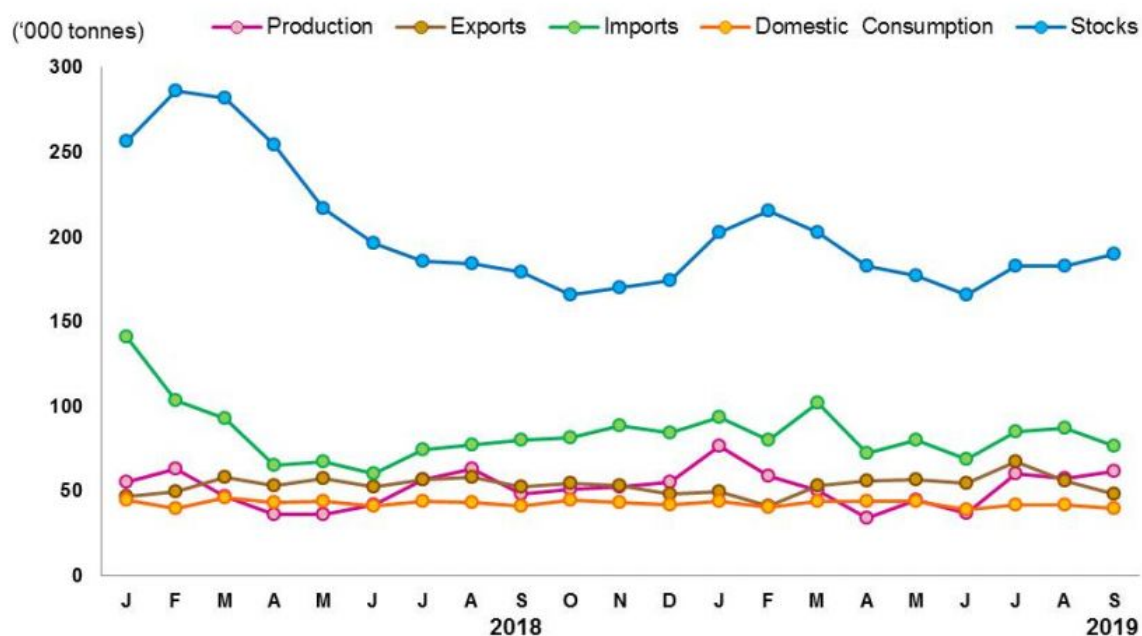
\*Association of Natural Rubber Producing Countries (ANRPC)

Table 1 presents the principal statistics of rubber for September 2019 while Chart 1 shows the monthly time series from September 2018 to September 2019.

**Table 1: Principal statistics of rubber, September 2019**

Principal Statistics	September 2018	August 2019	September 2019	Change month-on-month Sept. 2019/ Aug. 2019 (%)	Change year-on-year Sept. 2019/ Sept. 2018 (%)
Production (tonnes)	48,076	57,599	61,731	7.2	28.4
Exports (tonnes)	52,365	55,879	48,058	-14.0	-8.2
Imports (tonnes)	79,811	86,977	76,578	-12.0	-4.1
Domestic consumption (tonnes)	41,188	41,750	39,264	-6.0	-4.7
Closing stocks (tonnes)	179,351	182,695	189,454	3.7	5.6
Number of paid workers (estate)	11,804	11,086	11,040	-0.4	-6.5
Salaries & wages (estate) (RM'000)	16,111	18,170	18,216	0.3	13.1

**Chart 1: Monthly production, exports, imports, domestic consumption and stocks of natural rubber 2018/2019**



\*Notes:

Data for September 2019 is **provisional**. The data will be updated based on the latest available figures and subsequently published in the October 2019 publication.

**Released By:**

**DATO' SRI DR. MOHD UZIR MAHIDIN**  
**CHIEF STATISTICIAN MALAYSIA**  
**DEPARTMENT OF STATISTICS, MALAYSIA**

 DrUzir\_Mahidin   Dr\_Uzir

**#myHariBulan# #myBulan# #myTahun#**

**Contact person:**

Rohaida binti Mohamad  
Public Relation Officer  
Strategic Communication and International Division  
Department of Statistics, Malaysia  
**Tel** : +603-8885 7942  
**Fax** : +603-8888 9248  
**Email** : rohaida.mohamad[at]dosm.gov.my

**Contact person:**

Baharudin Mohamad  
Public Relation Officer  
Strategic Communication and International Division  
Department of Statistics Malaysia  
**Tel** : +603-8090 4681  
**Fax** : +603-8888 9248  
**Email** : baharudin[at]dosm.gov.my

**Copyright ©2025 Department of Statistics Malaysia Official Portal. All Rights Reserved.**