



MINISTRY OF ECONOMY
DEPARTMENT OF STATISTICS MALAYSIA

MONTHLY RUBBER STATISTICS MALAYSIA, SEPTEMBER 2016

Natural Rubber (NR) production fell by 3.2 per cent in September 2016

Natural rubber (NR) production decreased by **3.2** per cent in September 2016 to **57,751** tonnes as compared to August 2016. The main contributor to NR production is from the smallholding sector at **91.2** per cent.

Average monthly price of Latex Concentrate was **456.13** sen per kilogramme, rose by **17.15** sen per kilogramme from August 2016. Meanwhile, Standard Malaysian Rubber 20 went up by **35.98** sen per kilogramme to **550.98** sen per kilogramme.

Exports of NR in September 2016 recorded at **55,036** tonnes, **18.2** per cent higher than the previous month. Five main destinations of NR exports were China, Germany, Iran, U.S.A. and Finland.

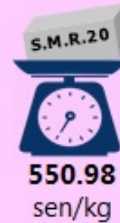
Domestic consumption of NR declined by **4.3** per cent to **38,760** tonnes over the same period. Rubber gloves industry remain as main domestic consumption of **73.6** per cent.

Level of NR stocks at the end of September 2016 reduced by **2.3** per cent to **165,246** tonnes.

Natural Rubber (NR) production fell by 3.2 per cent in September 2016



The smallholding sector dominates the production of natural rubber with a contribution of **91.2%**.

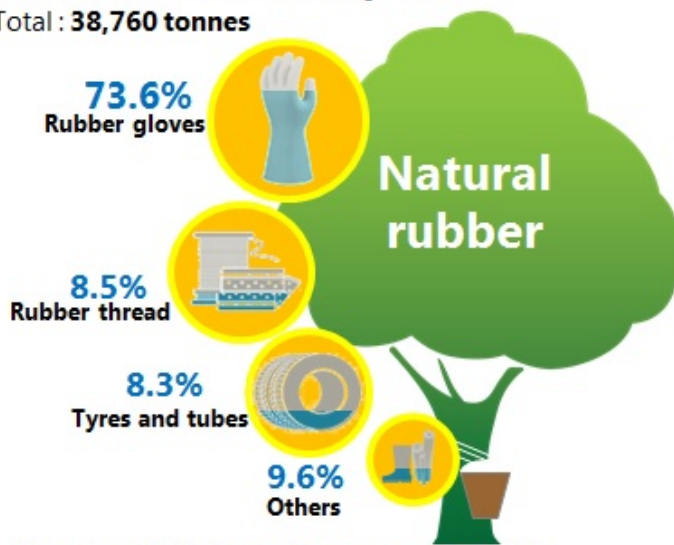


Average price
Latex Concentrate: 3.9%
S.M.R.20: 7.0%



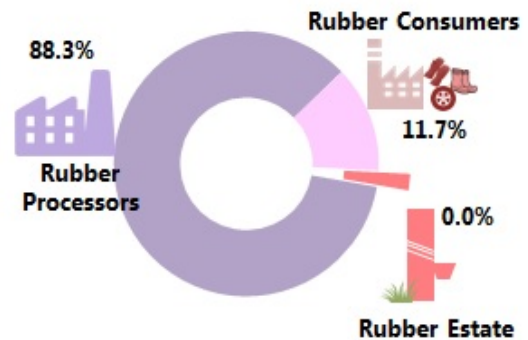
Domestic Consumption

Total: **38,760 tonnes**



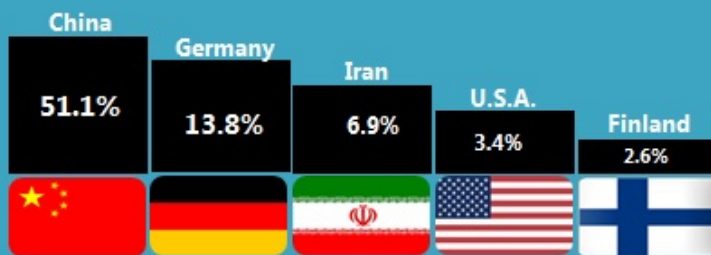
More than 70% domestic consumption of NR from the rubber gloves industry.

Stocks



Sept. 2016: **165,246 tonnes**
August 2016: **169,100 tonnes**

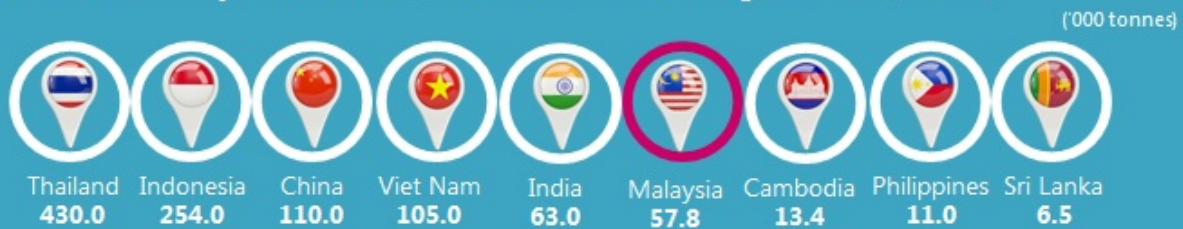
Exports



Exports of NR increased by **18.2%** as compared to August 2016.
The main destination of NR exports was China.

Total exports: **55,036 tonnes**

Production of NR by Association of Natural Rubber Producing Countries (ANRPC)



Source: Ministry of Plantation Industries and Commodities

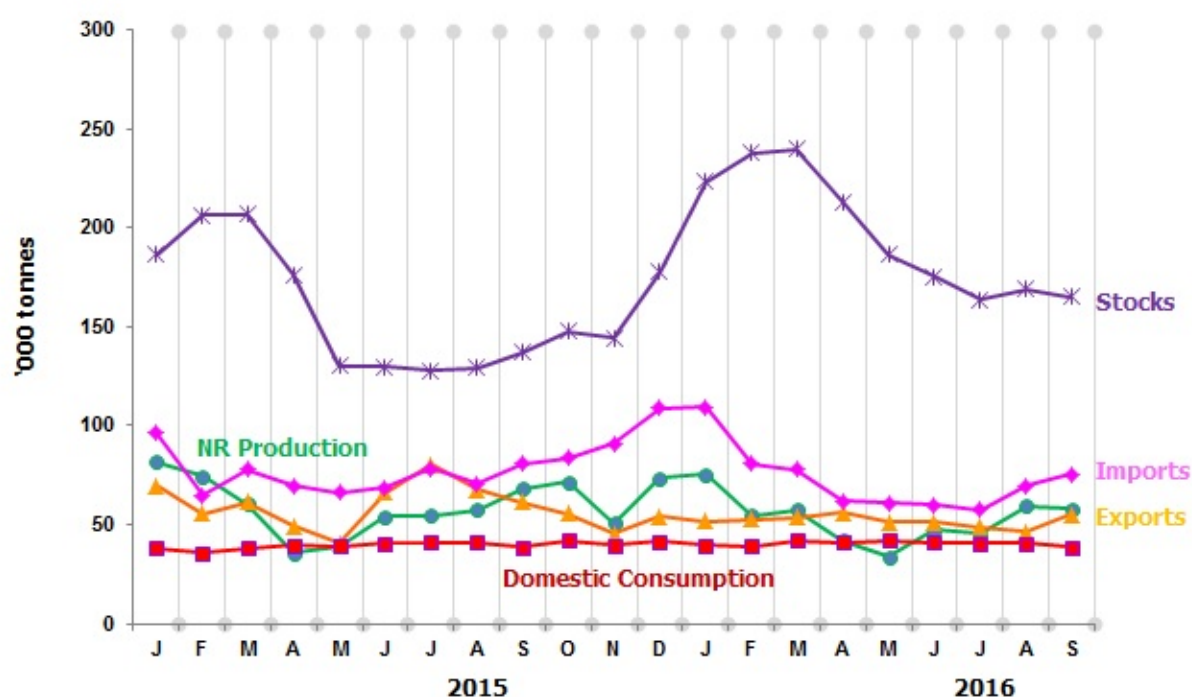
Source: Monthly Rubber Statistics Malaysia, September 2016, Department of Statistics, Malaysia

Table 1 presents the principal statistics of rubber for September 2016 while Chart 1 shows the monthly time series.

Table 1: Principal Statistics of rubber, September 2016

Principal Statistics	September 2016	August 2016	September 2015	Change month-on-month (%)	Change year-on-year (%)
Production (tonnes)	57,751	59,673	68,260	-3.2	-15.4
Exports (tonnes)	55,036	46,548	61,231	18.2	-10.1
Imports (tonnes)	75,661	69,928	80,865	8.2	-6.4
Domestic consumption (tonnes)	38,760	40,522	38,679	-4.3	0.2
Closing stocks (tonnes)	165,246	169,100	137,176	-2.3	20.5
Number of paid workers (estate)	10,365	10,671	11,936	-2.9	-13.2
Salaries & wages (RM'000) (estate)	13,970	15,595	15,608	-10.4	-10.5

Chart 1: Monthly production, exports, imports, domestic consumption and stocks of natural rubber 2015/2016



*Notes:

Data for September 2016 is **provisional**. The data will be updated based on the latest available figures and subsequently published in the October 2016 publication.

Released By:

**THE OFFICE OF CHIEF STATISTICIAN MALAYSIA
DEPARTMENT OF STATISTICS, MALAYSIA
#myHariBulan# #myBulan# #myTahun#**

Contact person:

Ho Mei Kei
Public Relation Officer
Corporate and User Services Division
Department of Statistics, Malaysia
Tel : +603-8885 7942
Fax : +603-8888 9248
Email : mkho[at]stats.gov.my

Contact person:

Baharudin Mohamad
Public Relation Officer
Strategic Communication and International Division
Department of Statistics Malaysia
Tel : +603-8090 4681
Fax : +603-8888 9248
Email : baharudin[at]dosm.gov.my

Copyright ©2025 Department of Statistics Malaysia Official Portal. All Rights Reserved.