



MINISTRY OF ECONOMY
DEPARTMENT OF STATISTICS MALAYSIA

MONTHLY RUBBER STATISTICS MALAYSIA, JUNE 2017

Production of natural rubber increased 15.1 per cent in June 2017

Natural rubber production in June 2017 was **50,614** tonnes, an increase of **15.1** per cent compared to **43,962** tonnes in the previous month. Smallholding sector was a major contributor to the production of natural rubber with a contribution exceeding **90** per cent.

Average monthly price of Latex Concentrate was **573.08** sen per kilogramme, decreased by **9.1** per cent from **630.52** sen per kilogramme in May 2017. Standard Malaysian Rubber 20 also showed a decrease of **7.3** per cent to **602.71** sen per kilogramme compared to **650.05** sen per kilogramme in the previous month.

Exports of natural rubber declined by **10.9** per cent from **50,126** tonnes to **44,683** tonnes in June 2017. Five main destinations of natural rubber exports were China, Germany, Taiwan, USA and Iran.

Domestic consumption of natural rubber dropped **4.4** per cent from **40,965** tonnes to **39,183** tonnes within the same period. Rubber gloves industry remains as the main domestic consumer with consumption of more than **70** per cent.

Stocks of natural rubber at the end of June 2017 was **198,994** tonnes against **208,200** tonnes in May 2017 with a decrease of **4.4** per cent.

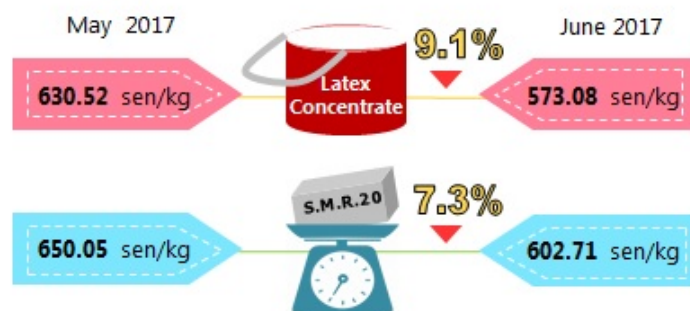


Production of natural rubber increased 15.1 per cent in June 2017

Natural rubber production is dominated by smallholding sector with contribution exceeding 90%.



Average price



Domestic Consumption

Total : 39,183 tonnes

Rubber gloves industry is the main domestic consumer with consumption of more than 70%.



Rubber
Gloves
74.0%



Rubber
Thread
9.9%



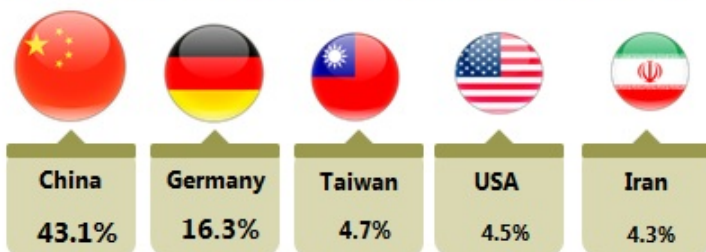
Tyres and
Tubes
7.3%



Others
8.9%

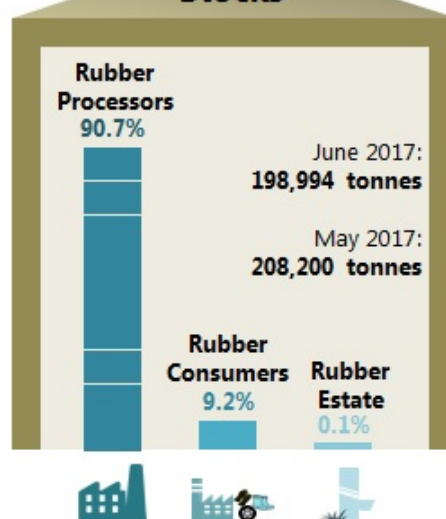
Exports

Exports of natural rubber decreased by 10.9% as compared to May 2017. The main destination of natural rubber exports was China.

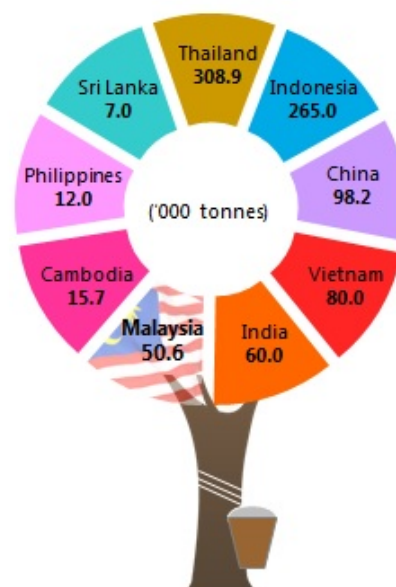


Total exports : 44,683 tonnes

Stocks



Production of Natural Rubber by Association of Natural Rubber Producing Countries (ANRPC), June 2017



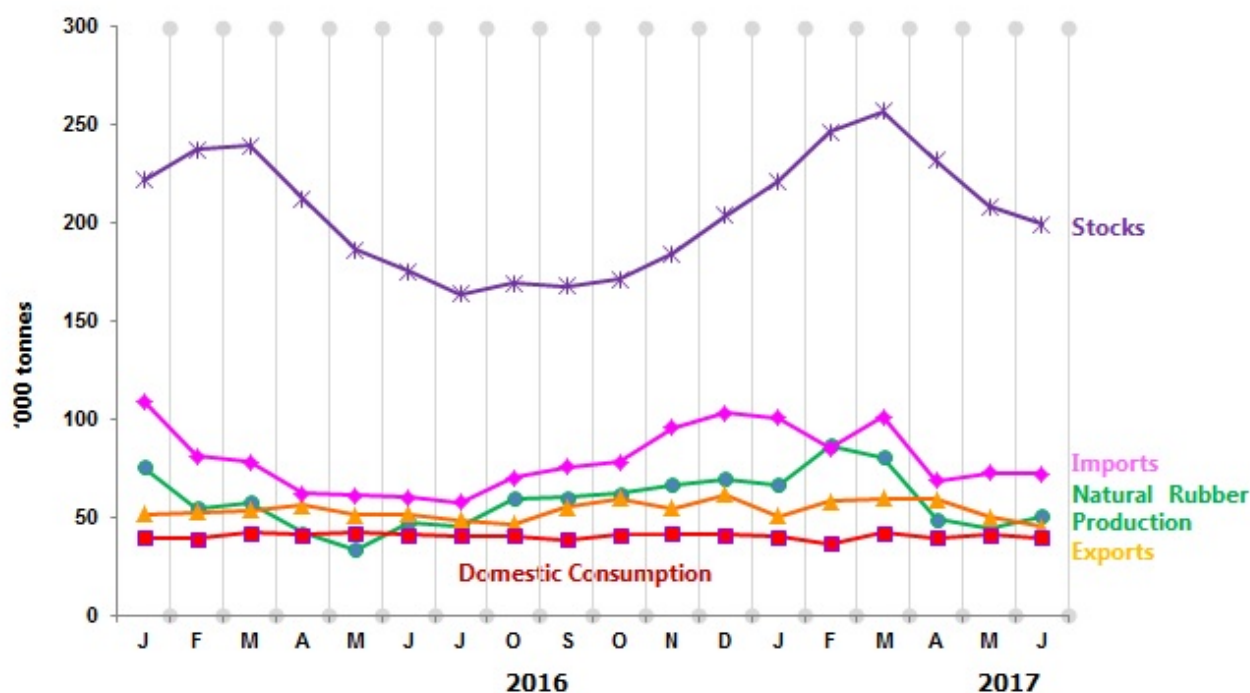
Source: Ministry of Plantation Industries and Commodities

Table 1 presents the principal statistics of rubber for June 2017 while Chart 1 shows the monthly time series from June 2016 to June 2017.

Table 1: Principal statistics of rubber, June 2017

Principal Statistics	June 2017	May 2017	June 2016	Change month-on-month (%)	Change year-on-year (%)
Production (tonnes)	50,614	43,962	47,188	15.1	7.3
Exports (tonnes)	44,683	50,126	51,328	-10.9	-12.9
Imports (tonnes)	72,173	72,500	60,038	-0.5	20.2
Domestic consumption (tonnes)	39,183	40,965	40,861	-4.4	-4.1
Closing stocks (tonnes)	198,994	208,200	175,205	-4.4	13.6
Number of paid workers (estate)	9,687	9,725	10,895	-0.4	-11.1
Salaries & wages (RM'000) (estate)	11,793	12,362	13,243	-4.6	-10.9

Chart 1: Monthly production, exports, imports, domestic consumption and stocks of natural rubber 2016/2017



*Notes:

Data for June 2017 is **provisional**. The data will be updated based on the latest available figures and subsequently published in the July 2017 publication.

Released By:

**THE OFFICE OF CHIEF STATISTICIAN MALAYSIA
DEPARTMENT OF STATISTICS, MALAYSIA
#myHariBulan# #myBulan# #myTahun#**

Contact person:

Ho Mei Kei
Public Relation Officer
Corporate and User Services Division
Department of Statistics, Malaysia
Tel : +603-8885 7942
Fax : +603-8888 9248
Email : mkho[at]stats.gov.my

Contact person:

Baharudin Mohamad
Public Relation Officer
Strategic Communication and International Division
Department of Statistics Malaysia
Tel : +603-8090 4681
Fax : +603-8888 9248
Email : baharudin[at]dosm.gov.my

Copyright ©2025 Department of Statistics Malaysia Official Portal. All Rights Reserved.