



MINISTRY OF ECONOMY  
DEPARTMENT OF STATISTICS MALAYSIA

---

## MONTHLY RUBBER STATISTICS MALAYSIA, JANUARY 2019

---

### **Natural rubber surged 35.6 per cent in January 2019**

Malaysia's natural rubber production in January 2019 was **74,638** tonnes, an increase of **35.6** per cent as compared with **55,037** tonnes in December 2018. Comparison with January 2018 showed the production of natural rubber also increased **35.6** per cent.

Malaysia's natural rubber exports amounted to **49,797** tonnes, increased **3.3** per cent against **48,183** tonnes in December 2018. China is the main destination of exported natural rubber, **39.4** per cent of the total exports in January 2019 followed by Germany (**16.3%**), Iran (**5.9%**), Finland (**4.9%**) and U.S.A (**4.5%**).

Stocks of natural rubber recorded at the end of January 2019 rose **14.4** per cent from **174,004** tonnes in December 2018 to **199,070** tonnes.

Average price of Latex Concentrate in January 2019 was **393.29** sen per kilogramme, gained by **4.3** per cent whereas the average price of Standard Malaysian Rubber 20 (S.M.R.20) increased **5.8** per cent to **548.48** sen per kilogramme as compared to the average price in December 2018.

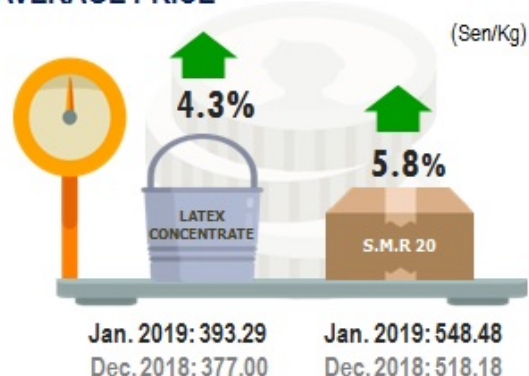
Total domestic consumption of natural rubber in January 2019 was **43,452** tonnes, an increase of **3.9** per cent against **41,833** tonnes as reported in December 2018. Natural rubber is widely used in the manufacturing of rubber glove industry with a consumption of **32,386** tonnes or **74.5** per cent of the total domestic consumption.



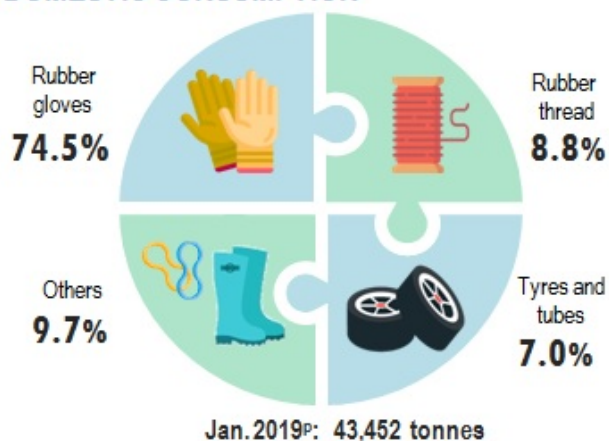
## PRODUCTION



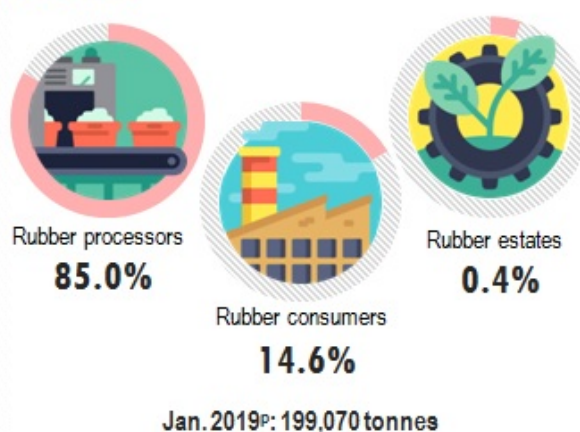
## AVERAGE PRICE



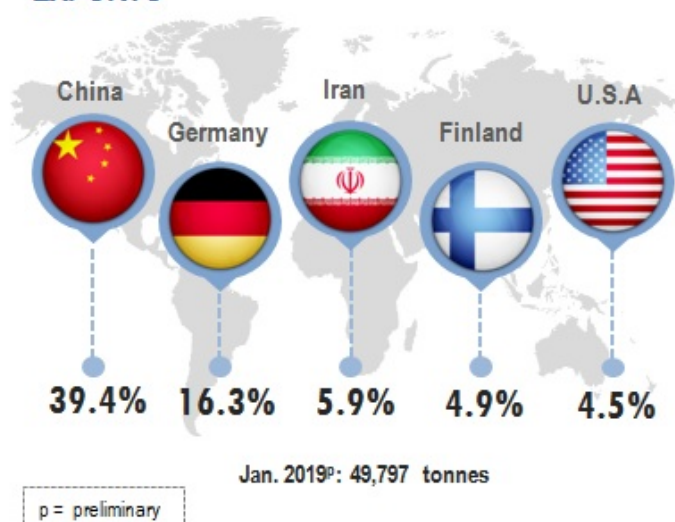
## DOMESTIC CONSUMPTION



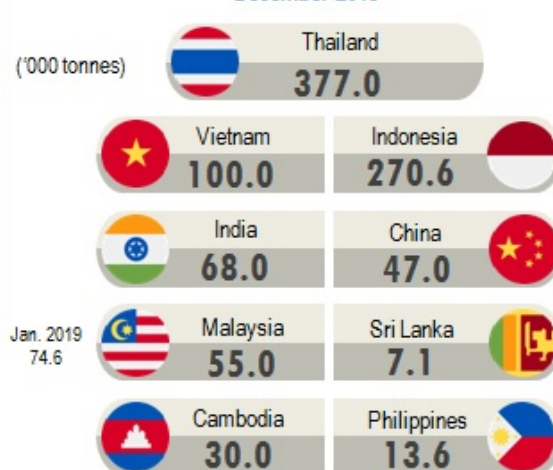
## STOCKS



## EXPORTS



## Production of natural rubber by main producing countries\*, December 2018



Source: Ministry of Primary Industries

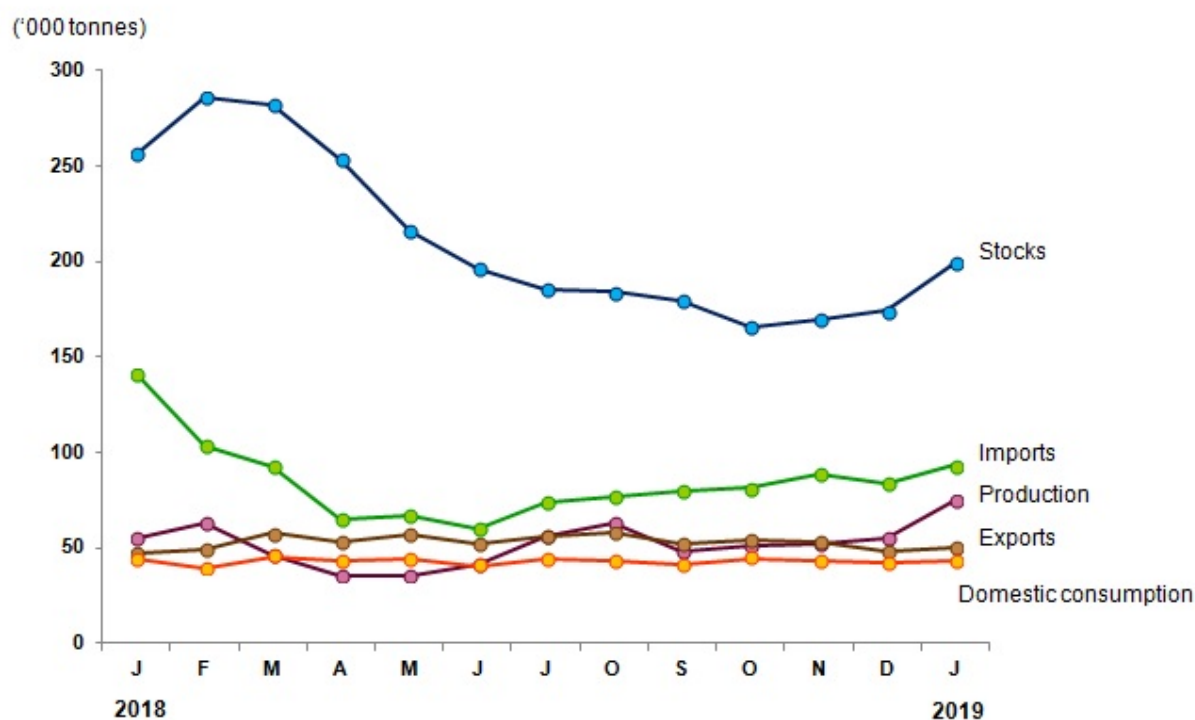
\*Association of Natural Rubber Producing Countries (ANRPC)

Table 1 presents the principal statistics of rubber for January 2019 while Chart 1 shows the monthly time series from January 2018 to January 2019.

**Table 1: Principal statistics of rubber, January 2019**

Principal Statistics	January 2018	December 2018	January 2019	Change month-on-month December 2018/ January 2019 (%)	Change year-on-year January 2018/ January 2019 (%)
Production (tonnes)	55,039	55,037	74,638	35.6	35.6
Exports (tonnes)	46,928	48,183	49,797	3.3	6.1
Imports (tonnes)	140,670	84,035	93,127	10.8	-33.8
Domestic consumption (tonnes)	44,235	41,833	43,452	3.9	-1.8
Closing stocks (tonnes)	256,432	174,004	199,070	14.4	-22.4
Number of paid workers (estate)	10,708	11,481	11,549	0.6	7.9
Salaries & wages (estate) (RM'000)	14,422	18,858	19,232	2.0	33.4

**Chart 1: Monthly production, exports, imports, domestic consumption and stocks of natural rubber 2018/2019**



\*Notes:

Data for January 2019 is **provisional**. The data will be updated based on the latest available figures and subsequently published in the February 2019 publication.

**Released By:**

**DATO' SRI DR. MOHD UZIR MAHIDIN**  
**CHIEF STATISTICIAN MALAYSIA**  
**DEPARTMENT OF STATISTICS, MALAYSIA**

 [DrUzir\\_Mahidin](#)  [Dr\\_Uzir](#) 

**#myHariBulan# #myBulan# #myTahun#**

**Contact person:**

Ho Mei Kei  
Public Relation Officer  
Strategic Communication and International Division  
Department of Statistics, Malaysia  
**Tel** : +603-8885 7942  
**Fax** : +603-8888 9248  
**Email** : mkho[at]dosm.gov.my

**Contact person:**

Baharudin Mohamad  
Public Relation Officer  
Strategic Communication and International Division  
Department of Statistics Malaysia  
**Tel** : +603-8090 4681  
**Fax** : +603-8888 9248  
**Email** : baharudin[at]dosm.gov.my

**Copyright ©2025 Department of Statistics Malaysia Official Portal. All Rights Reserved.**