



MINISTRY OF ECONOMY  
DEPARTMENT OF STATISTICS MALAYSIA

---

## MONTHLY RUBBER STATISTICS MALAYSIA, FEBRUARY 2019

---

### **Natural rubber in February 2019 shrank by 22.5 per cent**

Malaysia's natural rubber production in February 2019 was **59,017** tonnes, a decrease of **6.7** per cent as compared to February 2018. Month-on-month comparison showed the production of natural rubber declined by **22.5** per cent from **76,104** tonnes in January 2019.

Malaysia's natural rubber exports amounted to **41,102** tonnes, decreased **17.5** per cent against **49,797** tonnes in January 2019. China is the main destination of exported natural rubber, **42.6** per cent of the total exports in February 2019 followed by Germany (**11.3** %), U.S.A (**6.3**%), Iran (**5.0**%) and Finland (**3.9**%).

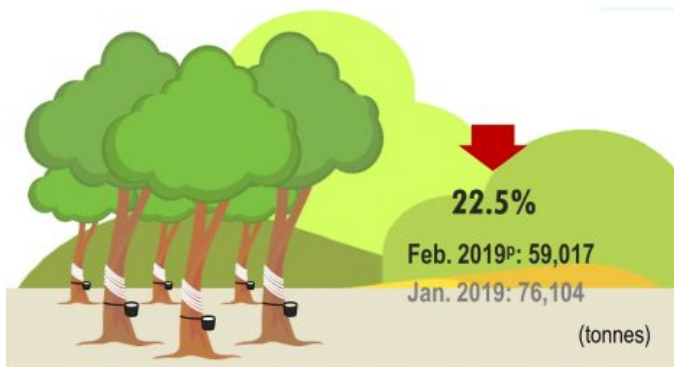
Stocks of natural rubber recorded at the end of February 2019 rose **6.1** per cent from **202,427** tonnes in January 2019 to **214,773** tonnes.

Average price of Latex Concentrate in February 2019 was **410.50** sen per kilogramme, gained by **4.4** per cent whereas the average price of Standard Malaysian Rubber 20 (S.M.R.20) also increased **1.8** per cent to **558.09** sen per kilogramme as compared to the average price in January 2019.

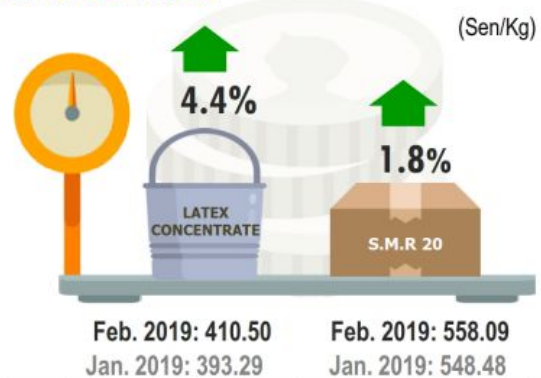
Total domestic consumption of natural rubber in February 2019 was **39,835** tonnes, a decrease of **9.8** per cent against **44,140** tonnes as reported in January 2019. Natural rubber is widely used in the manufacturing of rubber glove industry with a consumption of **29,952** tonnes or **75.2** per cent of the total domestic consumption.



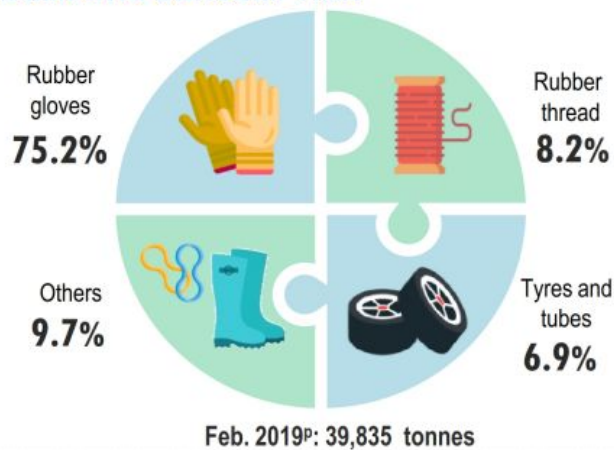
## PRODUCTION



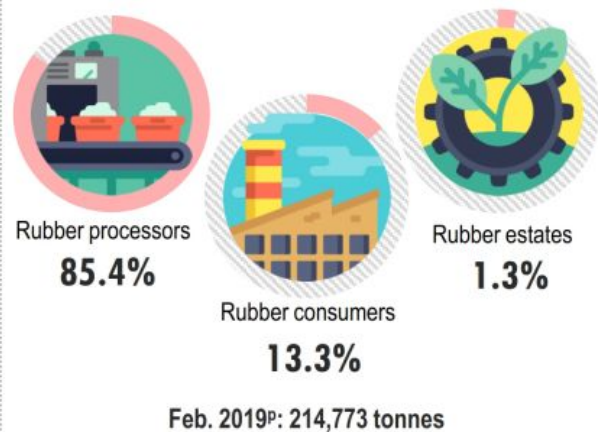
## AVERAGE PRICE



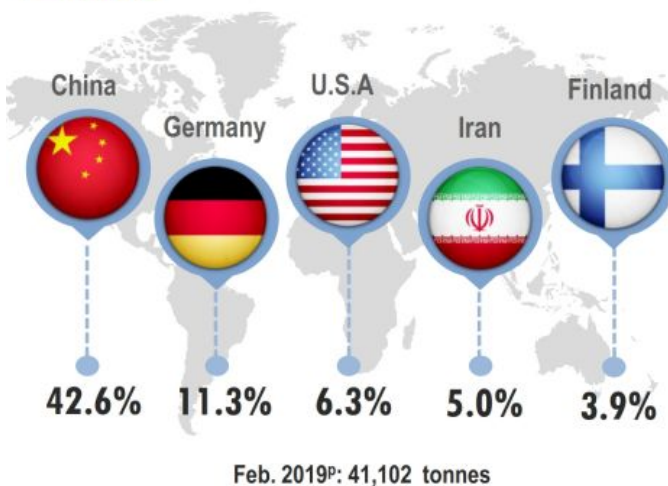
## DOMESTIC CONSUMPTION



## STOCKS



## EXPORTS



p = preliminary

## Production of natural rubber by main producing countries\*, January 2019



Source: Ministry of Primary Industries

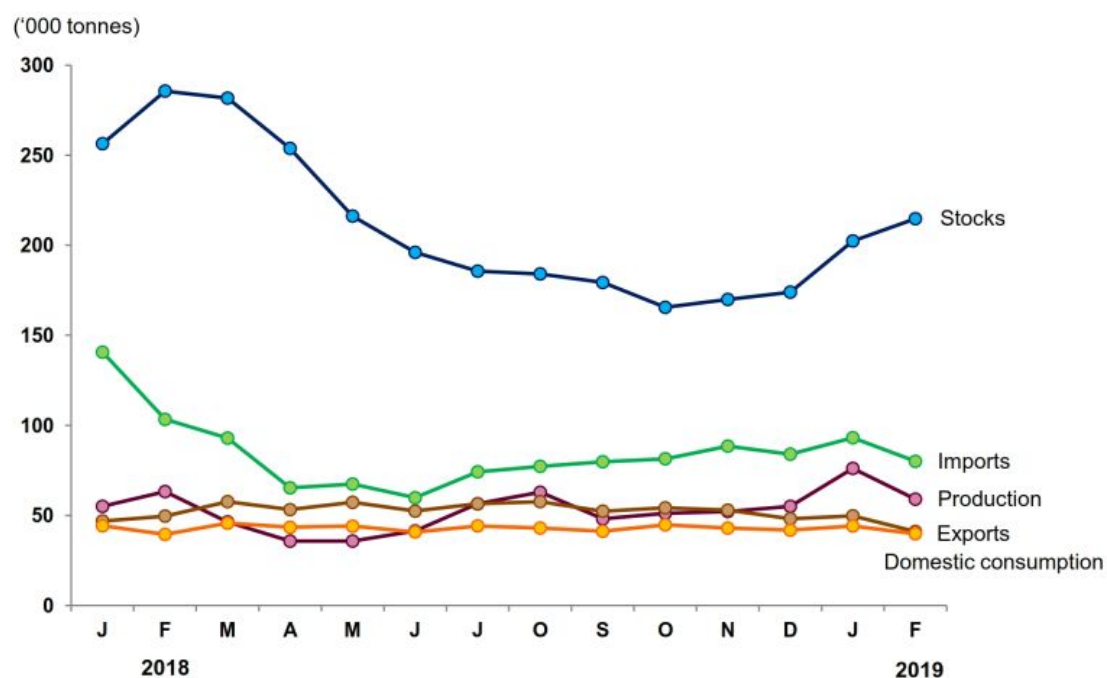
\*Association of Natural Rubber Producing Countries (ANRPC)

Table 1 presents the principal statistics of rubber for February 2019 while Chart 1 shows the monthly time series from February 2018 to February 2019.

**Table 1: Principal statistics of rubber, February 2019**

Principal Statistics	February 2018	January 2019	February 2019	Change month-on-month February 2019/ January 2019 (%)	Change year-on-year February 2019/ February 2018 (%)
Production (tonnes)	63,246	76,104	59,017	-22.5	-6.7
Exports (tonnes)	49,627	49,797	41,102	-17.5	-17.2
Imports (tonnes)	103,338	93,127	80,047	-14.0	-22.5
Domestic consumption (tonnes)	39,448	44,140	39,835	-9.8	1.0
Closing stocks (tonnes)	285,671	202,427	214,773	6.1	-24.8
Number of paid workers (estate)	10,464	11,874	11,766	-0.9	12.4
Salaries & wages (estate) (RM'000)	15,186	19,708	16,997	-13.8	11.9

**Chart 1: Monthly production, exports, imports, domestic consumption and stocks of natural rubber 2018/2019**



\*Notes:

Data for February 2019 is **provisional**. The data will be updated based on the latest available figures and subsequently published in the March 2019 publication.

**Released By:**

**DATO' SRI DR. MOHD UZIR MAHIDIN**  
**CHIEF STATISTICIAN MALAYSIA**  
**DEPARTMENT OF STATISTICS, MALAYSIA**

 [DrUzir\\_Mahidin](#)  [Dr\\_Uzir](#) 

**#myHariBulan# #myBulan# #myTahun#**

**Contact person:**

Public Relation Officer  
Strategic Communication and International Division  
Department of Statistics, Malaysia  
**Tel** : +603-8885 7187 / 7942  
**Fax** : +603-8888 9248  
**Email** : jpbkcp[at]dosm.gov.my

**Contact person:**

Baharudin Mohamad  
Public Relation Officer  
Strategic Communication and International Division  
Department of Statistics Malaysia  
Tel : +603-8090 4681  
Fax : +603-8888 9248  
Email : baharudin[at]dosm.gov.my

**Copyright ©2025 Department of Statistics Malaysia Official Portal. All Rights Reserved.**