



MINISTRY OF ECONOMY
DEPARTMENT OF STATISTICS MALAYSIA

MONTHLY RUBBER STATISTICS MALAYSIA, FEBRUARY 2015

1. PRODUCTION

Production of natural rubber (NR) in February 2015 was recorded at **74,469** tonnes, decreased by **7,285** tonnes (**-8.9%**) from January 2015. Year-on-year comparison showed an increase of **1,041** tonnes (**+1.4%**). The smallholding sector contributes **92.6** per cent of the total NR production while the remaining is from the estate sector. Month-on-month, both of smallholding and estate sectors recorded a decrease in production at **9.2** per cent and **4.7** per cent respectively.

2. EXPORTS

Total exports of NR in February 2015 was **55,805** tonnes, dropped by **13,660** tonnes (**-19.7%**) from the previous month. The total exports also decreased by **25.0** per cent compared to February 2014. Standard Malaysian Rubber (S.M.R.) contributes 94.1 per cent from the total exports in which **59.1** per cent comprised of S.M.R. 20.

The main destination for exports of NR is to People's Rep. of China (**44.6%**), followed by Germany (**14.4%**), U.S.A. (**7.1%**), Islamic Rep. of Iran (**4.6%**), Brazil (**4.1%**), Finland (**3.1%**), Rep. of Korea (**2.9%**), Turkey (**1.9%**) and Portugal (**1.7%**). The total exports to these countries accounted for **84.4** per cent of the overall NR exports.

3. IMPORTS

A total of **64,944** tonnes of NR was imported in February 2015, dropped by **31,187** tonnes (**-32.4%**) from January 2015. Imports increased by **2.5** per cent when compared to a year ago. Latex Concentrate and Standard Rubber were the main type of NR imported, at **36.6** per cent and **30.7** per cent respectively.

Thailand and Viet Nam were the main supplier of NR at **60.1** per cent and **18.1** per cent respectively. These two countries accounted for **78.2** per cent of the total imports of NR.

4. DOMESTIC CONSUMPTION

In February 2015, the total domestic consumption of NR reduced by **3,804** tonnes (**-10.0%**) as compared to the previous month with total of **34,214** tonnes. However, the domestic consumption of NR increased by **960** tonnes (**+2.9%**) from a year ago.

The largest NR consumer was from rubber gloves industry at **25,316** tonnes (**74.0%**), followed by rubber thread (**9.2%**) and tyre & tubes (**7.0%**). These three industries together consumed **30,859** tonnes (**90.2%**) of this month's total NR.

5. STOCKS

The level of stocks in February 2015 was recorded at **206,388** tonnes. The stocks showed an increase of **19,343** tonnes (**+10.3%**) when compared to month-on-month. Nevertheless, the level of NR stocks decreased by **17,261** tonnes (**-7.7%**) when compared to the level of stocks a year ago.

6. AVERAGE MONTHLY PRICE PER KILOGRAMME (Noon Quotations - F.O.B.)

In February 2015, the average price of latex concentrate was recorded at **383.33** sen increased by **6.64** sen (**+1.8%**) from the previous month whereas for year-on-year, the average price of latex concentrate dropped by **84.78** sen (**-18.1%**).

The average monthly price of S.M.R. 20 was recorded at **499.80** sen in February 2015, dropped by **3.84** sen (**-0.8%**) for month-on-month and **123.52** sen (**-19.8%**) for year-on-year.

7. EMPLOYMENT

In February 2015, the total employment engaged in the rubber estates were **12,270** persons. From the total, **12,266** were paid employees with salaries & wages paid amounted **RM15.2** million. The number of paid employees increased by **0.0** per cent from the previous month but dropped by **1.9** per cent from the previous year.

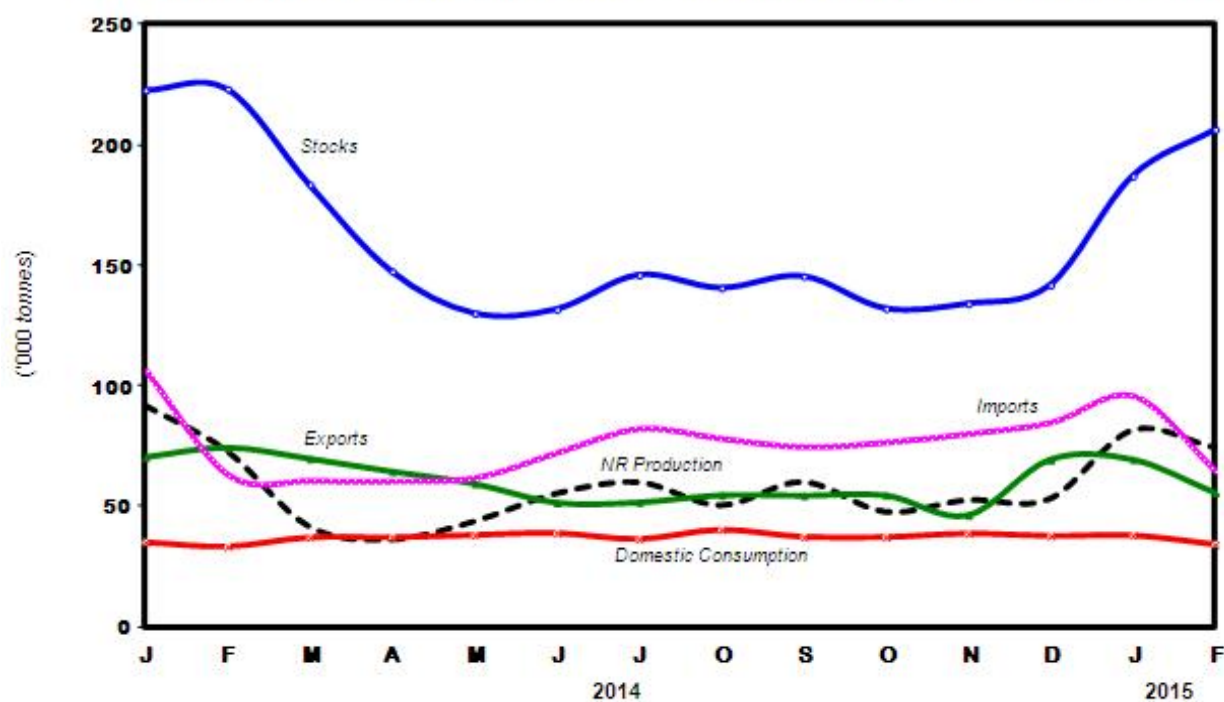
8. PRODUCTIVITY

In February 2015, the productivity of NR in estates was registered at **141.4** kilogramme per hectare, dropped by **6.1** per cent as compared to a month ago. Year-on-year showed an increase in productivity by **9.6** kilogramme per hectare (**+7.3%**).

9. PRINCIPAL STATISTICS

Chart 1 below shows the monthly time series.

Chart 1 - Monthly production, exports, imports, domestic consumption and stocks of natural rubber 2014/2015



*** Notes:**

Data for February 2015 is **provisional**. The data will be updated based on the latest available figures and subsequently published in the March 2015 publication.

Released by:

**THE OFFICE OF CHIEF STATISTICIAN MALAYSIA
DEPARTMENT OF STATISTICS, MALAYSIA
#myHariBulan# #myBulan# #myTahun#**

Contact person:

Norrita binti Amran
Public Relation Officer
Corporate and User Services Division
Department of Statistics, Malaysia

Tel : +603-8885 7942

Fax : +603-8888 9248

Email : norrita.amran@stats.gov.my

Contact person:

Baharudin Mohamad
Public Relation Officer
Strategic Communication and International Division
Department of Statistics Malaysia

Tel : +603-8090 4681

Fax : +603-8888 9248

Email : baharudin[at]dosm.gov.my

Copyright ©2025 Department of Statistics Malaysia Official Portal. All Rights Reserved.