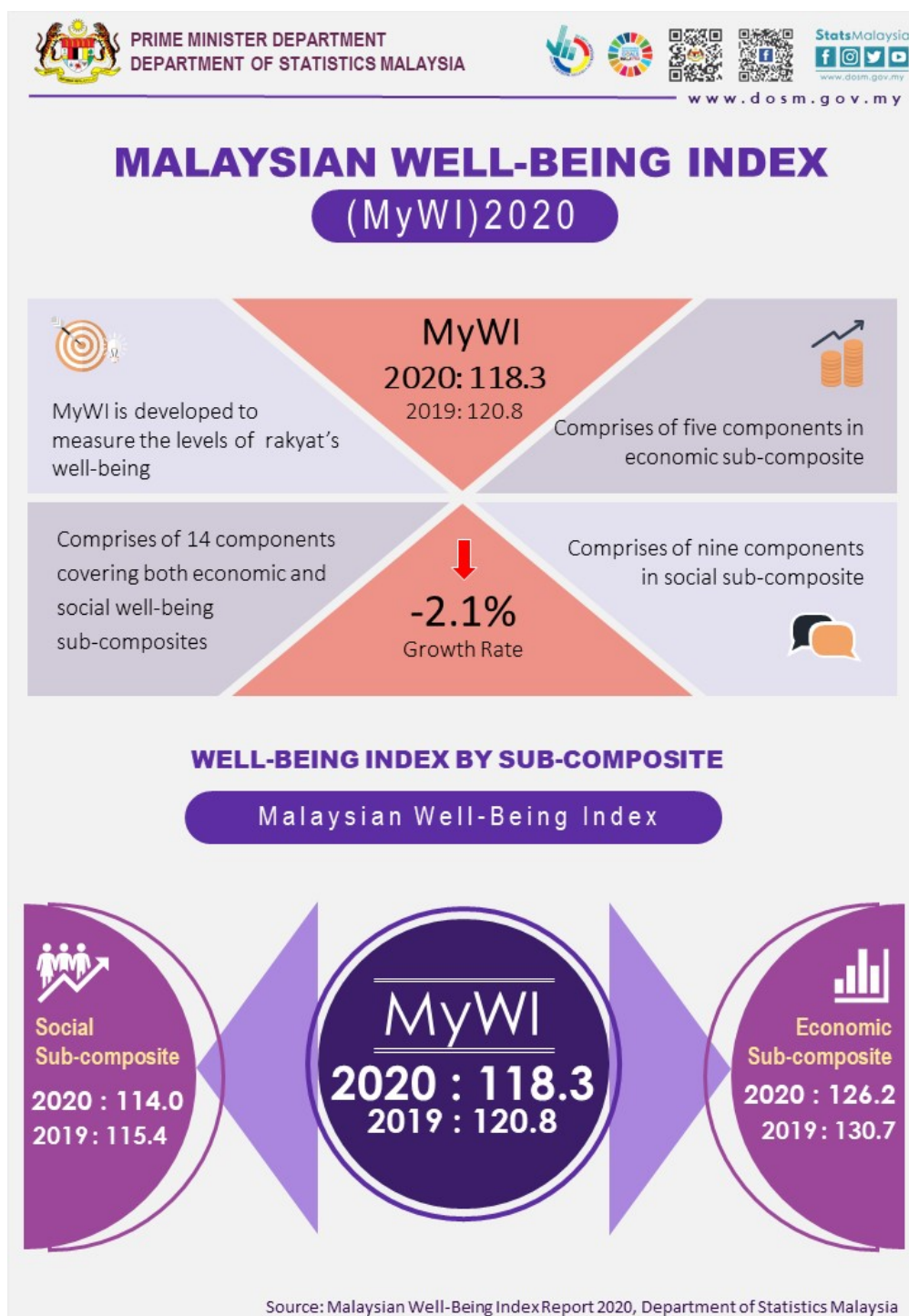




MINISTRY OF ECONOMY
DEPARTMENT OF STATISTICS MALAYSIA

MALAYSIAN WELL-BEING INDEX 2020



INTRODUCTION

Malaysian Well-being Index (MyWI) is developed to measure levels of rakyat's well-being from an economic and social perspective. MyWI comprises of two sub-composites, namely economic well-being and social well-being.

Throughout 2020, the socioeconomic landscape of the country experienced uncertain momentum following the health and economic crisis. The findings of MyWI 2020 showed that almost all components of well-being are affected by COVID-19 transmission.

MYWI'S OVERALL ACHIEVEMENT

The performance of MyWI in 2020 decreased 2.1 per cent to 118.3 points as compared to 120.8 points in 2019. Both of the well-being sub-composites showed a decline in 2020. The economic well-being sub-composite recorded a decrease of 3.4 per cent in 2020 to 126.2 points and the social well-being sub-composite declined 1.2 per cent to 114.0 points at the same period.

The performance of MyWI in 2020 decreased 2.1 per cent to 118.3 points as compared to 120.8 points in 2019. Both of the well-being sub-composites showed a decline in 2020. The economic well-being sub-composite recorded a decrease of 3.4 per cent in 2020 to 126.2 points and the social well-being sub-composite declined 1.2 per cent to 114.0 points at the same period.

Table 1: Malaysian Well-Being Index, 2019 and 2020

Component 2000=100	2019	2020	2019-2020	
			Index point change	Growth (%)
Economic Well-being	130.7	126.2	-4.5	-3.4
• Transport	137.9	127.7	-10.2	-7.4
• Communications	130.5	130.0	-0.5	-0.4
• Education	130.9	132.2	1.3	1.0
• Income and Distribution	130.3	117.6	-12.7	-9.7
• Working Life	123.7	123.7	0.0	0.0
Social Well-being	115.4	114.0	-1.4	-1.2
• Housing	119.3	120.5	1.2	1.0
• Entertainment and Recreation	131.5	110.9	-20.6	-15.7
• Public Safety	126.6	140.4	13.8	10.9
• Social Participation	118.7	121.7	3.0	2.5
• Governance	121.5	120.4	-1.1	-0.9
• Culture	109.3	91.7	-17.6	-16.1
• Health	107.1	113.1	6.0	5.6
• Environment	106.9	109.8	2.9	2.7
• Family	97.4	97.0	-0.4	-0.4
MALAYSIAN WELL-BEING INDEX (MyWI)	120.8	118.3	-2.5	-2.1

Based on the index points, economic well-being analysis shows that the education component recorded the highest index of 132.2 index points in 2020, followed by the communications component (130.0 index points) and transport (127.7 index points). In terms of social well-being, the public safety component recorded the highest index at 140.4 index points, followed by social participation (121.7 index points) and housing (120.5 index points). The Culture Index is below 100.0 index points in 2020. Meanwhile the Family Index has yet to improve registering index of less than 100.0 index points for both years.

Released By:

DATO' SRI DR. MOHD UZIR MAHIDIN
CHIEF STATISTICIAN MALAYSIA
DEPARTMENT OF STATISTICS, MALAYSIA

 **DrUzir_Mahidin**   **Dr_Uzir**

#myHariBulan# #myBulan# #myTahun#

Contact person:

Mohd Yusrizal Ab Razak

Public Relation Officer

Strategic Communication and International Division

Department of Statistics, Malaysia

Tel : +603-8885 7942

Fax : +603-8888 9248

Email : yusrizal.razak[at]dosm.gov.my

Contact person:

Baharudin Mohamad

Public Relation Officer

Strategic Communication and International Division

Department of Statistics Malaysia

Tel : +603-8090 4681

Fax : +603-8888 9248

Email : baharudin[at]dosm.gov.my

Copyright ©2025 Department of Statistics Malaysia Official Portal. All Rights Reserved.