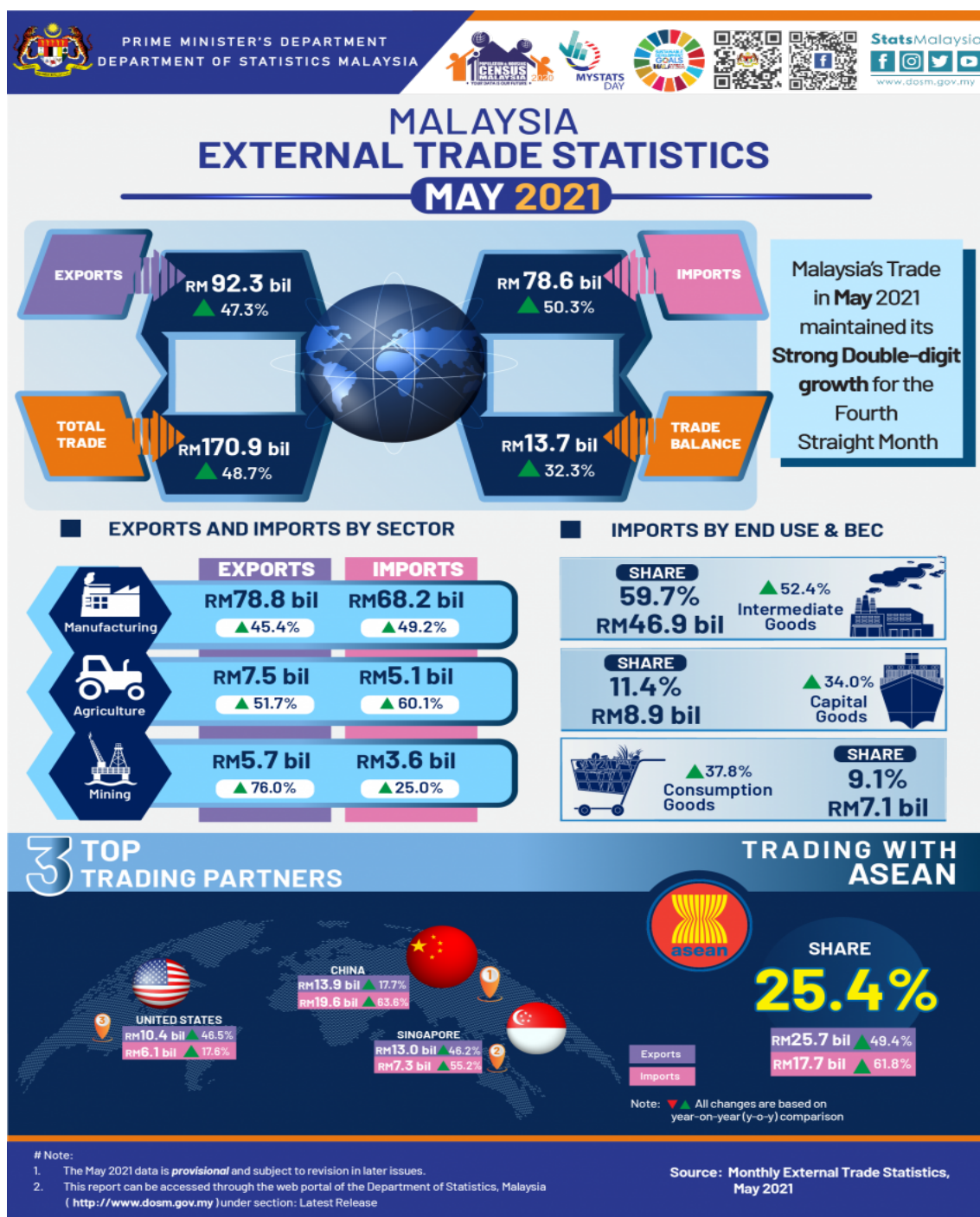




MINISTRY OF ECONOMY
DEPARTMENT OF STATISTICS MALAYSIA

MALAYSIA EXTERNAL TRADE STATISTICS BULLETIN, MAY 2021



KEY FACTS

Malaysia's total trade in May 2021 surged by 48.7 per cent, reaching RM170.9 billion as compared with RM114.9 billion in May 2020. Exports stayed strong at a higher level, increasing by 47.3 per cent to RM92.3 billion as against a year ago. Imports in May 2021 was valued at RM78.6 billion soared by 50.3 per cent year-on-year (y-o-y). Trade balance continued to record a surplus with a value of RM13.7 billion with an increase of 32.3 per cent.

On a month-on-month (m-o-m) basis, exports, imports, total trade and trade surplus recorded decreases of 12.6 per cent, 7.8 per cent, 10.4 per cent and 32.5 per cent, respectively.

A. THE PERFORMANCE OF EXPORTS

Malaysia's exports remained at a higher level, jumped by 47.3 per cent to RM92.3 billion. The expansion was driven by both domestic exports and re-exports. Domestic exports stood at RM78.7 billion contributed 85.2 per cent to total exports, grew by 45.9 per cent. On the same note, re-exports which was valued at RM13.7 billion, grew by 56.1 per cent y-o-y. In comparison to April 2021, exports fell 12.6 per cent or RM13.3 billion. Analysis of the seasonally adjusted terms m-o-m, exports decreased by 2.1 per cent or RM12.8 billion to RM92.9 billion.

Chart 1: Domestic Exports, Re-Exports (RM billion) and Annual Change (%)

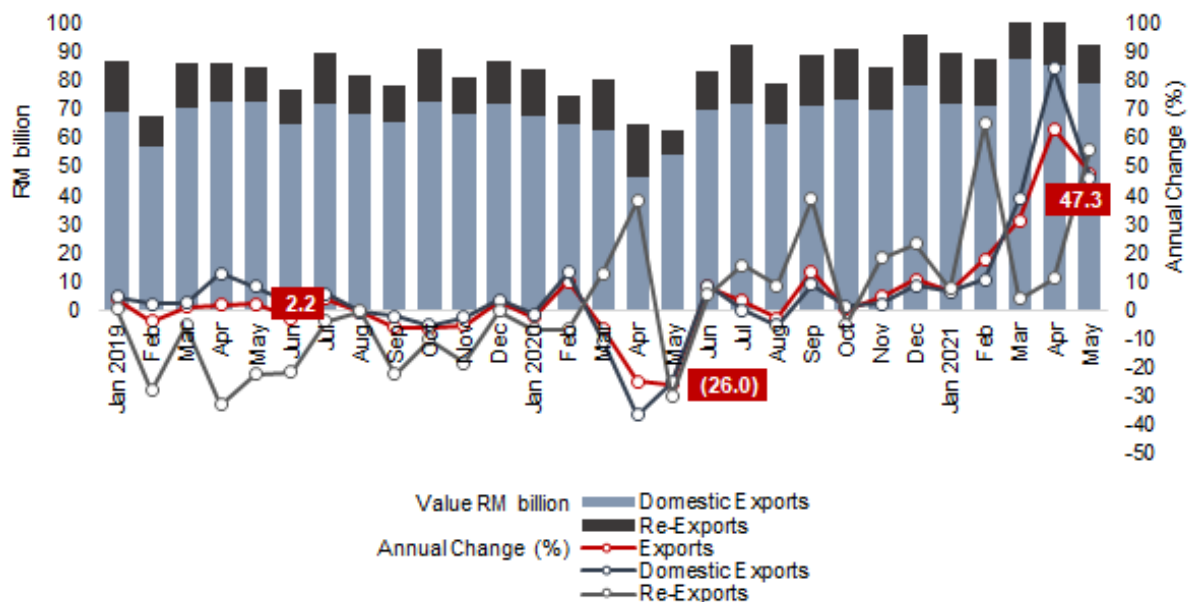
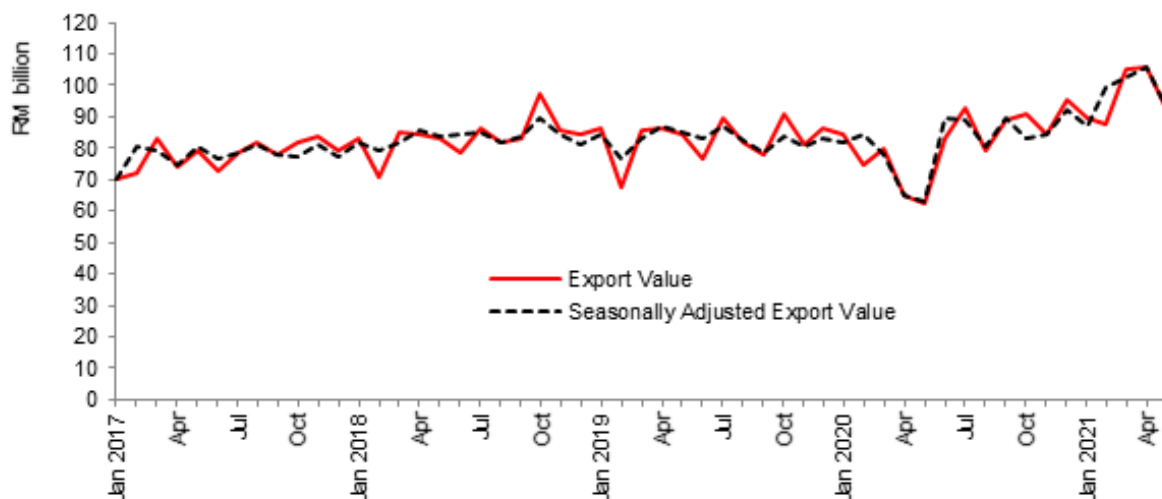


Chart 2: Actual Export Value and Seasonally Adjusted Export Value, RM billion



B. THE PERFORMANCE OF IMPORTS

Malaysia's imports in May 2021 totaled RM78.6 billion, registered the sharpest expansion growth ever since 1998 of 50.3 per cent or RM26.3 billion. On a m-o-m basis, imports fell 7.8 per cent or RM6.7 billion. Based on seasonally adjusted terms, imports shrank 10.6 per cent.

On a y-o-y basis, imports by end use registered an increase with the rise of the intermediate goods, capital goods and consumption goods.

Chart 3: Imports, Value (RM billion) and Annual Change (%)

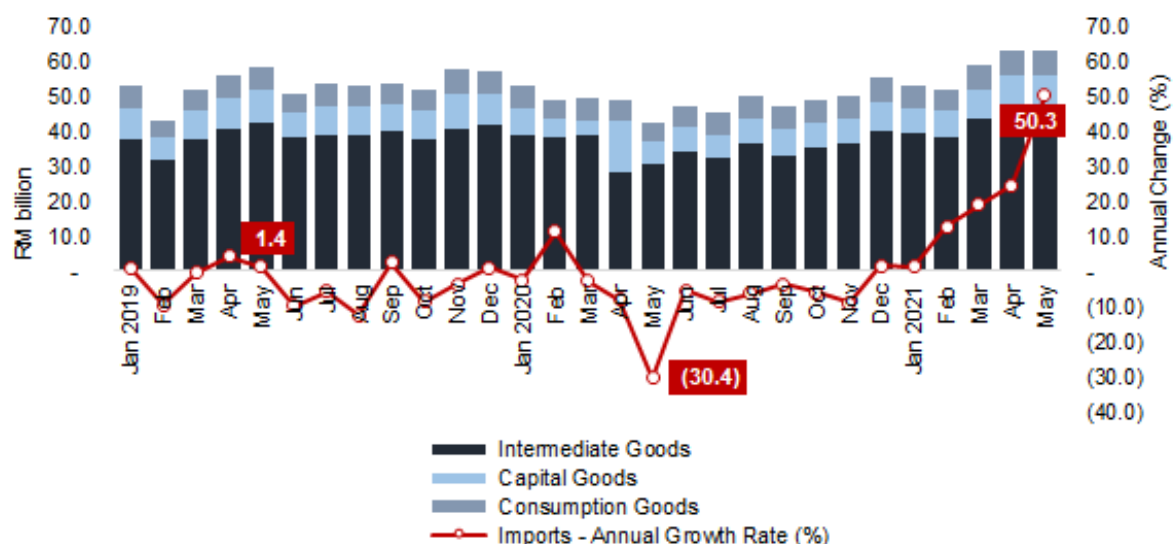
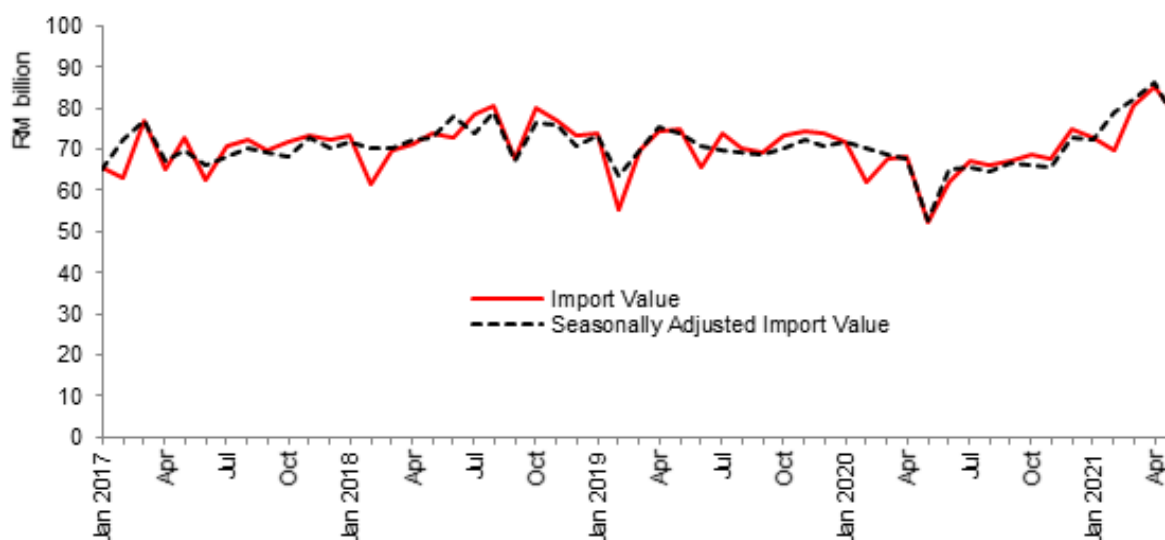


Chart 4: Actual Import Value and Seasonally Adjusted Import Value, RM billion



Download full article [here](#)

Download: [Appendix here](#)

#Notes:

1. The May 2021 data is provisional and subject to revision in later issues.
2. This report can be accessed through the web portal of the Department of Statistics, Malaysia (<https://www.dosm.gov.my>) under section: Latest Release.

Released By:

DATO' SRI DR. MOHD UZIR MAHIDIN
CHIEF STATISTICIAN MALAYSIA
DEPARTMENT OF STATISTICS, MALAYSIA

 **DrUzir_Mahidin**   **Dr_Uzir**

#myHariBulan# #myBulan# #myTahun#

Contact person:

Mohd Yusrizal Ab Razak
Public Relation Officer
Strategic Communication and International Division
Department of Statistics, Malaysia
Tel : +603-8885 7942
Fax : +603-8888 9248
E-mail : yusrizal.razak[at]dosm.gov.my

Contact person:

Baharudin Mohamad
Public Relation Officer
Strategic Communication and International Division
Department of Statistics Malaysia
Tel : +603-8090 4681
Fax : +603-8888 9248
Email : baharudin[at]dosm.gov.my

Copyright ©2026 Department of Statistics Malaysia Official Portal. All Rights Reserved.