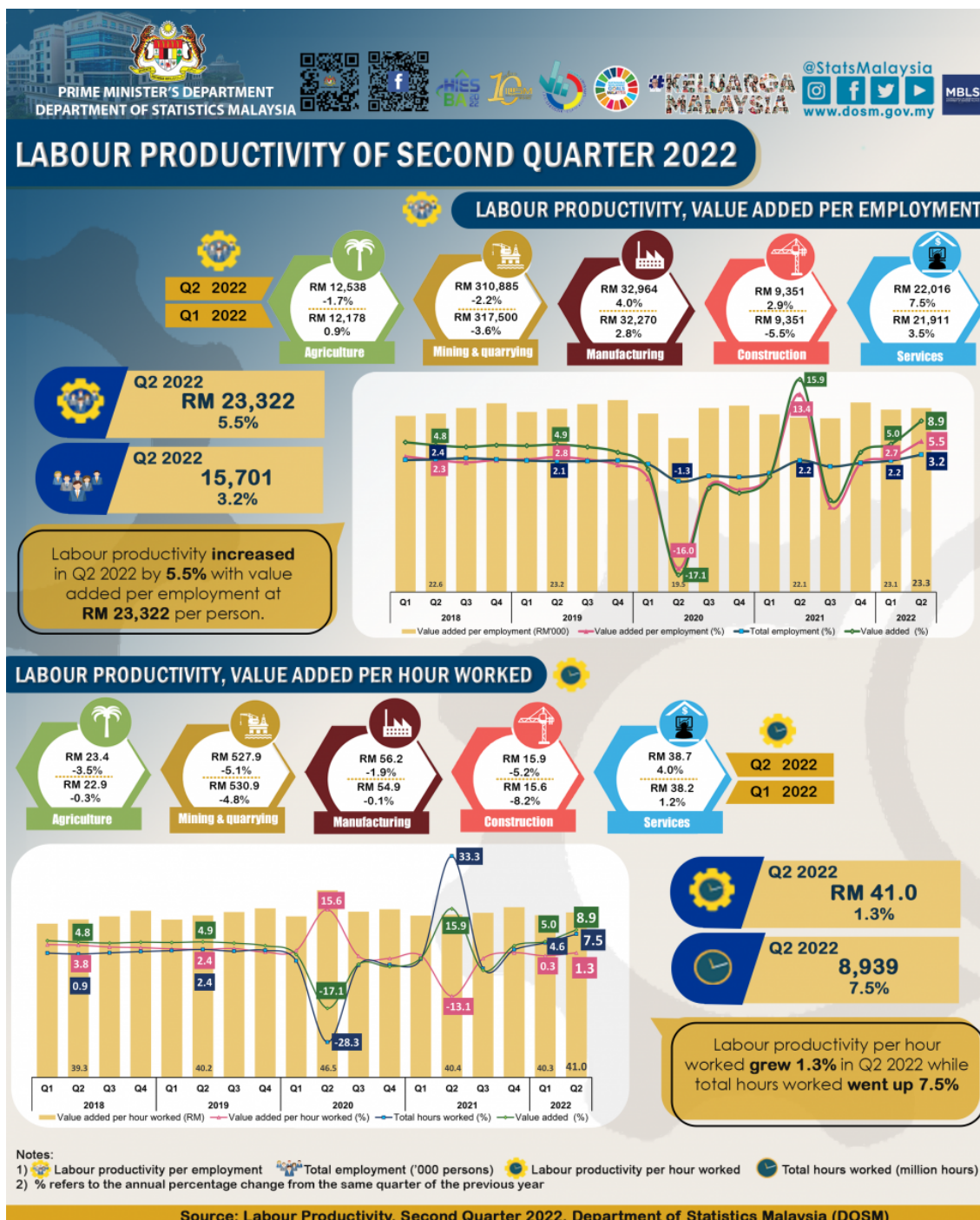




MINISTRY OF ECONOMY  
DEPARTMENT OF STATISTICS MALAYSIA

## LABOUR PRODUCTIVITY OF SECOND QUARTER 2022



## Malaysia's Labour Productivity

**Malaysia's labour productivity as expressed in terms of value added per hour worked improved 1.3 per cent**, year-on-year. The growth of labour productivity is in tandem with the expansion of the country's Gross Domestic Product (GDP) at 8.9 per cent as compared to 5.0 per cent in the last quarter, while total hours worked went up 7.5 per cent (Q1 2022: 4.6%).

**Labour productivity as measured by value added per employment rose 5.5 per cent** (Q1 2022: 2.7%), as employment increased 3.2 per cent (Q1 2022: 2.2%). **Labour productivity by value added per hour worked was RM41.0** (Q1 2022: RM40.3 per hour) while **value added per employment was RM23,322** (Q1 2022: RM23,124 per person).

**Total hours worked increased to 8.9 billion** as compared to 8.3 billion hours worked in the same quarter a year ago. **Meanwhile, total employment also increased to 15.7 million persons** as compared to 15.6 million persons in the previous quarter.

### Malaysia's Labour Productivity by five (5) economic activities

**For labour productivity per hour worked** by economic activity, all sectors recorded negative growth except for **Services sector which posted a growth of 4.0 per cent** (Q1 2022: 1.2%). **Construction** sector fell 5.2 per cent, while three (3) other sectors remained in a declining trend that were **Mining and quarrying** (-5.1%), **Agriculture** (-3.5%) and **Manufacturing** (-1.9%).

**Meanwhile, labour productivity per employment** for **Services** and **Manufacturing** sectors increased 7.5 per cent and 4.0 per cent respectively, and **Construction** sector grew 2.9 per cent. While **Mining and quarrying** sector continued to post a negative growth of 2.2 per cent and **Agriculture** sector fell by 1.7 per cent.

**All sectors recorded increases in total hours worked**, Manufacturing (11.3%), Construction (8.0%), Services (7.7%), Mining and quarrying (4.8%), and Agriculture (1.1%). **The rise in number of employment occurred mainly in Manufacturing sector (4.9%; +127.4 thousand persons), Services (4.2%; +386.8 thousand persons), and Mining and quarrying (1.8%; +1.3 thousand persons).**

The full publication of the Labour Productivity Second Quarter 2022 can be downloaded through eStatistik [eStatistik](#) portal.

### Released By:

**DEPARTMENT OF STATISTICS, MALAYSIA**

**#myHariBulan# #myBulan# #myTahun#**

### Contact person:

Mohd Yusrizal Ab Razak  
Public Relation Officer  
Strategic Communication and International Division  
Department of Statistics, Malaysia

**Tel :** +603-8885 7942

**Fax :** +603-8888 9248

**Email :** yusrizal.razak[at]dosm.gov.my

### Contact person:

Baharudin Mohamad  
Public Relation Officer  
Strategic Communication and International Division  
Department of Statistics Malaysia  
Tel : +603-8090 4681  
Fax : +603-8888 9248  
Email : baharudin[at]dosm.gov.my

**Copyright ©2026 Department of Statistics Malaysia Official Portal. All Rights Reserved.**