



MINISTRY OF ECONOMY  
DEPARTMENT OF STATISTICS MALAYSIA

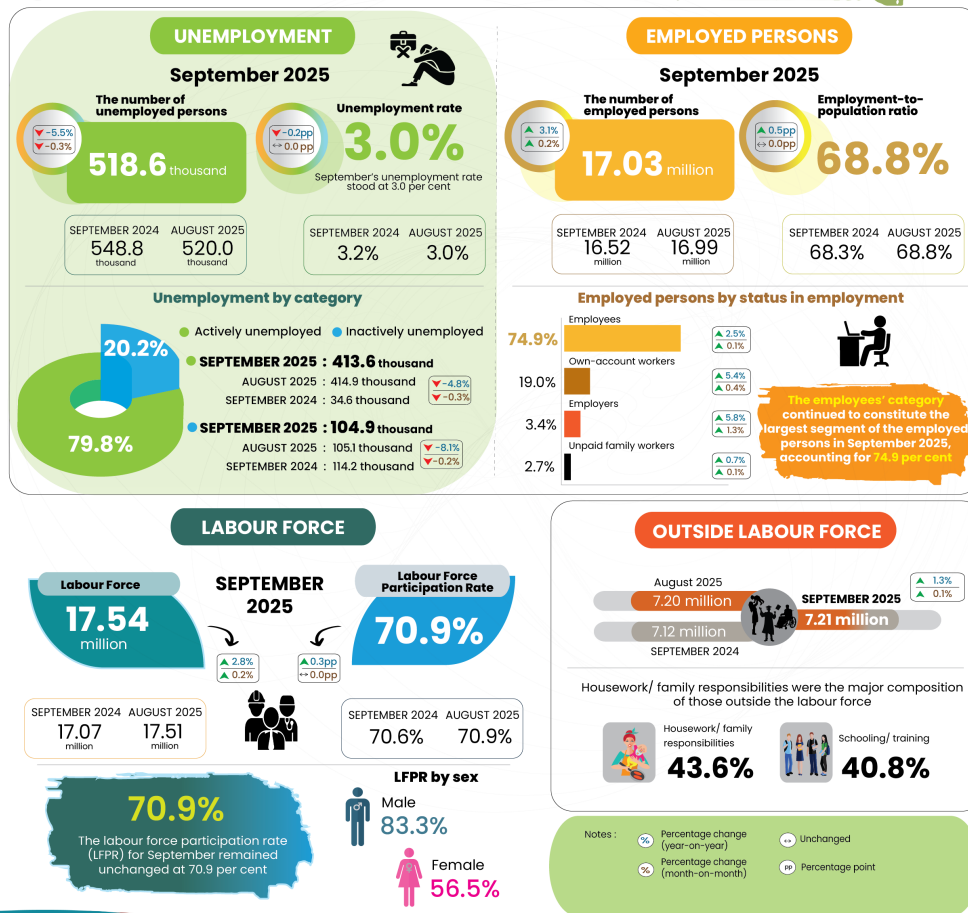
LABOUR FORCE STATISTICS, SEPTEMBER 2025



MINISTRY OF ECONOMY  
DEPARTMENT OF STATISTICS MALAYSIA

**MALAYSIA  
LABOUR FORCE,  
SEPTEMBER 2025**

The unemployed in September 2025 decreased further to 518.6 thousand persons, recording an unemployment rate of **3.0 per cent**



@StatsMalaysia



- In September 2025, the number of **employed persons** continued to rise, increasing by **0.2 per cent (+38.3 thousand persons)** to **17.03 million persons** from 16.99 million persons in August 2025. The **employment-to-population ratio**, which indicates the ability of an economy to create employment, remained unchanged at **68.8 per cent** in September 2025, consistent with the level recorded in August 2025.
- Employment by economic sectors showed that the number of employed persons in the Services sector continued to increase steadily during the month, primarily in Wholesale and retail trade; Accommodation and food & beverage services; as well as Information and communication activities. Likewise, the Manufacturing, Construction, Mining & quarrying and Agriculture sectors also recorded increases in employment.
- The **employees'** category continued to be the largest segment of the total employed persons in September 2025, accounting for **74.9 per cent**. This category recorded a **0.1 per cent increase (+17.9 thousand persons)** to **12.74 million persons** (August 2025: 12.73 million persons). The number of **own-account workers** was also on an increasing trend, with a rise of **0.4 per cent (+12.6 thousand persons)** to **3.24 million persons**, compared to the previous month (August 2025: 3.22 million persons).
- The number of **unemployed persons** during the month continued to be on a downtrend, with a decrease of **0.3 per cent (-1.4 thousand persons)** to **518.6 thousand persons** (August 2025: 520.0 thousand persons), registering a **3.0 per cent unemployment rate**, as in the prior month.
- In September 2025, the **labour force** sustained its growth momentum, increasing by **0.2 per cent (+36.8 thousand persons)** month-on-month to **17.54 million persons**, compared to 17.51 million persons in the previous month. The **labour force participation rate (LFPR)** for September 2025 remained unchanged at **70.9 per cent**, the same as recorded in August 2025.
- The number of persons **outside the labour force** in September 2025 edged up by **0.1 per cent (+7.8 thousand persons)** to **7.21 million persons**, compared to 7.20 million persons in August 2025. **Housework/ family responsibilities** were the major composition of those outside the labour force, accounting for **43.6 per cent** of the total. The **schooling/ training** category ranked second with **40.8 per cent**.

The full publication of the Labour Force Report, September 2025 can be downloaded through eStatistik Portal

**Released by:**

**DEPARTMENT OF STATISTICS MALAYSIA**

**10th November 2025**

**Contact person:**

Baharudin Mohamad

Public Relation Officer

Strategic Communication and International Division

Department of Statistics Malaysia

Tel : +603-8090 4681

Fax : +603-8888 9248

Email : baharudin[at]dosm.gov.my

**Copyright ©2026 Department of Statistics Malaysia Official Portal. All Rights Reserved.**