



MINISTRY OF ECONOMY  
DEPARTMENT OF STATISTICS MALAYSIA

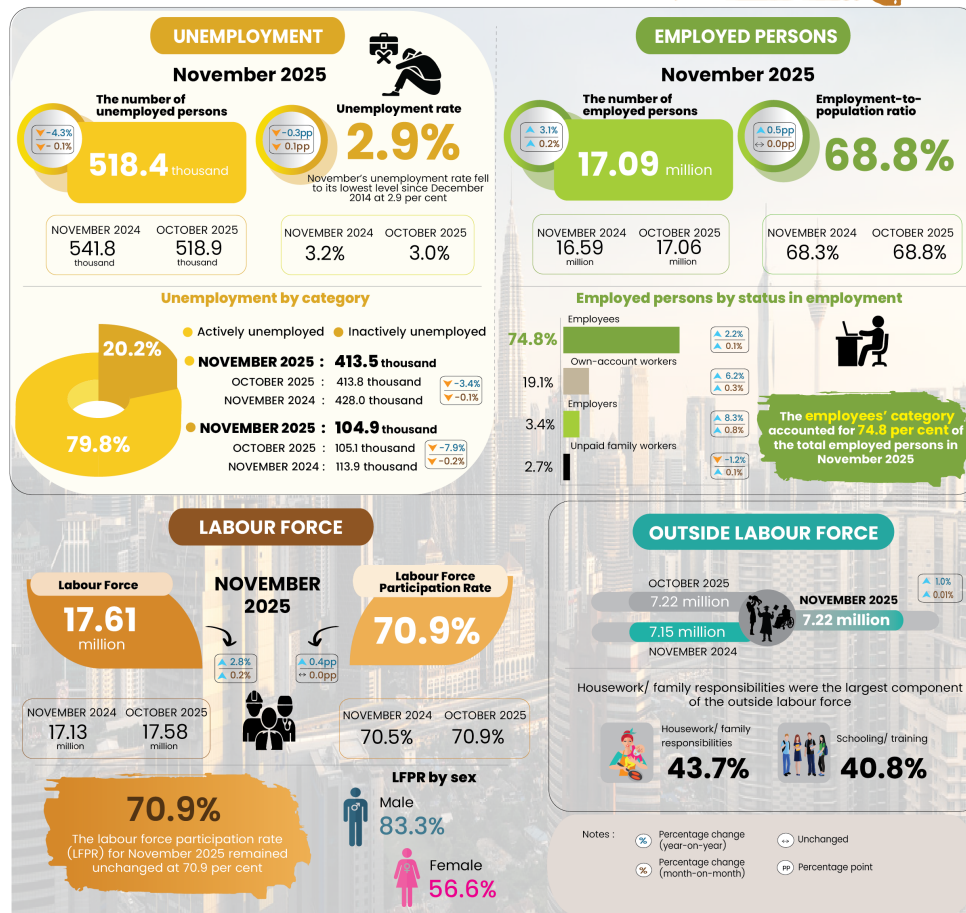
LABOUR FORCE STATISTICS, NOVEMBER 2025



MINISTRY OF ECONOMY  
DEPARTMENT OF STATISTICS MALAYSIA

**MALAYSIA  
LABOUR FORCE,  
NOVEMBER 2025**

The unemployment rate in November 2025 dropped to **2.9 per cent**, the lowest rate in eleven years, recording 518.4 thousand unemployed



@StatsMalaysia

BK25  
BANKI EKONOMI 2026  
DATA NADI EKONOMI RAKYAT

MALAYSIA MADANI  
keajaiban

ODIN  
OPEN DATA INITIATIVE  
MALAYSIA  
TRANSPARENT. UJALA.  
IN THE WORLD

20 October

2016 - 2030

- In November 2025, the number of **employed persons** maintained its upward trajectory, rising by **0.2 per cent (+32.4 thousand persons)** to **17.09 million persons**, as against last month (October 2025: 17.06 million persons). The **employment-to-population ratio**, reflecting the ability of an economy to create jobs, remained at **68.8 per cent** in November 2025, the same as in October 2025.
- In addition, the number of employed persons in the Services sector continued to show steady growth, particularly in Human health and social work activities; Wholesale & retail trade, and Accommodation and food & beverage services activities. Likewise, the Agriculture, Manufacturing, Construction and Mining & quarrying sectors also registered increases in employment.
- The **employees'** category accounted for **74.8 per cent** of the total employed persons in November 2025. This category recorded a rise of **0.1 per cent (+16.6 thousand persons)**, reaching **12.78 million persons** compared to the previous month (October 2025: 12.76 million persons). Similarly, the number of **own-account workers** was also increased, expanding by **0.3 per cent (+10.8 thousand persons)** to **3.26 million persons** as against the prior month at 3.25 million persons.
- During the month, the number of **unemployed persons** went down by **0.1 per cent (-0.5 thousand persons)** from 518.9 thousand persons in October 2025 to record **518.4 thousand persons**. November's **unemployment rate** fell to its lowest level since December 2014 at **2.9 per cent**, falling by **0.1 percentage points** from 3.0 per cent in the previous month.
- The **labour force** continued trending upward in November 2025, registering a month-on-month increase of **0.2 per cent (+31.9 thousand persons)** to **17.61 million persons** (October 2025: 17.58 million persons). The **labour force participation rate (LFPR)** for November remained unchanged at **70.9 per cent**, as recorded in October 2025.
- The number of persons **outside the labour force** during the month increased slightly by **0.01 per cent (+0.7 thousand persons)** to **7.22 million persons** (October 2025: 7.22 million persons). **Housework/ family responsibilities** were the largest component of the outside labour force, with a share of **43.7 per cent**, followed by individuals engaged in **schooling/ training** category at **40.8 per cent**.

The full publication of the Labour Force Report, November 2025 can be downloaded through is eStatistik Portal

**Released by:**

**DEPARTMENT OF STATISTICS MALAYSIA**

**09th January 2026**

**Contact person:**

Baharudin Mohamad

Public Relation Officer

Strategic Communication and International Division

Department of Statistics Malaysia

Tel : +603-8090 4681

Fax : +603-8888 9248

Email : baharudin[at]dosm.gov.my

**Copyright ©2026 Department of Statistics Malaysia Official Portal. All Rights Reserved.**