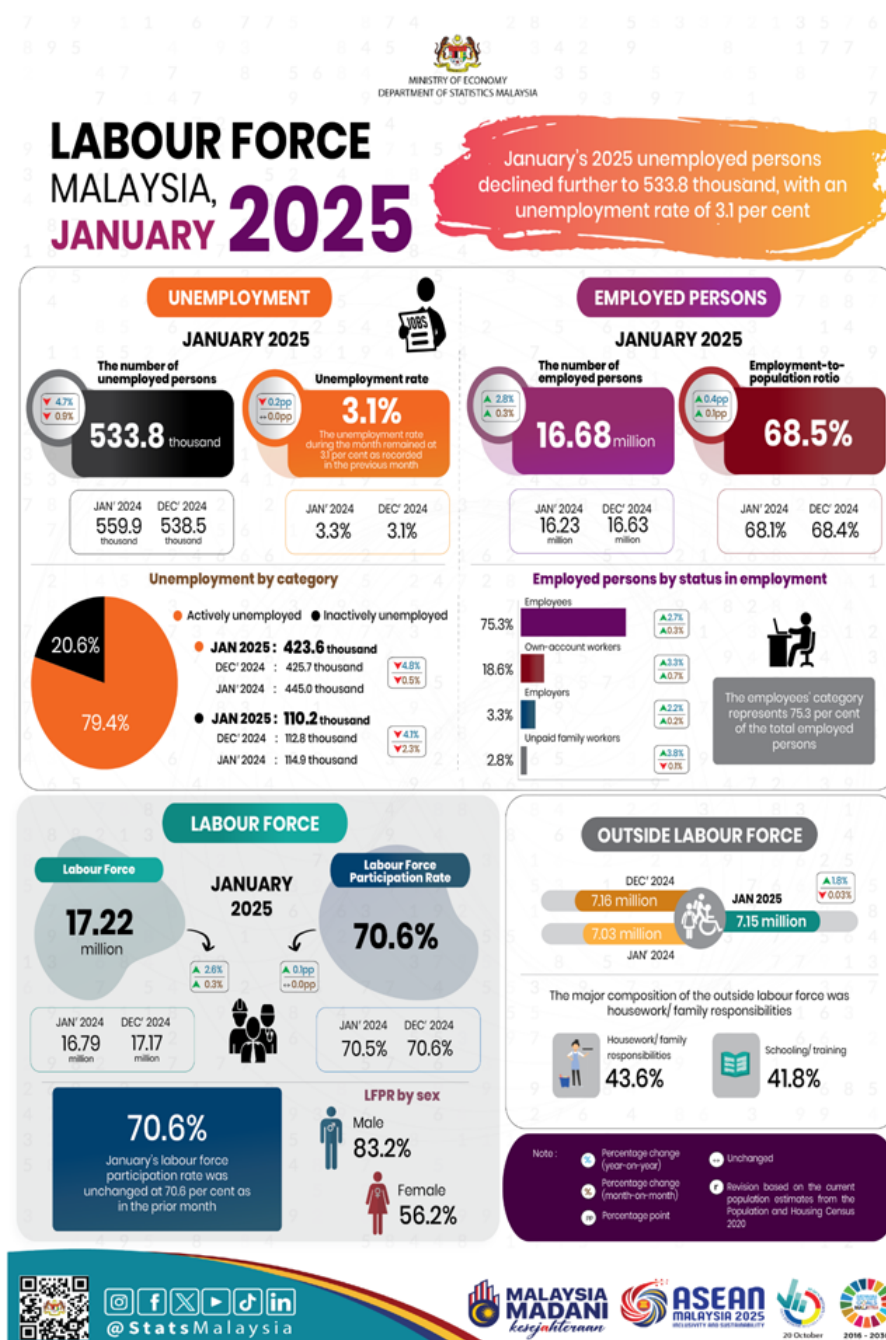




MINISTRY OF ECONOMY  
DEPARTMENT OF STATISTICS MALAYSIA

## LABOUR FORCE STATISTICS, JANUARY 2025



- In January 2025, the number of **employed persons** improved further with a rise of **0.3 per cent (+54.5 thousand)**, reaching **16.68 million** (December[r] 2024: 16.63 million). The **employment-to-population ratio**, which indicates the ability of an economy to create employment, rose by **0.1 percentage points to 68.5 per cent** (December[r] 2024: 68.4%).
- By economic sector, employment in the Services sector showed steady growth, particularly in Accommodation and food & beverage services; Wholesale & retail trade; and Human health and social work activities. Likewise, the Manufacturing, Construction and Agriculture and Mining & quarrying sectors also experienced positive employment growth in January 2025.
- In January 2025, **75.3 per cent** of the total employed persons were **employees'**, registering an increase of **0.3 per cent (+32.0 thousand persons)** to **12.56 million persons** (December[r] 2024: 12.53 million persons). Similarly, the number of **own-account workers** rose by **0.7 per cent (+21.6 thousand persons)**, totalling **3.11 million** (December[r] 2024: 3.09 million persons).
- The number of **unemployed persons** continued to decrease in January 2025, with a reduction of **4.7 thousand persons (-0.9%)** to **533.8 thousand persons** (December[r] 2024: 538.5 thousand persons). The **unemployment rate** during the month remained at **3.1 per cent** as recorded in the previous month.
- In January 2025, the number of **labour force** improved further with a rise of **0.3 per cent (+49.8 thousand persons)** to record **17.22 million persons** (December[r] 2024: 17.17 million). January's **labour force participation rate (LFPR)** was unchanged at **70.6 per cent** as in the prior month.
- The number of persons **outside the labour force** in January 2025 slightly decreased by **0.03 per cent (-2.0 thousand persons)** to **7.15 million persons** (December[r] 2024: 7.16 million persons). The major composition of the outside labour force was **housework/ family responsibilities**, accounting for **43.6 per cent**, followed by the **schooling/ training** category at **41.8 per cent**.

**Note:** [r] - Revision based on the current population estimates from Population and Housing Census 2020

**Contact person:**

Baharudin Mohamad  
Public Relation Officer  
Strategic Communication and International Division  
Department of Statistics Malaysia  
Tel : +603-8090 4681  
Fax : +603-8888 9248  
Email : baharudin[at]dosm.gov.my

**Copyright ©2025 Department of Statistics Malaysia Official Portal. All Rights Reserved.**