



MINISTRY OF ECONOMY  
DEPARTMENT OF STATISTICS MALAYSIA

## KEY STATISTICS OF LABOUR FORCE IN MALAYSIA, JUNE 2020



DEPARTMENT OF STATISTICS MALAYSIA

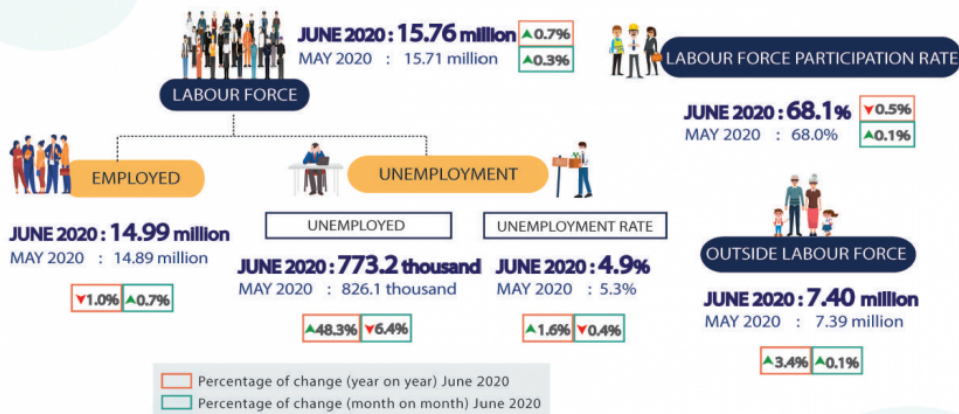


StatsMalaysia

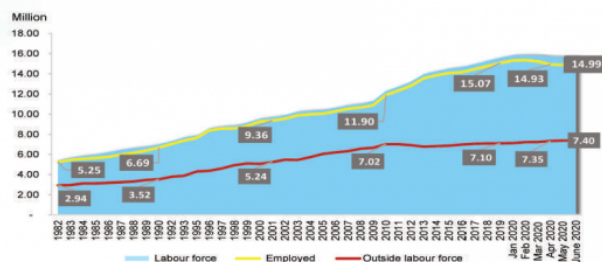
www.dsm.gov.my

### LABOUR FORCE MALAYSIA JUNE 2020

The number of employed persons in June 2020 increased marginally by **0.7 per cent** (May 2020: -0.3%) while unemployment rate declined by 0.4 percentage points to **4.9 per cent** (May 2020: 5.3%)

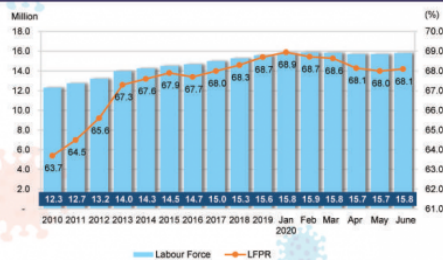


#### NUMBER OF LABOUR FORCE, EMPLOYED PERSONS AND OUTSIDE LABOUR FORCE, MALAYSIA, 1982-2019 AND JANUARY-JUNE 2020



The number of employed persons recorded an increase to **14.99 million** persons in June 2020 from 14.93 million persons in the previous month. Besides, outside labour force recorded an increase to **7.40 million** persons as compared to May 2020.

#### NUMBER OF LABOUR FORCE AND LABOUR FORCE PARTICIPATION RATE, 2010-2019 DAN JANUARY-JUNE 2020



#### UNEMPLOYED AND UNEMPLOYMENT RATE, 2010-2019 DAN JANUARY-JUNE 2020



Source: Monthly Labour Force Survey, Department of Statistics Malaysia



## CONCEPTS AND DEFINITIONS



### What is Labour Force Survey (LFS)?

Labour Force Survey (LFS) which was conducted to collect information on the structure and distribution of labour force, employment and unemployment.

Concepts and definitions used in LFS are based on the standard guidelines of International Labour Organizations (ILO) which is also used by other country.

The survey population cover persons who live in private living quarters and excludes persons residing in institutions such as hotels, hospitals, prisons and others.

LFS covers both urban and rural areas of all states in Malaysia through personal interview method.

LFS comprises of the economically active and inactive population. To measure the economically active population, the LFS uses the age limit of 15 to 64 years.

LFS uses the actual status approach, where a person is classified on the basis of his labour force activity during the reference week.



### LABOUR FORCE

Labour force refers to those who, during the reference week are in the 15 to 64 years (in completed years at last birthday) and who are either employed or unemployed.



### OUTSIDE LABOUR FORCE

All persons not classified as employed or unemployed include housewives, students (including those going for further studies), retired, disabled persons and those not interested in looking for a job.



### EMPLOYED

Employed refers to all persons who, at any time **during the reference week worked at least one hour** for pay, profit or family gain (as an employer, employee, own-account worker or unpaid family worker). Also considered as employed are persons who did not work during the reference week because of illness, injury, bad weather, leave, labour dispute and social or religious reasons but had a job, farm, enterprise or other family enterprise to return to. Also included are those on temporary lay-off with pay who would definitely be called back to work.



### UNEMPLOYED

Unemployed refers to those who do not have a job but are interested to work and seeking for a job. There are two groups of unemployed that is the actively unemployed and inactively unemployed.



### UNEMPLOYMENT RATE

Unemployment rate is the proportion of unemployed population to the total population in labour force. This rate measures the percentage of unemployed population in the labour force.



### LABOUR FORCE PARTICIPATION RATE

The economic activity of a population depends on the demographic characteristics of that population. The proportion of economically active population, therefore, differs between sub-groups of that population. These variations are measured by specific activity rates termed as labour force participation rate. Labour force participation rate is defined as the ratio of the labour force to the working age population (15 to 64 years), expressed as percentage.

Source : Monthly Labour Force Survey, Department of Statistics Malaysia

## Labour Force

The opening of more economic activities since 10 June 2020 initiated more positive impact with an increase in the number of labour force by 49.5 thousand persons to record 15.76 million persons as compared to May 2020.

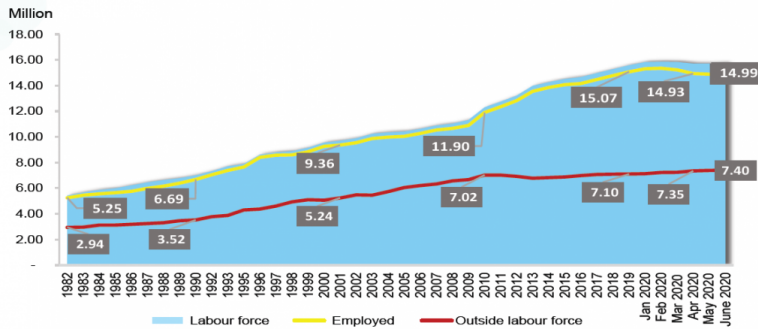
## Employed

Employed persons grew marginally by 0.7 per cent month-on-month (May 2020: -0.3%) to 14.99 million persons. Employment-to-population ratio increased 0.3 percentage points from the previous month to post 64.7 per cent.

## Outside Labour Force

The number of outside labour force increased marginally by 0.1 per cent (+6.4 thousand persons) as against May 2020, bringing the total number to 7.40 million persons. The largest share was outside labour force due to housework/ family responsibilities, followed by schooling.

NUMBER OF LABOUR FORCE, EMPLOYED PERSONS AND OUTSIDE LABOUR FORCE, MALAYSIA, 1982-2019 AND JANUARY-JUNE 2020

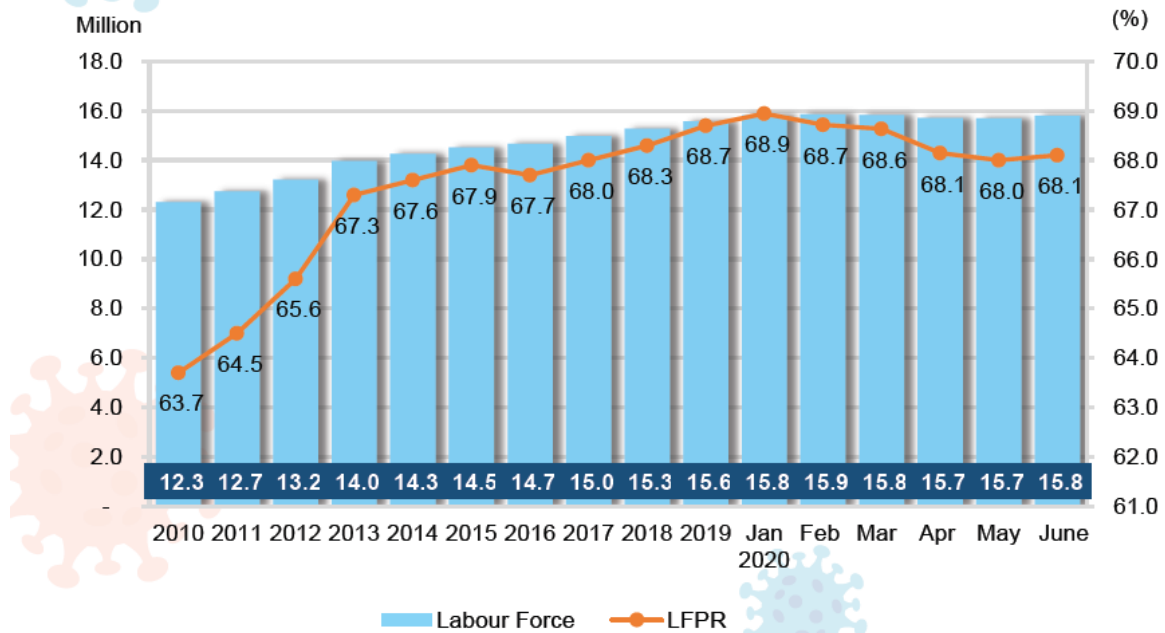


The number of employed persons recorded an increase to **14.99 million** persons in June 2020 from 14.93 million persons in the previous month. Besides, outside labour force recorded an increase to **7.40 million** persons as compared to May 2020.

## Labour force participation rate (LFPR)

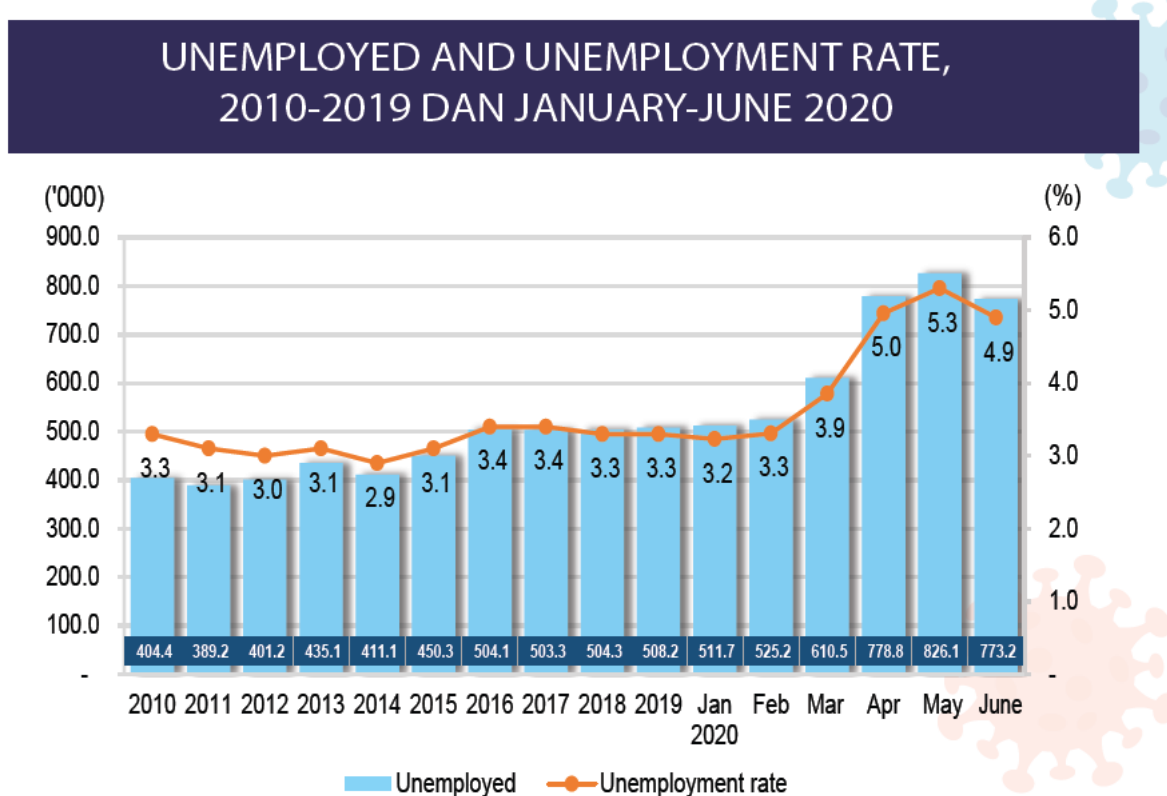
The LFPR in June 2020 recorded a marginal growth of 0.1 percentage point month-on-month to 68.1 per cent. Both male and female recorded slight increases of LFPR. Male LFPR was 80.3 per cent, increased 0.1 percentage point as against May 2020 (80.2%) while female LFPR also rose by 0.1 percentage point to record 55.1 per cent (May 2020: 55.0%).

NUMBER OF LABOUR FORCE AND LABOUR FORCE PARTICIPATION RATE, 2010-2019 DAN JANUARY-JUNE 2020



## Unemployment rate

A better labour market condition in June 2020 was reflected by the decline in unemployment rate by 0.4 percentage points month-on-month to 4.9 percent from a record-high of 5.3 per cent in May 2020. During the same period, the number of unemployed persons lessened by 52.8 thousand to 773.2 thousand persons (May 2020: 826.1 thousand persons). Meanwhile, year-on-year, the number of unemployed persons rose by 251.8 thousand



## TECHNICAL NOTES

This information is derived from the **Labour Force Survey (LFS)** which was conducted to collect information on the structure and distribution of labour force, employment and unemployment.

Concepts and definitions used in LFS are based on the standard guidelines of International Labour Organizations (ILO) through “Manual on Concepts and Methods: Surveys of Economically Active Population, Employment, Unemployment and Underemployment” which is also used by other country.

LFS covers both urban and rural areas of all states in Malaysia through personal interview method. The survey population cover persons who live in private living quarters and excludes persons residing in institutions such as hotels, hostels, hospitals, prisons, boarding houses and workers residing in construction work site.

The survey comprises of the economically active and inactive population. To measure the economically active population, the LFS uses the age limit of 15 to 64 years. The economically active population comprises of those employed and unemployed whereas those who are inactive is classified as outside the labour force.

LFS uses the actual status approach, where a person is classified on the basis of his labour force activity

during the reference week.

- **Labour force** refers to those who, during the reference week are in the 15 to 64 years (in completed years at last birthday) and who are either employed or unemployed.
- **Employed** refers to all persons who, at any time during the reference week worked at least one hour for pay, profit or family gain (as an employer, employee, own-account worker or unpaid family worker). Also considered as employed are persons who did not work during the reference week because of illness, injury, bad weather, leave, labour dispute and social or religious reasons but had a job, farm, enterprise or other family enterprise to return to. Also included are those on temporary lay-off with pay who would definitely be called back to work.

- **Unemployed**

Unemployed refers to those who do not have a job but are interested to work. There are two groups of unemployed that is the actively unemployed and inactively unemployed.

- **Outside Labour Force**

All persons not classified as employed or unemployed as stated above are classified as outside labour force. Includes housewives, students (including those going for further studies), retired, disabled persons and those not interested in looking for a job.

- **Labour Force Participation Rate**

The economic activity of a population depends on the demographic characteristics of that population. The proportion of economically active population, therefore, differs between sub-groups of that population. These variations are measured by specific activity rates termed as labour force participation rate. **Labour force participation rate** is defined as the ratio of the labour force to the working age population (15 to 64 years), expressed as percentage.

- **Unemployment rate** is the proportion of unemployed population to the total population in labour force. This rate measures the percentage of unemployed population in the labour force.

## Seasonally adjusted

Malaysian economic time series data are affected by major religious festivals such as the Eid-ul Fitr, the Chinese New Year and the Deepavali. The major festivals in this country are usually related to the religious activities and such as, the dates are determined by the respective religious calendar. The dates of these holidays are not in line with the Gregorian calendar. Hence, they tend to move along the Gregorian calendar and has strong seasonal influence on many economic time series data.

Since these non-fixed holidays have large impact on the time series data, they need to be taken into account when performing seasonal adjustment process so as to avoid confusion in seasonally adjusted data and trend estimates. Furthermore, the presence of the non-fixed holidays effects may complicate the interpretation of the data.

Seasonal adjustment is a process of removing the estimated effects of normal seasonal variation from the original series so that the effects of other influences on the series may be more clearly recognized.

Seasonal adjustment can be derived by various methods and the results may vary according to the



procedure adopted. The approach used for seasonal adjustment in Malaysia is the **Seasonal Adjustment for Malaysia (SEAM)**.

SEAM is a procedure to remove moving holiday effect on the selected Malaysian economic time series data by introducing steps that can be used to overcome the limitations of the existing seasonal adjustment procedure. To apply the SEAM procedure, the X-ARIMA program in Statistical Analysis Software (SAS) is used.

This seasonal adjusted rate will be revised when a complete 12 months time series for the particular year are obtained.

### **Population Benchmarks**

Population by characteristics of age group, ethnicity and state were used as benchmarks to produce labour statistics.

Starting with the monthly release of the Principal Statistics of Labour Force, Malaysia, January 2016, the principal statistics of labour is estimated based on the current population estimates as compared to the previous series which used population projections based on the Population and Housing Census of Malaysia, 2010. This rebase is to obtain statistics that is more consistent with current population structure.

[Free Download](#)

**Released By:**

**DATO' SRI DR. MOHD UZIR MAHIDIN**  
**CHIEF STATISTICIAN MALAYSIA**  
**DEPARTMENT OF STATISTICS, MALAYSIA**



**DrUzir\_Mahidin**



**Dr\_Uzir**

**#myHariBulan# #myBulan# #myTahun#**

**Contact person:**

Mohd Yusrizal bin Ab. Razak  
Public Relation Officer  
Strategic Communication and International Division  
Department of Statistics, Malaysia  
**Tel** : +603-8885 7942  
**Fax** : +603-8888 9248  
**Email** : yusrizal.razak[at]dosm.gov.my

**Contact person:**

Baharudin Mohamad  
Public Relation Officer  
Strategic Communication and International Division  
Department of Statistics Malaysia  
Tel : +603-8090 4681  
Fax : +603-8888 9248  
Email : baharudin[at]dosm.gov.my

**Copyright ©2026 Department of Statistics Malaysia Official Portal. All Rights Reserved.**