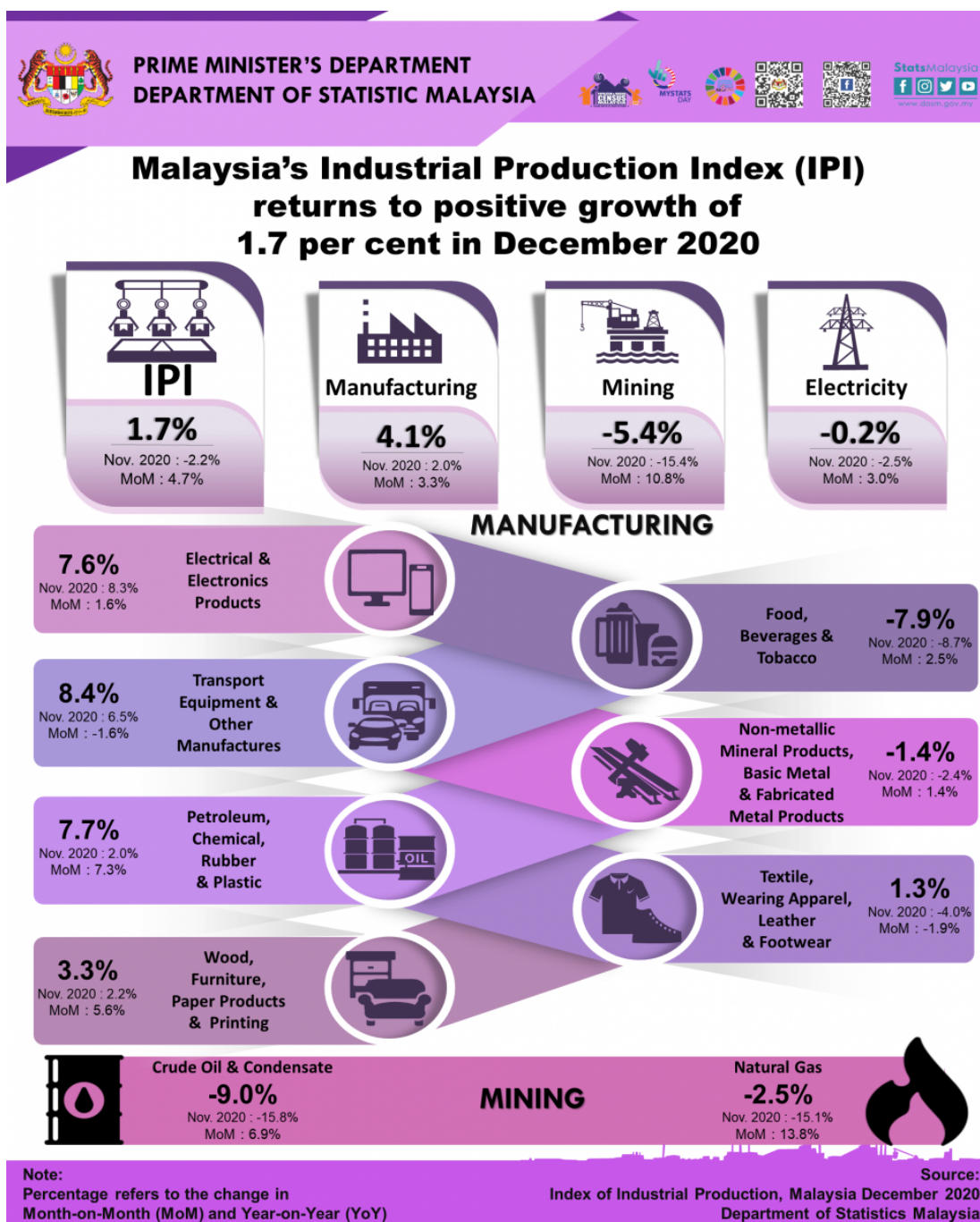




MINISTRY OF ECONOMY  
DEPARTMENT OF STATISTICS MALAYSIA

## INDEX OF INDUSTRIAL PRODUCTION, MALAYSIA DECEMBER 2020



**Malaysia's Industrial Production Index (IPI) returns to positive growth of 1.7 per cent in December 2020**

The Industrial Production Index (IPI) grew **1.7 per cent** in December 2020 as compared to the same month of the previous year. The growth of IPI in December 2020 was driven by the Manufacturing index with **4.1 per cent**. Meanwhile, Mining and Electricity index dropped **5.4 per cent** and **0.2 per cent** respectively.

The Manufacturing sector output based on year-on-year comparison rose by **4.1 per cent** in December 2020 after recording a growth of 2.0 per cent in November 2020. The major sub-sectors contributing to the growth in Manufacturing sector in December 2020 were Transport Equipment & Other Manufactures (**8.4%**), Petroleum, Chemical, Rubber & Plastic Products (**7.7%**) and Electrical & Electronics Products (**7.6%**).

The Mining sector output dropped **5.4 per cent** in December 2020 as compared to the same period of the previous year. The deterioration was due to the decrease in Crude Oil & Condensate index (**-9.0%**) and Natural Gas index (**-2.5%**).

The Electricity sector output edged down **0.2 per cent** in December 2020 as compared to the same month of the previous year.

The IPI for the fourth quarter 2020 fell **0.3 per cent** as compared to the same period of the previous year. The decrease was largely due to the contraction in Mining (**-10.5%**) and Electricity (**-0.6%**). Meanwhile, Manufacturing sector recorded an increase of **2.8 per cent**.

The IPI for overall 2020 recorded a decline of **4.2 per cent** as compared to the previous year. The drop was influenced by all indices; Mining index (**-9.7%**), Electricity index (**-3.7%**) and Manufacturing index (**-2.7%**).

The full publication of the Industrial Production Index, December 2020 can be downloaded through [eStatistik](#) portal.

**\*Notes:**

Data for December 2020 is **provisional**. The data will be updated based on the latest available figures and subsequently published in the January 2021 publication.

**Released By:**

**DATO' SRI DR. MOHD UZIR MAHIDIN**  
**CHIEF STATISTICIAN MALAYSIA**  
**DEPARTMENT OF STATISTICS, MALAYSIA**

 [DrUzir\\_Mahidin](#)   [Dr\\_Uzir](#)

**#myHariBulan# #myBulan# #myTahun#**

**Contact person:**

Mohd Yusrizal Ab Razak  
Public Relation Officer  
Strategic Communication and International Division  
Department of Statistics, Malaysia

**Tel :** +603-8885 7942

**Fax :** +603-8888 9248

**E-mail :** [yusrizal.razak\[at\]dosm.gov.my](mailto:yusrizal.razak[at]dosm.gov.my)

**Contact person:**

Baharudin Mohamad  
Public Relation Officer  
Strategic Communication and International Division  
Department of Statistics Malaysia  
Tel : +603-8090 4681  
Fax : +603-8888 9248  
Email : baharudin[at]dosm.gov.my

**Copyright ©2026 Department of Statistics Malaysia Official Portal. All Rights Reserved.**