

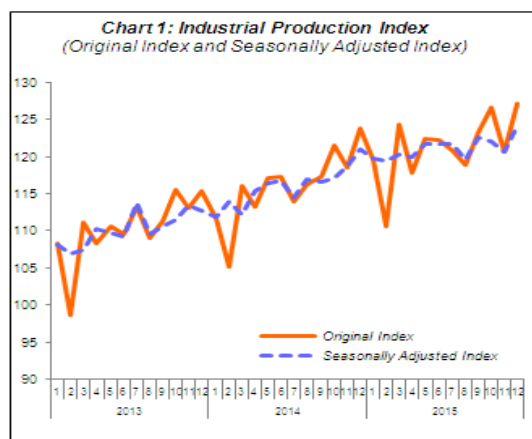


MINISTRY OF ECONOMY  
DEPARTMENT OF STATISTICS MALAYSIA

## INDEX OF INDUSTRIAL PRODUCTION, MALAYSIA DECEMBER 2015

### HIGHLIGHTS

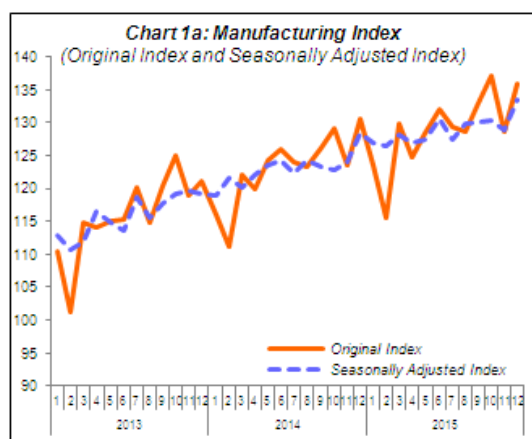
Sector	Seasonally Adjusted Index		Original Index	
	Index	% Changes Month-on-Month	Index	% Changes Year-on-Year
<b>IPI</b>	124.1	2.8	127.2	2.7
<b>Mining Index</b>	102.8	2.5	107.8	-1.5
<b>Manufacturing Index</b>	133.6	3.6	135.9	4.0
<b>Electricity Index</b>	126.1	3.5	124.4	5.6



### PERFORMANCE OF INDUSTRIAL PRODUCTION INDEX

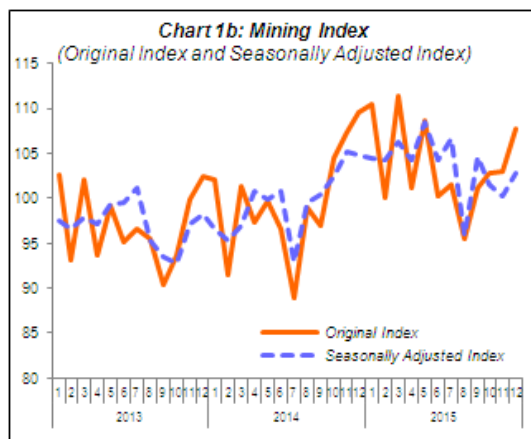
The Industrial Production Index (IPI) rose by 2.7% in December 2015 as compared to the same month of the previous year. The increase in December 2015 was supported by positive growth in Manufacturing index (4.0%) and Electricity index (5.6%). However, the Mining index recorded a decrease of 1.5%. The IPI in November 2015 remained unchanged at 1.8% year-on-year.

In seasonally adjusted terms, the IPI in December 2015 edged up 2.8% month-on-month following an increase in all indices: Manufacturing (3.6%), Mining (2.5%) and Electricity (3.5%).



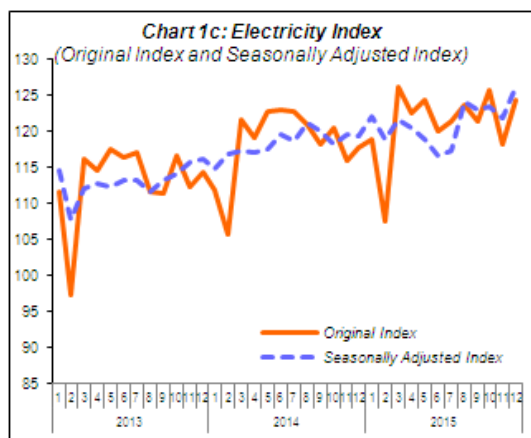
### PERFORMANCE OF MANUFACTURING SECTOR

Year-on-year, Manufacturing sector output grew 4.0% in December 2015 after registering a growth of 4.1% in November 2015. The major sub-sectors which recorded an expansion in December 2015 were: Electrical and Electronics Products (8.6%); Petroleum, Chemical, Rubber and Plastic Products (1.6%) and Non-metallic Mineral Products, Basic Metal and Fabricated Metal Products (5.0%). On a seasonally adjusted month-on-month, Manufacturing output recorded an increase of 3.6% in December 2015.



### **PERFORMANCE OF MINING SECTOR**

The Mining sector output fell by 1.5% in December 2015 as compared to the same month in 2014 due to the decrease in Natural Gas index (3.0%) and Crude Oil index (0.3%). On a seasonally adjusted terms, output for the Mining sector increased 2.5% as compared to November 2015.



### **PERFORMANCE OF ELECTRICITY SECTOR**

The Electricity sector output grew 5.6% in December 2015 on yearly basis. On a seasonally adjusted terms, Electricity sector output increased 3.5% as compared to the previous month.

### **PERFORMANCE OF INDUSTRIAL PRODUCTION INDEX FOR THE FOURTH QUARTER 2015**

Malaysia's Industrial Production Index for the fourth quarter 2015 expanded by 2.9%, compared with the same quarter of the previous year. The expansion was supported by the increase in the index of Manufacturing (4.8%) and Electricity (4.0%). However, the Mining index posted a decrease of 2.4%.

Sector	Q3 2015	Q4 2015	% Changes	
			Q4 2015/ Q4 2014	Q4 2015/ Q3 2015
<b>IPI</b>	121.0	124.8	2.9	3.2
<b>Mining Index</b>	99.4	104.5	-2.4	5.2
<b>Manufacturing Index</b>	130.4	133.9	4.8	2.7
<b>Electricity Index</b>	122.2	122.8	4.0	0.6

**\* Notes:**

Data for December 2015 is **provisional**. The data will be updated based on the latest available figures and subsequently published in the January 2016 publication.

**THE OFFICE OF CHIEF STATISTICIAN MALAYSIA**  
**DEPARTMENT OF STATISTICS MALAYSIA**  
**11 FEBRUARY 2016**

**Contact person:**

Ho Mei Kei  
Public Relation Officer  
Corporate and User Services Division  
Department of Statistics, Malaysia

Tel : +603-8885 7942  
Fax : +603-8888 9248  
Email : mkho@stats.gov.my

**Contact person:**

Baharudin Mohamad  
Public Relation Officer  
Strategic Communication and International Division  
Department of Statistics Malaysia  
Tel : +603-8090 4681  
Fax : +603-8888 9248  
Email : baharudin[at]dosm.gov.my

**Copyright ©2026 Department of Statistics Malaysia Official Portal. All Rights Reserved.**