



MINISTRY OF ECONOMY
DEPARTMENT OF STATISTICS MALAYSIA

DEMOGRAPHIC STATISTICS FOURTH QUARTER 2019, MALAYSIA

Department of Statistics Malaysia
Ministry of Economic Affairs

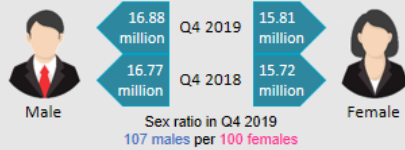
StatsMalaysia
www.dosm.gov.my

DEMOGRAPHIC STATISTICS, MALAYSIA
FOURTH QUARTER 2019

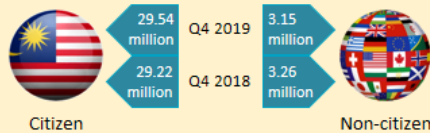
POPULATION

Malaysia's population for the **fourth quarter 2019** was estimated at **32.68 million**, **increased by 0.6 per cent** as compared to the fourth quarter 2018 (32.48 million).

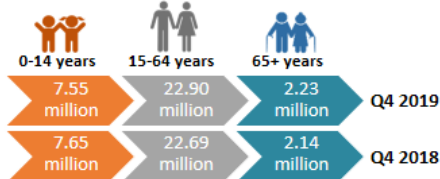
Population by sex



Population by citizenship



Population by age group



LIVE BIRTHS

124,240 live births were recorded in the **fourth quarter 2019**, **decreased by 2.3 per cent** as compared to the fourth quarter 2018 (127,168).



DEATHS

43,623 deaths were recorded in the **fourth quarter 2019**, **increased by 0.8 per cent** as compared to the fourth quarter 2018 (43,264).

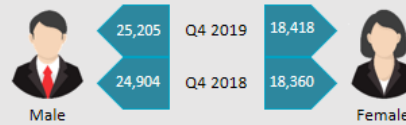
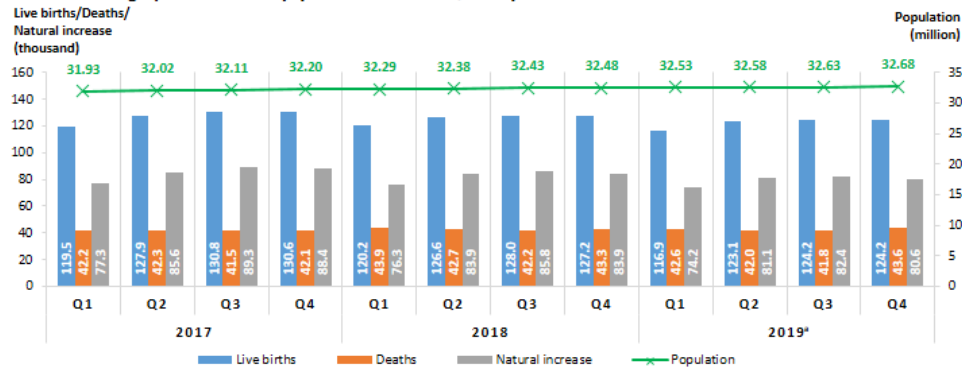


Chart 1: Demographic statistics by quarter 2017–2019*, Malaysia



Source: Demographic Statistics Fourth Quarter 2019, Malaysia
Department of Statistics Malaysia

Exhibit 1: Demographic statistics by state, fourth quarter 2019^a, Malaysia

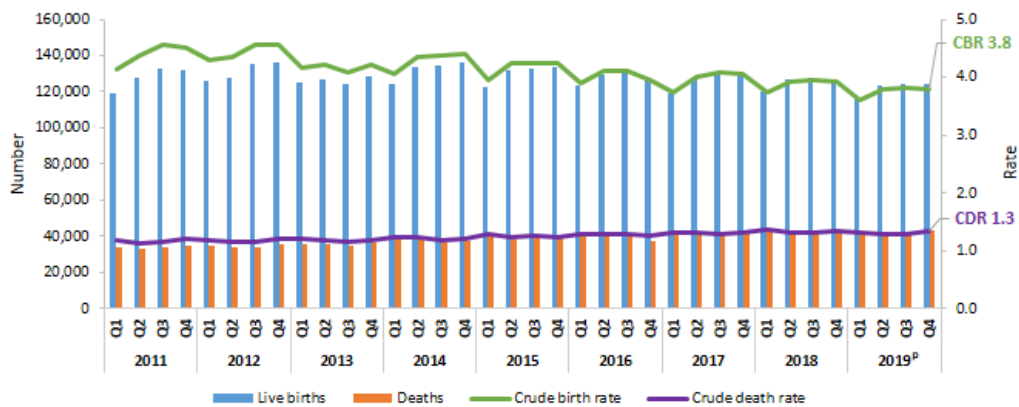
State	Population	Live Births	Deaths
Johor	3,772.3*	15,405	5,466
Negeri Sembilan	1,134.0*	4,407	1,791
Pulau Pinang	1,780.6*	5,255	2,805
Terengganu	1,254.6*	6,955	1,968
Kedah	2,189.5*	8,813	3,724
Pahang	1,679.7*	6,455	2,341
Sabah	3,906.1*	13,675	2,841
W.P. Kuala Lumpur	1,776.1*	6,612	2,433
Kelantan	1,898.4*	9,534	2,915
Perak	2,516.5*	8,366	4,821
Sarawak	2,823.4*	8,887	3,480
W.P. Labuan	99.5*	435	44
Melaka	934.8*	3,497	1,418
Perlis	254.8*	1,056	473
Selangor	6,555.6*	24,355	7,055
W.P. Putrajaya	107.1*	533	48

Legend: Population (people icon), Live Births (baby icon), Deaths (casket icon). Note: * thousand

Table 1: Number and percentage change of live births and deaths, 2018 & 2019^a, Malaysia

Indicator		2018		2019 ^a	
		Number	Year-on-year change (%)	Number	Year-on-year change (%)
Live births	October	44,045	-2.1	42,856	-2.7
	November	41,790	-3.4	39,535	-5.4
	December	41,333	-2.3	41,849	1.2
	October-December	127,168	-2.6	124,240	-2.3
Deaths	October	13,823	-2.9	13,914	0.7
	November	14,144	6.3	14,306	1.1
	December	15,297	4.8	15,403	0.7
	October-December	43,264	2.7	43,623	0.8

Chart 2: Live births and deaths (number and rate) by quarter, 2011–2019^a, Malaysia



Notes:
^a Preliminary.
^{a*} The number of live births and deaths refer to preliminary figures. Total population refers to estimates.
^a Quarterly period: Q1=January–March; Q2=April–June; Q3=July–September; Q4=October–December.
^a The difference is due to rounding.

Released By:

**DATO' SRI DR. MOHD UZIR MAHIDIN
CHIEF STATISTICIAN MALAYSIA
DEPARTMENT OF STATISTICS, MALAYSIA**

 DrUzir_Mahidin   Dr_Uzir

#myHariBulan# #myBulan# #myTahun#

Contact person:

Mohd Yusrizal Ab Razak
Public Relation Officer
Strategic Communication and International Division
Department of Statistics, Malaysia
Tel : +603-8885 7942
Fax : +603-8888 9248
Email : yusrizal.razak[at]dosm.gov.my

Contact person:

Baharudin Mohamad
Public Relation Officer
Strategic Communication and International Division
Department of Statistics Malaysia
Tel : +603-8090 4681
Fax : +603-8888 9248
Email : baharudin[at]dosm.gov.my

Copyright ©2025 Department of Statistics Malaysia Official Portal. All Rights Reserved.