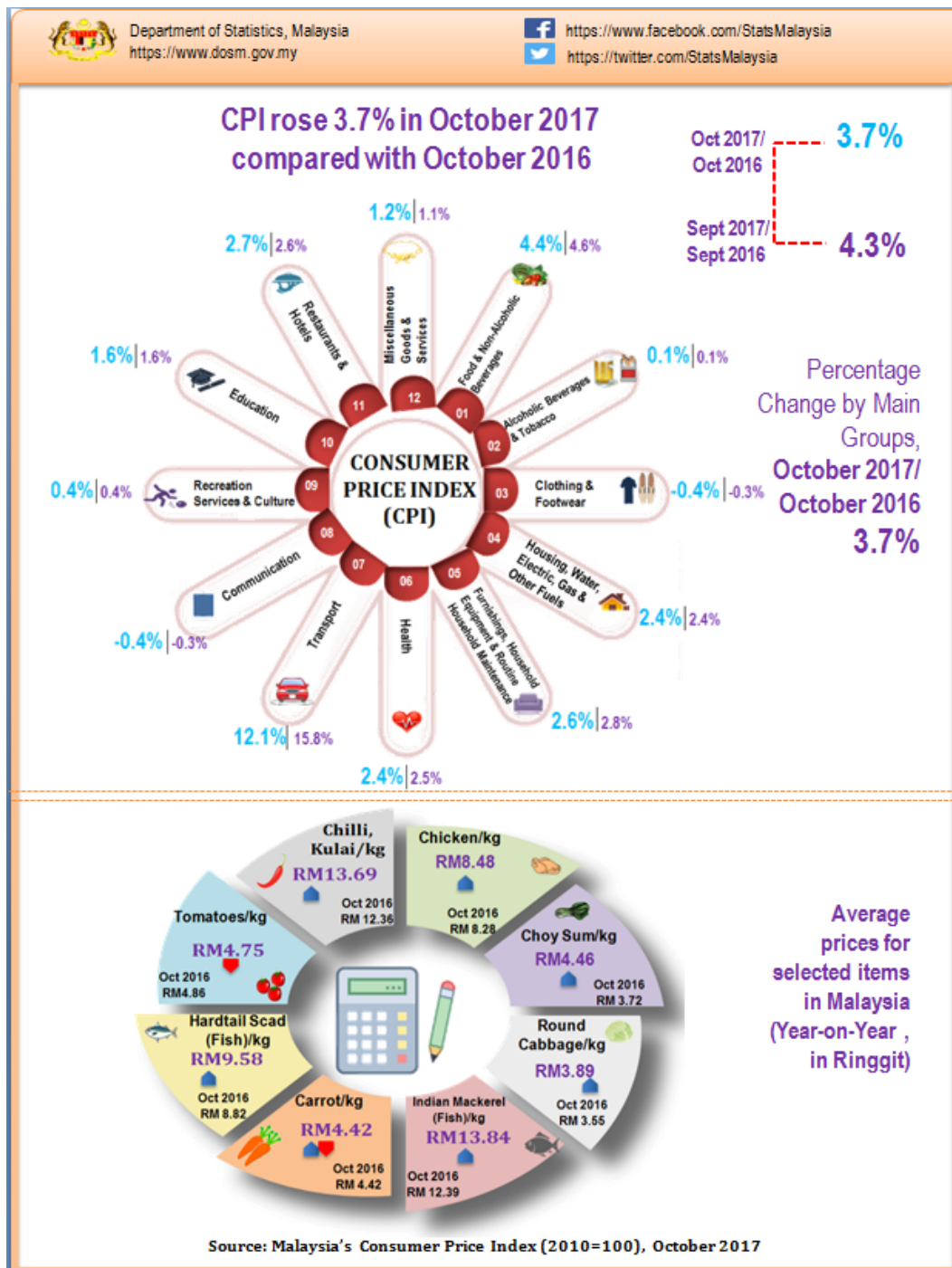




MINISTRY OF ECONOMY
DEPARTMENT OF STATISTICS MALAYSIA

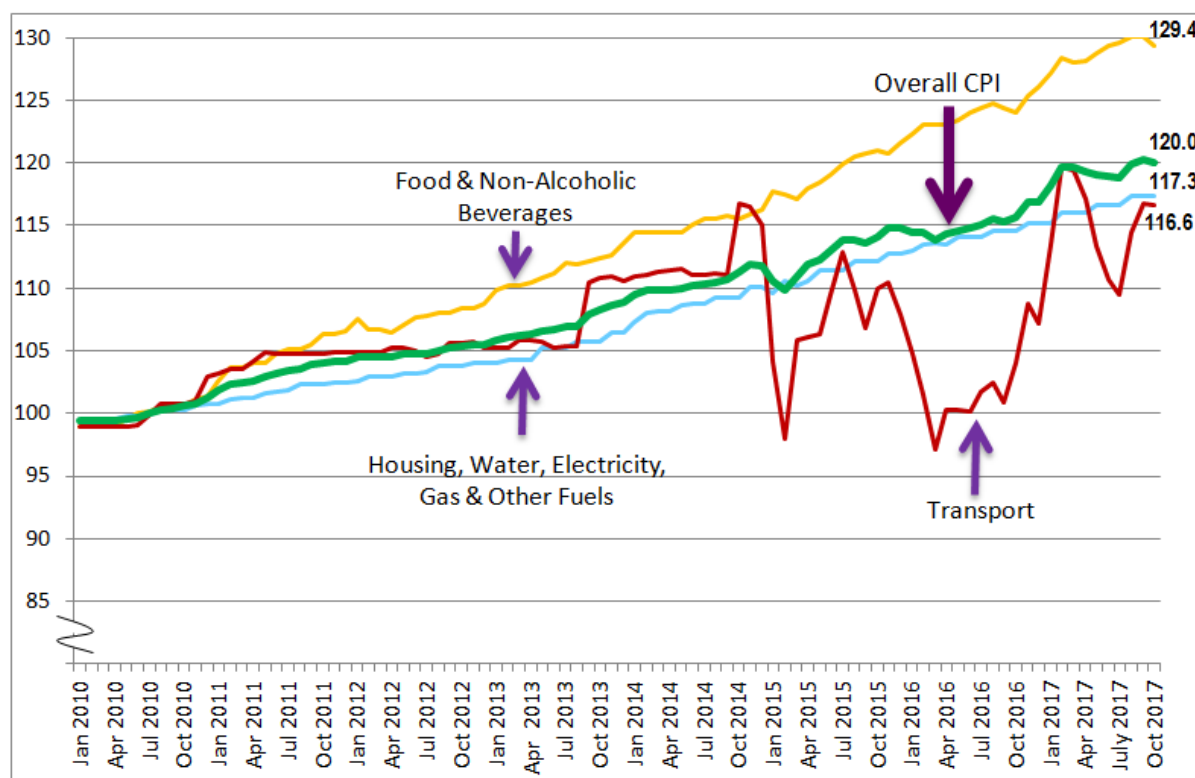
CONSUMER PRICE INDEX MALAYSIA OCTOBER 2017



SUMMARY OF FINDINGS

The overall index for CPI rose by 3.7 per cent to 120.0 in October 2017 from 115.7 in the corresponding month of the preceding year. Among the major groups which recorded increases were the indices for Transport (+12.1 per cent), Food & Non-Alcoholic Beverages (+4.4 per cent), Restaurants and Hotels (+2.7 per cent), Furnishings, Household Equipment & Routine Household Maintenance (+2.6 per cent), Health (+2.4 per cent) and Housing, Water, Electricity, Gas & Other Fuels (+2.4 per cent). (Table 1)

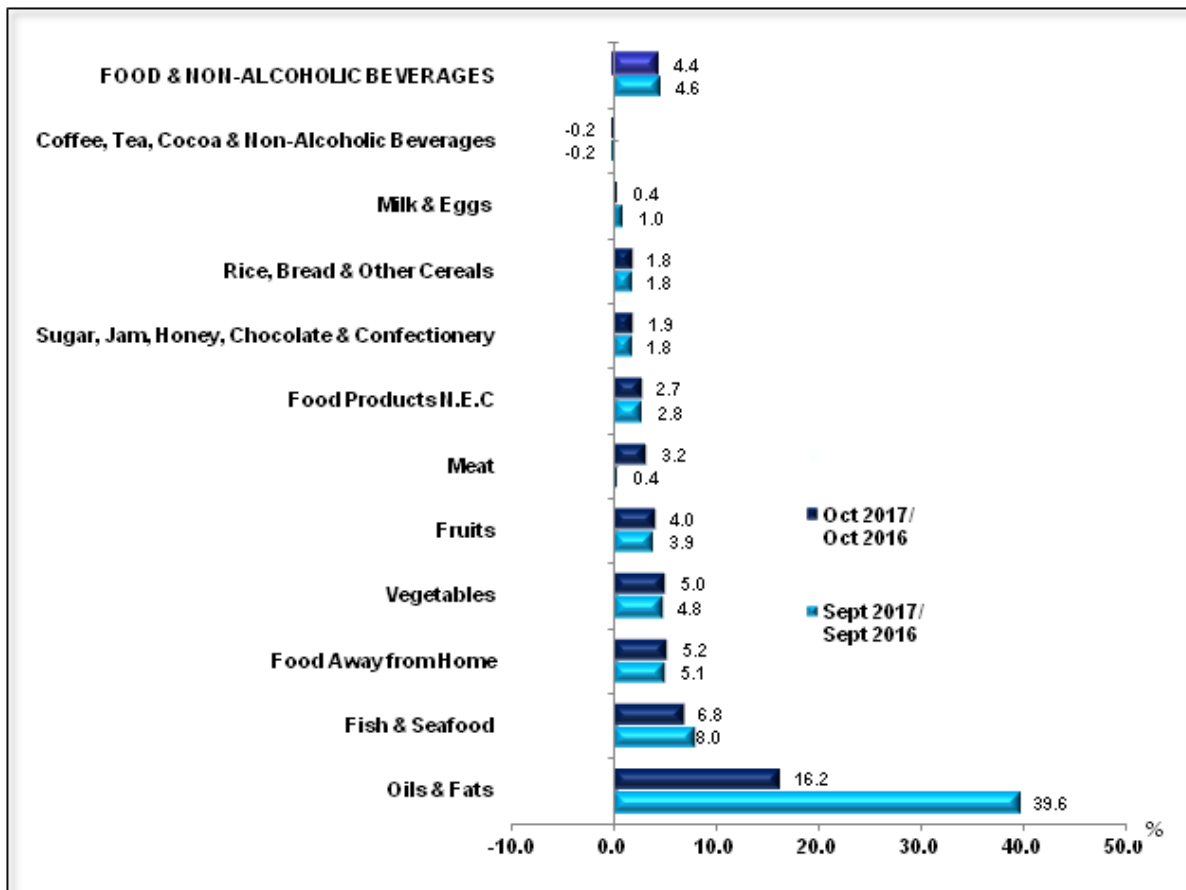
Chart 1: Consumer Price Index: Index Number for Overall and Selected Main Groups



The index of transport group showed a significant increase of 12.1 per cent on a year-on-year basis in October 2017, after rising 15.8 per cent in September 2017. The average price of 1 litre of RON95 petrol was RM2.18 in October 2017 compared to RM1.80 in October 2016. As for RON97, the average price increased to RM2.48 in October 2017 compared to RM2.15 in October 2016. Fuels & lubricants for personal transport equipment accounted for 7.8 per cent of the CPI weights.

The index for Food & Non-Alcoholic Beverages which accounted 30.2 per cent in the CPI weights, increased 4.4 per cent in October 2017. The increase was driven by food sub-group index which comprised of **Oils and Fats (+16.2 per cent)**, **Fish & Seafood (+6.8 per cent)**, **Vegetables (+5.0 per cent)**, **Fruits (+4.0 per cent)** and **Meat (+3.2 per cent)**. As for Food Away From Home index, it continued to rise in October 2017, an increase of 5.2 per cent.

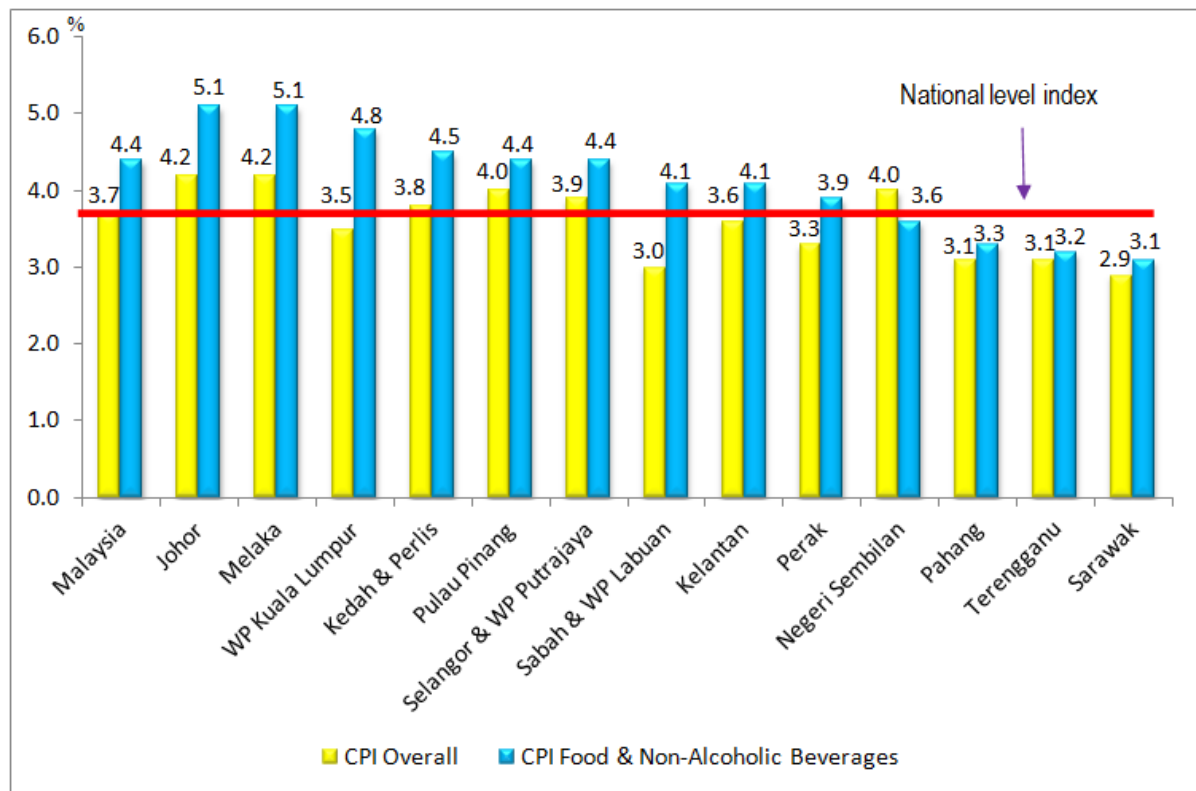
Chart 2: Consumer Price Index: Annual Percentage Change for Food & Non-Alcoholic Beverages



Among the index of food items which recorded notable increases in October 2017 compared to the same period of last year were **Cooking Oil (+19.7 per cent)**, **Spinach (+16.1 per cent)**, **Choy Sum (+14.0 per cent)**, **Cuttlefish (+8.7 per cent)**, **Round Cabbage (+8.5 per cent)**, **Indian Mackerel (Fish)(+8.0 per cent)**, **Hardtail Scad (Fish)(+5.9 per cent)**, **Spanish Mackerel (Fish) (+5.0 per cent)** and **Prawn (+4.4 per cent)**. Meanwhile, decreases were registered in the index of some food items such as **Tomatoes (-3.5 per cent)** and **Hen's Eggs (-1.3 per cent)**.

The increase in the index for Food & Non-Alcoholic Beverages was reflected in most states in Malaysia especially those in highly urbanised states such as Wilayah Persekutuan Kuala Lumpur, Selangor & Wilayah Persekutuan Putrajaya, Pulau Pinang, Johor and Melaka.

Chart 3: Consumer Price Index: Annual Percentage Change for Food & Non-Alcoholic Beverages by State



Four states recorded higher increases for Food & Non-Alcoholic Beverages index above the national level index for October 2017 compared with the corresponding month in 2016. The index for Food & Non-Alcoholic Beverages rose 5.1 per cent in Johor, 5.1 per cent in Melaka, 4.8 per cent in Wilayah Persekutuan Kuala Lumpur and 4.5 per cent in Kedah & Perlis.

On a monthly basis, the index for Food & Non-Alcoholic Beverages decreased to 129.4 in October 2017 as compared to September 2017. Meanwhile, the index for Non-Food decreased 0.1 per cent in October 2017 compared with the preceding month.

Based on a seasonally adjusted term, the overall CPI for October 2017 decreased 0.2 per cent as compared to September 2017. (Table 1)

Core inflation rose 2.3 per cent in October 2017 compared with the same month of the previous year. Among the major groups which influenced the higher core rate were price increases of Food & Non-Alcoholic Beverages (+4.0 per cent), Housing, Water, Electricity, Gas & Other Fuels (+2.8 per cent), Restaurants & Hotels (+2.7 per cent), Furnishings, Household Equipment & Routine Household Maintenance (+2.6 per cent), Health (+2.4 per cent) and Transport (+2.1 per cent). (Table 3)

CPI changes for the period January - October 2017/2016

CPI for the period January to October 2017 registered an increase of 4.0 per cent compared with the same period last year. The index for Food & Non-Alcoholic Beverages was the main contributor to the rise in CPI for the period January to October 2017, registering an increase of 4.3 per cent. The increase was contributed by the index for Food Away From Home (+4.6 per cent) and Food At Home (+4.3 per cent). While, the index for Coffee, Tea, Cocoa & Non-Alcoholic Beverages decreased 0.4 per cent. Among the subgroups of Food At Home which showed significant increases during this period as shown in Table 2 were **Oils & Fats (+36.7 per cent)**, **Fish & Seafood (+6.7 per cent)**, **Vegetables (+4.3 per cent)**, **Fruits (+3.3 per cent)** and **Meat (+3.0 per cent)**.

Other major groups which contributed to the rise in CPI during this period were Transport (+13.6 per cent), Health (+2.6 per cent), Restaurants & Hotels (+2.5 per cent), Recreation Services & Culture (+2.2 per cent) and Housing, Water, Electricity, Gas & Other Fuels (+2.2 per cent).

Core inflation, which excludes most volatile items of fresh food, as well as administered prices of goods and services recorded changes ranging from 2.3 per cent to 2.6 per cent in the period January to October 2017 compared with the same period of the previous year.

Table 1: Consumer Price Index for Main Groups, Malaysia (2010=100)

Main Group	Wt	Index		Year-on-Year Percentage Change		Month-on-Month Percentage Change		Seasonally Adjusted Index	
		Oct 2017	Sept 2017/ Sept 2016	Oct 2017/ Oct 2016	Jan-Oct 2017/2016	Sept 2017/ Aug 2017	Oct 2017/ Sept 2017	Oct 2017	% Change Oct 2017/ Sept 2017
TOTAL	100.0	120.0	4.3	3.7	4.0	0.3	-0.2	120.0	-0.2
Food & Non-Alcoholic Beverages	30.2	129.4	4.6	4.4	4.3	0.0	-0.5	129.7	-0.3
Alcoholic Beverages & Tobacco	2.9	165.6	0.1	0.1	0.2	0.0	0.1	165.6	0.1
Clothing and Footwear	3.3	98.0	-0.3	-0.4	-0.4	0.2	-0.1	98.0	-0.1
Housing, Water, Electricity, Gas & Other Fuels	23.8	117.3	2.4	2.4	2.2	0.0	0.0	117.6	0.3
Furnishings, Household Equipment & Routine Household Maintenance	3.8	115.2	2.8	2.6	2.1	0.1	0.0	115.2	0.0
Health	1.7	121.6	2.5	2.4	2.6	0.2	0.1	121.6	0.1
Transport	13.7	116.6	15.8	12.1	13.6	2.0	-0.2	116.6	-0.2
Communication	5.2	97.6	-0.3	-0.4	-0.3	-0.1	-0.1	97.6	-0.1
Recreation Services & Culture	4.9	111.6	0.4	0.4	2.2	0.0	0.1	111.6	0.1
Education	1.1	116.8	1.6	1.6	1.7	0.0	0.0	117.2	0.2
Restaurants and Hotels	2.9	129.1	2.6	2.7	2.5	0.1	0.1	129.1	0.1
Miscellaneous Goods & Services	6.5	114.5	1.1	1.2	1.3	0.2	0.1	114.5	0.1
Non-Food	69.8	115.9	4.2	3.4	3.9	0.5	-0.1	115.9	-0.1

Table 2: Consumer Price Index for Sub-Groups of Food and Non-Alcoholic Beverages, Malaysia (2010=100)

Sub-groups	Wt	Index	Year-on-Year Percentage Change			Month-on-Month Percentage Change	
		Oct 2017	Sept 2017/ Sept 2016	Oct 2017/ Oct 2016	Jan-Oct 2017/2016	Sept 2017/ Aug 2017	Oct 2017/ Sept 2017
Food & Non-Alcoholic Beverages	30.2	129.4	4.6	4.4	4.3	0.0	-0.5
Food	29.0	130.2	4.8	4.5	4.4	0.0	-0.6
Food At Home	17.9	128.5	4.6	4.1	4.3	-0.3	-1.1
Rice, Bread & Other Cereals	3.7	110.6	1.8	1.8	1.3	0.0	0.0
Meat	2.8	125.1	0.4	3.2	3.0	-3.7	-0.6
Fish & Seafood	4.3	148.5	8.0	6.8	6.7	0.1	-0.9
Milk & Eggs	1.6	124.9	1.0	0.4	-0.2	1.9	-0.9
Oils & Fats	0.5	118.8	39.6	16.2	36.7	0.2	-16.7
Fruits	1.1	131.5	3.9	4.0	3.3	0.6	-0.4
Vegetables	2.4	129.4	4.8	5.0	4.3	0.2	-0.5
Sugar, Jam, Honey, Choc. & Confectionery	0.6	137.1	1.8	1.9	1.4	0.0	0.1
Food Products n.e.c.	0.9	131.5	2.8	2.7	4.0	0.2	0.1
Food Away From Home	11.1	133.1	5.1	5.2	4.6	0.5	0.2
Coffee, Tea, Cocoa & Non- Alcoholic Beverages	1.2	111.6	-0.2	-0.2	-0.4	0.0	0.0

Table 3: Headline CPI and Core Index by Main Groups, Malaysia (2010=100)

Main Group	Wt	HEADLINE CPI			CORE INDEX	
		Index Oct 2017	Percentage Change		Core Index ⁽¹⁾ Wt.	Percentage Change
			Oct 2017/ Sept 2017	Oct 2017/ Oct 2016		
TOTAL	100.0	120.0	-0.2	3.7	100.0	2.3
Food & Non-Alcoholic Beverages	30.2	129.4	-0.5	4.4	26.7	4.0
Alcoholic Beverages & Tobacco	2.9	165.6	0.1	0.1	-	-
Clothing and Footwear	3.3	98.0	-0.1	-0.4	4.5	-0.4
Housing, Water, Electricity, Gas & Other Fuels	23.8	117.3	0.0	2.4	26.6	2.8
Furnishings, Household Equipment & Routine Household Maintenance	3.8	115.2	0.0	2.6	5.2	2.6
Health	1.7	121.6	0.1	2.4	2.3	2.4
Transport	13.7	116.6	-0.2	12.1	6.7	2.1
Communication	5.2	97.6	-0.1	-0.4	7.1	-0.4
Recreation Services & Culture	4.9	111.6	0.1	0.4	6.6	0.4
Education	1.1	116.8	0.0	1.6	1.5	1.6
Restaurants and Hotels	2.9	129.1	0.1	2.7	3.9	2.7
Miscellaneous Goods & Services	6.5	114.5	0.1	1.2	8.9	1.2

Note: ⁽¹⁾ Including cooking oil following the restructuring of Cooking Oil Price Stabilisation Scheme starting from 1 November 2016

Average Price for Selected Items in Malaysia, August 2017 (RM)

Num.	Selected Items	Unit	Prices					Percentage Changes	
			Oct 2017	Sept 2017	Oct 2016	Oct 2017/ Sept 2017	Oct 2017/ Oct 2016		
1	Spinach	Kg	4.38	4.28	3.91	2.3	12.0		
2	Ladyfinger	Kg	6.91	6.98	6.45	-1.0	7.1		
3	Broccoli	Kg	10.96	10.73	8.90	2.1	23.1		
4	Chilli (Burung/padi) Import	200g	2.50	2.47	2.17	1.2	15.2		
5	Green Chilli	Kg	10.25	10.25	11.13	0.0	-7.9		
6	Chilli (Kulai)	Kg	13.69	14.51	12.36	-5.7	10.8		
7	Red Chilli (Tempatan/minyak)	Kg	12.22	12.79	11.00	-4.5	11.1		
8	Long Beans	Kg	5.58	5.99	5.38	-6.8	3.7		
9	French Beans	Kg	7.76	8.09	7.80	-4.1	-0.5		
10	Round Cabbage	Kg	3.89	3.82	3.55	1.8	9.6		
11	Cauliflower	Kg	7.56	7.71	7.75	-1.9	-2.5		
12	Carrot	Kg	4.42	4.47	4.42	-1.1	0.0		
13	Choy Sum	Kg	4.46	4.41	3.72	1.1	19.9		
14	Tomatoes	Kg	4.75	4.98	4.86	-4.6	-2.3		
15	Brinjals	Kg	6.16	6.11	5.62	0.8	9.6		
16	Cucumber	Kg	2.99	3.09	2.79	-3.2	7.2		
17	Apple Fuji	Each	1.69	1.71	1.68	-1.2	0.6		
18	Apple (Green Skin)	Each	1.13	1.13	1.11	0.0	1.8		
19	Apple (Red Skin, Gala)	Each	1.23	1.23	1.19	0.0	3.4		
20	Papaya	Kg	3.10	3.13	3.27	-1.0	-5.2		
21	Pineapple	Kg	3.46	3.40	3.26	1.8	6.1		
22	Pisang Emas (Banana)	Kg	3.89	3.87	3.75	0.5	3.7		
23	Pisang Rastali (Banana)	Kg	3.77	3.78	3.68	-0.3	2.4		
24	Pisang Berangan (Banana)	Kg	4.06	4.06	4.03	0.0	0.7		
25	Watermelon	Kg	2.62	2.64	2.54	-0.8	3.1		
26	Coconut Grated	Kg	7.18	7.22	6.13	-0.6	17.1		
27	Fresh Coconut Milk	Kg	10.28	10.26	8.65	0.2	18.8		
28	Hen's Egg Grade A	10 each	3.79	3.93	3.82	-3.6	-0.8		
29	Hen's Egg Grade B	10 each	3.66	3.81	3.72	-3.9	-1.6		
30	Hen's Egg Grade C	10 each	3.49	3.61	3.53	-3.3	-1.1		
31	Black Pomfret (Fish)	Kg	24.08	24.23	22.71	-0.6	6.0		
32	Hardtail Scad (Fish)	Kg	9.58	9.65	8.82	-0.7	8.6		
33	Indian Mackerel (Fish)	Kg	13.84	14.17	12.39	-2.3	11.7		
34	Threadfin Bream (Fish)	Kg	12.97	13.20	11.76	-1.7	10.3		
35	Red Snapper (Fish)	Kg	27.87	27.84	26.87	0.1	3.7		
36	Spanish Mackerel (Fish)	Kg	29.44	29.73	26.72	-1.0	10.2		
37	Longtail Tuna (Fish)	Kg	11.60	11.83	10.36	-1.9	12.0		
38	Chicken	Kg	8.48	8.60	8.28	-1.4	2.4		
39	Beef	Kg	29.84	29.83	27.98	0.0	6.6		
40	Prawns	Kg	37.88	38.50	36.52	-1.6	3.7		
41	Cuttlefish Fresh	Kg	21.39	21.36	19.07	0.1	12.2		
42	Nasi Lemak	Each	2.55	2.55	2.47	0.0	3.2		
43	Roti Canai	Each	1.11	1.11	1.08	0.0	2.8		
44	Coffee Powder (250 gm)	250 gm	4.55	4.54	4.32	0.2	5.3		
45	Drinking Water (500 ml)	500 ml	0.75	0.75	0.75	0.0	0.0		
46	Satay	Each	0.70	0.70	0.65	0.0	7.7		
47	Chicken Rice	Plate	5.03	5.02	4.80	0.2	4.8		
48	Teh Tarik	Cup	1.54	1.54	1.49	0.0	3.4		
49	Teh-O	Cup	1.24	1.24	1.20	0.0	3.3		
50	Milo	Cup	1.88	1.88	1.81	0.0	3.9		

Released By:

DATO' SRI DR. MOHD UZIR MAHIDIN
CHIEF STATISTICIAN MALAYSIA
DEPARTMENT OF STATISTICS, MALAYSIA
#myHariBulan# #myBulan# #myTahun#

Contact person:

Ho Mei Kei
Public Relation Officer
Corporate and User Services Division
Department of Statistics, Malaysia
Tel : +603-8885 7942
Fax : +603-8888 9248
Email : mkho[at]stats.gov.my

Contact person:

Baharudin Mohamad
Public Relation Officer
Strategic Communication and International Division
Department of Statistics Malaysia
Tel : +603-8090 4681
Fax : +603-8888 9248
Email : baharudin[at]dosm.gov.my

Copyright ©2025 Department of Statistics Malaysia Official Portal. All Rights Reserved.