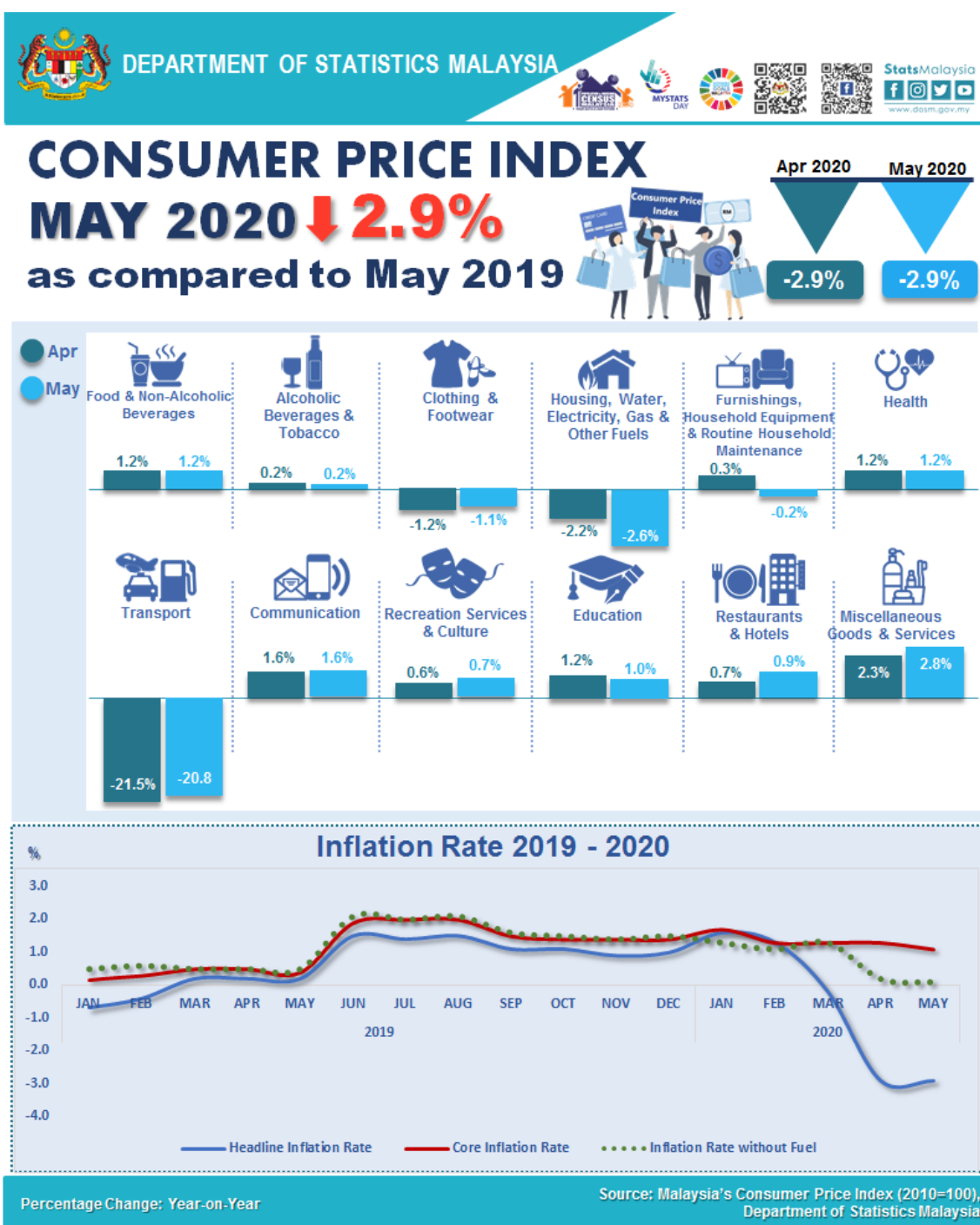




MINISTRY OF ECONOMY
DEPARTMENT OF STATISTICS MALAYSIA

CONSUMER PRICE INDEX MALAYSIA MAY 2020

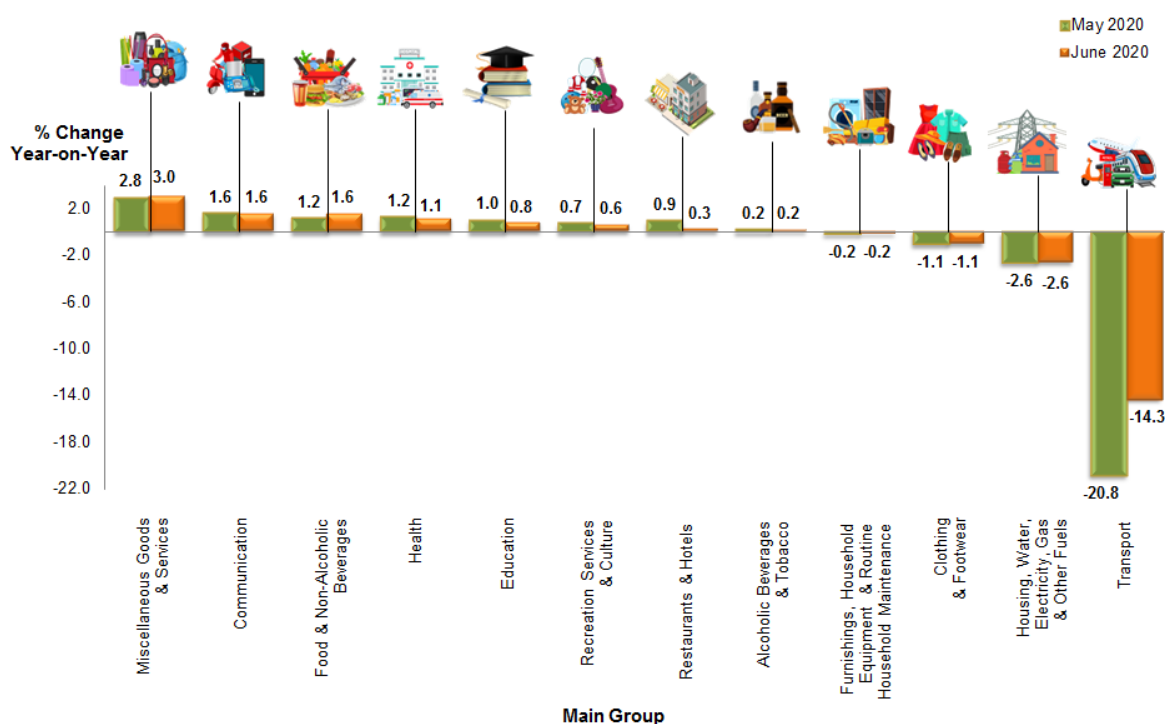


Summary Findings

Consumer Price Index (CPI) declined **2.9 per cent** in May 2020 to 117.9 as against 121.4 in the same month of the preceding year. The decrease in the overall index was driven by the decline of **Transport (-20.8%)**, **Housing, Water, Electricity, Gas & Other Fuels (-2.6%)**, **Clothing & Footwear (-1.1%)** and **Furnishings, Household Equipment & Routine Household Maintenance (-0.2%)** which contributed 45.7 per cent to overall weight.

Nevertheless, **Food & Non-Alcoholic Beverages** continued to increase in May 2020 by **1.2 per cent** to 134.3 as compared to 132.7 in corresponding month of the preceding year. Food & Non-Alcoholic Beverages contributes 29.5 per cent of CPI weight. Similarly, **Miscellaneous Goods & Services** also inclined by **2.8 per cent**, followed by **Communication (1.6%)**, **Health (1.2%)** and **Education (1.0%)**.

Chart 1: Percentage Change of Consumer Price Index by Main Group



Meanwhile, the CPI for the period of January to May 2020 decreased **0.7 per cent** as compared to the same period last year. The decrease was attributed by **Transport (-9.1%)** and **Clothing & Footwear (-1.2%)**.

Although year-on-year CPI decreased, CPI on a monthly basis increased by **0.3 per cent** as compared to April 2020. The increase was attributed by **Transport (1.0%)**, **Miscellaneous Goods & Services (0.5%)**, **Food & Non-Alcoholic Beverages (0.3%)**, **Restaurants & Hotels (0.1%)** and **Alcoholic Beverages & Tobacco (0.1%)**.

Index for Subgroup Food and Non-Alcoholic Beverages

Table 1: Percentage Change of Food & Non-Alcoholic Beverages

| Main Group | Weight | Index | Percentage Change | |
|---|--------|-----------|----------------------|-----------------------|
| | | June 2020 | June 2020 / May 2020 | June 2020 / June 2019 |
| Food & Non-Alcoholic Beverages | 29.5 | 134.9 | 0.4 | 1.6 |
| Food | 28.4 | 135.4 | 0.4 | 1.7 |
| Food at Home | 16.9 | 132.0 | 0.7 | 1.6 |
| Rice bread & other cereals | 3.5 | 111.7 | 0.2 | 0.9 |
| Meat | 2.5 | 129.5 | 2.6 | 5.7 |
| Fish & seafood | 4.0 | 153.4 | 0.5 | 0.7 |
| Milk, cheese & eggs | 1.5 | 124.1 | 0.1 | -0.9 |
| Oil & fats | 0.6 | 119.2 | 0.3 | 1.4 |
| Fruits | 1.2 | 134.5 | 0.5 | 1.1 |
| Vegetables | 2.1 | 139.9 | 0.6 | 2.1 |
| Sugar, jam, honey, chocolate & confectionery | 0.6 | 133.8 | 0.1 | -0.9 |
| Food products n.e.c | 1.0 | 135.7 | 0.4 | 2.8 |
| Food away from Home | 11.5 | 142.2 | 0.1 | 1.8 |
| Coffee, tea, cocoa & non-alcoholic beverages | 1.1 | 112.6 | 0.1 | 0.3 |

The index for **Food & Non-Alcoholic Beverages** increased **1.2 per cent** in May 2020 as compared to the same month of the previous year. The increase was attributed by the subgroup of **Meat (2.7%)**, **Food Products not elsewhere classified (2.6%)** and **Vegetables (2.4%)**.

Among the index of goods which recorded price increases in most states were **Small Onion (33.6%)**, **Big Onion (27.4%)** and **Garlic (26.8%)**.

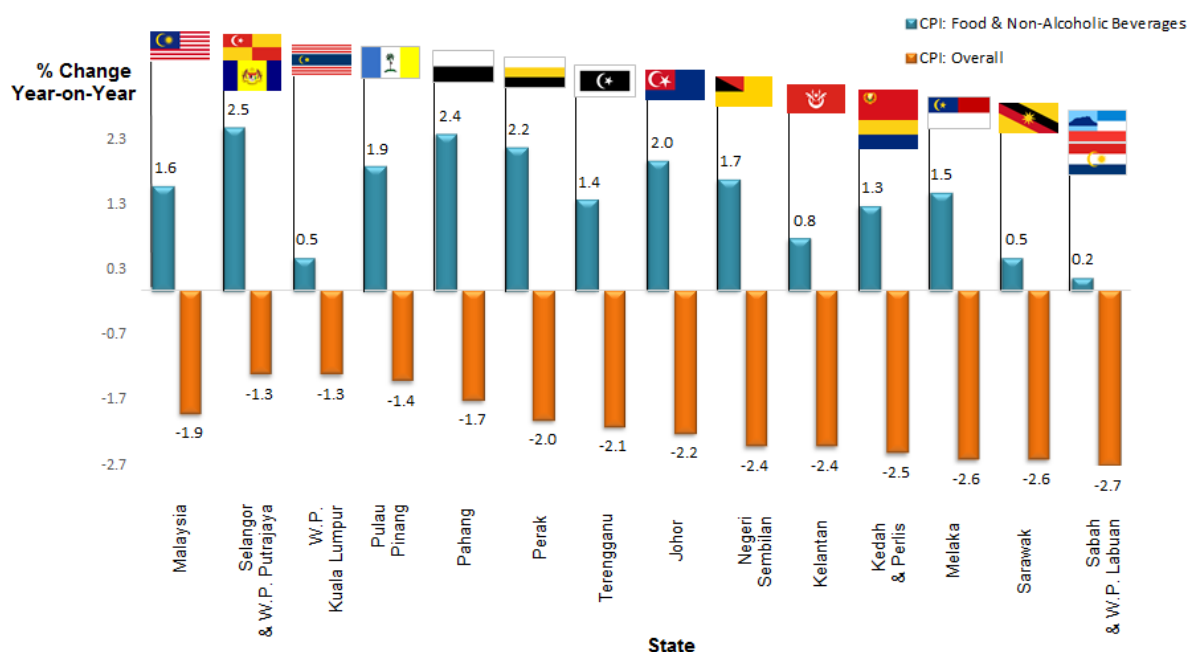
The index for **Food Away From Home** increased **1.6 per cent** in May 2020 as against May 2019. The increase in price of **Nasi Lemak**, **Fried Rice** and **Rice with Side Dishes** contributed to the increase of the index of this subgroup.

Consumer Price Index by State

The index for all states decreased **between -1.9 to -3.8 per cent** in May 2020 as compared to May 2019. The highest decrease was recorded by **Sarawak (-3.8%)** followed by **Kelantan (-3.7%)** and **Kedah & Perlis (-3.7%)**.

However, all states registered an increase in the index of Food & Non-Alcoholic Beverages. The highest increase was recorded by **Selangor & Wilayah Persekutuan Putrajaya (2.1%)**, **Perak (1.8%)**, **Pulau Pinang (1.7%)** and **Johor (1.3%)** and it surpassed the national index of 1.2 per cent for Food & Non-Alcoholic Beverages in May 2020.

Chart 2: Percentage Change of Food & Non-Alcoholic Beverages Group by State



CPI without Fuel

CPI without fuel is at a positive rate of **0.1 per cent** in May 2020 as compared to 0.2 per cent in April 2020. CPI without fuel covers all goods and services except Unleaded Petrol RON95, Unleaded Petrol RON97 and Diesel.

Chart 3: Percentage Change of CPI without Fuel, Jan 2019 - May 2020



Core Index

Core index rose **1.1 per cent** in May 2020 as compared to the same month of the previous year. Among the major groups which influenced the increase were **Miscellaneous Goods & Services (2.8%)**, **Communication (1.6%)** and **Housing, Water, Electricity, Gas & Other Fuels (1.4%)**.

Core index excludes most volatile items of fresh food as well as administered prices of goods and services.

Table 2: Percentage Change of Headline CPI, Seasonally Adjusted Index and Core Index by Main Group

| HEADLINE CPI | | | | | | SEASONALLY ADJUSTED INDEX | | CORE INDEX | |
|--|--------------|--------------|---------------------|----------------------|--------------------|---------------------------|----------------------------------|-------------------|--------------------------------|
| Main Group | Weight | Index | Percentage Change | | | Index | Month-on-Month Percentage Change | Core Index Weight | Year-on-Year Percentage Change |
| | | June 2020 | June 2020/ May 2020 | June 2020/ June 2019 | Jan-June 2020/2019 | June 2020 | June 2020/ May 2020 | | June 2020/ June 2019 |
| Total | 100.0 | 119.1 | 1.0 | -1.9 | -0.8 | 119.1 | 1.0 | 100.0 | 1.2 |
| Food & Non-Alcoholic Beverages | 29.5 | 134.9 | 0.4 | 1.6 | 1.2 | 135.0 | 0.5 | 26.5 | 1.3 |
| Alcoholic Beverages & Tobacco | 2.4 | 168.2 | 0.1 | 0.2 | 0.2 | 168.1 | 0.1 | - | - |
| Clothing and Footwear | 3.2 | 93.5 | -0.1 | -1.1 | -1.2 | 93.6 | -0.1 | 4.5 | -1.1 |
| Housing, Water, Electricity, Gas & Other Fuels | 23.8 | 117.9 | 0.0 | -2.6 | -0.4 | 118.0 | 0.2 | 26.5 | 1.4 |
| Furnishings, Household Equipment & Routine Household Maintenance | 4.1 | 116.4 | 0.1 | -0.2 | 0.5 | 116.3 | 0.1 | 5.5 | -0.2 |
| Health | 1.9 | 124.1 | 0.1 | 1.1 | 1.3 | 124.0 | 0.1 | 2.6 | 1.1 |
| Transport | 14.6 | 98.0 | 7.8 | -14.3 | -10.0 | 90.9 | 7.8 | 6.5 | -0.2 |
| Communication | 4.8 | 97.5 | 0.0 | 1.6 | 1.5 | 97.5 | 0.0 | 6.5 | 1.6 |
| Recreation Services & Culture | 4.8 | 112.3 | 0.0 | 0.6 | 0.7 | 112.3 | 0.0 | 6.6 | 0.6 |
| Education | 1.3 | 120.5 | -0.2 | 0.8 | 1.3 | 120.5 | 0.0 | 1.8 | 0.8 |
| Restaurants and Hotels | 2.9 | 132.1 | -0.4 | 0.3 | 0.8 | 132.6 | -0.4 | 3.9 | 0.3 |
| Miscellaneous Goods & Services | 6.7 | 116.0 | 0.4 | 3.0 | 2.6 | 115.5 | 0.4 | 9.1 | 3.0 |
| Non-Food | 70.5 | 112.5 | 1.3 | -3.6 | -1.8 | - | - | - | - |

Annex 1: Average Price for Selected Items in Malaysia, May 2020 (RM)

Released By:

DATO' SRI DR. MOHD UZIR MAHIDIN
CHIEF STATISTICIAN MALAYSIA
DEPARTMENT OF STATISTICS, MALAYSIA

 [DrUzir_Mahidin](#)  [Dr_Uzir](#) 

#myHariBulan# #myBulan# #myTahun#

Contact person:

Mohd Yusrizal bin Ab. Razak
Public Relation Officer
Strategic Communication and International Division
Department of Statistics, Malaysia
Tel : +603-8885 7942
Fax : +603-8888 9248
E-mail : yusrizal.razak[at]dosm.gov.my

Contact person:

Baharudin Mohamad
Public Relation Officer
Strategic Communication and International Division
Department of Statistics Malaysia

Tel : +603-8090 4681

Fax : +603-8888 9248

Email : baharudin[at]dosm.gov.my

Copyright ©2025 Department of Statistics Malaysia Official Portal. All Rights Reserved.