



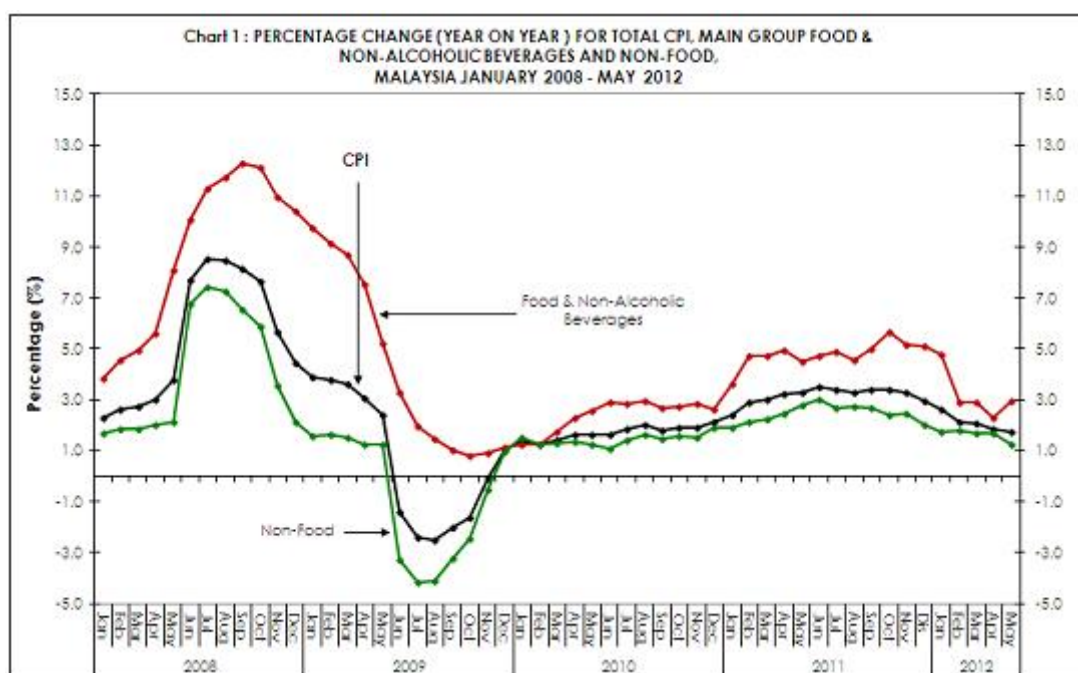
MINISTRY OF ECONOMY  
DEPARTMENT OF STATISTICS MALAYSIA

## CONSUMER PRICE INDEX MALAYSIA MAY 2012

### Consumer Price Index Malaysia May 2012

The Consumer Price Index (CPI) for the period January to May 2012 increased by **2.1 per cent** to 104.5 compared with that of 102.4 in the same period last year. Compared with the same month in 2011, the CPI for May 2012 registered an increase of 1.7 per cent from 102.9 to 104.7 and when compared with the previous month, the CPI increased by 0.2 per cent.

The index for Food & Non-Alcoholic Beverages and Non-Food for the month of May 2012 showed increases of 3.0 and 1.2 per cent respectively as compared to the same month in 2011. For the period January to May 2012, the index for Food & Non-Alcoholic Beverages and Non-Food increased by 3.2 and 1.5 per cent respectively. Compared with the previous month, the index for Food & Non-Alcoholic Beverages increased by 0.7 per cent while index for Non-Food remained unchanged at 103.7 (Table 1).



### CPI changes for the period January - May 2012 / 2011

The 2.1 per cent increase in the CPI was brought about by increases observed in the indices of all the main groups except those of Communication ( - 0.6 per cent ) and Clothing & Footwear ( - 0.4 per cent ). Notable increases among these main groups with high weights were Food & Non-Alcoholic Beverages ( + 3.2 per cent ); Housing, Water, Electricity, Gas & Other Fuels ( + 1.8 per cent ) and Transport ( + 1.1 per cent ). Other increases were Restaurants & Hotels ( + 3.5 per cent ); Education ( + 2.9 per cent ); Miscellaneous Goods & Services ( + 2.7 per cent ); Recreation Services & Culture ( + 2.3 per cent ); Furnishings,

Household Equipment & Routine Household Maintenance and Health by 2.2 per cent respectively. The index for Alcoholic Beverages & Tobacco remained unchanged at 104.6.

**Table 1 : CONSUMER PRICE INDEX FOR MAIN GROUPS, MALAYSIA (2010=100)**

Group	Wt.	Index					% Change		
		May 2011	Apr 2012	May 2012	Jan - May 2011	Jan - May 2012	May 2012/ Apr 2012	May 2012/ May 2011	Jan - May 2012/ 2011
<b>TOTAL</b>	<b>100.0</b>	<b>102.9</b>	<b>104.5</b>	<b>104.7</b>	<b>102.4</b>	<b>104.5</b>	<b>0.2</b>	<b>1.7</b>	<b>2.1</b>
<b>Food &amp; Non-Alcoholic Beverages</b>	<b>30.3</b>	<b>104.0</b>	<b>106.4</b>	<b>107.1</b>	<b>103.6</b>	<b>106.9</b>	<b>0.7</b>	<b>3.0</b>	<b>3.2</b>
Alcoholic Beverages & Tobacco	2.2	104.6	104.6	104.7	104.6	104.6	0.1	0.1	0.0
Clothing and Footwear	3.4	99.8	99.5	99.5	99.9	99.5	0.0	-0.3	-0.4
Housing, Water, Electricity, Gas & Other Fuels	22.6	101.6	103.0	103.2	101.2	103.0	0.2	1.6	1.8
Furnishings, Household Equip. & Routine Household Maintenance	4.1	101.4	103.6	103.7	101.2	103.4	0.1	2.3	2.2
Health	1.3	102.4	104.4	104.5	102.0	104.2	0.1	2.1	2.2
Transport	14.9	104.9	105.2	105.3	103.9	105.0	0.1	0.4	1.1
Communication	5.7	99.8	99.2	99.2	99.9	99.3	0.0	-0.6	-0.6
Recreation Services & Culture	4.6	101.9	103.2	103.2	100.9	103.2	0.0	1.3	2.3
Education	1.4	102.1	104.8	104.8	101.7	104.6	0.0	2.6	2.9
Restaurants and Hotels	3.2	105.6	108.6	108.8	104.6	108.3	0.2	3.0	3.5
Miscellaneous Goods & Services	6.3	101.7	103.9	103.9	101.3	104.0	0.0	2.2	2.7
<b>Non-Food</b>	<b>69.7</b>	<b>102.4</b>	<b>103.7</b>	<b>103.7</b>	<b>101.9</b>	<b>103.5</b>	<b>0.0</b>	<b>1.2</b>	<b>1.5</b>
Durable Goods	6.5	100.4	100.2	100.0	100.2	100.5	-0.2	-0.4	0.3
Semi-Durable Goods	4.4	100.3	100.3	100.2	100.2	100.3	-0.1	-0.1	0.1
Non-Durable Goods	41.6	104.0	105.3	105.7	103.6	105.6	0.4	1.6	1.9
Services	47.5	102.5	104.6	104.8	101.9	104.5	0.2	2.2	2.6

Based on the above changes and the weights assigned to the main groups, the relative contribution to the overall increase of 2.1 per cent in the CPI can be identified as shown in Table 2. The three main groups, Food & Non-Alcoholic Beverages; Housing, Water, Electricity, Gas & Other Fuels and Transport together accounted for 76.2 per cent of the overall increase recorded for the current period.

**Table 2 : CONTRIBUTION TO THE CHANGES IN THE OVERALL CONSUMER PRICE INDEX  
BY MAIN GROUPS, MALAYSIA (2010=100)**

Group	Wt.	2011 / 2010		May 2012 / 2011		January - May 2012 / 2011	
		% Change	% Contribution	% Change	% Contribution	% Change	% Contribution
<b>TOTAL</b>	<b>100.0</b>	<b>3.2</b>	<b>100.0</b>	<b>1.7</b>	<b>100.0</b>	<b>2.1</b>	<b>100.0</b>
Food & Non-Alcoholic Beverages	30.3	4.8	46.4	3.0	53.4	3.2	48.9
Alcoholic Beverages & Tobacco	2.2	4.6	3.2	0.1	0.1	0.0	0.0
Clothing and Footwear	3.4	-0.2	-0.3	-0.3	-0.7	-0.4	-0.5
Housing, Water, Electricity, Gas & Other Fuels	22.6	1.8	12.5	1.6	21.0	1.8	19.1
Furnishings, Household Equip. & Routine Household Maintenance	4.1	1.8	2.3	2.3	5.2	2.2	4.2
Health	1.3	2.7	1.2	2.1	1.5	2.2	1.3
Transport	14.9	4.4	20.7	0.4	3.2	1.1	8.2
Communication	5.7	-0.3	-0.5	-0.6	-2.1	-0.6	-1.8
Recreation Services & Culture	4.6	2.0	2.8	1.3	3.1	2.3	5.0
Education	1.4	2.2	1.0	2.6	2.1	2.9	1.9
Restaurants and Hotels	3.2	5.9	6.0	3.0	5.7	3.5	5.8
Miscellaneous Goods & Services	6.3	2.4	4.7	2.2	7.5	2.7	7.9

The 3.2 per cent increase in the index for Food & Non-Alcoholic Beverages was the result of increases for Food At Home ( + 2.5 per cent ); Food Away From Home ( + 4.5 per cent ) and Coffee, Tea, Cocoa & Non-Alcoholic Beverages ( + 3.4 per cent ). Among the subgroups of Food At Home which showed significant increases during this period were **Fish & Seafood ( + 7.7 per cent ); Milk & Eggs ( + 4.2 per cent ); Sugar, Jam, Honey, Chocolate and Confectionery ( + 4.1 per cent ); Fruits ( + 1.9 per cent ); Rice, Bread and Other Cereals ( + 1.5 per cent )** and **Oils & Fats ( + 1.1 per cent )**.

**Table 3 : CONSUMER PRICE INDEX FOR SUB-GROUPS OF FOOD AND  
NON-ALCOHOLIC BEVERAGES, MALAYSIA (2010=100)**

Sub-group	Wt.	Index					% Change		
		May 2011	Apr 2012	May 2012	Jan - May 2011	Jan - May 2012	May 2012/ Apr 2012	May 2012/ May 2011	Jan - May 2012/2011
<b>Food &amp; Non-Alcoholic Beverages</b>	<b>30.3</b>	<b>104.0</b>	<b>106.4</b>	<b>107.1</b>	<b>103.6</b>	<b>106.9</b>	<b>0.7</b>	<b>3.0</b>	<b>3.2</b>
<b>Food</b>	<b>28.9</b>	<b>104.1</b>	<b>106.5</b>	<b>107.2</b>	<b>103.7</b>	<b>107.0</b>	<b>0.7</b>	<b>3.0</b>	<b>3.2</b>
Food At Home	18.9	104.2	105.7	106.6	104.0	106.6	0.9	2.3	2.5
Rice, Bread & Other Cereals	4.4	101.1	102.5	102.5	100.9	102.4	0.0	1.4	1.5
Meat	2.9	107.0	103.0	105.3	104.8	104.4	2.2	-1.6	-0.4
Fish & Seafood	4.5	103.9	110.9	112.3	103.8	111.8	1.3	8.1	7.7
Milk & Eggs	1.8	104.9	107.3	108.5	104.4	108.8	1.1	3.4	4.2
Oils and Fats	0.6	100.4	101.3	101.4	100.2	101.3	0.1	1.0	1.1
Fruits	1.2	105.5	107.4	107.7	105.8	107.8	0.3	2.1	1.9
Vegetables	2.1	103.9	100.2	101.4	107.7	103.4	1.2	-2.4	-4.0
Sugar, Jam, Honey, Choc. & Confectionery	0.6	113.2	113.6	113.6	109.0	113.5	0.0	0.4	4.1
Food Products n.e.c.	0.8	105.0	110.0	110.0	103.7	110.1	0.0	4.8	6.2
Food Away From Home	10.0	103.9	108.1	108.2	103.2	107.8	0.1	4.1	4.5
<b>Coffee, Tea, Cocoa &amp; Non-Alcoholic Beverages</b>	<b>1.4</b>	<b>102.0</b>	<b>105.0</b>	<b>105.1</b>	<b>101.3</b>	<b>104.7</b>	<b>0.1</b>	<b>3.0</b>	<b>3.4</b>

## Monthly Changes for CPI

Compared with the previous month, the CPI for May 2012 increased by 0.2 per cent. Increases were for main groups Food & Non-Alcoholic Beverages ( + 0.7 per cent ); Housing, Water, Electricity, Gas & Other Fuels and Restaurants & Hotels by 0.2 per cent respectively; Alcoholic Beverages & Tobacco; Furnishings, Household Equipment & Routine Household Maintenance; Health and Transport by 0.1 per cent respectively. The indices for Clothing & Footwear; Communication; Recreation Services & Culture; Education and Miscellaneous Goods & Services remained unchanged at 99.5; 99.2; 103.2; 104.8 and 103.9 respectively.

The 0.7 per cent increase in the index for Food & Non-Alcoholic Beverages in May 2012 compared with that of the previous month was the result of increases in the index for Food At Home ( + 0.9 per cent ); Food Away From Home and Coffee, Tea, Cocoa & Non-Alcoholic Beverages by 0.1 per cent respectively.

Among the food items which recorded notable increases in May 2012 compared with the previous month were **Choy Sum ( + 5.7 per cent ); Spinach ( + 5.2 per cent ); Water Spinach ( + 4.9 per cent ); Chicken ( + 4.5 per cent ); Round Cabbage ( + 4.5 per cent ); Hen's Eggs ( + 3.0 per cent ); Round Scad (Fish) ( + 2.9 per cent ); Hardtail Scad (Fish) ( + 2.6 per cent ); Cuttlefish ( + 2.4 per cent )** and **Indian Mackerel (Fish) ( + 2.2 per cent )**.

Meanwhile, the index of some food items decreased in May 2012 compared with the previous month. Among these were **Tomatoes ( - 6.1 per cent ); Red Chillies ( - 5.0 per cent ); Long Beans ( - 4.3 per cent ); Prawns ( - 0.6 per cent )** and **Onion, Big ( - 0.3 per cent )**.

A reclassification of items according to their durability and services rendered showed increases in Non-Durable Goods ( + 0.4 per cent ) and Services ( + 0.2 per cent ) while Durable Goods and Semi-Durable Goods decreased by 0.2 and 0.1 per cent respectively.

### Contact person:

Baharudin Mohamad  
Public Relation Officer  
Strategic Communication and International Division  
Department of Statistics Malaysia  
Tel : +603-8090 4681  
Fax : +603-8888 9248  
Email : baharudin[at]dosm.gov.my

**Copyright ©2025 Department of Statistics Malaysia Official Portal. All Rights Reserved.**