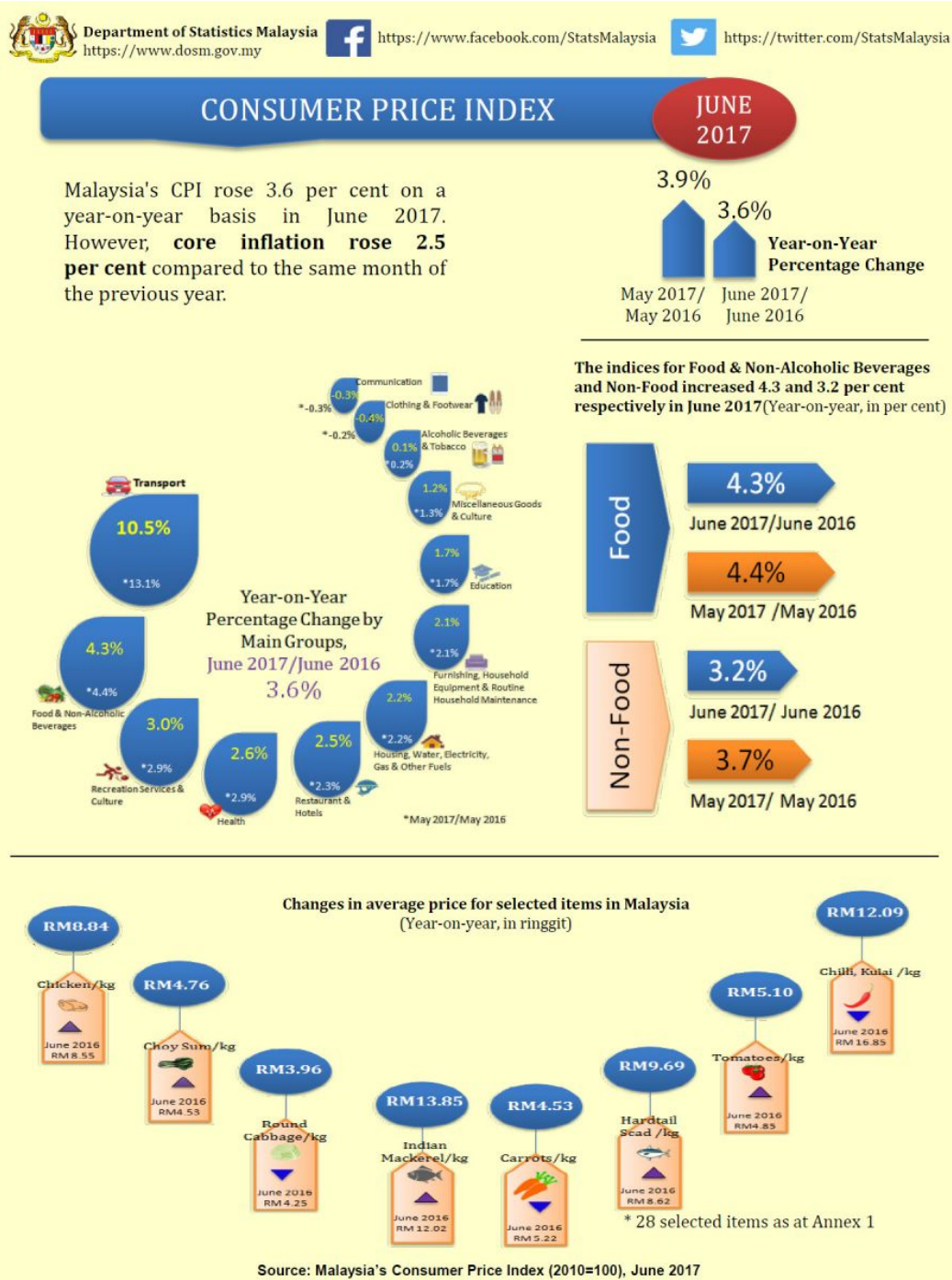




MINISTRY OF ECONOMY  
DEPARTMENT OF STATISTICS MALAYSIA

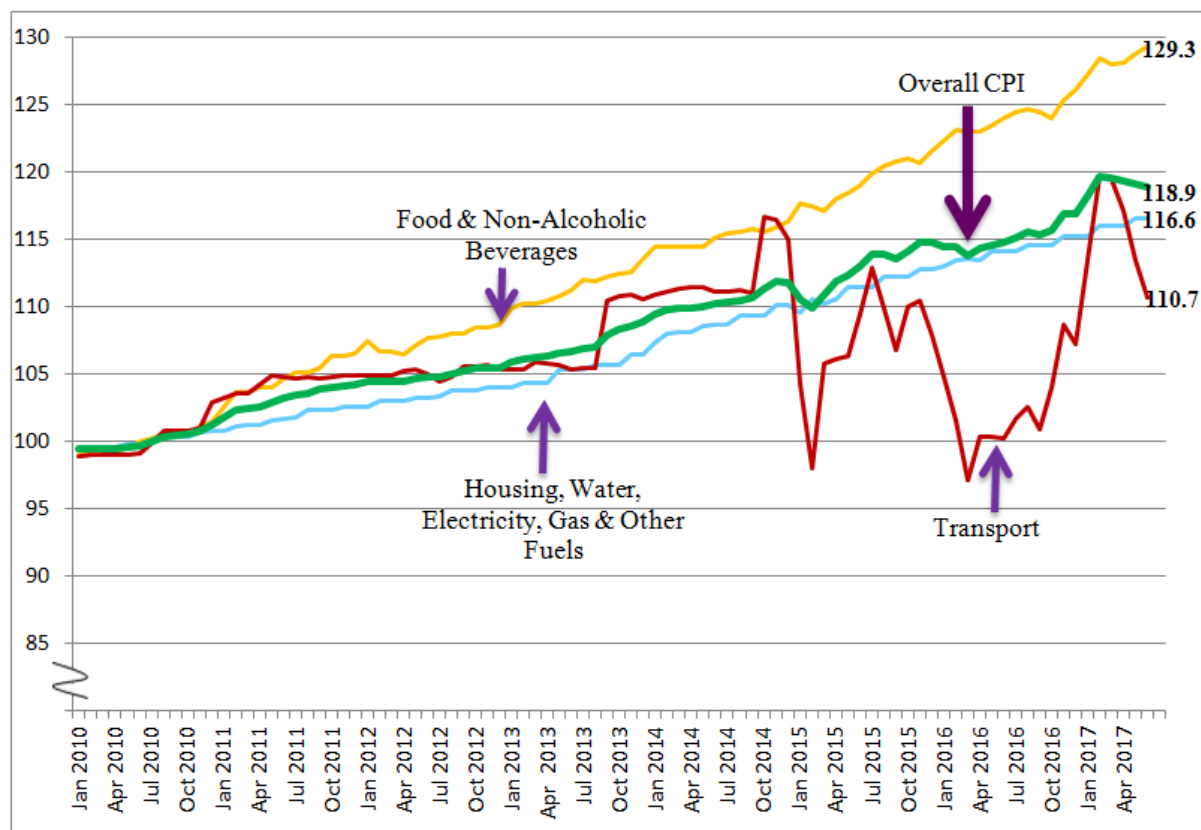
## CONSUMER PRICE INDEX MALAYSIA JUNE 2017



## SUMMARY OF FINDINGS

The overall index for CPI rose at 3.6 per cent on a year-on-year basis in June 2017 compared with 3.9 per cent increase in May 2017. Among the major groups which recorded increases were the indices for Transport (+10.5 per cent), Food & Non-Alcoholic Beverages (+4.3 per cent), Recreation Services & Culture (+3.0 per cent), Health (+2.6 per cent), Restaurants and Hotels (+2.5 per cent) and Housing, Water, Electricity, Gas & Other Fuels (+2.2 per cent). (Table 1)

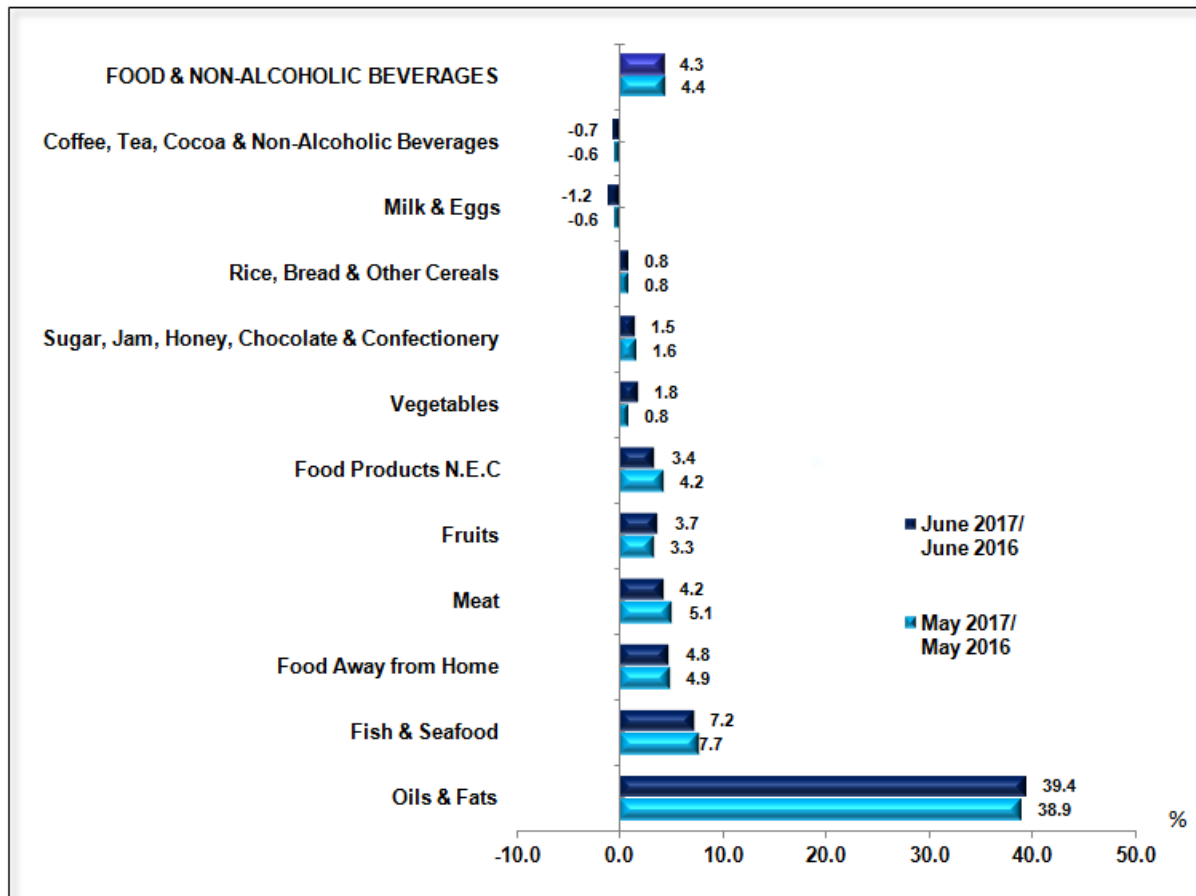
**Chart 1: Consumer Price Index: Index Number for Overall and Selected Main Groups**



The index of transport group showed a significant increase of 10.5 per cent on a year-on-year basis in June 2017, after rising 13.1 per cent in May 2017. The average price of 1 litre of RON95 petrol was RM2.00 in June 2017 compared to RM1.70 in June 2016. As for RON97, the average price increased to RM2.27 in June 2017 compared to RM2.05 in June 2016. Fuels & lubricants for personal transport equipment accounted for 7.8 per cent of the CPI weights.

The index for Food & Non-Alcoholic Beverages which accounted 30.2 per cent in the CPI weights, increased 4.3 per cent in June 2017. The increase was fuelled by food sub-group which comprised of **Oils and Fats (+39.4 per cent)**, **Fish & Seafood (+7.2 per cent)**, **Meat (+4.2 per cent)**, **Fruits (+3.7 per cent)** and **Vegetables (+1.8 per cent)**. As for Food Away From Home index, it continued to rise in June 2017 and showed an increase of 4.8 per cent.

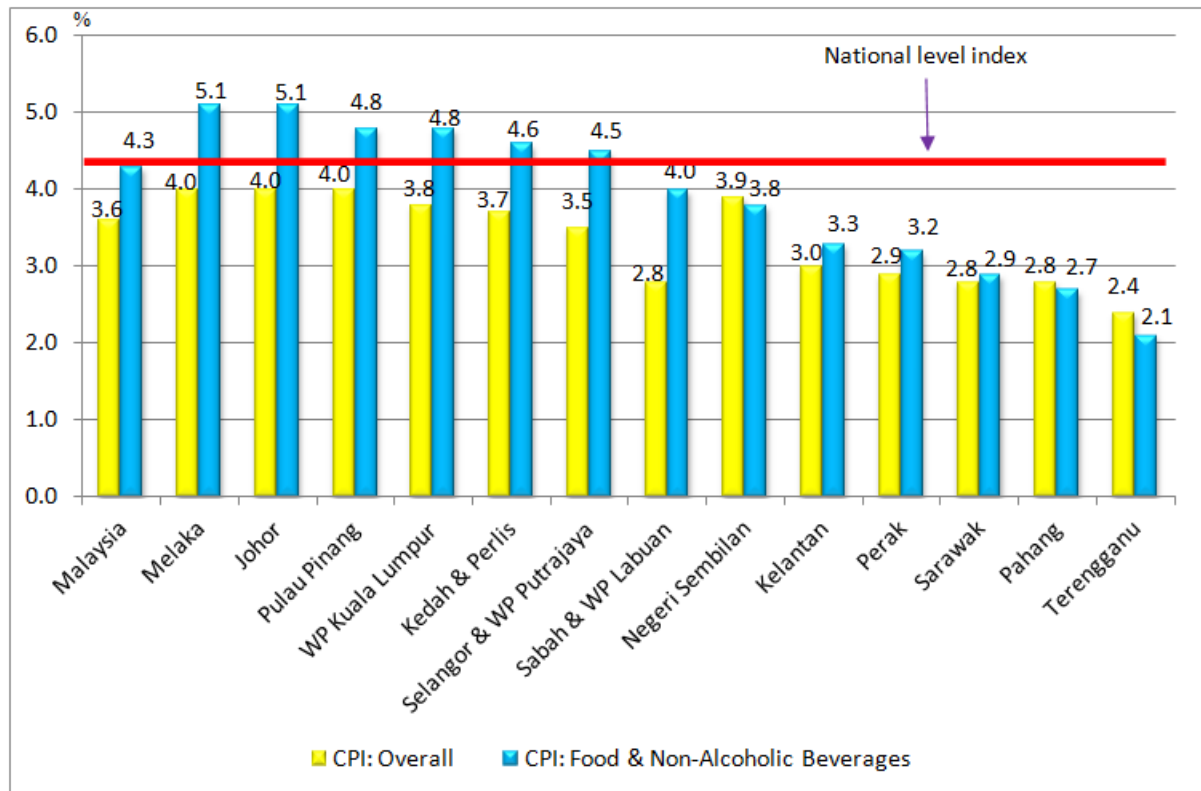
**Chart 2: Consumer Price Index: Annual Percentage Change for Food & Non-Alcoholic Beverages**



Among the index of food items which recorded notable increases in June 2017 compared to the same period last year were **Cooking Oil (+48.9 per cent)**, **Hardtail Scad (Fish) (+11.8 per cent)**, **Spinach (+9.8 per cent)**, **Indian Mackerel (Fish) (+9.1 per cent)**, **Cuttlefish (+7.8 per cent)**, **Prawn (+7.4 per cent)**, **Watermelon (+5.9 per cent)**, **Spanish Mackerel (Fish) (+5.2 per cent)**, **Choy Sum (+4.7 per cent)** and **Chicken (+3.3 per cent)**. Meanwhile, decreases were registered in the index of some food items such as **Carrots (-14.3 per cent)**, **Hen's Eggs (-6.5 per cent)**, **Round Cabbage (-5.3 per cent)** and **Onions, Big (-1.9 per cent)**.

The increase in the index for Food & Non-Alcoholic Beverages was reflected in most states in Malaysia especially those in highly urbanised states such as Wilayah Persekutuan Kuala Lumpur, Selangor & Wilayah Persekutuan Putrajaya, Pulau Pinang, Johor and Melaka.

**Chart 3: Consumer Price Index: Annual Percentage Change for Food & Non-Alcoholic Beverages by State**



Six states recorded higher increases for Food & Non-Alcoholic Beverages index above the national level index for June 2017 compared to the corresponding month in 2016. The index for Food & Non-Alcoholic Beverages rose 5.1 per cent in Melaka, 5.1 per cent in Johor, 4.8 per cent in Pulau Pinang, 4.8 per cent in Wilayah Persekutuan Kuala Lumpur, 4.6 per cent in Kedah & Perlis and 4.5 per cent in Selangor & Wilayah Persekutuan Putrajaya.

On a monthly basis, the index for Food & Non-Alcoholic Beverages increased 0.4 per cent in June 2017, after an increase of 0.5 per cent in May 2017. Meanwhile, the index for Non-Food decreased 0.4 per cent in June 2017 compared with the preceding month.

Based on a seasonally adjusted term, the overall CPI for June 2017 decreased 0.2 per cent as compared to May 2017. (Table 1)

Core inflation rose 2.5 per cent in June 2017 compared to the same month of the previous year. Among the major groups which influenced the higher core rate were price increases for Food & Non-Alcoholic Beverages (+4.1 per cent), Transport (+3.3 per cent), Recreation Services & Culture (+3.0 per cent), Health (+2.6 per cent) and Housing, Water, Electricity, Gas & Other Fuels (+2.7 per cent). (Table 3)

## CPI changes for the period January - June 2017/2016

CPI for the period January to June 2017 registered an increase of 4.1 per cent as compared to the same period last year. The index for Food & Non-Alcoholic Beverages was the main contributor to the CPI rise in the period January to June 2017, registered an increase of 4.2 per cent. The increase was the result of increases in the index for Food At Home (+4.3 per cent) and Food Away From Home (+4.4 per cent). While, the index for Coffee, Tea, Cocoa & Non-Alcoholic Beverages decreased 0.4 per cent. Among the subgroups of Food At Home which showed significant increases during this period as shown in Table 2 were **Oils & Fats (+38.7 per cent)**, **Fish & Seafood (+6.1 per cent)**, **Vegetables (+4.4 per cent)**, **Meat (+4.0 per cent)** and **Fruits (+3.1 per cent)**.

Other major groups which contributed to the CPI rise during this period were Transport (+14.8 per cent), Recreation Services & Culture (+3.0 per cent), Health (+2.6 per cent), Restaurants & Hotels (+2.3 per cent) and Housing, Water, Electricity, Gas & Other Fuels (+2.2 per cent).

Core inflation, which excludes most volatile items of fresh food, as well as administered prices of goods and services recorded changes ranging from 2.3 per cent to 2.6 per cent in the period January to June 2017 compared to the same period of the previous year.

**Table 1: Consumer Price Index for Main Groups, Malaysia (2010=100)**

Main Group	Wt	Index		Year-on-Year Percentage Change		Month-on-Month Percentage Change		Seasonally Adjusted Index	
		June 2017	May 2017/ May 2016	June 2017/ June 2016	Jan-June 2017/2016	May 2017/ April 2017	June 2017/ May 2017	June 2017	% Change June 2017/ May 2017
<b>TOTAL</b>	<b>100.0</b>	<b>118.9</b>	<b>3.9</b>	<b>3.6</b>	<b>4.1</b>	<b>-0.2</b>	<b>-0.2</b>	<b>118.9</b>	<b>-0.2</b>
<b>Food &amp; Non-Alcoholic Beverages</b>	<b>30.2</b>	<b>129.3</b>	<b>4.4</b>	<b>4.3</b>	<b>4.2</b>	<b>0.5</b>	<b>0.4</b>	<b>129.3</b>	<b>0.2</b>
Alcoholic Beverages & Tobacco	2.9	165.5	0.2	0.1	0.2	0.1	-0.1	165.5	-0.1
Clothing and Footwear	3.3	98.2	-0.2	-0.4	-0.3	-0.2	-0.2	98.2	-0.2
Housing, Water, Electricity, Gas & Other Fuels	23.8	116.6	2.2	2.2	2.2	0.5	0.0	116.5	0.1
Furnishings, Household Equipment & Routine Household Maintenance	3.8	114.2	2.1	2.1	1.8	0.3	0.0	114.2	0.0
Health	1.7	120.8	2.9	2.6	2.6	0.2	0.2	120.8	0.2
Transport	13.7	110.7	13.1	10.5	14.8	-3.2	-2.4	110.7	-2.4
Communication	5.2	97.8	-0.3	-0.3	-0.3	0.0	0.0	97.8	0.0
Recreation Services & Culture	4.9	111.5	2.9	3.0	3.0	0.0	0.1	111.5	0.1
Education	1.1	116.8	1.7	1.7	1.7	0.0	0.1	116.6	0.1
Restaurants and Hotels	2.9	128.0	2.3	2.5	2.3	0.2	0.1	128.0	0.1
Miscellaneous Goods & Services	6.5	114.1	1.3	1.2	1.3	0.0	-0.1	114.1	-0.1
<b>Non-Food</b>	<b>69.8</b>	<b>114.4</b>	<b>3.7</b>	<b>3.2</b>	<b>4.0</b>	<b>-0.5</b>	<b>-0.4</b>	<b>114.4</b>	<b>-0.4</b>

**Table 2: Consumer Price Index for Sub-Groups of Food and Non-Alcoholic Beverages, Malaysia (2010=100)**

Sub-groups	Wt	Index	Year-on-Year Percentage Change		Month-on-Month Percentage Change		
		June 2017	May 2017/ May 2016	June 2017/ June 2016	Jan-June 2017/2016	May 2017/ April 2017	June 2017/ May 2017
Food & Non-Alcoholic Beverages	30.2	129.3	4.4	4.3	4.2	0.5	0.4
Food	29.0	130.1	4.6	4.4	4.4	0.5	0.4
Food At Home	17.9	129.5	4.3	4.2	4.3	0.7	0.7
Rice, Bread & Other Cereals	3.7	109.2	0.8	0.8	0.8	0.1	-0.1
Meat	2.8	127.6	5.1	4.2	4.0	1.0	1.6
Fish & Seafood	4.3	148.0	7.7	7.2	6.1	0.5	1.8
Milk & Eggs	1.6	123.3	-0.6	-1.2	-0.4	1.3	-0.2
Oils & Fats	0.5	141.9	38.9	39.4	38.7	-0.1	-0.1
Fruits	1.1	130.4	3.3	3.7	3.1	-0.1	0.2
Vegetables	2.4	133.7	0.8	1.8	4.4	2.6	-0.1
Sugar, Jam, Honey, Choc. & Confectionery	0.6	136.2	1.6	1.5	1.1	-0.1	-0.1
Food Products n.e.c.	0.9	130.7	4.2	3.4	4.7	0.2	-0.1
Food Away From Home	11.1	131.2	4.9	4.8	4.4	0.2	0.1
Coffee, Tea, Cocoa & Non-Alcoholic Beverages	1.2	111.1	-0.6	-0.7	-0.4	-0.1	-0.2

**Table 3: Headline CPI and Core Index by Main Groups, Malaysia (2010=100)**

Main Group	Wt	HEADLINE CPI			CORE INDEX	
		Index June 2017	Percentage Change		Core Index <sup>(1)</sup> Wt.	Percentage Change
			June 2017/ May 2017	June 2017/ June 2016		
<b>TOTAL</b>	<b>100.0</b>	<b>118.9</b>	<b>-0.2</b>	<b>3.6</b>	<b>100.0</b>	<b>2.5</b>
Food & Non-Alcoholic Beverages	30.2	129.3	0.4	4.3	26.7	4.1
Alcoholic Beverages & Tobacco	2.9	165.5	-0.1	0.1	-	-
Clothing and Footwear	3.3	98.2	-0.2	-0.4	4.5	-0.2
Housing, Water, Electricity, Gas & Other Fuels	23.8	116.6	0.0	2.2	26.6	2.7
Furnishings, Household Equipment & Routine Household Maintenance	3.8	114.2	0.0	2.1	5.2	2.1
Health	1.7	120.8	0.2	2.6	2.3	2.6
Transport	13.7	110.7	-2.4	10.5	6.7	3.3
Communication	5.2	97.8	0.0	-0.3	7.1	-0.3
Recreation Services & Culture	4.9	111.5	0.1	3.0	6.6	3.0
Education	1.1	116.8	0.1	1.7	1.5	1.7
Restaurants and Hotels	2.9	128.0	0.1	2.5	3.9	2.5
Miscellaneous Goods & Services	6.5	114.1	-0.1	1.2	8.9	1.2

Note: <sup>(1)</sup> Including cooking oil following the restructuring of Cooking Oil Price Stabilisation Scheme starting from 1 November 2016

Average prices for selected items in Malaysia, June 2017 (RM)

No.	Selected Items	June 2017	May 2017	June 2016	June 2017/ May 2017	June 2017/ June 2016
1	Spinach	4.30	4.50	4.04	-4.4	6.4
2	Chilli (Burung/padi) Import	2.31	2.29	2.62	0.9	-11.8
3	Green Chilli	11.09	11.06	13.23	0.3	-16.2
4	Chilli (Kulai)	12.09	12.18	16.85	-0.7	-28.2
5	Red Chilli (Tempatan/minyak)	11.20	11.28	13.14	-0.7	-14.8
6	Long Beans	6.30	6.04	5.86	4.3	7.5
7	French Beans	8.76	7.91	8.37	10.7	4.7
8	Round Cabbage	3.96	3.83	4.25	3.4	-6.8
9	Carrot	4.53	4.38	5.22	3.4	-13.2
10	Choy Sam	4.76	5.16	4.53	-7.8	5.1
11	Tomatoes	5.10	4.89	4.85	4.3	5.2
12	Cucumber	3.74	3.46	3.47	8.1	7.8
13	Apple Fuji	1.71	1.70	1.68	0.6	1.8
14	Apple (Green Skin)	1.15	1.17	1.11	-1.7	3.6
15	Apple (Red Skin, Gala)	1.21	1.21	1.18	0.0	2.5
16	Papaya	2.95	2.93	3.05	0.7	-3.3
17	Pisang Emas (Banana)	3.82	3.81	3.68	0.3	3.8
18	Pisang Rastali (Banana)	3.74	3.75	3.62	-0.3	3.3
19	Pisang Berangan (Banana)	4.05	4.07	3.95	-0.5	2.5
20	Coconut Grated	7.04	7.02	6.08	0.3	15.8
21	Fresh Coconut Milk	10.07	9.91	8.60	1.6	17.1
22	Hen's Egg Grade A	3.67	3.70	3.92	-0.8	-6.4
23	Hen's Egg Grade B	3.47	3.48	3.75	-0.3	-7.5
24	Hen's Egg Grade C	3.30	3.35	3.56	-1.5	-7.3
25	Hardtail Scad (Fish)	9.69	9.44	8.62	2.6	12.4
26	Indian Mackerel (Fish)	13.85	13.82	12.02	0.2	15.2
27	Chicken	8.84	8.58	8.55	3.0	3.4
28	Beef	29.38	28.82	27.76	1.9	5.8

**Released By:**

**DR. MOHD UZIR MAHIDIN**  
**CHIEF STATISTICIAN MALAYSIA**  
**DEPARTMENT OF STATISTICS, MALAYSIA**  
**#myHariBulan# #myBulan# #myTahun#**

**Contact person:**

Ho Mei Kei  
Public Relation Officer  
Corporate and User Services Division  
Department of Statistics, Malaysia  
**Tel** : +603-8885 7942  
**Fax** : +603-8888 9248  
**Email** : mkho[at]stats.gov.my

**Contact person:**

Baharudin Mohamad  
Public Relation Officer  
Strategic Communication and International Division  
Department of Statistics Malaysia  
**Tel** : +603-8090 4681  
**Fax** : +603-8888 9248

Email : [baharudin\[at\]dosm.gov.my](mailto:baharudin[at]dosm.gov.my)

**Copyright ©2025 Department of Statistics Malaysia Official Portal. All Rights Reserved.**