



MINISTRY OF ECONOMY
DEPARTMENT OF STATISTICS MALAYSIA

CAPITAL STOCK STATISTICS 2016



Department of Statistics, Malaysia

<https://www.dosm.gov.my>



<https://www.facebook.com/StatsMalaysia>



<https://twitter.com/StatsMalaysia>

Capital Stock Statistics 2016



Capital stock statistics provides information on accumulated investment in term of fixed assets



Gross Capital Stock (GKS)

The accumulated investment of fixed assets



Net Capital Stock (NKS)

The wealth of Malaysia's economy

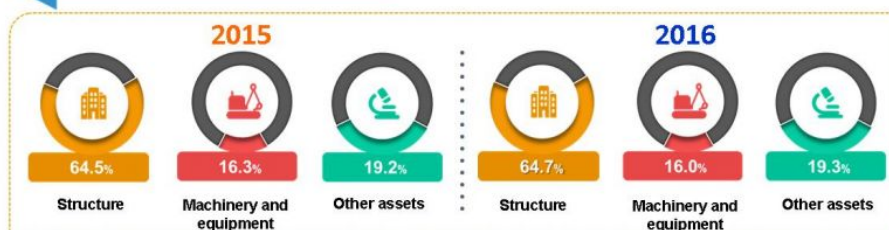


End year value

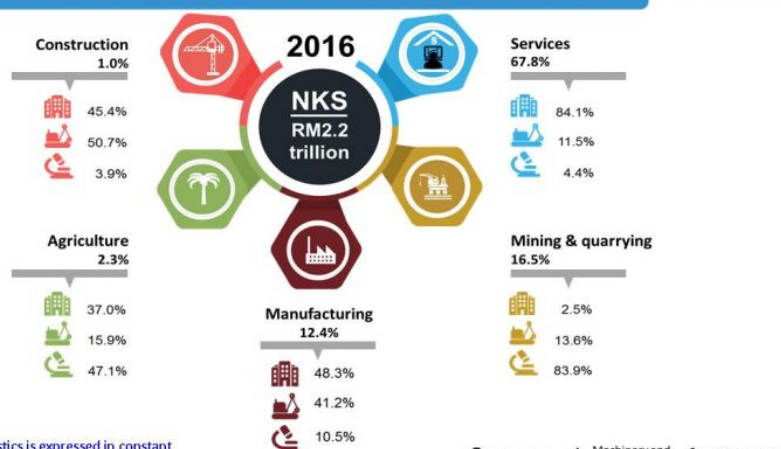


Annual percentage change

Share of NKS by type of assets



Share of NKS by kind of economic activity and type of assets



Note : The statistics is expressed in constant 2010 prices.



Structure



Machinery and equipment



Other assets

Net Capital Stock (NKS) which represents the wealth of Malaysia's economy in term of fixed assets increased to RM2.2 trillion and grew by 4.2 per cent. Services remained as the largest contributor to NKS with a share of 67.8 per cent. Mining & quarrying constituted of 16.5 per cent and Manufacturing was 12.4 per cent. By type of assets, structure was major contributor to Services with 84.1 per cent while other assets was dominated in Mining & quarrying accounted for 83.9 per cent.

[Capital Stock Statistics 2016 Tables](#)

Released By:

**THE OFFICE OF CHIEF STATISTICIAN MALAYSIA
DEPARTMENT OF STATISTICS, MALAYSIA
07 November 2017**

Contact person:

Ho Mei Kei
Public Relation Officer
Corporate and User Services Division
Department of Statistics, Malaysia
Tel : +603-8885 7942
Fax : +603-8888 9248
Email : mkho[at]stats.gov.my

Contact person:

Baharudin Mohamad
Public Relation Officer
Strategic Communication and International Division
Department of Statistics Malaysia
Tel : +603-8090 4681
Fax : +603-8888 9248
Email : baharudin[at]dosm.gov.my

Copyright ©2026 Department of Statistics Malaysia Official Portal. All Rights Reserved.