

**Embargo: Only to be published or disseminated at 1200 hour, Friday, December 19<sup>th</sup> 2025**



## **MEDIA STATEMENT**

**MINISTRY OF ECONOMY  
DEPARTMENT OF STATISTICS MALAYSIA**

Block C6 & C7, Complex C,  
Federal Government Administrative Centre, Precinct 1,  
62514 Federal Territory of Putrajaya  
Telephone : 03 - 8090 4681

### ***MALAYSIAN WELL-BEING INDEX (MyWI) 2024***

---

#### ***Malaysia Well-being Index 2024 reaches 120.6, social participation increased by 5.1 points and income by 5.9 points***

**PUTRAJAYA, DISEMBER 9, 2025** – The Department of Statistics Malaysia (DOSM) has released the Malaysian Well-being Index (MyWI) 2024 Report, which serves as an important benchmark in assessing the well-being of Malaysians from economic, social and environmental perspectives. This year's report also features methodological improvements through a review of indicators, including the addition of several indicators to ensure that the measurement of well-being is more relevant, comprehensive and aligned with current developments.

According to the Chief Statistician Malaysia, "The MyWI 2024, which increased to 120.6 points, proves that the well-being of Malaysians continues to improve, driven by economic progress, social strengthening and enhancements in environmental aspects. The indicator improvements implemented make the measurement of well-being more relevant and comprehensive. The increase in economic, social and environmental components reflects the resilience of Malaysians in facing global and domestic challenges, as well as the nation's commitment to sustainable development".

Overall, the **MyWI** recorded an increase of 20.6 points over 24 years, with the 2024 score rising to 120.6 as compared to 119.4 in 2023. All three sub-composites namely Economic, Social and Environmental showed positive progress, with the Economic remaining the main contributor, increasing by 2.2 index points to 128.8, followed by Social (1.1 index points) and

*Environmental (0.2 index points).*

*For the **Economic sub-composite**, the Income and Distribution component posted the highest increase in 2024 at 5.9 index points, followed by Transport (3.4 index points) and Communication (0.1 index points). Although the Working Life Index recorded a decline of 0.4 points, the improved indicators provide a more comprehensive and holistic picture and open up opportunities for further enhancements in work–life balance, long-term unemployment rates and labour well-being. These achievements signal a stronger economic recovery and more equitable income distribution.*

*The **Social sub-composite** also recorded increases across six key components. Social Participation (5.1 index points), recorded the highest rise, followed by Governance (4.7 index points), Housing (1.7 index points), Entertainment & Recreation (1.7 index points), Culture (0.4 index points) and Public Safety (0.1 index points). The review of social indicators emphasized access to quality education, women’s participation in parliament, health levels and life balance through recreational time. Despite a decline in Education, Health and Family components, the overall Social sub-composite continued to show positive progress.*

*The **Environmental sub-composite** also showed improvement, with increases in Air component (1.1 index points) and Biodiversity Resources (0.2 index points). The review of environmental indicators focused on greenhouse gas emissions, access to treated piped water and licensed forest areas for harvesting. Although the Water component declined by 0.7 index points, the overall achievement still reflects improvements in air quality and biodiversity, underscoring the nation’s commitment to environmental sustainability.*

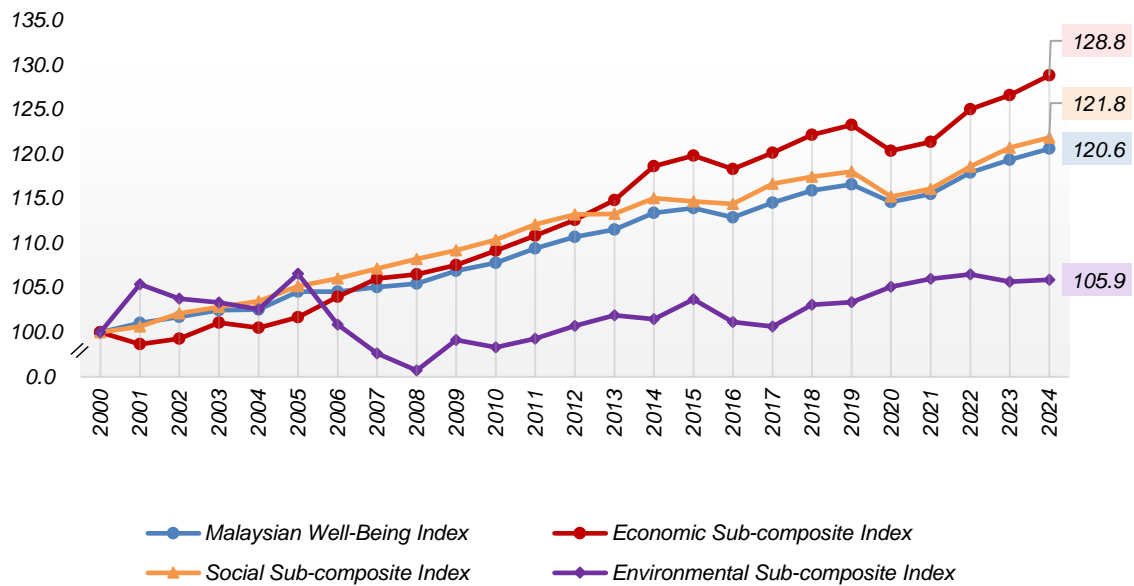
*At the **state level**, most states recorded increases, with Kelantan posting the highest increase of 2.0 index points, followed by Kedah and Sarawak, which each recorded 1.8 index points respectively and Sabah (1.3 index points). Sarawak registered the most significant improvement in the Economic sub-composite (3.7 index points), while Kedah recorded the highest increase in the Social sub-composite (3.0 index points). Meanwhile, Negeri Sembilan showed a notable rise in the Environmental sub-composite (4.7 index points).*

*In summary, the MyWI 2024 confirms that the well-being of Malaysians continues to rise, driven by economic progress, social strengthening and improvements in environmental aspects. The indicator enhancements implemented make the MyWI more robust as a key reference for the government in formulating sustainable development policies that emphasize both the well-being of the people and environmental sustainability.*

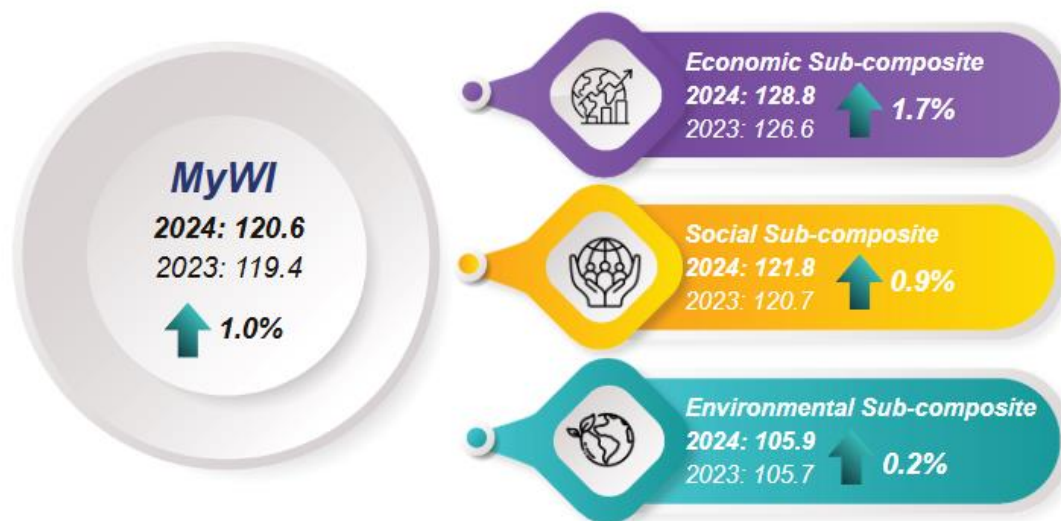
*Malaysia has, for the first time, successfully secured the top position globally in the biennial Open Data Inventory (ODIN) 2024/25 report released by Open Data Watch (ODW), surpassing 197 other countries. This achievement marks a significant leap from its 67<sup>th</sup> position in the ODIN 2022/23 assessment.*

*OpenDOSM NextGen is a medium that provides data catalogue and visualisations to facilitate users' analysis and can be accessed through <https://open.dosm.gov.my>.*

**Chart 1: Malaysian Well-being Index (MyWI), 2000-2024**



**Exhibit 1: Malaysian Well-being Index (MyWI) by sub-composites, 2023 and 2024**



Note: Baseyear MyWI (2000=100)

**Exhibit 2: Malaysian Well-being Index (MyWI) by state, 2023 and 2024**

2023	State	2024	Change of Index Points
116.2	Kelantan	118.2	▲ 2.0
115.1	Kedah	116.9	▲ 1.8
115.4	Sarawak	117.2	▲ 1.8
117.1	Sabah	118.4	▲ 1.3
116.0	Pahang	117.2	▲ 1.2
116.1	Selangor	117.0	▲ 0.9
114.9	Melaka	115.7	▲ 0.8
117.8	Johor	118.4	▲ 0.6
116.1	Terengganu	116.7	▲ 0.6
117.2	Pulau Pinang	117.7	▲ 0.5
114.4	Perlis	114.5	▲ 0.1
117.9	Negeri Sembilan	118.0	▲ 0.1
114.3	Wilayah Persekutuan	114.3	■ 0.0
118.4	Perak	117.6	▼ -0.8

**Exhibit 3: Economic Well-being Sub-composite Index by state, 2023 and 2024**

2023	State	2024	Change of Index Points
126.0	Sarawak	129.7	▲ 3.7
127.3	Johor	130.4	▲ 3.1
122.5	Wilayah Persekutuan	124.8	▲ 2.3
126.4	Kedah	128.6	▲ 2.2
125.3	Selangor	127.4	▲ 2.1
126.1	Perak	127.9	▲ 1.8
127.1	Pulau Pinang	128.9	▲ 1.8
123.8	Terengganu	125.6	▲ 1.8
121.5	Kelantan	123.0	▲ 1.5
124.8	Melaka	126.2	▲ 1.4
126.0	Sabah	127.3	▲ 1.3
126.0	Pahang	127.3	▲ 1.3
126.2	Perlis	126.9	▲ 0.7
125.1	Negeri Sembilan	123.5	▼ -1.6

**Exhibit 4: Social Well-being Sub-composite Index by state, 2023 and 2024**

2023	State	2024	Change of Index Points
116.3	Kedah	119.3	▲ 3.0
117.2	Kelantan	119.8	▲ 2.6
119.4	Perak	121.4	▲ 2.0
117.0	Sabah	118.9	▲ 1.9
116.5	Perlis	118.4	▲ 1.9
117.5	Melaka	118.4	▲ 0.9
115.4	Selangor	116.2	▲ 0.8
116.7	Terengganu	117.0	▲ 0.3
117.7	Pahang	117.9	▲ 0.2
119.1	Sarawak	119.3	▲ 0.2
116.0	Wilayah Persekutuan	116.1	▲ 0.1
117.6	Pulau Pinang	117.6	■ 0.0
119.7	Johor	119.4	▼ -0.3
120.1	Negeri Sembilan	119.5	▼ -0.6

**Exhibit 5: Environmental Well-being Subcomposite Index by state, 2023 and 2024**

2023	State	2024	Change of Index Points
101.7	Negeri Sembilan	106.4	▲ 4.7
90.0	Sarawak	94.1	▲ 4.1
97.6	Pahang	101.5	▲ 3.9
106.1	Kelantan	106.9	▲ 0.8
99.3	Johor	99.6	▲ 0.3
103.9	Terengganu	103.9	■ 0.0
98.8	Pulau Pinang	98.6	▼ -0.2
102.5	Selangor	102.3	▼ -0.2
94.1	Melaka	93.8	▼ -0.3
105.9	Sabah	105.2	▼ -0.7
96.2	Kedah	94.1	▼ -2.1
89.6	Perlis	87.3	▼ -2.3
98.2	Wilayah Persekutuan	94.7	▼ -3.5
99.1	Perak	90.0	▼ -9.1

Note: Baseyear MyWI (2010=100)

Released by:

**THE OFFICE OF CHIEF STATISTICIAN MALAYSIA**

**DEPARTMENT OF STATISTICS MALAYSIA**

**19 DECEMBER 2025**