



PRIME MINISTER'S DEPARTMENT
DEPARTMENT OF STATISTICS MALAYSIA

ISSN 2735-1831



LABOUR FORCE STATISTICS REPORT

APRIL 2022

JABATAN PERANGKAAN MALAYSIA
DEPARTMENT OF STATISTICS MALAYSIA



PRIME MINISTER'S DEPARTMENT
DEPARTMENT OF STATISTICS MALAYSIA

LABOUR FORCE REPORT MALAYSIA APRIL 2022

Announcement:

Department of Statistics Malaysia is conducting the Household Income, Expenditure and Basic Amenities Survey (HIES/BA) 2022 from 1st January 2022 until 31st December 2022 and the Annual Economic Survey (AES) 2022 from 15th April 2022 until 30th September 2022. DOSM greatly appreciates the cooperation given by selected respondents by sharing their information with DOSM and making the survey a success. Please visit www.dosm.gov.my for more information.

Economic and social statistics publication namely PocketStats which contain quarterly and annual statistics can be obtained from the DOSM portal or via the link <https://bit.ly/PocketStatsQ1 2022>.

Please be informed that the Government of Malaysia has declared
National Statistics Day (MyStats Day) on October 20 each year.

MyStats Day theme is
“Connecting the World with Data We Can Trust”.

Published and printed by:

Department of Statistics Malaysia

Block C6, Complex C,
Federal Government Administrative Centre,
62514 Putrajaya,
MALAYSIA

Tel.	: 03-8885 7000
Fax	: 03-8888 9248
Portal	: https://www.dosm.gov.my
Facebook / Twitter / Instagram	: StatsMalaysia
Email	: info@dosm.gov.my (general enquiries) data@dosm.gov.my (data request & enquiries)

Published on 09 June 2022

All rights reserved.

No part of this publication may be reproduced or distributed in any form or by any means or stored in data base without the prior written permission from Department of Statistics, Malaysia.

Users reproducing content of this publication with or without adaptation should quote the following:
"Source: Department of Statistics Malaysia"

eISSN 2735 - 1831

PREFACE

The monthly Labour Force Report, Malaysia, presents the statistics of labour force, employment, and unemployment obtained from the Labour Force Survey (LFS). The implementations of the LFS are based on the guidelines and recommendations of the International Labour Organization (ILO) with reference to the Surveys of Economically Active Population, Employment, Unemployment and Underemployment: An ILO Manual on Concepts and Methods.

The labour force statistics are used as a vital input for labour market analysis, policy formulation as well as planning, implementing, and monitoring programmes particularly related to human resource development. These statistics also serve as an essential reference to researchers, economists, academicians, private sector, and individuals in research related to employment and the labour market.

The Labour Force Report for April 2022 describes the labour supply situation as the country was in the transition phase to endemic. The report also elaborates on the month-on-month changes to examine the immediate effects of recent events. In addition, annual changes from the same month of the previous year are also reported.

The Department of Statistics Malaysia gratefully acknowledges the cooperation and contribution rendered by all parties in making this publication a success. Every feedback and suggestion towards improving future reports are highly appreciated.

DATO' SRI DR. MOHD UZIR MAHIDIN

Chief Statistician Malaysia

June 2022

This page is deliberately left blank

CONTENTS

	PAGE
Contents	i
Glossary	ii
Acronyms	iv
Infographic	v

Key Reviews	1
1. Introduction	2
2. Employment	2
3. Unemployment	4
4. Labour Force	5
5. Outside Labour Force	6
6. Government Initiatives	7
7. Looking Ahead	8

List of Tables

Table A	: Principal statistics of labour force, Malaysia, 1982 - 2021	A-1
Table B	: Principal statistics of labour force, Malaysia, First Quarter 2010 - First Quarter 2022	A-2
Table B1	: Employed person working less than 30 hours by sex and age group, Malaysia, First Quarter 2017 - First Quarter 2022	A-3
Table B2	: Time-related underemployment by sex and age group, Malaysia, First Quarter 2017 - First Quarter 2022	A-4
Table B3	: Skill-related underemployment by sex and age group, Malaysia, First Quarter 2017 - First Quarter 2022	A-5
Table C	: Principal statistics of labour force, Malaysia, January 2010 - April 2022	A-6
Table C1	: Seasonally adjusted of principal statistics of labour force, Malaysia, January 2010 - April 2022	A-10
Table C2	: Number of unemployed persons by category and duration of unemployment, January 2016 - April 2022	A-14
Table C3	: Unemployment youth and youth unemployment rate by selected age group, January 2016 - April 2022	A-16
Table C4	: Employed persons by status in employment, January 2016 - April 2022	A-18
Table D	: Employed persons by occupation, Malaysia, 1982 - 2021	A-20
Table E	: Employed persons by industry, Malaysia, 1982 - 2021	A-21
Table F	: Employed persons by status of employment, Malaysia, 1982 - 2021	A-23
Table G	: Labour force indicators for selected countries, April 2021 - April 2022	A-24

GLOSSARY

Actively unemployed	: Persons who were available for work and were actively looking for work during the reference week.
Category of skills	: For reporting purpose, the category of occupation is regrouped into three levels of skills based on the Malaysia Standard Classification of Occupation (MASCO) 2013 as below: <ul style="list-style-type: none"> Skilled workers: <ul style="list-style-type: none"> 1. Managers; 2. Professionals; and 3. Technicians and associate professionals. Semi-skilled workers: <ul style="list-style-type: none"> 4. Clerical support workers; 5. Services and sales workers; 6. Skilled agricultural, forestry, livestock, and fishery workers; 7. Craft and related trades workers; and 8. Plant and machine operators and assemblers. Low-skilled workers: <ul style="list-style-type: none"> 9. Elementary occupations. <p>Starting on January 2022, the category of occupation is based on the Malaysia Standard Classification of Occupation (MASCO) 2020 with an addition of group 0 - Armed forces occupations.</p>
Economic activity	: Classification of industries according to the Malaysia Standard Industrial Classification (MSIC) 2008 version 1.0 into five main sectors namely Agriculture, Mining & Quarrying, Manufacturing, Construction and Services. In the meantime, Manufacturing and Services are further disaggregated into subsectors.
Employed	: All persons who, at any time during the reference week worked at least one hour for pay, profit or family gain either as an employer, employee, own-account worker or unpaid family worker.
Employee	: A person who works for a public or private employer and receives regular remuneration in wages, salary, commission, tips or payment in kind.
Employer	: A person who operates a business, a plantation or other trade and employs one or more workers to help him.
Employment-to-population ratio	: The proportion of employed population to working-age population.
Inactively unemployed	: Did not look for work because they believed no work was available or that they were not qualified; Would have looked for work if they had not been temporarily ill or had it not been for weather condition; and had looked for work prior to the reference week and were waiting for result of job applications.

Labour force	: Labour force refers to population in the working age group (15 to 64 years) who are either employed or unemployed.
Labour force participation rate	: The ratio of labour force to the working-age population, expressed as a percentage.
Outside labour force	: All persons not classified as employed or unemployed are classified as outside labour force. This category consists of housewives, students (including those going for further studies), retired, disabled persons and those not interested in looking for a job.
Own account worker	: A person who operates his own farm, business or trade without employing any paid workers in the conduct of his farm, trade or business.
Skill-related underemployment	: Those with tertiary education and working in the semi-skilled and low-skilled categories.
Time-related underemployment	: A group of people who employed less than 30 hours during the reference week because of the nature of their work or due to insufficient work and are able and willing to accept additional hours of work. Persons who were employed more than 30 hours during the reference week are considered to be in full employment.
Unemployed	: Those who did not work during the reference week but are interested to work and seeking for a job. Classified into two groups which are actively and inactively unemployed.
Unemployment rate	: The proportion of the unemployed population to the total population in labour force, expressed as a percentage.
Unpaid family worker	: A person who works without pay or wages on a farm, business or trade operated by another member of the family.

ACRONYMS

AF	: Agrofood Facility
BNM	: Bank Negara Malaysia
CATI	: Computer Assisted Telephone Interview
CENDANA	: Cultural Economy Development Agency
DanaNITA	: Special Business Financing Scheme for Women
DOSM	: Department of Statistics, Malaysia
DPGS	: Danajamin Prihatin Guarantee Scheme
ILO	: International Labour Organizations
KPT-CAP	: Career Advancement Programme
LFPR	: Labour Force Participation Rate
LFS	: Labour Force Survey
LI	: Leading Index
MARA	: Majlis Amanah Rakyat
MDEC	: Malaysia Digital Economy Corporation
MTCs	: Technical and Digital Mid-tier Companies
MYR	: Malaysian Ringgit
MYWiT	: MyDigitalWorkforce Work in Tech
PenjanaKerjaya	: Recruitment Incentive Programme
ProSPEC	: Professional Financing Scheme
PROTEGE	: Professional Training and Education for Growing Entrepreneurs
PRUV-ATM	: ATM Veteran Reskilling & Upskilling Programme
PSU	: Wage Subsidy Programme
PUTEK	: Technical Entrepreneur Development Programme
PUTRA	: Youth/ MARA Educational Institution Graduate Entrepreneur Programme
SGD	: Singapore Dollar
SMEs	: Small and Medium Enterprise
SOCSSO	: Social Security Organisation
SPN	: National Apprenticeship Scheme
SPUMI	: Indian Community Entrepreneur Development Scheme
TRRF	: Targeted Relief and Residual Facility
US	: United States



PRIME MINISTER'S DEPARTMENT
DEPARTMENT OF STATISTICS MALAYSIA



LABOUR FORCE MALAYSIA, APRIL 2022

April's unemployment rate dipped to 3.9 per cent, below 4.0 per cent for the first time since the COVID-19 outbreak

LABOUR FORCE



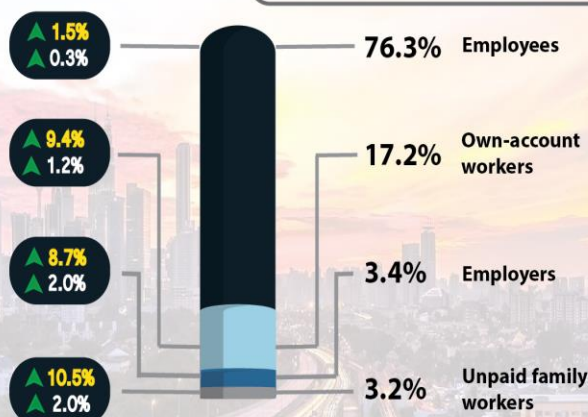
69.4% ▲ 0.8pp
▲ 0.2pp

April's labour force participation rate was further strengthened by 0.2 percentage points to 69.4 per cent

EMPLOYED PERSON



Employed person by status in employment



The employee's category made up the largest composition of employed person at 76.3 per cent

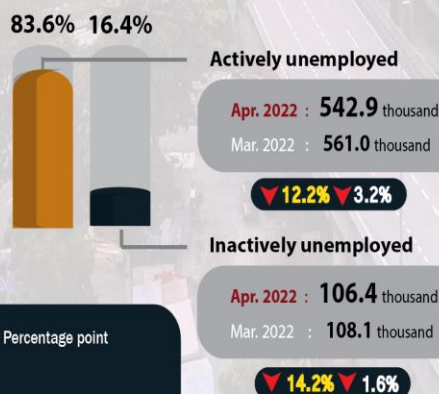
All categories registered positive month-on-month growth in April 2022

UNEMPLOYMENT



3.9% ▼ 0.7pp
▼ 0.2pp

The unemployment rate declined below 4.0 per cent for the first time to record 3.9 per cent



OUTSIDE LABOUR FORCE



The largest composition of outside labour force was housework/ family responsibilities



SCHOOLING/ TRAINING

40.6%



HOUSEWORK/ FAMILY RESPONSIBILITIES

42.0%

% Percentage change (year-on-year)
pp Percentage point
% Percentage change (month-on-month)

Source: Labour Force Survey, Department of Statistics Malaysia (DOSM)



PRIME MINISTER'S DEPARTMENT
DEPARTMENT OF STATISTICS MALAYSIA



CONCEPTS AND DEFINITIONS



What is Labour Force Survey (LFS)?

Labour Force Survey (LFS) was conducted to collect information on the structure and distribution of labour force, employment and unemployment from the perspective of labour supply.

LFS encompasses both urban and rural areas for all administrative districts within all states in Malaysia using multi-modal data collection approach through the personal interview and a Computer-Assisted Telephone Interview (CATI).

The LFS are conducted based on the standard guidelines and recommendations of the International Labour Organizations (ILO).

The survey population comprises persons who live in the private living quarters, hence excludes persons residing in institutions such as hotels, hospitals, hostels, prisons, and workers residing in construction worksite.

The working age for the analysis of LFS in Malaysia refers to household members between the age of 15 to 64 years during the reference week, who are either in the labour force or outside the labour force.

LABOUR FORCE

- The population in the working age group of 15 to 64 years (in completed years at last birthday).
- Either employed or unemployed in the reference week.

EMPLOYED

- Persons who, at any time during the reference week worked at least one hour for pay, profit or family gain (as an employer, employee, own-account worker or unpaid family worker).
- Persons who did not work during the reference week because of illness, injury, bad weather, leave, labour dispute and social or religious reasons but had a job, farm, enterprise or other family enterprise to return to.
- Those on temporary lay-off with pay who would definitely be called back to work.

UNEMPLOYED

- Those who did not work during the reference week but are interested to work and seeking for a job.
- Classified into two groups which are actively and inactively unemployed.

OUTSIDE LABOUR FORCE

- All persons not classified as employed or unemployed.
- Example: housewives, students, retirees, disabled persons and those not interested in looking for a job.

UNEMPLOYMENT RATE

- The proportion of the unemployed population to the total population in labour force.
- Percentage of the unemployed population in the labour force.

LABOUR FORCE PARTICIPATION RATE

- The economic activity of a population depends on the demographic characteristics of that population.
- The proportion of the economically active population, hence differs between sub-groups of that population.
- These variations are measured by specific activity rates termed as labour force participation rate.
- Labour force participation rate is defined as the ratio of the labour force to the working age population (15 to 64 years), expressed as a percentage.

SEASONAL ADJUSTMENT

- Time-series data are very useful for economist, policy & decision makers and time-series analysts to identify the important features of economics series such as direction, turning point and consistency between other economic indicators. Sometimes this feature is difficult to observe because of seasonal movements. Thus, if seasonal effect can be removed, the behaviour of the series would be better viewed. The estimation and removal of the seasonal effects is called seasonal adjustment.
- Seasonal adjustment is a process to identify and to remove the regular within-a-year seasonal pattern, which may also include the influences of moving holidays and working/trading days effect in each period. The ultimate objective of the process is to highlight the underlying trends and short-term movements in the series.
- In Malaysia, most of the time series data are affected by seasonal effects. Hence, to eliminate the seasonal effect as well as to seasonally adjust the Malaysian economic time series data, a standard seasonal adjustment package, X-12 ARIMA was used by Department of Statistics, Malaysia.

Source: Labour Force Survey, Department of Statistics Malaysia (DOSM)

KEY REVIEWS

- **Employed persons remained on a positive trend with a month-on-month increase of 0.5 per cent or equivalent to 84.1 thousand persons** to record 15.85 million persons in April 2022 (March 2022: 15.77 million persons). Similarly, in terms of seasonally adjusted, the number of employed persons heightened by 0.6 per cent. **The employment-to-population ratio which indicates the ability of an economy to create employment augmented by 0.3 percentage points to record 66.7 per cent** as compared to 66.4 per cent in March 2022.
- By economic sector, the number of employed persons in Services sector sustained the positive trend particularly in Wholesales & retail trade; Food & beverage services and Human health & social work activities. The number of employed persons in Manufacturing and Construction sectors also continued to increase. The Agriculture sector recorded an increase in the number of employed persons for the first time in April after 22 consecutive months of month-on-month decline. In the meantime, the Mining & quarrying sector continued to record a reduction in employment.
- The **employee's category** which made up the largest composition of employed person at **76.3 per cent**, improved by 0.3 per cent month-on-month to **12.09 million persons** (March 2022: 12.06 million persons). Similarly, the **own-account workers** continued to increase with an addition of 31.9 thousand (+1.2%) persons to **2.72 million persons** in April 2022 (March 2022: 2.69 million persons). The increase was partly due to more business activities in conjunction with the celebration of Ramadan and preparation for Aidilfitri during the month parallel with the reopening of international border which encouraged the tourism sector and tourism-related industries to resume their activities.
- In April 2022, the number of **unemployed persons continued to trend down** for nine consecutive months, registering a fall of **3.0 per cent** or equivalent to **19.9 thousand persons to 649.3 thousand unemployed persons** (March 2022: 669.2 thousand persons). Meanwhile, on a seasonally adjusted terms, the number of unemployed persons went down by 4.1 per cent. Hence, the **unemployment rate** declined to below 4.0 per cent for the first time to record **3.9 per cent** (March 2022: 4.1%) after two years of the COVID-19 pandemic in the country. Seasonally adjusted estimates for the April's unemployment rate indicated a month-on-month decline by 0.2 percentage points to 3.9 per cent.
- In April 2022, the number of **labour force** recorded a **surge of 0.4 per cent (+64.3 thousand persons)** month-on-month to **16.50 million persons** (March 2022: 16.44 million persons). Accordingly, April's labour force participation rate (LFPR) **strengthened further by 0.2 percentage points to 69.4 per cent** (March 2022: 69.2%), indicating more labour participation in the market. In terms of seasonally adjusted estimates, the number of labour force increased by 0.4 per cent while LFPR rose by 0.3 percentage points.
- Following the shift into the phase of transition to endemic in April 2022, the number of persons **outside labour force continued to decline** with a reduction of **39.5 thousand persons (-0.5%)** to record **7.27 million persons** (March 2022: 7.31 million persons). The largest composition of outside labour force was **housework/ family responsibilities** with 42.0 per cent and followed by **schooling/ training category** (40.6%).
- Moving forward, the increase in employers' applications for non-citizen employment following the reopening of the country's international borders is anticipated to be able to ease the labour shortages issues especially in the Construction and Agriculture sectors; and subsequently further stimulate the country's labour market situation. Furthermore, the inflow of international tourist could also contribute to the revival of the tourism industry particularly in the accommodation sub-sector. Besides the negativity of the depreciation of the Malaysian Ringgit against the US Dollar towards the economy, it may initiate a positive impact on the tourism sector in terms of lower cost for tourists and it will make the country as a preferred holiday destination. Tourists spending also may facilitate small businesses to rebound after a two-year period of difficulties due to pandemic. This situation is seen to open up more job opportunities since business activities require more workers to accommodate the growing demand for goods and services. Thus, the labour market is foreseen to be able to sustain its resiliency in the months to come.

1 LABOUR MARKET CONDITION IN APRIL 2022 WAS FURTHER STRENGTHENED WITH THE CONTINUOUS INCREASE IN EMPLOYMENT, WHILE THE UNEMPLOYMENT REMAINED ON A DECLINING TREND AS ALL ECONOMIC ACTIVITIES STARTED TO BOOM

At the beginning of April 2022, Muslims all over the world including Malaysia celebrated the holy month of Ramadan. Apart from the health and spiritual benefits, Ramadan also contributed in generating positive impacts to the economy as more bazaars are reopened after the hardship faced during the pandemic. The operation of the Ramadan and Aidilfitri bazaar may provide more opportunities, especially to the new and existing businesses to commence their operation. Moreover, as Malaysia started to reopen the country's border to the public effective from 1 April 2022 has stimulated the economy particularly in the tourism and tourism related industries as it encourages the inflow of international tourists into the country either for business or leisure as well as provide opportunity for the local to travel domestically and abroad.

According to Menteri Besar of Johor, Dato' Onn Hafiz Ghazi, the reopening of the Malaysia-Singapore borders on 1 April 2022 enhanced businesses in Johor, with thousands of Singaporeans entering the state for shopping¹. In addition, the depreciation of Malaysian Ringgit (MYR) against Singapore Dollar (SGD) will encourage more Singaporeans to visit Malaysia. Singaporeans have more purchasing power due to the strength of the SGD and would continue to shop in Malaysia. While many consider the depreciation of MYR as something negative, on the other side of the coin, it would benefit small businesses and traders to increase their earnings after two challenging years of the pandemic. Thus, the reopening of the border is seen as a positive development for the country's economy since it may help in reviving the tourism industry which was the most affected industry during the plague. After an encouraging economic growth of 5.0 per cent in the first quarter of 2022 supported by the strengthening of domestic demand, economic activity continued to flourish in April 2022.

Therefore, demand for labour continued to expand to accommodate the capacity for business operations. This opened up more job opportunities for the jobseekers and subsequently helped in stimulating the labour market. Consequently, as all economic activities started to boom, the labour market condition in April 2022 further strengthened with the continuous increase in employment, while the unemployment remained on a declining trend reflecting the favourable outcome from the reopening of the international border towards Malaysia's economy. In the meantime, the Leading Index (LI) maintained its upward trend in March 2022, rising by 0.4 per cent to 111.3 points from 110.9 points in February 2022, implying that Malaysia's economic recovery will continue to be resilient. However, as compared to March 2022, both export and import of the monthly external trade indicators in April 2022 posted a decline by 3.1 per cent (March 2022: +28.6%) and 0.9 per cent (March 2022: +27.2%) respectively, after registering a double-digit growth in the preceding month.

2 Positive trend of employed persons remained in April 2022

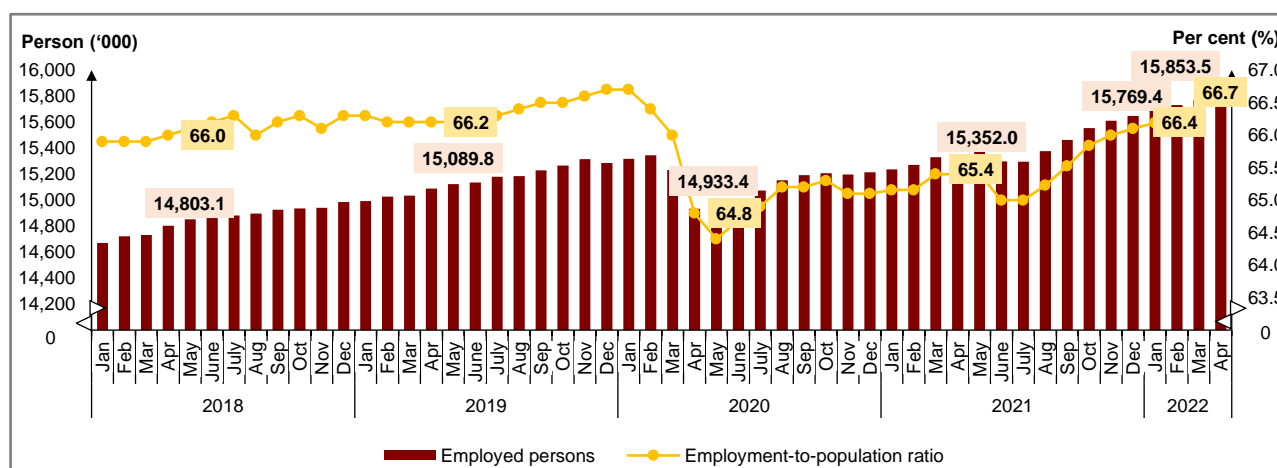
Employed persons remained on a positive trend with a month-on-month increase of 0.5 per cent or equivalent to 84.1 thousand persons to record 15.85 million persons in April 2022 (March 2022: 15.77 million persons). Similarly, in terms of seasonally adjusted, the number of employed persons heightened by 0.6 per cent. In the meantime, year-on-year comparison, the number of employed persons continued to rise by 3.3 per cent or equivalent to 501.5 thousand persons (April 2021: 15.35 million persons).

¹ <https://www.malaymail.com/news/malaysia/2022/04/30/malaysia-singapore-border-reopening-a-boon-to-johors-economy-says-mb/2056488>

By economic sector, the number of employed persons in Services sustained the positive trend particularly in Wholesales & retail trade; Food & beverage services and Human health & social work activities. The number of employed persons in Manufacturing and Construction sectors also continued to increase. The Agriculture sector recorded an increase in the number of employed persons for the first time in April after 22 consecutive months of month-on-month decline. In the meantime, the Mining & quarrying sector continued to record a reduction in employment.

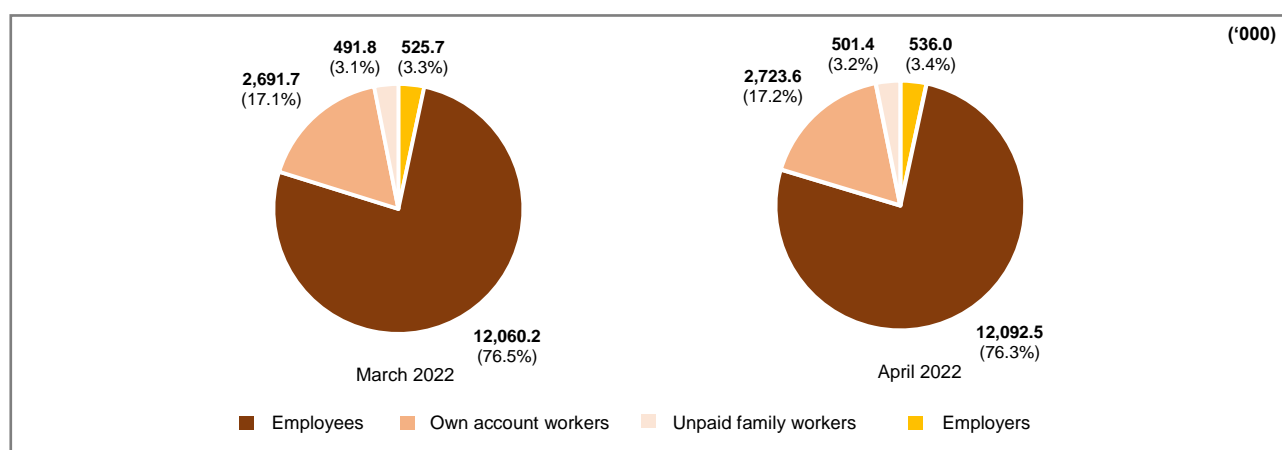
The employment-to-population ratio which indicates the ability of an economy to create employment **augmented by 0.3 percentage points to 66.7 per cent** as compared to 66.4 per cent in March 2022. Likewise, on yearly basis, the ratio was higher by 1.3 percentage points from 65.4 per cent (April 2021). [Chart 1]

Chart 1: Employed persons and employment-to-population ratio, January 2018 - April 2022



The **employee's category** which made up the largest composition of employed persons at **76.3 per cent**, improved by 0.3 per cent month-on-month to **12.09 million persons** (March 2022: 12.06 million persons). Similarly, the **own-account workers** continued to increase with an addition of 31.9 thousand persons (+1.2%) to **2.72 million persons** in April 2022 (March 2022: 2.69 million persons). The increase was partly due to more business activities in conjunction with the celebration of Ramadan and preparation for Aidilfitri during the month together with the reopening of international border which encouraged the tourism sector and tourism-related industries to resume their activities. This group comprises mostly of daily income earners working as small business operators such as retailers; hawkers; sellers in markets and stalls; as well as smallholders. [Chart 2]

Chart 2: Employed person by status in employment, March and April 2022



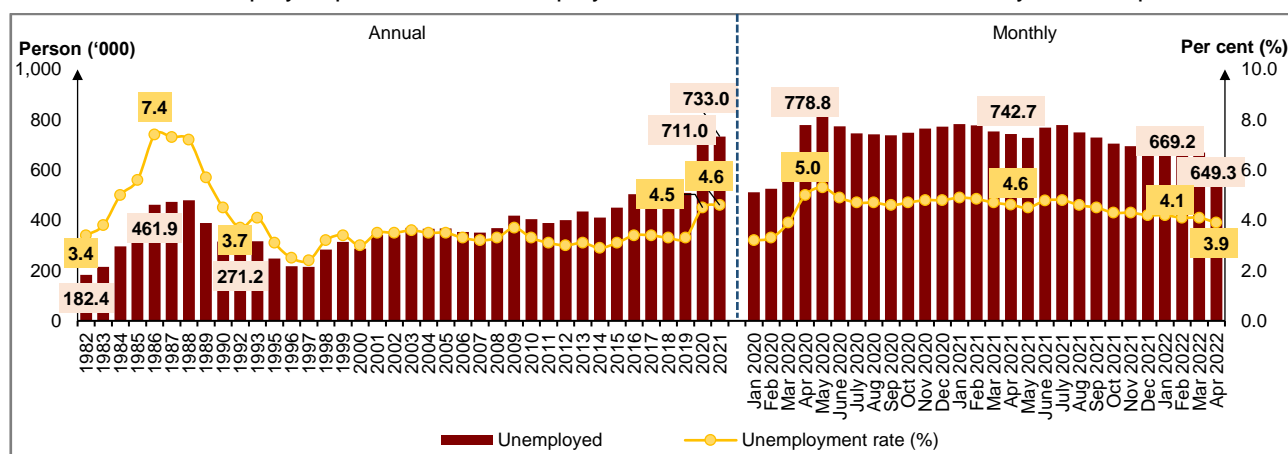
The number of employed persons who were temporarily not working recorded a decline of **6.0 per cent or 5.6 thousand persons** to **88.3 thousand persons** as against to the previous month (March 2022: 93.9 thousand persons). Similar trend was observed on the year-on-year basis, which recorded a fall of 27.7 thousand persons as compared to 116.0 thousand persons in April 2021. This group of persons, who were most likely not able to work were not categorised as unemployed as they had work to return to.

3 April's unemployment rate declined to below 4.0 per cent for the first time to record 3.9 per cent

In April 2022, the number of **unemployed persons continued to trend down** for nine consecutive months, registering a fall of **3.0 per cent** or equivalent to **19.9 thousand persons** to **649.3 thousand unemployed persons** (March 2022: 669.2 thousand persons). Meanwhile, on seasonally adjusted terms, the number of unemployed persons went down by 4.1 per cent. Hence, the **unemployment rate** declined to below 4.0 per cent for the first time to record **3.9 per cent** (March 2022: 4.1%) after two years of the COVID-19 pandemic in the country. Seasonally adjusted estimates for April's unemployment rate indicated a month-on-month decline by 0.2 percentage points to 3.9 per cent.

Year-on-year comparison, the number of unemployed persons reduced by 12.6 per cent or 93.4 thousand persons (April 2021: 742.7 thousand persons). The unemployment rate dropped by 0.7 percentage points as compared to April 2021 (4.6%). **[Chart 3]**

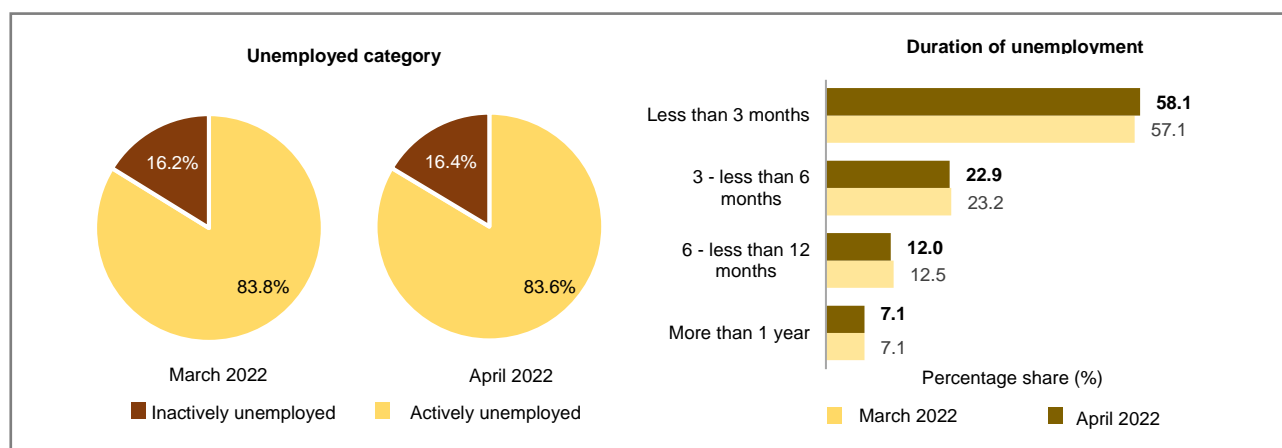
Chart 3: Unemployed persons and unemployment rate, 1982 - 2021 and January 2020 - April 2022



By unemployment category, most of the unemployed persons were the **actively unemployed** or those who were available for work and were actively seeking jobs. This category which comprised **83.6 per cent** of the total unemployed persons, registered a decline of **3.2 per cent (-18.1 thousand persons)** to **542.9 thousand persons** (March 2022: 561.0 thousand persons). Out of the total actively unemployed, **58.1 per cent** were those who were **unemployed persons for less than three months**, while **7.1 per cent** were those who were in **long-term unemployment** of more than a year². Meanwhile, those who believed that there were no jobs available or the **inactively unemployed continued to decrease** by **1.6 per cent (-1.7 thousand persons)** registering **106.4 thousand persons** (March 2022: 108.1 thousand persons). **[Chart 4]**

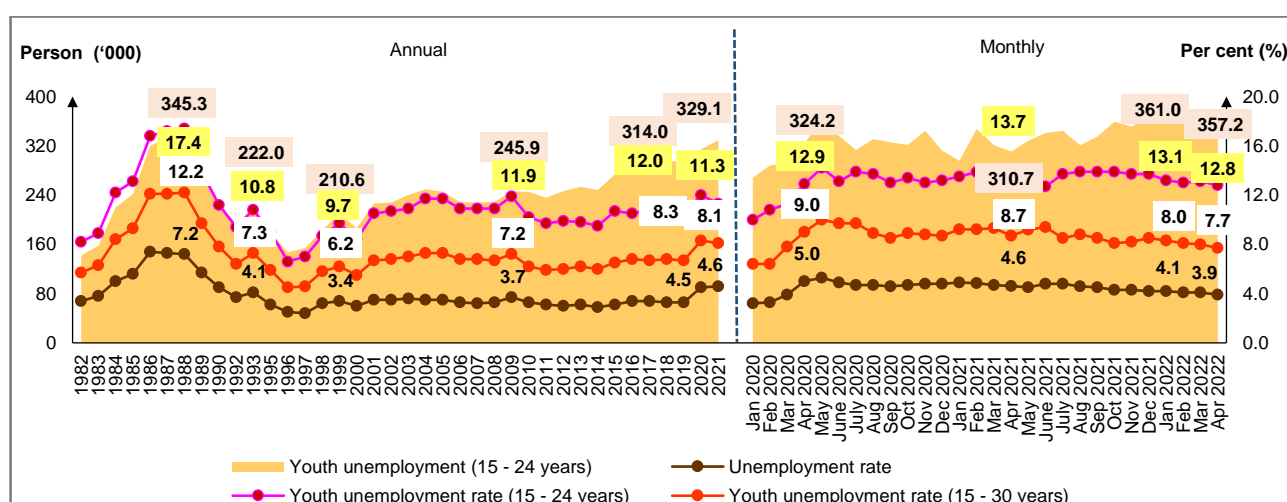
² Referring to people who have been unemployed for one year or longer (Source: KILM 11: long-term Unemployment)
https://www.ilo.org/wcmsp5/groups/public/---dgreports/---stat/documents/publication/wcms_422451.pdf

Chart 4: Unemployed category and duration of unemployment, March and April 2022



The **unemployment rate for youth aged 15 to 24 years edged down by 0.3 percentage points to 12.8 per cent** with the number of unemployed youths lessened by 3.8 thousand persons or 1.1 per cent to record 357.2 thousand persons (March 2022: 361.0 thousand persons). Likewise, the unemployment rate for youth aged **15 to 30 years decreased by 0.3 percentage points to 7.7 per cent**, with the number of unemployed youths declining by 0.2 per cent (-1.2 thousand persons) of to 501.2 thousand persons (March 2022: 8.0%; 502.4 thousand persons). **[Chart 5]**

Chart 5: Unemployment rate by selected age groups, 1982 - 2021 and January 2020 - April 2022

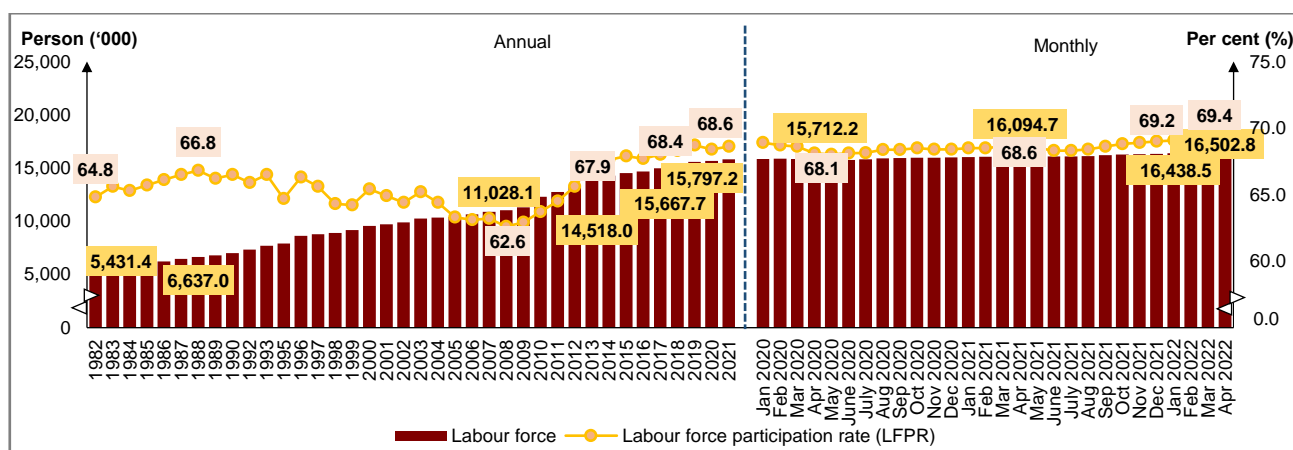


4 April's LFPR rose by 0.2 percentage points to 69.4 per cent

In April 2022, the number of **labour force** recorded a **surge of 0.4 per cent (+64.3 thousand persons)** month-on-month to **16.50 million persons** (March 2022: 16.44 million persons). Therefore, April's labour force participation rate (LFPR) **strengthened further by 0.2 percentage points to 69.4 per cent** (March 2022: 69.2%), indicating more labour participation in the market. In terms of seasonally adjusted estimates, the number of labour force increased by 0.4 per cent while LFPR rose by 0.3 percentage points.

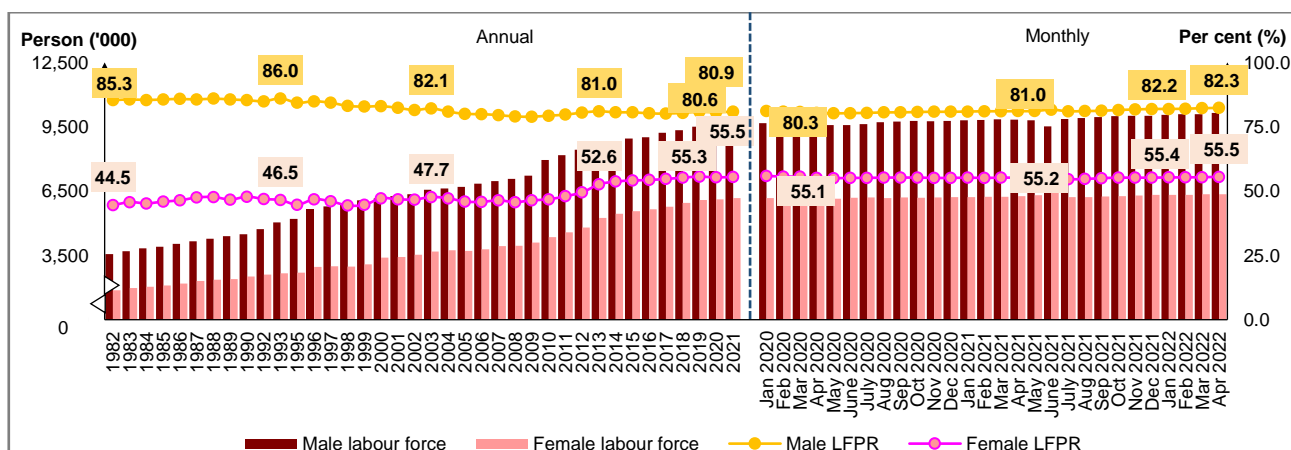
As compared to one year earlier, the number of labour force went up by 2.5 per cent or 408.1 thousand persons (April 2021: 16.09 million persons). The LFPR escalated by 0.8 percentage points as against 68.6 per cent in April 2021. **[Chart 6]**

Chart 6: Labour force and LFPR, 1982 - 2021 and January 2020 - April 2022



By gender comparison, **male labour force registered an increase during the month to 10.15 million persons** (March 2022: 10.08 million persons), while **female labour force increased marginally to record 6.36 million persons**. Therefore, both **male and female LFPR edged up by 0.1 percentage points to 82.3 per cent and 55.5 per cent** respectively. As compared to April 2021, male LFPR climbed by 1.3 percentage points (April 2021: 81.0%), whereas female LFPR rose by 0.3 percentage points (April 2021: 55.2%). [Chart 7]

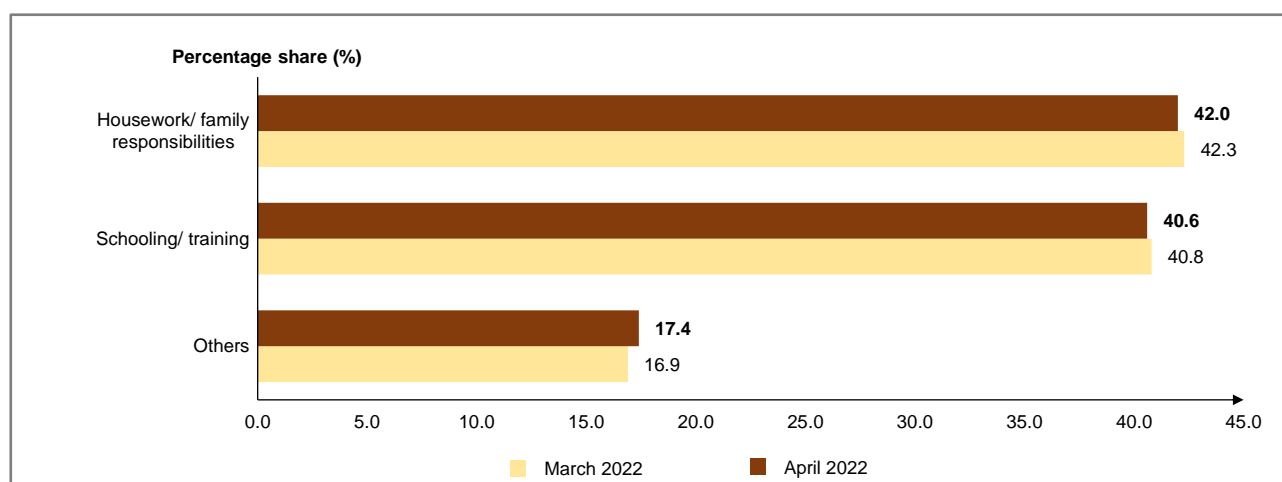
Chart 7: Labour force and LFPR by sex, 1982 - 2021 and January 2020 - April 2022



5 The largest composition of outside labour force was housework/ family responsibilities

Following the shift into the phase of transition to endemic in April 2022, the number of persons **outside labour force continued to decline** with a reduction of **39.5 thousand persons (-0.5%)** to record **7.27 million persons** (March 2022: 7.31 million persons). Year-on-year, this number lessened by 106.6 thousand persons or 1.5 per cent (April 2021: 7.38 million persons). The largest composition of outside labour force was **housework/ family responsibilities** with 42.0 per cent and followed by **schooling/ training category** (40.6%). [Chart 8]

Chart 8: Share of outside labour force by reasons for not seeking work, March and April 2022



6 GOVERNMENT'S INITIATIVES³

The Wage Subsidy Programme (PSU) is a financial aid paid to employers of each enterprise under the PRIHATIN Packages to assist employers to continue operate and retain employees. With a total approved value of RM12.96 billion as of 17 May 2022, PSU 1.0 has benefited 322,177 employers and 2.64 million registered employees. In addition, 81,155 employers received benefits of RM1.41 billion through PSU 2.0 under the Kita PRIHATIN Packages, allowing them to continue operating and retain 718,643 employees. Next, the PSU 3.0 was established to assist 162.3 thousand employers in retaining 1.53 million employees with a value of RM3.75 billion. Besides, RM2.53 billion was channelled to 161,572 employers and 1.9 million employees through PSU 4.0 under PEMULIH packages. Furthermore, through PSU 5.0, a total of RM165.4 billion was allocated to 7,077 employers in order to retain 100,663 employees.

In the meantime, as of 15 May 2022, a total of 15,176 employers and 116,404 employees had benefited from the Recruitment Incentive Programme (PenjanaKerjaya) with a total value of RM527.30 million under PenjanaKerjaya 1.0. There were 16,709 employers and 138,691 employees received an assistance of RM817.84 million under PenjanaKerjaya 2.0. Next, a total of RM512.39 million was channelled to 13,779 employers involving 84,608 employees under the PenjanaKerjaya 3.0 programme. Through the PenjanaKerjaya programme, the government provided RM1.85 billion to 45,664 employers, allowing them to retain 339,703 local employees. Moreover, the SOCSO's JaminKerja Keluarga Malaysia initiative had successfully placed 65,825 employees as of 30 April 2022. Additionally, the ATM Veteran Reskilling & Upskilling Programme (PRUV-ATM) which was specifically designed for retired army veteran, had provided skills and entrepreneurship training programmes to 8,736 veterans as of 30 April 2022.

Next, a total of 2,750 graduates were successfully placed through the Ministry of Higher Education's Career Advancement Program (KPT-CAP). In addition, a total of 2,479 fresh youths has been successfully placed using the JaminKerja Employment Incentive specifically for apprentices through the National Apprenticeship Scheme (SPN) under the Ministry of Youth and Sports in collaboration with other ministries such as the Ministry of Works and Ministry of Human Resources and Federal Agencies under all three ministries. As of 8 May 2022, MyDigitalWorkforce Work in Tech (MYWiT) had successfully placed 649 participants from 3,596 applicants in technology and digital services jobs. In

³ This segment is included in the report as a reference for reader based on the 95th and 96th Kewangan Rakyat Report of 21st and 27th May 2022 on the status of approvals, disbursements and registrations.

addition, the Professional Training and Education for Growing (PROTEGE) initiative through the Ministry of Entrepreneur Development and Cooperatives (MEDAC) for the implementation of the employability improvement programmes and foster entrepreneurial skills among graduates, there were 2,060 graduates were successfully placed as of 30 April 2022.

To empower businesses, MARA has approved a total of RM3.09 million for 350 new entrepreneurs as of 30 April 2022 under the Youth/ MARA Educational Institution Graduate Entrepreneur Programme (PUTRA), which was designed to provide financing facilities for micro businesses in all sectors, except agriculture and livestock farming, and to produce dynamic entrepreneurs among the younger generation who are eager to start a business. Additionally, a total of RM1.80 million has been channelled to 25 MARA technical entrepreneurs under the Technical Entrepreneur Development Programme (PUTEK), which was a financial facility for the younger generation to start a business in a technical field based on the abilities obtained under MARA. Next, as of 30 April 2022, a total of RM10 million was approved for Women's Special Business Financing Scheme (DanaNITA) to assist 265 women entrepreneurs who were affected by COVID-19 and to increase their business capacity. Besides, with an allocation of RM8.0 billion, the Targeted Relief and Residual Facility (TRRF) was issued as a lending facility to assist Small and Medium Enterprises (SMEs) that were affected in the services sector. A total of 20,800 SMEs was benefited from 34,330 applications, totalling RM5.62 billion as of 20 April 2022.

Moreover, 2,250 applications were approved from 2,978 total applications with an approved value of RM1.76 billion under the Agrofood Facilities (AF) provided by Bank Negara Malaysia (BNM), with the goal of driving the modernisation of the agricultural sector in order to increase food security and safety, generate higher income and attract more younger agropreneurs. Besides, through the Professional Financing Scheme (ProSPEC) under MARA, which aims to provide business facilities and increase the participation of Bumiputera entrepreneurs in the field of professional entrepreneurship, a total of RM2.8 million was approved for nine professionals to venture into entrepreneurship as of 30 April 2022. In addition, a total of RM12.07 million was channelled to support 596 Micro SMEs under the Indian Community Entrepreneur Development Scheme (SPUMI), a strategic programme under TEKUN meant to assist the Indian community in developing their economy through business and entrepreneurship.

In the meantime, as of 13 May 2022, a total of 404 applications out of 765 total application were approved involving RM82.73 million funds through the PENJANA Tourism Financing programme, which was specifically allocated for Bumiputera SMEs to support SMEs and micro-SMEs which were still affected by the COVID-19 pandemic. Also, a total of RM92.9 million had been channelled to 13,893 businesses in the form of grants and loans for digitalisation services subscriptions to support and encourage SMEs and Technical and Digital Mid-tier Companies (MTCs) to digitalise their operations and trade channels. Later, the CENDANA programme, which was aimed to support the Arts, Culture, and Entertainment Sector, a total of RM7.24 million were allocated to 589 recipients, including artists and organisations who were actively involved in the Malaysian Arts and Culture industry.

7 LOOKING AHEAD

The current economic climate is heavily influenced by the global supply chain disruption following the ongoing geopolitical crisis, a weather condition as well as China's strict COVID-19 containment action. In addition, certain countries had imposed ban on exports of selected goods in order to address shortages of products in the local market. On the contrary, improvement in demand following the ease of COVID-19 restrictions in most countries had also put pressure on the prices. In mitigating the higher inflation which is the main threat to the economic development, countries had started to adopt a stricter

monetary policy by raising the interest rate to stem the increasing prices and demand. As for Malaysia, BNM has raised the interest rate by 25 basis points on 11 May 2022 due to rising prices and increased domestic demand and stable export performance. In this regards, Malaysia's economic growth momentum could be hindered as inflation compromise demand while implementation of stringent monetary policy across countries may also affect products from Malaysia. This to some extent could also affect the positive trajectory of the national labour market.

However, a more positive economic outlook is observed as the country moved into the phase of transition to endemic. The increase in employers' applications for non-citizen employment following the reopening of the country's international borders is anticipated to be able to ease the labour shortages issues especially in the Construction and Agriculture sectors; and subsequently further stimulate the country's labour market situation. Furthermore, the inflow of international tourist could also contribute to the revival of the tourism industry particularly in the accommodation sub-sector. Besides the negativity of the depreciation of the MYR against the US Dollar towards the economy, it may also initiate positive impact on the tourism sector in terms of lower cost for tourists and it will make the country as a preferred holiday destination. Tourists spending also may facilitate small businesses to rebound after a two-year period of difficulties due to the pandemic. This situation is seen to open up more job opportunities since business activities require more workers to accommodate the growing demand for goods and services. Thus, the labour market is foreseen to be able to sustain its resiliency in the months to come. In line with the LI, which is an indicator for measuring the country's economic goals, shows that the short-term economy is expected to remain on the path of recovery.

This page is deliberately left blank

TABLES

LABOUR FORCE, MALAYSIA
APRIL 2022

This page is deliberately left blank

Table A: Principal statistics of labour force, Malaysia, 1982 - 2021

Time Series	('000)				(%)		
	Labour Force	Employed	Unemployed	Outside Labour Force	Labour Force Participation Rate	Employment to Population Ratio	Unemployment Rate
1982	5,431.4	5,249.0	182.4	2,944.6	64.8	62.7	3.4
1983	5,671.8	5,457.0	214.9	2,969.4	65.6	63.2	3.8
1984	5,862.5	5,566.7	295.8	3,119.6	65.3	62.0	5.0
1985	5,990.1	5,653.4	336.8	3,124.9	65.7	62.0	5.6
1986	6,222.1	5,760.1	461.9	3,188.3	66.1	61.2	7.4
1987	6,456.8	5,983.9	472.9	3,246.1	66.5	61.7	7.3
1988	6,637.0	6,157.2	479.8	3,301.5	66.8	62.0	7.2
1989	6,779.4	6,390.9	388.5	3,463.5	66.2	62.4	5.7
1990	7,000.2	6,685.0	315.2	3,519.7	66.5	63.6	4.5
1992	7,319.0	7,047.8	271.2	3,783.6	65.9	63.5	3.7
1993	7,700.1	7,383.4	316.8	3,874.9	66.5	63.8	4.1
1995	7,893.1	7,645.0	248.1	4,297.7	64.7	62.7	3.1
1996	8,616.0	8,399.3	216.8	4,379.0	66.3	64.6	2.5
1997	8,784.0	8,569.2	214.9	4,605.1	65.6	64.0	2.4
1998	8,883.6	8,599.6	284.0	4,934.0	64.3	62.2	3.2
1999	9,151.5	8,837.8	313.7	5,098.4	64.2	62.0	3.4
2000	9,556.1	9,269.2	286.9	5,065.1	65.4	63.4	3.0
2001	9,699.4	9,357.0	342.4	5,239.9	64.9	62.6	3.5
2002	9,886.2	9,542.6	343.5	5,473.8	64.4	62.1	3.5
2003	10,239.6	9,869.7	369.8	5,458.6	65.2	62.9	3.6
2004	10,346.2	9,979.5	366.6	5,730.5	64.4	62.1	3.5
2005	10,413.4	10,045.4	368.1	6,048.2	63.3	61.0	3.5
2006	10,628.9	10,275.4	353.6	6,205.1	63.1	61.0	3.3
2007	10,889.5	10,538.1	351.4	6,330.1	63.2	61.2	3.2
2008	11,028.1	10,659.6	368.5	6,575.7	62.6	60.6	3.3
2009	11,315.3	10,897.3	418.0	6,665.7	62.9	60.6	3.7
2010	12,303.9	11,899.5	404.4	7,023.0	63.7	61.6	3.3
2011	12,740.7	12,351.5	389.2	7,023.3	64.5	62.5	3.1
2012	13,221.7	12,820.5	401.2	6,927.4	65.6	63.6	3.0
2013	13,980.5	13,545.4	435.1	6,781.2	67.3	65.2	3.1
2014	14,263.6	13,852.6	411.1	6,821.0	67.6	65.7	2.9
2015	14,518.0	14,067.7	450.3	6,869.9	67.9	65.8	3.1
2016	14,667.8	14,163.7	504.1	6,987.6	67.7	65.4	3.4
2017	14,980.1	14,476.8	503.3	7,065.0	68.0	65.7	3.4
2018	15,280.3	14,776.0	504.3	7,094.4	68.3	66.0	3.3
2019	15,581.6	15,073.4	508.2	7,103.5	68.7	66.4	3.3
2020	15,667.7	14,956.7	711.0	7,225.5	68.4	65.3	4.5
2021	15,797.2	15,064.2	733.0	7,221.4	68.6	65.4	4.6

Table B: Principal statistics of labour force, Malaysia, First Quarter 2010 - First Quarter 2022

Time Series	('000)				(%)		
	Labour Force	Employed	Unemployed	Outside Labour Force	Labour Force Participation Rate	Employment to Population Ratio	Unemployment Rate
2010							
Q1	12,239.3	11,801.2	438.1	7,030.8	63.5	61.2	3.6
Q2	12,304.9	11,900.6	404.3	7,047.5	63.6	61.5	3.3
Q3	12,354.6	11,961.3	393.3	7,073.5	63.6	61.6	3.2
Q4	12,522.4	12,137.4	385.0	6,992.9	64.2	62.2	3.1
2011							
Q1	12,718.3	12,333.5	384.8	7,004.9	64.5	62.5	3.0
Q2	12,756.0	12,367.4	388.6	7,048.8	64.4	62.4	3.0
Q3	12,889.0	12,493.0	396.0	6,977.2	64.9	62.9	3.1
Q4	12,842.5	12,447.9	394.7	7,098.6	64.4	62.4	3.1
2012							
Q1	13,169.2	12,765.2	404.0	6,915.1	65.6	63.6	3.1
Q2	13,237.0	12,837.1	400.0	6,946.1	65.6	63.6	3.0
Q3	13,401.7	13,005.4	396.3	6,897.9	66.0	64.1	3.0
Q4	13,376.2	12,971.2	405.0	7,062.8	65.4	63.5	3.0
2013							
Q1	13,539.5	13,118.0	421.5	7,090.0	65.6	63.6	3.1
Q2	13,945.1	13,524.1	421.0	6,819.6	67.2	65.1	3.0
Q3	14,214.2	13,776.0	438.3	6,613.0	68.2	66.1	3.1
Q4	14,195.1	13,739.5	455.6	6,730.7	67.8	65.7	3.2
2014							
Q1	14,230.8	13,791.4	439.4	6,805.9	67.6	65.6	3.1
Q2	14,296.1	13,888.5	407.6	6,793.0	67.8	65.9	2.9
Q3	14,346.9	13,960.6	386.3	6,810.3	67.8	66.0	2.7
Q4	14,403.3	13,998.7	404.6	6,860.9	67.7	65.8	2.8
2015							
Q1	14,544.8	14,091.0	453.9	6,798.5	68.1	66.0	3.1
Q2	14,535.6	14,087.8	447.8	6,897.9	67.8	65.7	3.1
Q3	14,561.0	14,093.7	467.3	6,930.6	67.8	65.6	3.2
Q4	14,600.2	14,127.9	472.3	6,952.7	67.7	65.6	3.2
2016							
Q1	14,596.8	14,095.8	501.0	7,011.5	67.6	65.2	3.4
Q2	14,665.4	14,161.5	503.9	7,026.0	67.6	65.3	3.4
Q3	14,710.6	14,202.0	508.5	7,044.6	67.6	65.3	3.5
Q4	14,771.4	14,260.6	510.8	7,071.7	67.6	65.3	3.5
2017							
Q1	14,870.1	14,355.9	514.2	7,093.8	67.7	65.4	3.5
Q2	14,926.4	14,414.8	511.6	7,123.3	67.7	65.4	3.4
Q3	15,000.2	14,484.0	516.2	7,091.0	67.9	65.6	3.4
Q4	15,088.3	14,580.5	507.8	7,085.0	68.0	65.8	3.4
2018							
Q1	15,192.4	14,683.6	508.9	7,093.7	68.2	65.9	3.3
Q2	15,278.3	14,767.2	511.1	7,073.4	68.4	66.1	3.3
Q3	15,381.3	14,856.8	524.4	7,077.9	68.5	66.2	3.4
Q4	15,449.9	14,933.4	516.5	7,070.7	68.6	66.3	3.3
2019							
Q1	15,526.8	15,010.2	516.6	7,064.2	68.7	66.4	3.3
Q2	15,598.8	15,078.2	520.6	7,088.1	68.8	66.5	3.3
Q3	15,674.3	15,162.1	512.1	7,088.7	68.9	66.6	3.3
Q4	15,766.7	15,254.5	512.2	7,066.1	69.1	66.8	3.2
2020							
Q1	15,790.1	15,243.5	546.6	7,163.1	68.8	66.4	3.5
Q2	15,675.5	14,883.7	791.8	7,350.5	68.1	64.6	5.1
Q3	15,840.6	15,095.6	745.0	7,324.6	68.4	65.2	4.7
Q4	15,922.3	15,161.6	760.7	7,318.4	68.5	65.2	4.8
2021							
Q1	16,008.4	15,236.5	771.8	7,316.0	68.6	65.3	4.8
Q2	15,972.2	15,207.3	764.9	7,424.9	68.3	65.0	4.8
Q3	16,021.0	15,274.8	746.2	7,430.1	68.3	65.1	4.7
Q4	16,135.0	15,440.7	694.4	7,361.5	68.7	65.7	4.3
2022							
Q1	16,246.1	15,574.9	671.2	7,289.9	69.0	66.2	4.1

**Table B1 : Employed person working less than 30 hours by sex and age group, Malaysia,
First Quarter 2017 - First Quarter 2022**

								('000)
Time Series	Total	Sex		Age Group				
		Male	Female	15-24	25-34	35-44	45 and above	
2017								
Q1	415.5	177.3	238.2	57.4	79.7	90.8	187.6	
Q2	396.8	168.8	228.0	52.8	79.0	95.1	170.0	
Q3	393.0	163.2	229.7	57.3	91.1	81.4	163.1	
Q4	419.3	173.1	246.2	60.2	105.4	84.3	169.4	
2018								
Q1	462.3	172.9	289.3	61.2	119.5	98.7	182.9	
Q2	497.2	207.7	289.5	75.5	132.4	101.3	188.0	
Q3	442.4	172.7	269.7	56.4	96.7	98.3	191.0	
Q4	370.0	140.9	229.0	39.2	80.4	78.9	171.4	
2019								
Q1	352.6	143.7	209.0	52.2	90.9	68.9	140.7	
Q2	374.3	171.5	202.8	43.6	84.1	87.8	158.8	
Q3	326.6	118.9	207.6	42.5	73.6	79.7	130.8	
Q4	304.0	112.3	191.8	39.1	62.9	72.8	129.3	
2020								
Q1	667.5	320.1	347.4	91.0	189.1	146.5	240.9	
Q2	789.6	444.0	345.7	134.6	229.1	182.0	244.0	
Q3	403.8	151.4	252.4	116.1	118.0	72.1	97.6	
Q4	533.7	345.6	188.0	165.5	189.5	71.0	107.6	
2021								
Q1	441.9	281.3	160.5	57.0	209.4	106.3	69.2	
Q2	474.1	317.8	156.3	102.2	110.1	95.9	165.9	
Q3	464.6	282.9	181.6	69.0	166.4	123.7	105.4	
Q4	393.8	137.6	256.2	87.0	108.4	97.5	100.9	
2022								
Q1	336.3	112.1	224.1	39.1	103.6	77.8	115.8	

**Table B2 : Time-related underemployment by sex and age group, Malaysia,
First Quarter 2017 - First Quarter 2022**

								('000)
Time Series	Total	Sex		Age Group				
		Male	Female	15-24	25-34	35-44	45 and above	
2017								
Q1	211.8	105.9	105.8	36.8	51.0	48.6	75.4	
Q2	195.4	97.7	97.8	34.7	45.2	48.9	66.6	
Q3	224.8	109.1	115.7	46.3	59.3	49.8	69.4	
Q4	238.5	115.3	123.2	45.7	69.4	44.9	78.5	
2018								
Q1	242.5	102.4	141.0	37.3	74.1	52.3	79.7	
Q2	231.7	108.1	123.5	40.2	65.8	43.2	82.5	
Q3	235.5	116.5	119.0	43.4	54.4	49.4	88.3	
Q4	204.1	88.1	115.9	30.8	47.5	44.0	81.7	
2019								
Q1	210.5	98.0	112.5	43.6	61.4	36.9	68.6	
Q2	204.5	107.2	97.2	32.0	53.8	45.7	73.0	
Q3	178.7	70.4	108.2	28.6	44.8	50.9	54.4	
Q4	170.7	69.2	101.5	28.7	44.2	40.6	57.1	
2020								
Q1	383.2	183.2	199.9	63.2	114.1	82.4	123.5	
Q2	413.5	257.6	156.0	76.3	99.3	106.1	131.9	
Q3	300.8	102.3	198.5	108.4	97.2	47.4	47.8	
Q4	369.1	267.8	101.3	130.3	117.4	53.1	68.4	
2021								
Q1	310.5	226.7	83.8	46.4	159.3	67.2	37.6	
Q2	329.7	236.1	93.5	86.6	82.6	46.6	113.8	
Q3	326.2	232.2	93.9	40.4	137.0	87.7	61.0	
Q4	293.1	101.2	191.9	80.8	78.9	70.2	63.2	
2022								
Q1	245.1	71.3	173.8	21.8	76.1	62.6	84.5	

**Table B3 : Skill-related underemployment by sex and age group, Malaysia,
First Quarter 2017 - First Quarter 2022**

('000)							
Time Series	Total	Sex		Age Group			
		Male	Female	15-24	25-34	35-44	45 and above
2017							
Q1	1,182.9	567.0	615.9	280.8	569.0	209.3	123.8
Q2	1,280.6	584.9	695.7	317.9	587.7	226.9	148.1
Q3	1,311.6	623.9	687.7	306.1	632.6	227.4	145.5
Q4	1,332.8	648.4	684.4	303.2	631.8	254.8	142.9
2018							
Q1	1,306.9	629.2	677.7	279.2	629.2	259.0	139.5
Q2	1,408.1	647.2	760.9	314.5	687.4	257.7	148.4
Q3	1,446.3	704.1	742.2	351.3	683.3	266.9	144.8
Q4	1,404.0	667.8	736.2	337.2	679.1	245.4	142.3
2019							
Q1	1,460.8	673.2	787.6	329.5	696.4	263.0	172.0
Q2	1,417.2	665.3	751.9	338.6	666.0	259.7	152.8
Q3	1,554.5	699.3	855.2	393.5	705.8	279.1	176.0
Q4	1,540.9	746.8	794.1	348.4	732.4	287.4	172.7
2020							
Q1	1,637.3	815.1	822.2	338.3	786.3	310.8	201.8
Q2	1,674.1	847.7	826.4	393.7	701.9	331.6	246.9
Q3	1,762.7	865.9	896.9	405.1	811.4	355.3	190.9
Q4 ^r	1,886.8	1,066.6	820.2	353.5	862.6	443.0	227.6
2021							
Q1	1,899.9	951.5	948.4	437.2	848.4	401.7	212.5
Q2	1,852.5	949.0	903.5	336.9	776.0	426.1	313.5
Q3	1,873.8	931.7	942.2	426.8	835.3	392.0	219.7
Q4	1,838.3	877.1	961.2	309.0	816.4	454.6	258.3
2022							
Q1	1,810.1	874.4	935.6	364.9	821.3	428.2	195.7

Notes:

^r Revised

Table C: Principal statistics of labour force, Malaysia, January 2010 - April 2022

Time Series	('000)				(%)		
	Labour Force	Employed	Unemployed	Outside Labour Force	Labour Force Participation Rate	Employment to Population Ratio	Unemployment Rate
2010							
January	12,367.9	11,931.2	436.7	6,927.5	64.1	61.8	3.5
February	12,059.8	11,632.3	427.4	7,225.1	62.5	60.3	3.5
March	12,324.2	11,895.9	428.3	6,993.0	63.8	61.6	3.5
April	12,512.0	12,133.5	378.5	6,894.5	64.5	62.5	3.0
May	12,197.6	11,798.9	398.7	7,186.0	62.9	60.9	3.3
June	12,331.8	11,882.2	449.6	7,065.0	63.6	61.3	3.6
July	12,516.2	12,099.5	416.7	6,900.5	64.5	62.3	3.3
August	12,320.9	11,936.5	384.3	7,157.9	63.3	61.3	3.1
September	12,289.9	11,912.1	377.8	7,194.4	63.1	61.1	3.1
October	12,689.5	12,342.6	346.8	6,846.7	65.0	63.2	2.7
November	12,277.5	11,874.1	403.4	7,298.3	62.7	60.7	3.3
December	12,822.3	12,418.3	404.1	6,722.3	65.6	63.5	3.2
2011							
January	12,804.2	12,376.0	428.2	6,881.6	65.0	62.9	3.3
February	12,618.9	12,245.3	373.6	7,110.3	64.0	62.1	3.0
March	12,862.2	12,491.8	370.4	6,940.1	65.0	63.1	2.9
April	12,921.7	12,537.1	384.6	6,930.6	65.1	63.2	3.0
May	12,726.6	12,330.3	396.3	7,133.2	64.1	62.1	3.1
June	12,782.7	12,372.6	410.1	7,073.7	64.4	62.3	3.2
July	12,967.4	12,581.5	385.9	6,920.5	65.2	63.3	3.0
August	12,887.9	12,486.7	401.2	7,038.6	64.7	62.7	3.1
September	12,875.9	12,456.9	419.0	7,032.2	64.7	62.6	3.3
October	12,938.2	12,550.1	388.1	7,045.7	64.7	62.8	3.0
November	12,722.4	12,323.7	398.7	7,245.7	63.7	61.7	3.1
December	13,092.1	12,687.2	404.9	6,997.3	65.2	63.2	3.1
2012							
January	13,191.6	12,781.3	410.4	6,878.5	65.7	63.7	3.1
February	13,054.5	12,645.6	408.9	7,042.3	65.0	62.9	3.1
March	13,295.4	12,893.8	401.6	6,897.3	65.8	63.9	3.0
April	13,331.8	12,936.9	394.8	6,851.3	66.1	64.1	3.0
May	13,245.6	12,861.2	384.4	6,952.9	65.6	63.7	2.9
June	13,232.5	12,811.4	421.0	7,013.7	65.4	63.3	3.2
July	13,511.7	13,093.3	418.4	6,777.3	66.6	64.5	3.1
August	13,313.6	12,963.4	350.2	7,039.9	65.4	63.7	2.6
September	13,408.5	12,984.5	424.0	6,993.2	65.7	63.6	3.2
October	13,341.4	12,908.9	432.6	7,056.2	65.4	63.3	3.2
November	13,429.2	13,044.6	384.6	7,094.6	65.4	63.6	2.9
December	13,538.6	13,114.3	424.3	7,060.6	65.7	63.7	3.1
2013							
January	13,569.6	13,109.8	459.8	7,035.5	65.9	63.6	3.4
February	13,598.8	13,195.9	402.9	7,119.8	65.6	63.7	3.0
March	13,684.4	13,241.7	442.6	7,116.7	65.8	63.7	3.2
April	13,835.7	13,422.9	412.8	6,922.7	66.7	64.7	3.0
May	13,815.3	13,368.9	446.4	7,005.6	66.4	64.2	3.2
June	14,217.1	13,816.9	400.2	6,668.6	68.1	66.2	2.8
July	14,194.6	13,763.0	431.6	6,655.9	68.1	66.0	3.0
August	14,176.6	13,734.2	442.4	6,689.8	67.9	65.8	3.1
September	14,309.4	13,859.5	449.9	6,557.3	68.6	66.4	3.1
October	14,169.2	13,699.1	470.1	6,746.3	67.7	65.5	3.3
November	14,220.9	13,730.4	490.5	6,716.2	67.9	65.6	3.4
December	14,276.5	13,836.2	440.3	6,724.3	68.0	65.9	3.1

Table C: Principal statistics of labour force, Malaysia, January 2010 - April 2022

Time Series	('000)				(%)		
	Labour Force	Employed	Unemployed	Outside Labour Force	Labour Force Participation Rate	Employment to Population Ratio	Unemployment Rate
2014							
January	14,244.4	13,775.9	468.5	6,734.7	67.9	65.7	3.3
February	14,249.9	13,788.0	462.0	6,808.7	67.7	65.5	3.2
March	14,198.4	13,768.3	430.1	6,956.1	67.1	65.1	3.0
April	14,206.7	13,793.2	413.5	6,849.4	67.5	65.5	2.9
May	14,430.2	14,023.0	407.2	6,693.2	68.3	66.4	2.8
June	14,373.4	13,967.0	406.4	6,826.6	67.8	65.9	2.8
July	14,333.4	13,935.8	397.6	6,846.2	67.7	65.8	2.8
August	14,266.3	13,881.4	384.9	6,934.1	67.3	65.5	2.7
September	14,440.2	14,058.4	381.8	6,763.7	68.1	66.3	2.6
October	14,403.1	14,023.3	379.9	6,926.7	67.5	65.7	2.6
November	14,404.1	14,025.4	378.7	6,887.1	67.7	65.9	2.6
December	14,512.0	14,060.2	451.7	6,784.8	68.1	66.0	3.1
2015							
January	14,442.0	13,991.8	450.3	6,923.7	67.6	65.5	3.1
February	14,554.7	14,092.9	461.8	6,847.8	68.0	65.9	3.2
March	14,601.2	14,160.5	440.7	6,839.3	68.1	66.1	3.0
April	14,569.5	14,136.2	433.3	6,890.2	67.9	65.9	3.0
May	14,575.0	14,126.7	448.3	6,933.5	67.8	65.7	3.1
June	14,609.9	14,146.7	463.2	6,896.2	67.9	65.8	3.2
July	14,579.1	14,106.2	472.9	6,937.7	67.8	65.6	3.2
August	14,685.1	14,214.6	470.5	6,871.5	68.1	65.9	3.2
September	14,642.0	14,151.7	490.3	6,925.4	67.9	65.6	3.3
October	14,665.9	14,184.7	481.3	6,894.8	68.0	65.8	3.3
November	14,687.2	14,215.7	471.5	6,945.0	67.9	65.7	3.2
December	14,690.0	14,185.7	504.3	6,945.3	67.9	65.6	3.4
2016							
January	14,652.0	14,150.5	501.5	6,984.2	67.7	65.4	3.4
February	14,703.3	14,196.9	506.4	7,063.1	67.6	65.2	3.4
March	14,710.1	14,200.7	509.5	6,964.0	67.9	65.5	3.5
April	14,675.3	14,163.7	511.5	7,012.5	67.7	65.3	3.5
May	14,705.0	14,200.2	504.8	7,021.1	67.7	65.4	3.4
June	14,720.1	14,218.4	501.8	7,036.5	67.7	65.4	3.4
July	14,729.0	14,212.8	516.2	7,008.4	67.8	65.4	3.5
August	14,822.2	14,306.9	515.2	7,053.3	67.8	65.4	3.5
September	14,762.2	14,249.6	512.6	7,084.3	67.6	65.2	3.5
October	14,765.1	14,253.4	511.7	7,071.1	67.6	65.3	3.5
November	14,827.9	14,317.2	510.7	7,081.8	67.7	65.3	3.4
December	14,788.9	14,276.7	512.2	7,072.8	67.6	65.3	3.5
2017							
January	14,880.9	14,366.8	514.1	7,090.4	67.7	65.4	3.5
February	14,916.7	14,401.8	514.8	7,086.9	67.8	65.5	3.5
March	14,932.5	14,421.7	510.8	7,121.8	67.7	65.4	3.4
April	14,941.5	14,429.6	511.9	7,122.5	67.7	65.4	3.4
May	14,961.9	14,454.4	507.5	7,120.8	67.8	65.5	3.4
June	15,027.6	14,519.9	507.7	7,141.1	67.8	65.5	3.4
July	15,016.4	14,497.4	519.0	7,150.4	67.7	65.4	3.5
August	15,030.2	14,513.4	516.9	7,138.4	67.8	65.5	3.4
September	15,058.8	14,544.3	514.5	7,122.1	67.9	65.6	3.4
October	15,090.4	14,581.7	508.8	7,117.7	68.0	65.7	3.4
November	15,084.0	14,578.9	505.1	7,121.4	67.9	65.7	3.3
December	15,145.9	14,640.1	505.8	7,084.1	68.1	65.9	3.3

Table C: Principal statistics of labour force, Malaysia, January 2010 - April 2022

Time Series	('000)				(%)		
	Labour Force	Employed	Unemployed	Outside Labour Force	Labour Force Participation Rate	Employment to Population Ratio	Unemployment Rate
2018							
January	15,187.0	14,670.5	516.5	7,074.8	68.2	65.9	3.4
February	15,230.0	14,721.5	508.5	7,112.3	68.2	65.9	3.3
March	15,241.2	14,732.5	508.7	7,115.0	68.2	65.9	3.3
April	15,313.1	14,803.1	510.0	7,130.9	68.2	66.0	3.3
May	15,357.5	14,852.6	504.8	7,097.1	68.4	66.1	3.3
June	15,379.0	14,863.2	515.8	7,062.2	68.5	66.2	3.4
July	15,401.0	14,882.4	518.6	7,044.5	68.6	66.3	3.4
August	15,421.4	14,896.5	525.0	7,133.9	68.4	66.0	3.4
September	15,442.9	14,926.5	516.4	7,096.8	68.5	66.2	3.3
October	15,450.0	14,937.1	512.9	7,093.7	68.5	66.3	3.3
November	15,457.5	14,941.3	516.2	7,151.2	68.4	66.1	3.3
December	15,500.1	14,986.0	514.2	7,120.1	68.5	66.3	3.3
2019							
January	15,508.5	14,992.8	515.6	7,095.9	68.6	66.3	3.3
February	15,543.2	15,026.8	516.4	7,145.9	68.5	66.2	3.3
March	15,556.6	15,035.2	521.3	7,169.4	68.5	66.2	3.4
April	15,613.1	15,089.8	523.3	7,184.4	68.5	66.2	3.4
May	15,642.3	15,122.5	519.8	7,190.0	68.5	66.2	3.3
June	15,655.9	15,134.6	521.4	7,156.7	68.6	66.3	3.3
July	15,704.6	15,179.8	524.8	7,207.7	68.5	66.3	3.3
August	15,706.0	15,185.8	520.2	7,172.4	68.6	66.4	3.3
September	15,751.2	15,229.9	521.4	7,159.8	68.7	66.5	3.3
October	15,777.7	15,265.6	512.1	7,175.0	68.7	66.5	3.2
November	15,828.9	15,315.0	513.9	7,174.2	68.8	66.6	3.2
December	15,803.0	15,286.0	517.0	7,129.8	68.9	66.7	3.3
2020							
January	15,829.3	15,317.6	511.7	7,128.9	68.9	66.7	3.2
February	15,869.8	15,344.5	525.2	7,224.0	68.7	66.4	3.3
March	15,842.9	15,232.4	610.5	7,239.8	68.6	66.0	3.9
April	15,712.2	14,933.4	778.8	7,345.1	68.1	64.8	5.0
May	15,714.0	14,887.9	826.1	7,392.1	68.0	64.4	5.3
June	15,763.5	14,990.2	773.2	7,398.5	68.1	64.7	4.9
July	15,818.5	15,073.4	745.1	7,399.8	68.1	64.9	4.7
August	15,895.1	15,153.5	741.6	7,351.5	68.4	65.2	4.7
September	15,930.6	15,193.1	737.5	7,359.8	68.4	65.2	4.6
October	15,955.3	15,207.1	748.2	7,347.7	68.5	65.3	4.7
November	15,960.5	15,196.1	764.4	7,374.8	68.4	65.1	4.8
December	15,988.3	15,215.4	772.9	7,372.2	68.4	65.1	4.8
2021							
January	16,019.8	15,237.3	782.5	7,366.2	68.5	65.2	4.9
February	16,048.2	15,270.6	777.5	7,371.4	68.5	65.2	4.8
March	16,082.5	15,329.3	753.2	7,363.7	68.6	65.4	4.7
April	16,094.7	15,352.0	742.7	7,376.8	68.6	65.4	4.6
May	16,098.9	15,370.8	728.1	7,398.0	68.5	65.4	4.5
June	16,066.2	15,297.5	768.7	7,456.8	68.3	65.0	4.8
July	16,072.9	15,294.8	778.2	7,475.4	68.3	65.0	4.8
August	16,125.4	15,376.6	748.8	7,448.5	68.4	65.2	4.6
September	16,193.1	15,463.5	729.6	7,405.9	68.6	65.5	4.5
October	16,259.6	15,554.6	705.0	7,364.5	68.8	65.8	4.3
November	16,304.7	15,610.3	694.4	7,344.4	68.9	66.0	4.3
December	16,336.2	15,648.6	687.6	7,337.8	69.0	66.1	4.2

Table C: Principal statistics of labour force, Malaysia, January 2010 - April 2022

Time Series	('000)				(%)		
	Labour Force	Employed	Unemployed	Outside Labour Force	Labour Force Participation Rate	Employment to Population Ratio	Unemployment Rate
2022							
January	16,366.4	15,686.1	680.4	7,332.1	69.1	66.2	4.2
February	16,402.7	15,730.9	671.8	7,320.7	69.1	66.3	4.1
March	16,438.5	15,769.4	669.2	7,309.7	69.2	66.4	4.1
April	16,502.8	15,853.5	649.3	7,270.2	69.4	66.7	3.9

Table C1: Seasonally adjusted principal statistics of labour force, Malaysia, January 2010 - April 2022

Time Series	('000)				(%)
	Labour Force	Employed	Unemployed	Labour Force Participation Rate	Unemployment Rate
2010					
January	12,368.0	11,959.8	408.2	64.0	3.3
February	12,120.1	11,712.8	402.2	62.9	3.3
March	12,242.4	11,817.2	416.7	63.4	3.4
April	12,382.1	12,025.3	377.6	63.8	3.0
May	12,197.5	11,790.7	405.7	63.0	3.3
June	12,338.5	11,898.3	423.8	63.6	3.4
July	12,419.9	11,996.4	422.5	64.0	3.4
August	12,353.8	11,945.3	400.9	63.4	3.2
September	12,330.7	11,957.7	386.3	63.3	3.1
October	12,772.3	12,407.0	370.8	65.4	2.9
November	12,392.6	11,966.9	418.2	63.3	3.4
December	12,794.9	12,391.6	406.9	65.4	3.2
2011					
January	12,782.4	12,383.1	399.6	64.8	3.1
February	12,674.9	12,312.5	357.2	64.3	2.8
March	12,778.0	12,409.9	363.4	64.6	2.8
April	12,792.6	12,426.6	388.4	64.5	3.0
May	12,757.1	12,352.4	403.0	64.3	3.2
June	12,805.0	12,403.0	390.8	64.5	3.1
July	12,858.3	12,466.3	389.1	64.7	3.0
August	12,930.6	12,501.4	415.0	64.9	3.2
September	12,906.1	12,496.0	424.3	64.8	3.3
October	13,013.1	12,616.9	409.0	65.1	3.1
November	12,829.7	12,410.9	412.6	64.3	3.2
December	13,053.8	12,651.3	405.4	64.9	3.1
2012					
January	13,164.0	12,781.1	383.3	65.5	2.9
February	13,103.1	12,699.1	394.1	65.3	3.0
March	13,221.1	12,822.6	397.2	65.5	3.0
April	13,226.3	12,841.5	403.0	65.6	3.0
May	13,293.7	12,903.8	389.0	65.9	2.9
June	13,256.6	12,841.1	407.8	65.5	3.1
July	13,413.8	12,988.9	422.4	66.1	3.1
August	13,348.9	12,972.1	359.1	65.6	2.7
September	13,416.1	13,002.8	425.0	65.8	3.2
October	13,400.9	12,964.4	448.1	65.7	3.3
November	13,520.3	13,119.3	398.4	65.9	2.9
December	13,499.3	13,079.5	423.0	65.5	3.1
2013					
January	13,550.1	13,113.1	432.8	65.6	3.2
February	13,641.8	13,242.5	389.3	65.9	2.9
March	13,625.3	13,188.7	439.5	65.5	3.2
April	13,763.5	13,353.9	422.7	66.3	3.1
May	13,867.0	13,414.9	451.7	66.7	3.3
June	14,232.8	13,838.3	392.6	68.2	2.8
July	14,119.5	13,683.2	434.0	67.7	3.1
August	14,200.8	13,730.9	451.5	68.0	3.2
September	14,295.2	13,852.9	450.0	68.5	3.1
October	14,214.8	13,743.2	481.1	67.9	3.4
November	14,279.3	13,773.3	510.8	68.2	3.6
December	14,248.6	13,816.1	437.2	67.8	3.1

Table C1: Seasonally adjusted principal statistics of labour force, Malaysia, January 2010 - April 2022

Time Series	('000)				(%)
	Labour Force	Employed	Unemployed	Labour Force Participation Rate	Unemployment Rate
2014					
January	14,243.3	13,795.5	444.1	67.8	3.1
February	14,275.9	13,820.1	445.8	67.9	3.1
March	14,160.8	13,738.1	427.2	67.0	3.0
April	14,173.1	13,757.5	422.4	67.4	3.0
May	14,470.8	14,060.1	411.3	68.6	2.8
June	14,376.6	13,970.9	404.0	67.8	2.8
July	14,289.4	13,888.2	399.6	67.5	2.8
August	14,268.0	13,861.9	391.0	67.3	2.7
September	14,415.2	14,036.1	381.9	68.0	2.6
October	14,436.8	14,054.6	385.1	67.7	2.7
November	14,436.2	14,046.6	393.9	67.8	2.7
December	14,500.1	14,055.7	449.4	68.0	3.1
2015					
January	14,458.4	14,023.9	431.1	67.6	3.0
February	14,561.5	14,109.1	444.8	68.1	3.1
March	14,574.3	14,143.1	436.8	68.0	3.0
April	14,558.8	14,125.3	440.1	67.9	3.0
May	14,605.0	14,151.8	453.1	68.0	3.1
June	14,600.5	14,133.6	464.2	67.9	3.2
July	14,563.4	14,088.5	473.4	67.7	3.3
August	14,678.0	14,190.0	476.5	68.1	3.2
September	14,619.1	14,128.4	492.4	67.8	3.4
October	14,688.0	14,202.2	487.6	68.1	3.3
November	14,701.0	14,219.9	488.0	68.0	3.3
December	14,685.2	14,189.8	501.7	67.8	3.4
2016					
January	14,677.1	14,188.7	482.7	67.7	3.3
February	14,697.5	14,202.8	488.1	67.6	3.3
March	14,688.0	14,187.5	505.4	67.8	3.4
April	14,677.5	14,166.4	517.0	67.7	3.5
May	14,727.8	14,217.7	509.8	67.8	3.5
June	14,703.3	14,195.4	505.6	67.6	3.4
July	14,735.0	14,217.1	516.1	67.8	3.5
August	14,806.5	14,279.5	520.4	67.7	3.5
September	14,749.0	14,234.6	515.4	67.5	3.5
October	14,775.6	14,257.2	519.0	67.7	3.5
November	14,836.2	14,316.0	525.5	67.7	3.5
December	14,786.4	14,283.4	509.6	67.6	3.4
2017					
January	14,908.5	14,405.2	497.2	67.7	3.3
February	14,906.1	14,405.5	496.2	67.8	3.3
March	14,908.1	14,405.5	507.3	67.6	3.4
April	14,949.3	14,438.2	515.6	67.8	3.4
May	14,979.3	14,465.3	513.5	67.9	3.4
June	15,011.4	14,496.7	512.6	67.7	3.4
July	15,032.2	14,512.9	517.7	67.8	3.4
August	15,009.4	14,482.6	521.8	67.7	3.5
September	15,054.6	14,538.1	516.9	67.9	3.4
October	15,095.9	14,580.1	517.2	68.0	3.4
November	15,087.6	14,571.1	518.9	68.0	3.4
December	15,145.0	14,649.4	502.7	68.1	3.3

Table C1: Seasonally adjusted principal statistics of labour force, Malaysia, January 2010 - April 2022

Time Series	('000)				(%)
	Labour Force	Employed	Unemployed	Labour Force Participation Rate	Unemployment Rate
2018					
January	15,216.2	14,709.5	500.7	68.2	3.3
February	15,216.8	14,724.2	490.2	68.2	3.2
March	15,215.2	14,714.5	505.4	68.1	3.3
April	15,324.0	14,815.0	512.8	68.4	3.3
May	15,372.4	14,860.2	511.3	68.5	3.3
June	15,362.9	14,839.6	521.4	68.5	3.4
July	15,422.1	14,904.0	516.7	68.7	3.4
August	15,397.5	14,863.4	529.7	68.3	3.4
September	15,443.4	14,924.7	518.6	68.5	3.4
October	15,452.9	14,932.8	522.0	68.5	3.4
November	15,458.7	14,930.0	529.8	68.4	3.4
December	15,499.9	14,996.8	510.7	68.4	3.3
2019					
January	15,503.1	15,013.4	502.1	68.5	3.2
February	15,525.9	15,016.0	506.5	68.5	3.3
March	15,556.1	15,025.9	520.0	68.5	3.3
April	15,607.4	15,092.9	527.6	68.5	3.4
May	15,632.6	15,111.9	526.2	68.5	3.4
June	15,637.3	15,116.0	524.7	68.6	3.4
July	15,705.0	15,188.9	522.6	68.5	3.3
August	15,708.8	15,159.7	519.6	68.7	3.3
September	15,754.5	15,238.9	521.9	68.8	3.3
October	15,786.7	15,275.4	517.2	68.8	3.3
November	15,855.3	15,323.0	522.6	69.0	3.3
December	15,817.1	15,303.4	516.6	68.9	3.3
2020					
January	15,825.8	15,299.4	516.9	68.8	3.3
February	15,849.8	15,334.8	528.8	68.7	3.3
March	15,864.3	15,255.1	607.2	68.8	3.8
April	15,713.9	14,943.7	765.7	68.2	4.9
May	15,715.9	14,895.9	815.0	68.1	5.2
June	15,788.6	15,008.4	754.8	68.2	4.8
July	15,818.8	15,086.4	729.7	68.1	4.6
August	15,889.1	15,167.8	733.5	68.3	4.6
September	15,920.9	15,179.7	740.5	68.4	4.7
October	15,951.2	15,189.0	764.1	68.4	4.8
November	15,952.4	15,183.8	784.1	68.4	4.9
December	15,988.9	15,194.2	795.6	68.4	5.0
2021					
January	16,016.3	15,219.2	790.4	68.4	4.9
February	16,028.0	15,261.0	782.9	68.5	4.9
March	16,104.2	15,352.2	749.1	68.7	4.7
April	16,096.5	15,362.6	730.2	68.6	4.5
May	16,100.8	15,379.1	718.3	68.6	4.5
June	16,091.8	15,316.0	750.4	68.4	4.7
July	16,073.2	15,307.9	762.1	68.3	4.7
August	16,119.3	15,391.1	740.6	68.3	4.6
September	16,182.7	15,449.3	732.6	68.6	4.5
October	16,255.3	15,536.1	720.0	68.8	4.4
November	16,296.4	15,597.7	712.3	68.9	4.4
December	16,336.9	15,626.9	707.8	68.9	4.3

Table C1: Seasonally adjusted principal statistics of labour force, Malaysia, January 2010 - April 2022

Time Series	('000)			(%)	
	Labour Force	Employed	Unemployed	Labour Force Participation Rate	Unemployment Rate
2022					
January	16,350.3	15,651.6	688.3	68.9	4.2
February	16,392.6	15,720.2	675.4	69.1	4.1
March	16,437.2	15,768.1	667.8	69.2	4.1
April	16,507.1	15,866.5	640.6	69.5	3.9

Table C2 : Number of unemployed persons by category and duration of unemployment, January 2016- April 2022

('000)

Time Series	Unemployed	Actively Unemployed	Less than 3 month	3- Less than 6 month	6- Less than 12 month	More than year	Inactively unemployed
2016							
January	501.5	361.9	180.3	110.0	36.0	35.6	139.7
February	506.4	254.0	115.8	83.7	34.9	19.6	252.4
March	509.5	332.8	176.8	92.9	44.8	18.3	176.7
April	511.5	328.0	170.6	93.3	43.9	20.2	183.4
May	504.8	297.3	153.6	92.5	37.6	13.6	207.6
June	501.8	298.2	146.8	83.6	51.7	16.2	203.5
July	516.2	306.0	131.1	90.9	54.6	29.4	210.2
August	515.2	305.6	149.0	81.4	44.7	30.5	209.6
September	512.6	292.6	148.1	77.9	45.6	21.0	220.0
October	511.7	299.7	143.1	74.7	48.4	33.5	212.0
November	510.7	286.5	125.6	86.8	47.5	26.6	224.2
December	512.2	374.4	192.2	93.2	59.4	29.6	137.9
2017							
January	514.1	328.4	147.1	108.1	47.3	25.9	185.7
February	514.8	338.1	151.8	118.6	46.7	21.0	176.7
March	510.8	315.2	168.2	80.8	43.0	23.2	195.6
April	511.9	359.5	151.9	107.5	66.2	33.9	152.4
May	507.5	372.1	171.9	128.8	38.9	32.5	135.3
June	507.7	319.1	151.1	89.8	49.2	29.0	188.5
July	519.0	345.6	144.6	115.0	47.6	38.4	173.3
August	516.9	351.5	160.7	115.7	45.0	30.1	165.4
September	514.5	322.0	142.4	105.8	45.1	28.7	192.5
October	508.8	356.1	182.1	110.6	35.7	27.7	152.8
November	505.1	338.1	143.3	105.5	51.1	38.2	167.0
December	505.8	327.5	127.6	109.1	46.6	44.2	178.3
2018							
January	516.5	356.6	133.2	125.9	58.2	39.3	160.0
February	508.5	349.8	155.3	106.6	41.4	46.4	158.7
March	508.7	349.8	161.7	108.5	42.0	37.7	158.9
April	510.0	373.6	167.7	140.9	44.7	20.2	136.4
May	504.8	319.4	134.2	112.0	38.5	34.7	185.4
June	515.8	324.5	136.2	108.5	52.4	27.4	191.2
July	518.6	360.7	189.7	86.1	47.9	37.0	157.9
August	525.0	308.7	149.1	84.4	46.1	29.0	216.3
September	516.4	361.6	174.1	103.0	37.5	47.1	154.8
October	512.9	331.1	165.2	85.5	49.2	31.3	181.8
November	516.2	347.8	168.9	87.2	52.6	39.2	168.3
December	514.2	329.7	149.3	92.6	34.3	53.5	184.4
2019							
January	515.6	400.8	184.7	107.3	73.3	35.4	114.9
February	516.4	362.6	147.1	99.5	72.7	43.3	153.7
March	521.3	345.4	175.6	74.7	37.8	57.3	175.9
April	523.3	365.5	150.1	116.9	67.6	31.0	157.8
May	519.8	343.2	110.9	132.4	65.7	34.1	176.6
June	521.4	425.3	220.8	124.1	53.0	27.4	96.0
July	524.8	362.5	162.7	105.8	53.9	40.1	162.3
August	520.2	411.7	180.2	128.9	50.0	52.6	108.5
September	521.4	410.1	213.0	125.7	52.1	19.3	111.2
October	512.1	340.3	168.2	104.8	42.4	24.9	171.9
November	513.9	339.5	141.1	92.7	46.2	59.5	174.4
December	517.0	389.5	182.0	119.3	53.9	34.3	127.5

Table C2 : Number of unemployed persons by category and duration of unemployment, January 2016- April 2022

('000)

Time Series	Unemployed	Actively Unemployed	Less than 3 month	3- Less than 6 month	6- Less than 12 month	More than year	Inactively unemployed
2020							
January	511.7	319.8	132.4	103.2	48.7	35.6	191.9
February	525.2	343.2	148.5	96.6	52.6	45.4	182.1
March	610.5	422.9	200.0	100.2	72.7	50.1	187.6
April	778.8	459.8	235.9	156.6	38.1	29.2	319.0
May	826.1	573.7	308.1	136.1	78.6	50.8	252.4
June	773.2	594.0	298.7	159.3	85.8	50.3	179.2
July	745.1	620.2	307.4	168.5	87.2	57.1	124.9
August	741.6	615.1	302.4	164.9	89.7	58.0	126.5
September	737.5	610.4	300.5	163.6	88.2	58.0	127.1
October	748.2	623.1	304.5	167.4	89.0	62.2	125.1
November	764.4	637.7	311.2	169.8	90.4	66.3	126.7
December	772.9	644.7	313.9	172.0	92.0	66.8	128.2
2021							
January	782.5	657.2	321.5	175.9	90.4	69.3	125.3
February	777.5	647.4	327.8	155.5	91.0	73.1	130.1
March	753.2	626.9	320.1	152.5	85.6	68.6	126.3
April	742.7	618.7	322.6	151.0	80.7	64.4	124.0
May	728.1	609.9	318.2	148.3	81.2	62.2	118.2
June	768.7	642.9	335.9	157.4	86.7	62.9	125.8
July	778.2	651.3	351.4	156.7	86.1	57.1	126.9
August	748.8	627.5	337.3	153.6	80.1	56.5	121.3
September	729.6	611.0	333.3	147.3	78.9	51.4	118.7
October	705.0	589.5	327.3	142.3	74.0	45.9	115.4
November	694.4	581.8	324.3	137.6	74.8	45.1	112.6
December	687.6	576.5	322.3	136.5	74.1	43.5	111.1
2022							
January	680.4	569.5	320.8	134.2	72.0	42.5	110.9
February	671.8	562.5	318.7	131.8	71.0	41.0	109.3
March	669.2	561.0	320.4	130.1	70.4	40.1	108.1
April	649.3	542.9	315.3	124.3	64.9	38.4	106.4

Table C3 : Unemployment youth and youth unemployment rate by selected age group, January 2016 - April 2022

	('000)	(%)	('000)	(%)
Time Series	Unemployed youth (15 - 24 years)	Youth unemployment rate (15 - 24 years)	Unemployed youth (15 - 30 years)	Youth unemployment rate (15 - 30 years)
2016				
January	283.6	10.7	402.8	6.9
February	236.1	9.0	340.6	5.7
March	285.0	10.9	416.1	7.0
April	305.6	11.5	405.7	6.9
May	291.6	11.1	395.2	6.8
June	240.5	9.6	387.3	6.6
July	309.0	11.8	446.9	7.5
August	305.3	11.6	412.9	6.8
September	266.3	10.6	369.9	6.4
October	290.5	11.4	399.7	6.8
November	253.7	9.5	391.2	6.6
December	267.4	10.2	393.6	6.6
2017				
January	306.2	12.0	410.6	7.0
February	285.4	11.1	413.7	7.0
March	258.9	10.1	392.2	6.6
April	272.2	10.8	414.5	6.9
May	320.2	12.2	418.8	7.0
June	296.5	11.4	420.1	7.0
July	281.1	11.3	445.1	7.6
August	295.9	11.6	423.1	7.1
September	267.4	10.3	377.5	6.4
October	303.6	11.7	418.8	7.0
November	314.4	11.7	406.7	6.7
December	309.0	11.7	404.7	6.8
2018				
January	328.5	12.3	437.6	7.2
February	310.9	11.6	423.0	6.9
March	306.2	11.7	414.4	6.9
April	287.9	10.6	420.3	6.8
May	292.5	10.6	391.9	6.4
June	284.3	10.4	426.9	6.9
July	320.6	11.8	425.4	6.9
August	303.2	11.5	407.0	6.7
September	289.5	10.5	413.3	6.8
October	277.2	10.1	429.1	7.0
November	289.0	10.5	415.1	6.7
December	328.7	11.7	428.8	6.8
2019				
January	290.1	10.6	409.3	6.7
February	282.1	10.5	424.3	6.8
March	266.3	9.9	403.0	6.6
April	288.1	10.3	430.0	6.9
May	289.3	10.5	414.4	6.7
June	287.0	10.5	418.5	6.8
July	291.3	10.2	434.4	7.0
August	297.8	11.2	441.2	7.3
September	307.1	11.1	443.4	7.2
October	244.5	9.0	404.8	6.4
November	274.2	9.5	411.8	6.5
December	309.9	11.2	412.9	6.5

Table C3 : Unemployment youth and youth unemployment rate by selected age group, January 2016 - April 2022

	(‘000)	(%)	(‘000)	(%)
Time Series	Unemployed youth (15 - 24 years)	Youth unemployment rate (15 - 24 years)	Unemployed youth (15 - 30 years)	Youth unemployment rate (15 - 30 years)
2020				
January	268.1	10.0	396.9	6.4
February	288.0	10.8	395.0	6.4
March	291.4	11.3	470.5	7.8
April	324.2	12.9	528.0	9.0
May	362.4	14.2	573.7	10.0
June	335.8	13.1	581.7	9.7
July	313.2	13.9	544.5	9.7
August	331.0	13.7	502.3	8.9
September	325.5	13.0	502.6	8.5
October	321.6	13.4	513.2	8.9
November	344.5	13.0	528.4	8.8
December	312.2	13.2	497.2	8.7
2021				
January	295.3	13.5	509.2	9.2
February	347.6	13.9	544.3	9.2
March	321.1	13.4	537.3	9.3
April	310.7	13.7	507.3	8.7
May	328.1	13.6	545.7	9.2
June	340.9	12.7	565.1	9.4
July	344.1	13.7	520.6	8.5
August	321.1	13.9	524.1	8.8
September	335.1	13.9	507.8	8.5
October	358.8	13.9	508.4	8.1
November	350.9	13.7	517.9	8.2
December	367.7	13.7	533.8	8.5
2022				
January	364.5	13.2	521.8	8.3
February	356.9	13.0	513.7	8.1
March	361.0	13.1	502.4	8.0
April	357.2	12.8	501.2	7.7

Table C4 : Employed person by status in employment, January 2016 - April 2022

('000)

Time Series	Employer	Employee	Own account worker	Unpaid family worker
2016				
January	449.0	10,534.1	2,570.3	597.1
February	543.9	10,582.3	2,437.5	633.1
March	539.4	10,381.2	2,660.3	619.7
April	456.2	10,280.6	2,805.9	621.1
May	532.0	10,407.9	2,573.1	687.1
June	534.3	10,535.6	2,453.5	694.9
July	427.2	10,536.4	2,605.4	643.8
August	452.3	10,719.5	2,527.0	608.1
September	460.7	10,814.3	2,331.0	643.6
October	458.8	10,719.6	2,508.7	566.3
November	466.6	10,929.5	2,311.2	609.9
December	443.0	10,865.9	2,354.2	613.6
2017				
January	550.0	10,652.0	2,548.6	616.2
February	464.6	10,677.2	2,548.4	711.7
March	575.4	10,624.8	2,630.1	591.4
April	590.9	10,525.1	2,687.8	625.8
May	637.9	10,357.7	2,736.1	722.8
June	578.8	10,745.8	2,590.1	605.3
July	549.2	10,656.4	2,734.8	557.0
August	608.4	10,703.7	2,623.1	578.1
September	646.0	10,701.8	2,554.6	641.9
October	593.9	10,949.6	2,446.1	592.0
November	401.7	10,935.5	2,709.4	532.3
December	546.1	10,982.5	2,504.3	607.2
2018				
January	533.0	10,749.4	2,757.7	630.3
February	472.7	10,746.4	2,825.9	676.5
March	493.9	10,585.3	2,920.7	732.6
April	550.2	10,832.6	2,719.5	700.8
May	517.2	10,751.8	2,880.6	703.0
June	529.0	10,823.6	2,817.7	692.9
July	518.2	10,651.2	3,012.8	700.2
August	599.4	10,758.4	2,865.7	673.0
September	639.1	10,690.0	2,907.8	689.6
October	513.7	10,764.5	2,944.6	714.2
November	545.8	10,899.2	2,836.9	659.4
December	593.5	10,811.7	2,909.6	671.2
2019				
January	570.4	10,961.6	2,823.0	637.7
February	619.4	11,098.6	2,752.4	556.5
March	560.0	11,327.2	2,574.5	573.6
April	578.3	11,156.7	2,764.8	590.1
May	597.9	11,345.6	2,640.8	538.2
June	551.6	11,243.3	2,746.5	593.1
July	541.6	11,535.9	2,557.7	544.7
August	582.2	11,235.5	2,855.0	513.0
September	510.8	11,633.8	2,500.3	584.8
October	547.5	11,659.3	2,452.0	606.8
November	527.6	11,565.1	2,679.8	542.5
December	482.0	11,563.4	2,669.6	571.1

Table C4 : Employed person by status in employment, January 2016 - April 2022

('000)

Time Series	Employer	Employee	Own account worker	Unpaid family worker
2020				
January	552.3	11,375.4	2,757.1	632.8
February	513.2	11,513.8	2,691.0	626.5
March	515.7	11,280.0	2,812.2	624.5
April	563.1	11,146.3	2,585.4	638.5
May	470.3	11,399.4	2,423.9	594.1
June	497.9	11,438.2	2,417.8	636.2
July	434.8	11,647.4	2,380.9	610.4
August	434.9	11,719.9	2,416.0	582.8
September	445.1	11,734.9	2,433.7	579.5
October	450.5	11,763.0	2,425.4	568.3
November	456.8	11,782.5	2,412.0	544.7
December	462.9	11,806.1	2,399.4	547.0
2021				
January	469.7	11,846.9	2,394.6	526.1
February	481.0	11,870.8	2,429.9	488.9
March	491.8	11,898.9	2,478.2	460.4
April	493.0	11,914.8	2,490.5	453.8
May	495.7	11,930.8	2,492.9	451.4
June	486.3	11,874.1	2,497.0	440.0
July	485.1	11,869.7	2,503.8	436.2
August	491.4	11,897.6	2,537.7	449.9
September	499.7	11,925.9	2,572.6	465.4
October	506.0	11,971.2	2,607.9	469.5
November	509.8	11,998.3	2,628.0	474.2
December	512.9	12,015.9	2,640.2	479.7
2022				
January	517.2	12,028.9	2,656.2	483.8
February	521.4	12,046.2	2,674.8	488.6
March	525.7	12,060.2	2,691.7	491.8
April	536.0	12,092.5	2,723.6	501.4

Table D: Employed person by occupation, Malaysia, 1982 - 2021

('000)

Year	Total	Occupation								
		1	2	3	4	5	6	7	8	9
Dictionary of Occupational Classification, 1980 ¹										
1982	5,249.0	375.7	111.5	493.4	510.5	573.2	1,655.3	1,529.4	n.a	n.a
1983	5,457.0	381.3	132.3	520.6	522.7	593.7	1,678.5	1,628.0	n.a	n.a
1984	5,566.7	409.8	115.4	541.3	600.0	638.1	1,694.1	1,567.7	n.a	n.a
1985	5,653.4	426.6	129.2	551.5	625.9	643.0	1,720.0	1,556.9	n.a	n.a
1986	5,760.1	449.0	140.4	544.9	638.5	686.6	1,757.2	1,543.6	n.a	n.a
1987	5,983.9	452.0	117.7	566.1	711.9	704.3	1,845.8	1,586.1	n.a	n.a
1988	6,157.2	454.1	127.9	574.4	728.1	728.3	1,892.5	1,651.7	n.a	n.a
1989	6,390.9	477.0	131.3	605.5	726.0	727.0	1,848.9	1,875.0	n.a	n.a
1990	6,685.0	519.8	144.8	655.6	758.7	762.6	1,750.7	2,092.8	n.a	n.a
1992	7,047.8	586.4	187.8	732.3	763.5	790.1	1,549.7	2,437.9	n.a	n.a
1993	7,383.4	639.5	219.9	789.2	771.8	879.0	1,576.0	2,508.0	n.a	n.a
1995	7,645.0	756.6	247.7	832.0	834.9	845.8	1,539.5	2,588.4	n.a	n.a
1996	8,399.3	838.0	298.2	905.8	935.7	943.1	1,644.8	2,833.6	n.a	n.a
1997	8,569.2	896.6	329.5	963.2	918.5	985.1	1,516.4	2,960.0	n.a	n.a
1998	8,599.6	913.1	346.2	946.9	937.5	1,007.9	1,632.6	2,815.4	n.a	n.a
1999	8,837.8	937.0	348.3	985.6	991.7	1,052.8	1,633.1	2,889.2	n.a	n.a
2000	9,269.2	1,020.4	391.9	1,012.5	1,044.8	1,189.3	1,569.3	3,040.9	n.a	n.a
Malaysia Standard Classification of Occupations (MASCO) 1998 ²										
2001	9,357.0	695.0	457.2	1,126.1	890.6	1,291.1	1,265.3	1,160.2	1,476.6	994.9
2002	9,542.6	786.3	483.5	1,194.6	890.3	1,307.7	1,260.8	1,168.1	1,373.0	1,078.2
2003	9,869.7	793.5	530.3	1,219.9	937.8	1,399.4	1,249.8	1,235.6	1,420.7	1,082.6
2004	9,979.5	859.3	561.3	1,211.6	931.2	1,479.7	1,292.8	1,165.2	1,409.9	1,068.5
2005	10,045.4	777.4	555.1	1,266.8	992.3	1,483.7	1,268.6	1,145.5	1,427.5	1,128.3
2006	10,275.4	829.6	565.9	1,307.5	968.3	1,597.1	1,335.9	1,154.8	1,408.0	1,108.4
2007	10,538.1	770.4	596.8	1,400.5	1,029.5	1,705.6	1,355.3	1,133.2	1,347.4	1,199.3
2008	10,659.6	748.8	613.7	1,496.4	1,053.4	1,776.1	1,271.3	1,153.8	1,344.1	1,202.0
2009	10,897.3	822.9	684.6	1,560.0	1,086.6	1,869.1	1,255.7	1,132.9	1,242.7	1,242.8
2010	11,899.5	856.7	737.4	1,695.8	1,183.2	1,959.6	1,382.0	1,228.3	1,502.8	1,353.7
Malaysia Standard Classification of Occupations (MASCO) 2008 ³										
2011	12,351.5	692.4	1,221.0	1,306.3	1,180.3	2,503.2	1,011.8	1,345.8	1,570.2	1,520.4
2012	12,820.5	684.4	1,244.0	1,283.4	1,168.8	2,640.7	1,184.1	1,428.5	1,576.8	1,609.8
2013	13,545.4	695.5	1,284.7	1,292.6	1,190.7	2,911.0	1,180.2	1,492.1	1,694.4	1,804.0
2014	13,852.6	664.4	1,376.5	1,367.2	1,237.8	3,169.3	1,002.4	1,555.1	1,659.1	1,820.8
2015	14,067.7	718.6	1,462.0	1,406.9	1,241.1	3,188.9	940.3	1,578.8	1,585.2	1,945.9
Malaysia Standard Classification of Occupations (MASCO) 2013 ⁴										
2016	14,163.7	658.5	1,755.2	1,453.5	1,163.8	3,176.3	872.0	1,570.3	1,669.8	1,844.2
2017	14,476.8	690.3	1,771.6	1,522.9	1,236.5	3,212.6	898.9	1,517.1	1,766.5	1,860.4
2018	14,776.0	660.5	1,824.4	1,536.7	1,247.7	3,422.8	921.9	1,545.5	1,787.9	1,828.7
2019	15,073.4	694.5	1,883.5	1,573.9	1,272.1	3,411.6	932.8	1,577.1	1,865.4	1,862.5
2020	14,956.7	808.4	1,867.7	1,547.2	1,242.1	3,632.3	916.3	1,472.5	1,689.9	1,780.3
2021	15,064.2	687.0	1,961.4	1,806.7	1,507.3	3,611.5	720.3	1,301.0	1,553.7	1,915.2

Notes:

¹For 1982- 2000, category of occupation are classified according to the "Dictionary of Occupational Classification, 1980" as follows:

- 1: Professional, technical and related workers
- 2: Administrative and managerial workers
- 3: Clerical and related workers
- 4: Sales workers
- 5: Service workers
- 6: Agricultural, animal husbandry and forestry workers, fishermen and hunters
- 7: Production and related workers, transport equipment operators and labourers

²For 2001 - 2010, category of occupation are classified according to the "Malaysia Standard Classification of Occupations (MASCO) 1998" as follows:

- 1: Legislators, senior officials and managers
- 2: Professionals
- 3: Technicians and associate professionals
- 4: Clerical workers
- 5: Service workers and shop and market sales workers
- 6: Skilled agricultural and fishery workers
- 7: Craft and related trade workers
- 8: Plant and machine-operators and assemblers
- 9: Elementary occupations

³For 2011 - 2015, category of occupation are classified according to the "Malaysia Standard Classification of Occupations (MASCO) 2008" as follows:

- 1: Managers
- 2: Professionals
- 3: Technicians and associate professionals
- 4: Clerical support workers
- 5: Service workers and shop and market sales workers
- 6: Skilled agricultural, forestry and fishery workers
- 7: Craft and related trades workers
- 8: Plant and machine-operators and assemblers
- 9: Elementary occupations

⁴For 2016 - 2021, category of occupation are classified according to the "Malaysia Standard Classification of Occupations (MASCO) 2013" as follows:

- 1: Managers
- 2: Professionals
- 3: Technicians and associate professionals
- 4: Clerical workers
- 5: Service and sales workers
- 6: Skilled agricultural, forestry, livestock and fishery workers
- 7: Craft and related trades workers
- 8: Plant and machine-operators and assemblers
- 9: Elementary occupations

Table E: Employed person by industry, Malaysia, 1982 - 2021

('000)

Year	Total	Industry									
		A	B	C	D	E	F	G	H	I	J
Malaysia Industrial Classification, (Updated) 1972 ¹											
1982	5,249.0	1,635.8	51.7	816.0	34.9	377.5	860.9	223.1	202.1	1,046.9	n.a
1983	5,457.0	1,670.9	55.1	894.1	39.3	425.6	897.3	235.9	197.7	1,041.0	n.a
1984	5,566.7	1,695.0	46.5	858.4	32.9	428.0	956.6	242.8	200.5	1,106.0	n.a
1985	5,653.4	1,717.4	44.4	850.4	31.5	419.4	994.3	244.3	218.9	1,132.7	n.a
1986	5,760.1	1,764.5	40.6	874.0	32.4	369.4	1,035.1	242.0	234.6	1,167.6	n.a
1987	5,983.9	1,846.4	33.0	928.9	35.9	336.3	1,091.7	252.0	241.6	1,218.0	n.a
1988	6,157.2	1,883.8	30.7	978.1	41.3	339.9	1,112.6	265.1	229.4	1,276.1	n.a
1989	6,390.9	1,832.5	33.1	1,171.1	40.6	376.9	1,143.9	277.6	253.2	1,262.0	n.a
1990	6,685.0	1,737.6	36.8	1,332.8	46.7	423.9	1,217.8	301.9	258.4	1,329.0	n.a
1992	7,047.8	1,535.8	36.3	1,639.6	45.9	506.7	1,254.5	326.2	299.8	1,403.1	n.a
1993	7,383.4	1,558.6	37.6	1,726.9	60.3	538.8	1,266.2	344.0	330.1	1,520.9	n.a
1995	7,645.0	1,526.8	32.5	1,780.5	48.0	611.3	1,370.7	359.2	363.7	1,552.2	n.a
1996	8,399.3	1,626.2	35.0	1,912.1	44.1	716.5	1,566.7	400.7	412.0	1,686.0	n.a
1997	8,569.2	1,481.3	38.5	2,002.5	50.9	793.0	1,577.9	423.3	447.2	1,754.5	n.a
1998	8,599.6	1,616.5	28.4	1,907.8	50.0	745.9	1,616.0	421.7	425.8	1,787.5	n.a
1999	8,837.8	1,623.7	37.8	1,990.7	50.2	722.8	1,660.6	420.3	466.2	1,865.4	n.a
2000	9,269.2	1,552.4	27.7	2,174.2	49.3	759.9	1,787.2	433.9	474.3	2,010.3	n.a
Malaysia Standard Industrial Classification (MSIC) 2000 ²											
2001	9,357.0	1,288.2	127.7	26.7	2,184.1	57.3	829.8	1,458.1	585.1	468.3	225.3
2002	9,542.6	1,316.8	107.7	27.5	2,068.9	50.6	905.1	1,497.0	616.1	496.8	240.5
2003	9,869.7	1,301.2	107.0	29.5	2,131.0	57.6	942.5	1,592.2	644.2	481.6	223.4
2004	9,979.5	1,326.5	126.1	34.7	2,023.0	57.9	890.8	1,607.2	698.2	532.9	236.1
2005	10,045.4	1,355.2	115.2	36.1	1,989.3	56.6	904.4	1,620.3	671.8	544.7	247.4
2006	10,275.4	1,375.3	128.2	42.0	2,082.8	75.4	908.9	1,650.5	721.3	539.7	242.3
2007	10,538.1	1,437.3	120.9	39.4	1,977.3	60.8	922.5	1,712.1	760.7	538.2	282.2
2008	10,659.6	1,365.6	122.1	54.5	1,944.7	60.5	998.0	1,729.4	783.6	583.4	276.0
2009	10,897.3	1,349.6	121.5	62.7	1,807.1	58.1	1,015.9	1,831.8	800.5	592.0	271.5
Malaysia Standard Industrial Classification (MSIC) 2008 ³											
2010	11,899.5	1,614.9	57.2	2,108.5	55.5	66.7	1,082.7	1,887.8	554.7	856.7	178.9
2011	12,351.5	1,421.7	73.5	2,244.0	51.0	71.9	1,151.5	2,005.4	604.0	951.1	206.5
2012	12,820.5	1,628.2	80.8	2,263.7	61.9	81.0	1,174.7	2,125.6	624.3	965.1	208.8
2013	13,545.4	1,758.9	87.9	2,315.8	61.5	83.7	1,292.1	2,261.4	626.5	1,041.5	194.1
2014	13,852.6	1,694.2	84.7	2,372.5	65.6	81.2	1,277.7	2,324.4	598.2	1,149.3	213.2
2015	14,067.7	1,753.9	104.4	2,322.7	61.7	72.1	1,309.9	2,361.4	615.0	1,150.8	214.2
2016	14,163.7	1,609.9	96.3	2,390.6	77.9	76.4	1,251.7	2,428.5	630.4	1,260.7	208.7
2017	14,476.8	1,635.0	97.2	2,513.3	62.2	81.0	1,258.9	2,485.4	658.2	1,323.2	220.3
2018	14,776.0	1,570.3	90.8	2,499.9	68.8	88.6	1,257.8	2,544.6	697.9	1,473.4	216.4
2019 ^f	15,073.4	1,541.1	91.0	2,612.0	75.4	88.8	1,246.7	2,604.6	677.8	1,549.7	223.9
2020	14,956.7	1,566.0	82.2	2,498.0	76.4	83.7	1,173.4	2,765.6	689.2	1,540.0	223.4
2021	15,064.2	1,550.0	81.9	2,501.4	77.7	85.5	1,159.6	2,826.5	704.5	1,535.5	235.1

Notes:

¹For 1982 - 2000, industry was classified according to the "Malaysia Industrial Classification, (Updated) 1972" as follows:

- A: Agriculture, forestry, livestock and fishing
 B: Mining and quarrying
 C: Manufacturing
 D: Electricity, gas and water
 E: Construction
 F: Wholesale and retail trade, restaurants and hotels
 G: Transport, storage and communications
 H: Finance, insurance, real estate and business services
 I: Community, social and personal services

²For 2001 - 2009, industry was classified according to the "Malaysia Standard Industrial Classification (MSIC) 2000" as follows:

- A: Agriculture, hunting and forestry
 B: Fishing
 C: Mining and quarrying
 D: Manufacturing
 E: Electricity, gas and water supply
 F: Construction
 G: Wholesale and retail trade; repair of motor vehicles, motorcycles and personal and household goods
 H: Hotels and restaurants
 I: Transport, storage and communications
 J: Financial intermediation
 K: Real estate, renting and business activities
 L: Public administration and defence; compulsory social security
 M: Education
 N: Health and social work
 O: Other community, social and personal service activities
 P: Private households with employed persons

³For 2010 - 2021, industry was classified according to the "Malaysia Standard Industrial Classification (MSIC) 2008" as follows:

- A: Agriculture, forestry and fishing
 B: Mining and quarrying
 C: Manufacturing
 D: Electricity, gas, steam and air conditioning supply
 E: Water supply; sewerage, waste management and remediation activities
 F: Construction
 G: Wholesale and retail trade, repair of motor vehicles and motorcycles
 H: Transportation and storage
 I: Accommodation and food service activities
 J: Information and communication
 K: Financial and insurance/takaful activities
 L: Real estate activities
 M: Professional, scientific and technical activities
 N: Administrative and support service activities
 O: Public administration and defence; compulsory social security
 P: Education
 Q: Human health and social work activities
 R: Arts, entertainment and recreation
 S: Other service activities
 T: Activities of households as employers

^f Revised

Table E: Employed person by industry, Malaysia, 1982 - 2021 (cont'd)

('000)

		Industry									
Year	Total	K	L	M	N	O	P	Q	R	S	T
Malaysia Industrial Classification, (Updated) 1972 ¹											
1982	5,249.0	n.a	n.a	n.a	n.a	n.a	n.a	n.a	n.a	n.a	n.a
1983	5,457.0	n.a	n.a	n.a	n.a	n.a	n.a	n.a	n.a	n.a	n.a
1984	5,566.7	n.a	n.a	n.a	n.a	n.a	n.a	n.a	n.a	n.a	n.a
1985	5,653.4	n.a	n.a	n.a	n.a	n.a	n.a	n.a	n.a	n.a	n.a
1986	5,760.1	n.a	n.a	n.a	n.a	n.a	n.a	n.a	n.a	n.a	n.a
1987	5,983.9	n.a	n.a	n.a	n.a	n.a	n.a	n.a	n.a	n.a	n.a
1988	6,157.2	n.a	n.a	n.a	n.a	n.a	n.a	n.a	n.a	n.a	n.a
1989	6,390.9	n.a	n.a	n.a	n.a	n.a	n.a	n.a	n.a	n.a	n.a
1990	6,685.0	n.a	n.a	n.a	n.a	n.a	n.a	n.a	n.a	n.a	n.a
1992	7,047.8	n.a	n.a	n.a	n.a	n.a	n.a	n.a	n.a	n.a	n.a
1993	7,383.4	n.a	n.a	n.a	n.a	n.a	n.a	n.a	n.a	n.a	n.a
1995	7,645.0	n.a	n.a	n.a	n.a	n.a	n.a	n.a	n.a	n.a	n.a
1996	8,399.3	n.a	n.a	n.a	n.a	n.a	n.a	n.a	n.a	n.a	n.a
1997	8,569.2	n.a	n.a	n.a	n.a	n.a	n.a	n.a	n.a	n.a	n.a
1998	8,599.6	n.a	n.a	n.a	n.a	n.a	n.a	n.a	n.a	n.a	n.a
1999	8,837.8	n.a	n.a	n.a	n.a	n.a	n.a	n.a	n.a	n.a	n.a
2000	9,269.2	n.a	n.a	n.a	n.a	n.a	n.a	n.a	n.a	n.a	n.a
Malaysia Standard Industrial Classification (MSIC) 2000 ²											
2001	9,357.0	348.6	664.6	508.6	173.3	190.4	219.9	n.a	n.a	n.a	n.a
2002	9,542.6	397.1	663.6	508.6	189.3	192.5	262.7	n.a	n.a	n.a	n.a
2003	9,869.7	404.2	666.5	594.3	217.3	216.1	258.0	n.a	n.a	n.a	n.a
2004	9,979.5	458.5	684.3	610.7	198.2	231.3	260.9	n.a	n.a	n.a	n.a
2005	10,045.4	459.0	728.5	607.1	212.6	234.9	260.6	n.a	n.a	n.a	n.a
2006	10,275.4	508.4	674.1	600.1	223.2	247.1	254.7	n.a	n.a	n.a	n.a
2007	10,538.1	558.1	716.1	632.7	238.9	266.5	272.7	n.a	n.a	n.a	n.a
2008	10,659.6	553.2	751.1	656.5	252.6	274.2	253.0	n.a	n.a	n.a	n.a
2009	10,897.3	601.9	813.9	731.4	271.7	303.3	262.5	n.a	n.a	n.a	n.a
Malaysia Standard Industrial Classification (MSIC) 2008 ³											
2010	11,899.5	323.4	58.5	285.6	359.2	787.7	779.3	280.0	91.6	182.9	285.4
2011	12,351.5	319.3	61.2	328.4	448.0	750.2	782.3	384.1	87.5	181.8	225.8
2012	12,820.5	322.1	68.9	307.3	532.2	696.4	784.9	414.3	84.8	190.5	202.7
2013	13,545.4	318.9	72.7	306.8	566.9	761.4	816.6	490.0	79.4	192.4	214.8
2014	13,852.6	329.1	79.7	328.8	654.3	741.7	871.4	532.9	94.1	199.1	159.1
2015	14,067.7	354.4	71.2	359.3	634.8	751.0	899.0	573.1	81.7	233.1	142.3
2016	14,163.7	346.9	82.4	361.8	657.0	748.2	928.7	570.3	80.9	230.8	124.7
2017	14,476.8	369.0	84.5	348.1	677.2	742.2	880.3	588.0	84.3	260.1	106.9
2018	14,776.0	338.6	97.2	367.7	747.6	720.2	988.7	551.2	85.6	264.8	103.9
2019 ^f	15,073.4	355.1	90.3	394.7	809.2	737.1	992.1	527.7	84.0	266.1	104.3
2020	14,956.7	372.1	82.1	379.3	801.9	734.9	937.6	559.6	58.2	267.0	66.1
2021	15,064.2	386.5	83.4	358.9	846.0	725.1	924.3	582.2	60.5	274.7	64.6

Notes:

¹For 1982 - 2000, industry was classified according to the "Malaysia Industrial Classification, (Updated) 1972" as follows:

- A: Agriculture, forestry, livestock and fishing
 B: Mining and quarrying
 C: Manufacturing
 D: Electricity, gas and water
 E: Construction
 F: Wholesale and retail trade, restaurants and hotels
 G: Transport, storage and communications
 H: Finance, insurance, real estate and business services
 I: Community, social and personal services

²For 2001 - 2009, industry was classified according to the "Malaysia Standard Industrial Classification (MSIC) 2000" as follows:

- A: Agriculture, hunting and forestry
 B: Fishing
 C: Mining and quarrying
 D: Manufacturing
 E: Electricity, gas and water supply
 F: Construction
 G: Wholesale and retail trade; repair of motor vehicles, motorcycles and personal and household goods
 H: Hotels and restaurants
 I: Transport, storage and communications
 J: Financial intermediation
 K: Real estate, renting and business activities
 L: Public administration and defence; compulsory social security
 M: Education
 N: Health and social work
 O: Other community, social and personal service activities
 P: Private households with employed persons

³For 2010 - 2021, industry was classified according to the "Malaysia Standard Industrial Classification (MSIC) 2008" as follows:

- A: Agriculture, forestry and fishing
 B: Mining and quarrying
 C: Manufacturing
 D: Electricity, gas, steam and air conditioning supply
 E: Water supply; sewerage, waste management and remediation activities
 F: Construction
 G: Wholesale and retail trade, repair of motor vehicles and motorcycles
 H: Transportation and storage
 I: Accommodation and food service activities
 J: Information and communication
 K: Financial and insurance/takaful activities
 L: Real estate activities
 M: Professional, scientific and technical activities
 N: Administrative and support service activities
 O: Public administration and defence; compulsory social security
 P: Education
 Q: Human health and social work activities
 R: Arts, entertainment and recreation
 S: Others service activities
 T: Activities of households as employers

^f Revised

Table F: Employed person by status of employment, Malaysia, 1982 - 2021

('000)

Time Series	Total	Status of Employment			
		Employer	Employee	Own Account Worker	Unpaid Family Worker
1982	5,249.0	158.1	3,320.7	1,159.8	610.4
1983	5,457.0	175.4	3,447.2	1,242.6	591.7
1984	5,566.7	141.4	3,673.4	1,130.1	621.8
1985	5,653.4	167.8	3,636.1	1,189.8	659.5
1986	5,760.1	180.4	3,560.7	1,308.2	710.6
1987	5,983.9	167.9	3,747.9	1,280.1	788.1
1988	6,157.2	204.7	3,799.1	1,377.1	776.3
1989	6,390.9	154.2	4,164.7	1,324.3	747.4
1990	6,685.0	194.6	4,412.4	1,383.9	694.0
1992	7,047.8	158.5	5,047.7	1,277.3	564.2
1993	7,383.4	209.5	5,272.8	1,350.7	550.1
1995	7,645.0	188.1	5,553.3	1,396.4	506.9
1996	8,399.3	251.1	6,071.4	1,514.2	562.6
1997	8,569.2	222.7	6,380.7	1,449.6	516.1
1998	8,599.6	252.7	6,307.9	1,521.6	517.4
1999	8,837.8	202.2	6,602.5	1,489.1	543.9
2000	9,269.2	275.8	6,882.6	1,586.0	524.8
2001	9,357.0	306.8	7,056.2	1,514.9	478.5
2002	9,542.6	288.6	7,320.2	1,479.8	453.9
2003	9,869.7	333.0	7,523.8	1,536.3	476.3
2004	9,979.5	354.7	7,445.0	1,678.1	501.7
2005	10,045.4	337.0	7,583.4	1,671.7	453.2
2006	10,275.4	396.9	7,632.9	1,733.4	512.2
2007	10,538.1	362.5	7,824.0	1,831.5	520.1
2008	10,659.6	371.4	7,951.1	1,851.1	486.0
2009	10,897.3	399.4	8,153.6	1,862.7	481.7
2010	11,899.5	439.3	9,010.2	1,954.7	495.4
2011	12,351.5	446.1	9,483.7	1,907.4	514.3
2012	12,820.5	476.2	9,620.0	2,117.3	607.0
2013	13,545.4	523.9	10,073.5	2,316.8	631.3
2014	13,852.6	511.5	10,447.6	2,267.2	626.3
2015	14,067.7	568.6	10,395.5	2,476.2	627.4
2016	14,163.7	486.4	10,534.2	2,522.3	620.9
2017	14,476.8	553.5	10,710.1	2,606.7	606.4
2018	14,776.0	547.2	10,700.4	2,859.2	669.1
2019	15,073.4	552.9	11,218.3	2,724.2	578.1
2020	14,956.7	512.2	11,554.2	2,383.0	507.4
2021	15,064.2	508.4	11,821.4	2,231.0	503.3

Table G: Labour force indicators for selected countries, April 2021 - April 2022

Indicators										2022				Data Source
	Apr	May	June	July	Aug	Sep	Oct	Nov	Dec	Jan	Feb	Mar	Apr	
Labour Force Participation Rate (LFPR) (%)														
South East Asia														DOSM Philippine Statistics Authority
Malaysia	68.6	68.5	68.3	68.3	68.4	68.6	68.8	68.9	69.0	69.1	69.1	69.2	69.4	
Philippine	63.2	64.6	65.0	59.8	63.6	63.3	62.6	64.2	65.1	60.5	63.8	65.4	n.a.	
East Asia														Census and Statistics Department National Statistics Republic of China Statistics Korea Statistics Bureau of Japan
Hong Kong	59.6	59.6	59.5	59.5	59.5	59.3	59.1	58.9	58.8	58.7	58.7	58.5	58.2	
Taiwan	59.2	58.8	58.8	59.0	59.0	58.9	59.0	59.1	59.2	59.2	59.2	59.2	59.2	
South Korea	63.0	63.7	63.7	63.4	62.8	63.0	63.2	63.1	62.6	62.2	62.7	63.3	64.0	
Japan	62.2	62.2	62.4	62.5	62.4	62.3	62.0	62.0	61.9	61.7	61.8	62.1	62.6	
Oceania														ABS
Australia	66.0	66.2	66.2	66.0	65.2	64.5	64.6	66.1	66.1	66.2	66.4	66.4	66.3	
North America														BLS Statistics Canada
USA	61.7	61.6	61.6	61.7	61.7	61.7	61.7	61.9	61.9	62.2	62.3	62.4	62.2	
Canada	64.8	64.6	65.0	65.1	65.1	65.5	65.3	65.3	65.4	65.0	65.4	65.4	65.3	
Europe														ONS Statistics Sweden Statistics Finland Trading economics National Institute of Statistics Statistics Netherlands
United Kingdom	78.6	78.7	78.9	78.9	78.9	78.9	78.8	78.7	78.8	78.7	78.6	78.6	n.a.	
Sweden	73.7	74.5	76.4	76.2	74.5	73.8	73.1	73.5	72.9	73.1	73.7	73.7	74.6	
Finland	66.4	69.7	70.3	68.9	67.1	65.9	66.3	66.1	67.5	66.4	66.8	67.1	67.5	
Russia	62.2	n.a.	n.a.	n.a.	n.a.	n.a.	n.a.	n.a.	n.a.	n.a.	n.a.	n.a.	n.a.	
Italy	63.8	64.0	64.2	64.5	64.2	64.3	64.8	65.0	64.9	65.0	65.2	65.5	65.4	
Netherland	73.0	73.0	73.5	73.5	73.8	73.8	74.0	73.9	74.0	74.1	74.1	74.5	74.6	
Unemployment rate (%)														
South East Asia														DOSM Philippine Statistics Authority
Malaysia	4.6	4.5	4.8	4.8	4.6	4.5	4.3	4.3	4.2	4.2	4.1	4.1	3.9	
Philippine	8.7	7.7	7.7	6.9	8.1	8.9	7.4	6.5	6.6	6.4	6.4	5.8	n.a.	
East Asia														Census and Statistics Department National Statistics Republic of China Statistics Korea Statistics Bureau of Japan
Hong Kong	6.4	6.0	5.5	5.0	4.7	4.5	4.3	4.1	3.9	3.9	4.5	5.0	5.4	
Taiwan	3.6	4.1	4.8	4.5	4.2	4.0	3.8	3.7	3.6	3.6	3.7	3.7	3.6	
South Korea	4.0	4.0	3.8	3.2	2.6	2.7	2.8	2.6	3.5	4.1	3.4	3.0	3.0	
Japan	2.8	3.0	2.9	2.8	2.8	2.8	2.7	2.8	2.7	2.8	2.7	2.6	2.5	
Oceania														ABS
Australia	5.5	5.1	4.9	4.6	4.5	4.6	5.2	4.6	4.2	4.2	4.0	3.9	3.9	
North America														BLS Statistics Canada
USA	6.0	5.8	5.9	5.4	5.2	4.7	4.6	4.2	3.9	4.0	3.8	3.6	3.6	
Canada	8.0	8.0	7.6	7.4	7.1	7.0	6.8	6.1	6.0	6.5	5.5	5.3	5.2	
Europe														ONS Statistics Sweden Statistics Finland Trading economics National Institute of Statistics Statistics Netherlands
United Kingdom	4.9	4.9	4.8	4.7	4.5	4.3	4.3	4.2	4.1	4.0	3.9	3.8	n.a.	
Sweden	9.4	9.8	10.3	8.0	8.5	8.2	7.6	7.5	7.3	8.3	7.9	8.2	8.2	
Finland	9.6	10.3	7.6	7.1	6.5	7.0	6.0	6.0	6.7	7.5	6.7	7.0	6.9	
Russia	5.2	4.9	4.8	4.5	4.4	4.3	4.3	4.3	4.3	4.4	4.1	n.a.	n.a.	
Italy	10.7	10.5	9.7	9.3	9.3	9.2	9.4	9.2	9.0	8.8	8.5	8.3	8.4	
Netherland	4.5	4.4	4.2	4.1	4.2	4.1	3.9	3.7	3.8	3.6	3.4	3.3	3.2	

Note

n.a. not available

LABOUR FORCE REPORT, MALAYSIA APRIL 2022

Malaysian Bureau of Labour Statistics,
Department of Statistics, Malaysia.

For further information:

Malaysian Bureau of Labour Statistics,
Department of Statistics, Malaysia,
Level 2, Block D5, Complex D,
Federal Government Administrative Centre,
62514 Putrajaya, MALAYSIA.

E-mail: mbls@dosm.gov.my
Telephone: 03-88710201

www.dosm.gov.my

